

**DAONÁIREAMH  
NA hÉIREANN  
1961.**

**IMLEABHAR IX.**

**AN GHAeilGE**  
Máille le Táiblí Speisialta i Leith na Gaeltachta

AN PHríomh-Oifig Staidrimh a Thiomsaigh  
*Na figiúirí atá sa bhfoilsachán seo bainid le daonra na hÉireann  
gan na Sé Contae d'áireamh.*

**CENSUS OF POPULATION  
OF IRELAND  
1961.**

**VOLUME IX.**

**IRISH LANGUAGE**  
WITH SPECIAL TABLES FOR THE GAELTACHT AREAS

COMPILED BY  
CENTRAL STATISTICS OFFICE

*The statistics herein relate to the population of Ireland exclusive of the Six Counties.*

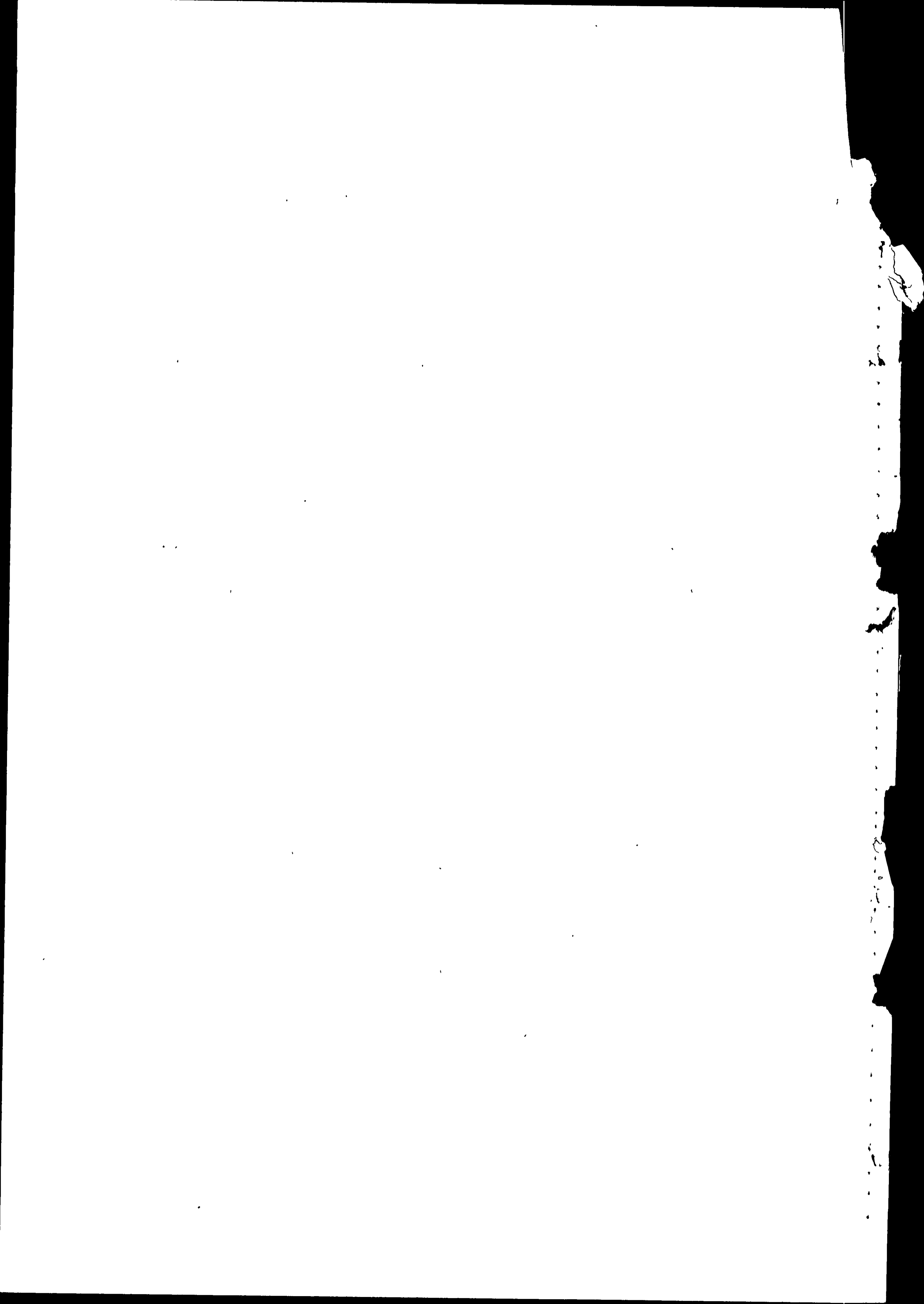
BAILE ÁTHA CLIATH:  
DUBLIN:  
ARNA FHOILSIÚ AG OIFIG AN tSOLÁTHAIR.  
PUBLISHED BY THE STATIONERY OFFICE.

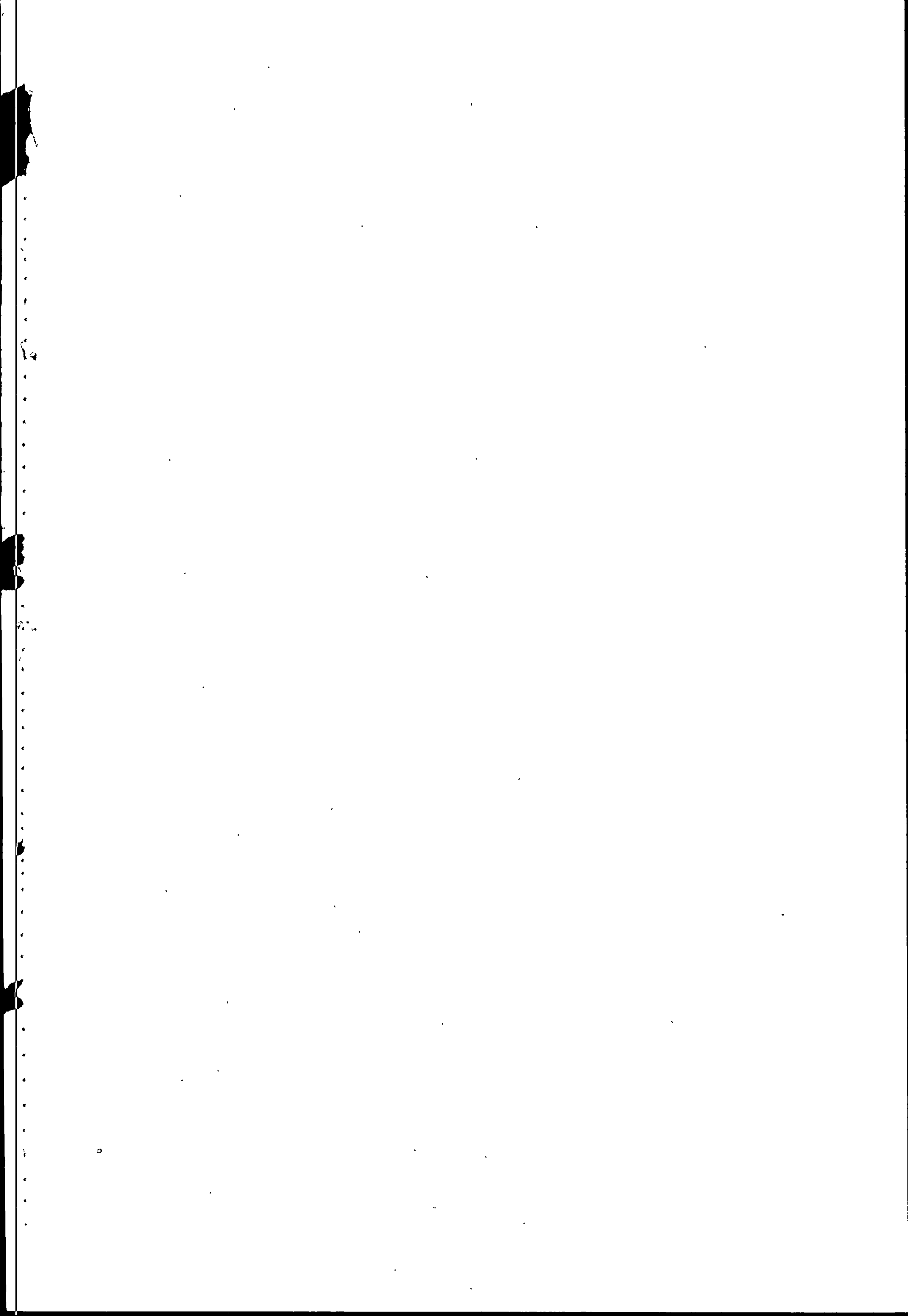
Le ceannach ón  
OIFIG DÍOLTA FOILSEACHÁN RIALTAIS, AN STUARA, ARD-OIFIG AN PHOIST,  
BAILE ÁTHA CLIATH, 1,  
nó trí aon díoltóir leabhar.

To be purchased from the  
GOVERNMENT PUBLICATIONS SALE OFFICE, G.P.O. ARCADE, DUBLIN, 1,  
or through any Bookseller.

1966.

Luach: Dhá Scilling agus Sé Phingin.  
Price: Two Shillings and Sixpence.





# AN DAONÁIREAMH, 1961.

## IMLEABHAR IX

### CLÁR

#### NÓTAÍ MÍNITHE

Leath.

vi

#### TÁIBLÍ

1.	Gaeilgeoirí agus Neamh-Ghaeilgeoirí i ngach Cúige i ngach Daonáireamh ó 1861 go 1946 agus 1961.	2
2.	Gaeilgeoirí mar chéatadán den líon iomlán daoine i ngach Cúige i ngach Daonáireamh ó 1861 go 1946 agus 1961.	2
3.	An líon agus an céatadán Gaeilgeoirí, 3 bliana d'aois agus os a chionn, i ngach Cúige agus Contae – 1936, 1946 agus 1961.	3
4.	An líon agus an céatadán Gaeilgeoirí i ngach Ceantar Uirbeach agus Tuathcheantar i 1961, agus an céatadán comparáideach i 1946 – Daoine 3 bliana d'aois agus os a chionn.	4
5.	An líon agus an céatadán Gaeilgeoirí agus Neamh-Ghaeilgeoirí, 3 bliana d'aois agus os a chionn, i ngach Cúige arna n-aicmiú de réir aoisghrúpaí – 1936, 1946 agus 1961.	13
6.	Gaeilgeoirí agus Neamh-Ghaeilgeoirí, 3 bliana d'aois agus os a chionn, i ngach Cúige, Contae agus Contae-bhuirg arna n-aicmiú de réir aoisghrúpa.	14
6A.	Gaeilgeoirí mar chéatadán den líon iomlán i ngach aoisghrúpa.	18
7.	Gaeilgeoirí arna n-aicmiú de réir slí bheatha.	20
8.	Daonra iomlán (gach aois) 'sna limistéir Fhíor-Ghaeltachta agus Bhreac-Ghaeltachta, mar a mhínítear iad sin i dTuarascáil Choimisiún na Gaeltachta, 1925, i ngach Daonáireamh – 1926 go 1961.	24
9.	Gaeilgeoirí agus Neamh-Ghaeilgeoirí, 3 bliana d'aois agus os a chionn, 'sna limistéir Fhíor-Ghaeltachta agus Bhreac-Ghaeltachta, mar a mhínítear iad sin i dTuarascáil Choimisiún na Gaeltachta, 1925, i ngach Contae – 1936, 1946 agus 1961.	25
10.	Daonra iomlán (gach aois) i 1956 agus i 1961, na coda de gach Contae a áirítear mar limistéar Gaeltachta in Ordú na Limistéirí Gaeltachta, 1956.	26
11.	Gaeilgeoirí agus Neamh-Ghaeilgeoirí, 3 bliana d'aois agus os a chionn, i 1961, sa chuid de gach Contae a áirítear ina limistéar Gaeltachta in Ordú na Limistéirí Gaeltachta, 1956.	26
12A.	Gaeilgeoirí agus Neamh-Ghaeilgeoirí, 3 bliana d'aois agus os a chionn, arna n-aicmiú de réir aoisghrúpaí, sa chuid de gach Contae a áirítear ina limistéar Gaeltachta in Ordú na Limistéirí Gaeltachta, 1956.	27
12B.	Fireannaigh, Gaeilgeoirí agus Neamh-Ghaeilgeoirí, 3 bliana d'aois agus os a chionn, arna n-aicmiú de réir aoisghrúpaí, sa chuid de gach Contae a áirítear ina limistéar Gaeltachta in Ordú na Limistéirí Gaeltachta, 1956.	28 <sup>o</sup>
12C.	Baineannaigh, Gaeilgeoirí agus Neamh-Ghaeilgeoirí, 3 bliana d'aois agus os a chionn, arna n-aicmiú de réir aoisghrúpaí, sa chuid de gach Contae a áirítear ina limistéar Gaeltachta in Ordú na Limistéirí Gaeltachta, 1956.	29
13.	An daonra iomlán i 1956 agus i 1961 agus an líon iomlán daoine 3 bliana d'aois agus os a chionn i 1961, ag idirdhealú Ghaeilgeoirí agus Neamh-Ghaeilgeoirí, i dToghanna Ceantair nó coda de Toghanna Ceantair sa Ghaeltacht mar a mhínítear sin le hOrdú na Limistéirí Gaeltachta, 1956.	30

# CENSUS OF POPULATION, 1961.

## VOLUME IX

### CONTENTS

	Page
EXPLANATORY NOTES	vii
TABLES	
1. Irish speakers and non-Irish speakers in each Province at each Census from 1861 to 1946 and 1961.	2
2. Irish speakers as percentage of total persons in each Province at each Census from 1861 to 1946 and 1961.	2
3. Number and percentage of Irish speakers, 3 years of age and over, in each Province and County - 1936, 1946 and 1961.	3
4. Number and percentage of Irish speakers in each Urban and Rural District in 1961, with comparative percentage figures for 1946 - Persons 3 years of age and over.	4
5. Number and percentage of Irish speakers and non-Irish speakers, 3 years of age and over, in each Province classified by age group - 1936, 1946 and 1961.	13
6. Irish speakers and non-Irish speakers, 3 years of age and over, in each Province, County and County Borough classified by age group.	14
6A. Irish speakers as a percentage of the total in each age group.	18
7. Irish speakers classified by occupational group.	20
8. Total population (all ages) in Fíor-Ghaeltacht and Breac-Ghaeltacht areas, as defined in the Gaeltacht Commission Report, 1925, at each Census - 1926 to 1961.	24
9. Irish speakers and non-Irish speakers, 3 years of age and over, in the Fíor-Ghaeltacht and Breac-Ghaeltacht areas, as defined in the Gaeltacht Commission Report, 1925, in each County - 1936, 1946 and 1961.	25
10. Total population (all ages) in 1956 and 1961 of the portion of each County designated as a Gaeltacht area in the Gaeltacht Areas Order, 1956.	26
11. Irish speakers and non-Irish speakers, 3 years of age and over, in 1961, in the portion of each County designated as a Gaeltacht area in the Gaeltacht Areas Order, 1956.	26
12A. Irish speakers and non-Irish speakers, 3 years of age and over, classified by age group, in the portion of each County designated as a Gaeltacht area in the Gaeltacht Areas Order, 1956.	27
12B. Males, Irish speakers and non-Irish speakers, 3 years of age and over, classified by age group, in the portion of each County designated as a Gaeltacht area in the Gaeltacht Areas Order, 1956.	28
12C. Females, Irish speakers and non-Irish speakers, 3 years of age and over, classified by age group, in the portion of each County designated as a Gaeltacht area in the Gaeltacht Areas Order, 1956.	29
13. Total population in 1956 and 1961 and total persons 3 years of age and over in 1961, distinguishing Irish speakers and non-Irish speakers, in District Electoral Divisions or parts of District Electoral Divisions within the Gaeltacht as defined by the Gaeltacht Areas Order, 1956.	30

# AN DAONÁIREAMH, 1961.

## IMLEABHAR IX - AN GHAELIGE

### NÓTAÍ MÍNIÚCHÁIN

San imleabhar seo déantar líon na ndaoine trí bliana d'aois nó os a chionn a aicmiú de réir a n-eolais ar an nGaeilge, de thoradh an Daonáirimh a rinneadh oíche an 9 Aibreán, 1961. Tom-saíodh an t-eolas as na freagraí a tugadh ar an treoir seo a leanas ar sceideal an Daonáirimh:-

#### Labhairt na Gaeilge.

Is ceart an cheist seo a fhreagairt i dtaobh gach duine atá trí bliana d'aois nó os a chionn. Fág bán i gcás leanaí faoi bhun trí bliana. Scríobh "Gaeilge amháin" do dhaoine nach bhfuil acu ach Gaeilge. Scríobh "Gaeilge agus Béarla" do dhaoine a bhfuil labhairt na Gaeilge agus an Bhéarla acu. Do dhaoine ar féidir leo Gaeilge a léamh ach gan bheith in ann í a labhairt, scríobh "Léamh na Gaeilge gan bheith in ann í a labhairt".

Ná scríobh dada os coinne ainmneacha daoine nach bhfuil léamh ná labhairt na Gaeilge acu.

B'ionann an treoir sin agus an ceann a tugadh i nDaonáireamh, 1946, is é sin an Daonáireamh ba dhéanaí roimhe sin ina raibh ceist faoin nGaeilge sa sceideal. Sa rangú a dhéantar san imleabhar seo, taispeántar mar Ghaeilgeoirí daoine sa dá aicme thosaigh i dteannta a chéile, agus taispeántar mar neamh-Ghaeilgeoirí na daoine sa dá aicme eile. Sin mar a rinneadh sa Tuarascáil ar an Daonáireamh, 1946.

Is féidir freagra cruinn a thabhairt ar na ceisteanna i sceideal an Daonáirimh a bhaineann le Gnéas, leis an Dáta a rugadh, le Pósadh, le Slí Bheatha, etc., ach na freagraí a thugtar ar an gceist faoi "Labhairt na Gaeilge" braitheann siad cuid mhaith ar bhreithiúnas an duine a bheadh ag líonadh na foirme. Níorbh fhéidir modh a aimsiú, a bheadh simplí go leor le haghaidh Daonáirimh, chun caighdeán seasmhach a thabhairt le daoine a rangú ina ndaoine "a bhfuil labhairt na Gaeilge" acu agus ina ndaoine nach bhfuil. Dá bhrí sin ní féidir an staidreamh atá san imleabhar seo a ghlacadh mar staidreamh atá chomh cruinn céanna leis an staidreamh in imleabhair eile an Daonáirimh. Mar sin féin, d'fhéadfadh an staidreamh don Ghaeilge a bheith suimiúil chun comparáid a dhéanamh idir limistéir éagsúla sa tír agus idir an Daonáireamh seo agus Daonáirimh roimhe ach i gcás aon fheidhm a bhaint as na sonraí seo ní foláir cuimhneamh ar an easpa cruinnis oibiachtúil dá dtagraítear thuas.

Tá an t-imleabhar seo leagtha amach ar an dóigh chéanna leis na h-imleabhair chomhréire a bhain le Daonáirimh 1936 agus 1946, inar foilsíodh sonraí faoi eolas ar an nGaeilge i gcás an líon daoine a bhí trí bliana d'aois nó os a chionn. Taispeántar figiúirí comparáideacha do 1926, 1936 agus 1946 i dtaobh an líon daoine a bhí trí bliana d'aois nó os a chionn agus figiúirí do gach Daonáireamh anuas go dtí 1926 i dtaobh an daonra iomláin i ngach aois. Tabharfar faoi deara ó fhiúirí 1926 i dTábla I go dtugann eisiámh na ndaoine faoi bhun trí bliana d'aois claonadh i leith ardú beag ar an bhfigiúr do Ghaeilgeoirí mar chéatadán den iomlán.

Tá na táblaí staidrimh san imleabhar seo inchurtha i dt trí roinn. Baineann Táblaí 1 go 7, go huile, leis an Stát ar fad. Baineann Táblaí 8 agus 9 le limistéir na Fíor-Ghaeltachta agus na Breac-Ghaeltachta de réir mar atá siad mínithe i dTuarascáil Choimisiúin na Gaeltachta, 1925. Baineann Táblaí 10 go 13 leis an nGaeltacht mar a mhínítear sin le hOrdú na Limistéirí Gaeltachta, 1956. I gcás na dTáblaí don Stát agus don Fhíor-Ghaeltacht agus don Bhreac-Ghaeltacht tugtar figiúirí comparáideacha ó Dhaonáirimh roimhe seo aon uair is féidir sin. I gcás na Gaeltachta mar a mhínítear sin le hOrdú na Limistéirí Gaeltachta, 1956, áfach, ní féidir figiúirí comparáideacha a thabhairt i dtaobh Gaeilgeoirí agus neamh-Ghaeilgeoirí i nDaonáirimh roimhe seo ach i dTáblaí 10 agus 13 tugtar an daonra iomlán do gach aois i réigiúin laistigh den nua-Ghaeltacht le haghaidh comparáide le figiúirí comhréire 1961.

San Fhíor-Ghaeltacht, mar a mhínítear í i dTuarascáil Choimisiúin na Gaeltachta, 1925, bhí codanna de na contaethe seo - An Clár, Corcaigh, Dún na nGall, Gaillimh, Ciarraí, Maigh Eo agus Port Láirge. Sa Bhreac-Ghaeltacht, i dteannta codanna de na contaethe sin, bhí limistéir bheaga i gContae Shligigh agus i gContae Thiobraid Árann. Nuair a bhí an Tuarascáil i dtaobh na Gaeilge á hullmhú i nDaonáirimh 1926, 1936 agus 1946, tharla, de dhearmad is cosúil, nár áiríodh na limistéir sin i gContae Shligigh agus i gContae Thiobraid Árann sa Bhreac-Ghaeltacht. Tá coigeartú air sin san Imleabhar seo. Ceartaíodh san imleabhar seo earráid a bhí i dTuarascáil 1946 i dtaobh na bhfigiúirí don Fhíor-Ghaeltacht agus don Bhreac-Ghaeltacht i gContae Chiarraí.

# CENSUS OF POPULATION, 1961.

## VOLUME IX - IRISH LANGUAGE

### EXPLANATORY NOTES.

This volume contains classifications of the population aged three years of age and over by knowledge of the Irish language, derived from the Census of Population taken on the night of 9 April, 1961. The information was compiled from replies given to the following instruction on the Census schedule:-

#### Ability to speak the Irish language.

This question should be answered for persons aged three years and over. Leave blank for children under three years of age. Write "Irish only" for those persons who can speak only Irish. Write "Irish and English" for those who can speak Irish and English. For persons who can read but cannot speak Irish write "Read but cannot speak Irish".

Do not write anything opposite names of persons who can neither read nor speak Irish.

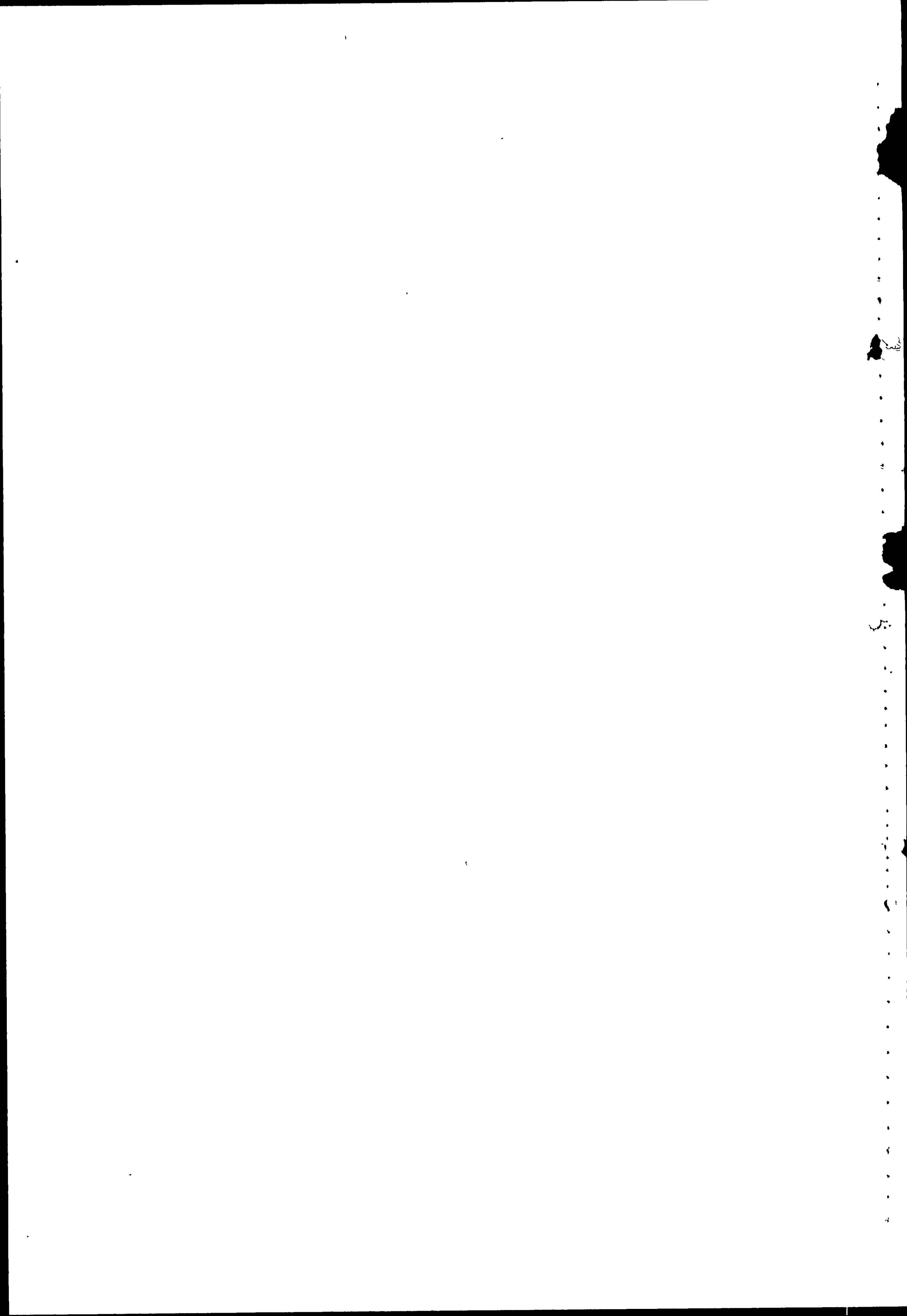
This instruction was similar to that used at the 1946 Census of Population, this being the most recent previous Census at which the schedule contained a question on the Irish language. In the classifications in the present volume, persons in the first two of the above categories combined are shown as Irish speakers, while those in the two remaining categories are shown as non-Irish speakers. This procedure is the same as that adopted in preparing the Report of the 1946 Census.

Whereas the questions on the Census schedule relating to Sex, Date of birth, Marital condition, Occupation, etc. can be answered precisely, the replies given to the question on "Ability to speak the Irish language" depend to a large extent on the judgment of the person completing the form. It has not been found possible to devise a method, simple enough for Census purposes, to provide an invariable standard for classifying persons into those who "can speak Irish" and those who cannot. Consequently the statistics contained in the present volume cannot be regarded as being precise in the same degree as those in the other volumes of the Census. The statistics of Irish language may, nevertheless, be of interest for purposes of comparison between different areas of the country and between this and previous Censuses but in any use of these data the lack of objective precision referred to above must be borne in mind.

The present volume follows the pattern adopted in the corresponding volumes of the 1936 and 1946 Censuses, in which particulars of knowledge of the Irish language were published in respect of the population aged three years and over. Comparative figures for 1926, 1936 and 1946 in respect of the population aged three years and over and figures for each Census up to 1926 for the total population at all ages are shown. It will be observed from the 1926 figures in Table 1 that the exclusion of persons under three years of age tends to raise slightly the figure representing Irish speakers as a percentage of the total.

The statistical tables contained in this volume fall into three sections. Tables 1 to 7 relate to the whole State. Tables 8 and 9 relate to the Fíor-Ghaeltacht and Breac-Ghaeltacht areas as defined in the Gaeltacht Commission Report, 1925. Tables 10 to 13 relate to the Gaeltacht as defined by the Gaeltacht Areas Order, 1956. In the case of the tables for the State and for the Fíor-Ghaeltacht and Breac-Ghaeltacht comparable figures derived from earlier Censuses of Population are given wherever possible. In the case of the Gaeltacht as defined by the Gaeltacht Areas Order, 1956, however, it is not possible to give comparable figures in respect of Irish speakers and non-Irish speakers at earlier Censuses but in Tables 10 and 13 the total populations of all ages in regions within the new Gaeltacht are shown for comparison with the corresponding 1961 figures.

The Fíor-Ghaeltacht, as defined in the Gaeltacht Commission Report, 1925, contained portions of the Counties of Clare, Cork, Donegal, Galway, Kerry, Mayo and Waterford. The Breac-Ghaeltacht, in addition to including portions of the foregoing counties, contained small areas in the Counties of Sligo and Tipperary. Due, apparently to an oversight in the preparation of the Irish language Reports of the 1926, 1936 and 1946 Censuses, these areas in County Sligo and County Tipperary were not included in the Breac-Ghaeltacht. The position has been rectified in the present volume. An error in the figures for the Fíor and Breac-Ghaeltacht in County Kerry in the 1946 Report has been corrected in the present volume.



TÁIBLÍ  
TABLES

TÁBLA 1:- GAEILGEOIRÍ AGUS NEAMH-GHAEILGEOIRÍ I NGACH CÚIGE I NGACH DAONÁIREAMH Ó 1861 GO 1946 AGUS 1961.

TABLE 1:- IRISH SPEAKERS AND NON-IRISH SPEAKERS IN EACH PROVINCE AT EACH CENSUS FROM 1861 TO 1946 AND 1961.

Bliain Year	An tIomlán Total		Laighin Leinster		Mumhain Munster		Connachta Connacht		Ulaidh (cuid de) Ulster (part of)	
	Gaeil- geoirí Irish speakers	Neamh- Ghaeil- geoirí Non-Irish speakers	Gaeil- geoirí Irish speakers	Neamh- Ghaeil- geoirí Non-Irish speakers	Gaeil- geoirí Irish speakers	Neamh- Ghaeil- geoirí Non-Irish speakers	Gaeil- geoirí Irish speakers	Neamh- Ghaeil- geoirí Non-Irish speakers	Gaeil- geoirí Irish speakers	Neamh- Ghaeil- geoirí Non-Irish speakers
Daonra de gach aois. Population of all ages.										
1861	1,077,087	3,325,024	35,704	1,421,931	545,531	968,027	409,482	503,653	86,370	431,413
1871	804,547	3,248,640	16,247	1,323,204	386,494	1,006,991	330,211	516,002	71,595	402,443
1881	924,781	2,945,239	27,452	1,251,537	445,766	885,349	366,191	455,466	85,372	352,887
1891	664,387	2,804,307	13,677	1,174,083	307,633	864,769	274,783	449,991	68,294	315,464
1901	619,710	2,602,113	26,436	1,126,393	276,268	799,920	245,580	401,352	71,426	274,448
1911	553,717	2,585,971	40,225	1,121,819	228,694	806,801	217,087	393,897	67,711	263,454
1926	543,511	2,428,481	101,474	1,047,618	198,221	771,681	175,209	377,698	68,607	231,484
Daonra 3 bliana d'aois agus os a chionn. Population 3 years of age and over.										
1926	540,802	2,261,650	101,102	978,536	197,625	718,068	174,234	348,964	67,841	216,082
1936	666,601	2,140,324	183,378	966,434	224,805	668,030	183,082	315,322	75,336	190,538
1946	588,725	2,182,932	180,755	1,017,491	189,395	672,660	154,187	309,638	64,388	183,143
1961	716,420	1,919,398	274,644	964,383	228,726	567,613	148,708	246,592	64,342	140,810

TÁBLA 2:- GAEILGEOIRÍ MAR CHEÁTADÁN DEN LÍON IOMLÁN DAOINE I NGACH CÚIGE I NGACH DAONÁIREAMH Ó 1861 GO 1946 AGUS 1961.

TABLE 2:- IRISH SPEAKERS AS PERCENTAGE OF TOTAL PERSONS IN EACH PROVINCE AT EACH CENSUS FROM 1861 TO 1946 AND 1961.

Bliain Year	An tIomlán Total	Laighin Leinster	Mumhain Munster	Connachta Connacht	Ulaidh (cuid de) Ulster (part of)
	%	%	%	%	%
Daonra de gach aois. Population of all ages.					
1861	24.5	2.4	36.0	44.8	16.7
1871	19.8	1.2	27.7	39.0	15.1
1881	23.9	2.1	33.5	44.6	19.5
1891	19.2	1.2	26.2	37.9	17.8
1901	19.2	2.3	25.7	38.0	20.7
1911	17.6	3.5	22.1	35.5	20.4
1926	18.3	8.8	20.4	31.7	22.9
Daonra 3 bliana d'aois agus os a chionn. Population 3 years of age and over.					
1926	19.3	9.4	21.6	33.3	23.9
1936	23.7	15.9	25.2	36.7	28.3
1946	21.2	15.1	22.0	33.2	26.0
1961	27.2	22.2	28.7	37.6	31.4

TÁBLA 3:- AN LÍON AGUS AN CÉATADÁN GAEILGEOIRÍ, 3 BLIANA D'AOIS AGUS OS A CHIONN, I NGACH CUÍGE AGUS CONTAE - 1936, 1946 AGUS 1961.

TABLE 3:- NUMBER AND PERCENTAGE OF IRISH SPEAKERS, 3 YEARS OF AGE AND OVER, IN EACH PROVINCE AND COUNTY - 1936, 1946 AND 1961.

Cuíge nó Contae	Gaeilgeoirí Irish speakers			Neamh-Ghaeilgeoirí Non-Irish speakers			Gaeilgeoirí mar chéatadán den iomlán Irish speakers as percentage of total			Province or County
	1936	1946	1961	1936	1946	1961	1936	1946	1961	
AN tIOMLÁN	666,601	888,725	716,420	2,140,924	2,182,932	1,919,998	23.7	21.2	27.2	TOTAL
LAIGHIN	183,378	180,755	274,644	966,434	1,017,491	964,389	15.9	15.1	22.2	LEINSTER
Ceatharlach	5,215	4,563	7,147	27,330	27,227	23,824	16.0	14.4	23.1	Carlow
Baile Átha Cliath*	86,585	92,381	140,876	464,147	503,809	525,447	15.7	15.5	21.1	Dublin*
Cill Dara	9,297	9,380	15,293	45,068	50,679	44,500	17.1	15.6	25.6	Kildare
Cill Chainnigh	11,423	9,934	14,675	53,655	52,492	42,994	17.6	15.9	25.4	Kilkenny
Laois	8,528	7,278	10,731	39,014	39,357	31,466	17.9	15.6	25.4	Laoighis
An Longphort	5,611	5,684	7,319	30,328	28,333	21,499	15.6	16.7	25.4	Longford
Lú	9,858	8,692	13,906	50,928	53,084	48,963	16.2	14.1	22.1	Louth
An Mhí	9,485	10,195	14,648	48,618	51,467	46,004	16.3	16.5	24.2	Meath
Díbh Fhailí	7,755	6,925	10,759	40,824	43,340	37,171	16.0	13.8	22.4	Offaly
An Iarmhí	9,133	7,769	12,175	42,646	43,529	37,112	17.6	15.1	24.7	Westmeath
Loch Garman	12,639	11,342	16,425	76,394	74,348	61,449	14.2	13.2	21.1	Wexford
Cill Mhantáin	7,849	6,612	10,690	47,482	49,826	43,954	14.2	11.7	19.6	Wicklow
MUMHAIN	224,805	189,395	228,726	668,030	672,660	567,613	25.2	22.0	28.7	MUNSTER
An Clár	27,078	21,186	21,678	58,365	58,975	47,839	31.7	26.4	31.2	Clare
Corcaigh*	78,813	65,540	85,887	259,074	258,517	223,838	23.3	20.2	27.7	Cork
Uarraig	53,466	41,783	38,945	79,423	84,163	70,939	40.2	33.2	35.4	Kerry
Luimneach*	24,536	23,217	32,624	108,471	109,834	91,905	18.4	17.4	26.2	Limerick*
Tiobraid Árann, An Trian Thuaidh	9,254	9,493	13,436	47,032	45,036	36,801	16.4	17.4	26.7	Tipperary, N.R.
Tiobraid Árann, An Trian Theas	13,457	12,592	17,611	60,557	60,262	47,943	18.2	17.3	26.9	Tipperary, S.R.
Port Láirge*	18,201	15,584	18,545	55,108	55,873	48,348	24.8	21.8	27.7	Waterford*
CONNACHTA	183,082	154,187	148,708	915,322	909,698	246,592	36.7	33.2	37.6	CONNACHT
Gaillimh	82,963	73,645	66,567	75,737	81,134	74,197	52.3	47.6	47.3	Galway
Liatroim	8,240	7,123	8,268	40,254	35,124	23,510	17.0	16.9	26.0	Leitrim
Maigh Eo	63,536	49,723	44,836	89,536	89,459	71,480	41.5	35.7	38.5	Mayo
Ros Comáin	14,845	13,090	14,745	59,087	55,575	41,151	20.1	19.1	26.4	Roscommon
Sígeach	13,498	10,606	14,292	50,708	48,346	36,254	21.0	18.0	28.3	Sligo
ULAIDN (cuid de)	78,336	64,388	64,942	190,598	183,143	140,810	28.3	26.0	31.4	ULSTER (part of)
An Carrán	11,820	10,227	11,881	60,943	56,052	41,485	16.2	15.4	22.3	Cavan
Dún na nGall	54,432	45,935	41,525	80,642	81,393	65,923	40.3	36.1	38.6	Donegal
Muineachán	9,084	8,226	10,936	48,953	45,698	33,402	15.7	15.3	24.7	Monaghan

\* An Chontae-Bhuirg san áireamh

Including County Borough

TÁBLA 4:- AN LÍON AGUS AN CÉATADÁN GAEILGEOIRÍ I NGACH CEANTAR UIRBEACH AGUS TUATHCHEANTAR I 1961, AGUS AN CÉATADÁN COMPARÁIDEACH I 1946 - DAÓINE 3 BLIANA D'AOIS AGUS OS A CHIONN.

TABLE 4:- NUMBER AND PERCENTAGE OF IRISH SPEAKERS IN EACH URBAN AND RURAL DISTRICT IN 1961, WITH COMPARATIVE PERCENTAGE FIGURES FOR 1946 - PERSONS 3 YEARS OF AGE AND OVER.

Nóta:- Sna cásanna nach bhfuil figiúirí comparáideacha ar fáil dóibh cuirtear ...

Note:- Cases where comparative figures are not available are indicated by ...

Ceantar Uirbeach nó Tuathcheantar	An tIomlán Total	Gaeilgeoirí Irish speakers	Neamh-Ghaeilgeoirí Non-Irish speakers	Gaeilgeoirí mar chéatadán den iomlán Irish speakers as percentage of total		Urban or Rural District
				1946	1961	
				%	%	
<b>AN tIOMLÁN</b>	<b>2,695,818</b>	<b>716,420</b>	<b>1,919,398</b>	<b>21.2</b>	<b>27.2</b>	<b>TOTAL</b>
<b>CÚIGE LAIGHEAN</b>	<b>1,299,027</b>	<b>274,644</b>	<b>964,383</b>	<b>15.1</b>	<b>22.2</b>	<b>PROVINCE OF LEINSTER</b>
<b>CÚIGE MUMHAN</b>	<b>796,999</b>	<b>228,726</b>	<b>567,619</b>	<b>22.0</b>	<b>28.7</b>	<b>PROVINCE OF MUNSTER</b>
<b>CÚIGE CHONNACHT</b>	<b>995,300</b>	<b>148,708</b>	<b>246,892</b>	<b>33.2</b>	<b>37.6</b>	<b>PROVINCE OF CONNACHT</b>
<b>CÚIGE ULADH (cuid de)</b>	<b>205,182</b>	<b>64,942</b>	<b>140,810</b>	<b>26.0</b>	<b>31.4</b>	<b>PROVINCE OF ULSTER (part of)</b>
<b>LAIGHIN</b>						<b>LEINSTER</b>
<b>CONTAE CHEATHARLACH</b>	<b>90,971</b>	<b>7,147</b>	<b>29,824</b>	<b>14.4</b>	<b>29.1</b>	<b>CARLOW COUNTY</b>
Ceatharlach C.U.	7,117	1,771	5,346	18.9	24.9	Carlow U.D.
Bealach Conglais Uimh.2 T.C.	3,040	579	2,461	19.8	19.0	Baltinglass No.2 R.D.
Ceatharlach "	18,673	4,214	14,459	11.7	22.6	Carlow "
Baile Mhuine Bheag	1,880	440	1,440	14.3	23.4	Muinebeag (Bagenalstown) Town
Baile na Tuláí	1,595	553	1,042	21.2	34.7	Tullow Town
Béalbhacha Cheatharlach	1,084	418	666	10.5	38.6	Environs of Carlow
An chuid eile den T.C.	14,114	2,803	11,311	19.9	19.9	Remainder of R.D.
Uí Drona T.C.	2,141	583	1,558	14.5	27.2	Idrone R.D.
<b>CATHAIR AGUS CONTAE BHAILE ÁTHA CLIATH</b>	<b>666,929</b>	<b>140,876</b>	<b>525,447</b>	<b>15.5</b>	<b>21.1</b>	<b>DUBLIN CITY AND COUNTY</b>
<b>CATHAIR (nó CONTAE-BHUIRG) BHAILE ÁTHA CLIATH</b>	<b>499,397</b>	<b>101,869</b>	<b>397,534</b>	<b>15.1</b>	<b>20.4</b>	<b>DUBLIN CITY (or COUNTY BOROUGH)</b>
<b>CONTAE BHAILE ÁTHA CLIATH</b>	<b>166,926</b>	<b>39,013</b>	<b>127,913</b>	<b>16.9</b>	<b>29.4</b>	<b>DUBLIN COUNTY</b>
Buirg Dhún Laoghaire	44,932	8,911	36,021	17.3	19.8	Dun Laoghaire Borough
Baile an Ridire T.C.	23,999	5,854	18,145	15.2	24.4	Balrothery R.D.
Baile Brigín	2,745	668	2,077	14.0	24.3	Balbriggan Town
Baile Mhullach Íde	2,386	519	1,867	16.7	21.8	Malahide Town
Baile Roa	1,931	549	1,382	17.9	28.4	Rush Town
Baile na Sceirí	2,564	596	1,968	15.8	23.2	Skerries Town
Baile Shord	1,661	642	1,019	14.9	38.7	Swords Town
An chuid eile den T.C.	12,712	2,880	9,832	22.7	22.7	Remainder of R.D.
Cill Droichid Uimh.2 T.C.	7,360	1,748	5,612	16.8	23.8	Celbridge No.2 R.D.
Baile Ieamhcán-Doddsborough	1,565	371	1,194	...	23.7	Lucan-Doddsborough Town
An chuid eile den T.C.	5,795	1,377	4,418	...	23.8	Remainder of R.D.
Baile Átha Cliath Thuaidh T.C.	9,431	1,962	7,469	22.8	20.8	Dublin North, R.D.
Fo-bhailte Chathair Bhaile Átha Cliath Thuaidh	2,914	650	2,264	...	22.3	Dublin North City Suburbs
An chuid eile den T.C.	6,517	1,312	5,205	...	20.1	Remainder of R.D.
Baile Átha Cliath Theas T.C.	34,794	9,479	25,315	15.4	27.2	Dublin South R.D.
Baile Chluain Dolcáin	3,110	979	2,131	...	31.5	Clondalkin Town
Fo-bhailte Chathair Bhaile Átha Cliath Theas (cuid)	24,976	7,026	17,950	...	28.1	Dublin South City Suburbs (part)
An chuid eile den T.C.	6,708	1,474	5,234	...	22.0	Remainder of R.D.
Rath Dúin Uimh. 1 T.C.	46,410	11,059	35,351	14.6	23.8	Rathdown No.1 R.D.
Fo-bhailte Chathair Bhaile Átha Cliath Theas (cuid)	24,119	6,076	18,043	...	25.2	Dublin South City Suburbs (part)
Fo-bhailte Dhún Laoghaire	18,684	4,206	14,478	...	22.5	Dun Laoghaire Suburbs
Béalbhacha Bhré (cuid)	253	41	212	...	16.2	Environs of Bray (part)
An chuid eile den T.C.	3,354	736	2,618	...	21.9	Remainder of R.D.
<b>CONTAE CHILL DARA</b>	<b>59,799</b>	<b>18,299</b>	<b>44,800</b>	<b>15.6</b>	<b>25.6</b>	<b>KILDARE COUNTY</b>
Áth Í C.U.	3,593	730	2,863	12.1	20.3	Athy U.D.
Nás "	3,718	1,035	2,683	17.7	27.8	Naas "

TÁBLA 4 (ar lean):- An líon agus an céatadán Gaeilgeoirí i ngach Ceantar Uirbeach agus Tuathcheantar i 1961, agus an céatadán comparáideach i 1946 - Daoine 3 bliana d'aois agus os a chionn.

TABLE 4 (contd.): - Number and percentage of Irish speakers in each Urban and Rural District in 1961, with comparative percentage figures for 1946 - Persons 3 years of age and over.

Ceantar Uirbeach nó Tuathcheantar	An tIomlán Total	Gaeilgeoirí Irish speakers	Neamh- Ghaeilgeoirí Non-Irish speakers	Gaeilgeoirí mar chéatadán den iomlán Irish speakers as percentage of total		Urban or Rural District
				1946	1961	
				%	%	
<b>CONTAE CHILL DARA (ar lean)</b>						<b>KILDARE COUNTY (contd.)</b>
Áth Í Uimh. 1 T.C.	12,091	2,661	9,430	11.9	22.0	Athy No. 1 R.D.
Cill Droichid Uimh. 1 "	9,091	2,664	6,427	19.7	29.3	Celbridge No. 1 "
Baile Mhagh Nuad	1,675	784	891	...	46.8	Maynooth Town
An chuid eile den T.C.	7,416	1,880	5,536	...	25.4	Remainder of R.D.
Éadan Doire Uimh. 2 T.C.	5,353	1,068	4,285	15.9	20.0	Edenderry No. 2 R.D.
Nás Uimh. 1 "	25,947	7,135	18,812	16.2	27.5	Naas No. 1 "
Baile Dhroichead Nua	3,367	988	2,379	20.3	29.3	Droichead Nua(Newbridge)Town
Baile Chill Dara	2,356	770	1,586	18.7	32.7	Kildare Town
Béalbhacha Dhroichead Nua	675	278	397	15.4	41.2	Environs of Droichead Nua
An chuid eile den T.C.	19,549	5,099	14,450	...	26.1	Remainder of R.D.
<b>CONTAE CHILL CHAINNIGH</b>						<b>KILKENNY COUNTY</b>
Cill Chainnigh C.U.	9,501	3,027	6,474	23.7	31.9	Kilkenny U.D.
Callainn T.C.	5,566	1,285	4,281	15.0	23.1	Callan R.D.
Baile Challainn	1,254	340	914	16.7	27.1	Callan Town
An chuid eile den T.C.	4,312	945	3,367	14.6	21.9	Remainder of R.D.
Carrraig na Siúire Uimh. 3 T.C.	2,978	757	2,221	19.3	25.4	Carrick-on-Suir No. 3 R.D.
Caisleán an Chomair "	6,852	1,625	5,227	14.9	23.7	Castlecomer "
Uí Deá "	2,026	498	1,528	16.6	24.6	Ida "
Cill Chainnigh "	10,497	2,718	7,779	13.8	25.9	Kilkenny "
Béalbhacha Chill Chainnigh	1,753	435	1,318	...	24.8	Environs of Kilkenny
An chuid eile den T.C.	8,744	2,283	6,461	...	26.1	Remainder of R.D.
Baile Mhic Andáin T.C.	9,542	2,075	7,467	13.9	21.7	Thomastown R.D.
Áth na nUrlainn "	4,078	877	3,201	12.7	21.5	Urlingford "
Port Láirge Uimh. 2 "	6,629	1,813	4,816	13.6	27.3	Waterford No. 2 "
<b>CONTAE LAOISE</b>						<b>LAOIGHIS COUNTY</b>
Mainistir Laoise T.C.	11,082	2,828	8,254	14.6	25.5	Abbeyleix R.D.
Áth Í Uimh. 2 "	4,204	1,043	3,161	8.5	24.8	Athy No. 2 "
Móinteach Mílic "	21,136	5,401	15,735	17.1	25.6	Mountmellick "
Baile Mhóinteach Mílic	2,254	582	1,672	25.1	25.8	Mountmellick Town
Baile Chúil an tSúdaire(cuid)	1,875	490	1,385	13.1	26.1	Portarlinton Town(part)
Baile Phort Laoise	2,931	1,018	1,913	17.5	34.7	Portlaoighise(Maryborough) Town
Béalbhacha Mhóinteach Mílic	154	26	128	...	16.9	Environs of Mountmellick
Béalbhacha Phort Laoise	2,279	407	1,872	16.1	17.9	Environs of Portlaoighise
An chuid eile den T.C.	11,643	2,878	8,765	...	24.7	Remainder of R.D.
Ros Cré Uimh. 3 T.C.	2,611	662	1,949	20.7	25.4	Roscrea No. 3 R.D.
Sliabh Margaidh "	3,164	797	2,367	14.4	25.2	Slievemargy "
<b>CONTAE AN LONGPHOIRT</b>						<b>LONGFORD COUNTY</b>
An Longphort C.U.	3,331	995	2,336	20.8	29.9	Longford U.D.
Baile Uí Mhatháin T.C.	5,834	1,388	4,446	15.4	23.8	Ballymahon R.D.
Gránard Uimh. 1 "	8,355	1,839	6,516	15.8	22.0	Gránard No. 1 "
Baile Ghránard	975	305	670	18.8	31.3	Gránard Town
An chuid eile den T.C.	7,380	1,534	5,846	15.4	20.8	Remainder of R.D.
An Longphort T.C.	11,298	3,097	8,201	16.9	27.4	Longford R.D.
Béalbhacha an Longphoirt	484	87	397	...	18.0	Environs of Longford
An chuid eile den T.C.	10,814	3,010	7,804	...	27.8	Remainder of R.D.
<b>CONTAE LÚ</b>						<b>LOUTH COUNTY</b>
Droichead Átha C.U.	15,893	3,317	12,576	13.4	20.9	Drogheda U.D.
Dún Dealgan "	18,455	4,298	14,157	14.0	23.3	Dundalk "

TÁBLA 4 (ar lean): - An líon agus an céatadán Gaeilgeoirí i ngach Ceantar Uirbeach agus Tuathcheantar i 1961, agus an céatadán comparáideach i 1946 - Daoine 3 bliana d'aois agus os a chionn.

TABLE 4 (contd.): - Number and percentage of Irish speakers in each Urban and Rural District in 1961 with comparative percentage figures for 1946 - Persons 3 years of age and over

Ceantar Uirbeach nó Tuathcheantar	An tIomlán Total	Gaeilgeoirí Irish speakers	Neamh- Ghaeilgeoirí Non-Irish speakers	Gaeilgeoirí mar chéatadán den iomlán Irish speakers as percentage of total		Urban or Rural District			
				1946	1961				
				%	%				
<b>CONTAE LÚ (ar lean)</b>						<b>LOUTH COUNTY (contd.)</b>			
Baile Átha Fhirdhia Uimh. 1 T.C.	10,943	2,125	8,818	13.4	19.4	Ardee No. 1	R.D.		
Baile Átha Fhirdhia An chuid eile den T.C.	2,526 8,417	582 1,543	1,944 6,874	16.7 12.6	23.0 18.3	Ardee Town Remainder of R.D.			
Dún Dealgan Béalbhacha Dhún Dealgan An chuid eile den T.C.	12,906 1,317 11,589	3,285 352 2,933	9,621 965 8,656	15.8 ... ... 25.3	25.5 26.7	Dundalk Environs of Dundalk Remainder of R.D.	R.D.		
Lú T.C.	4,672	881	3,791	12.6	18.9	Louth	R.D.		
<b>CONTAE NA MÍ</b>				<b>60,652</b>	<b>14,648</b>	<b>46,004</b>	<b>16.8</b>	<b>24.2</b>	<b>HEATH COUNTY</b>
An Uaimh Ceanannus Mór Baile Átha Troim Baile Átha Fhirdhia Uimh. 2 T.C.	3,694 2,024 1,286 2,356	949 505 261 327	2,745 1,519 1,025 2,029	18.6 19.6 18.8 16.4	25.7 25.0 20.3 13.9	An Uaimh (Navan) Ceanannus Mor (Kells) Trim Ardee No. 2	U.D. " " R.D.		
Domhnach Seachlainn Ceanannus Mór An Mhí An Uaimh Béalbhacha na hUaimhe An chuid eile den T.C. An Sean-chaisleán Baile Átha Troim Béalbhacha Bhaile Átha Troim An chuid eile den T.C.	9,354 9,008 7,258 10,192 1,168 9,024 3,748 11,732 370 11,362	2,407 2,265 1,940 2,635 269 2,366 671 2,688 36 2,652	6,947 6,743 5,318 7,557 899 6,658 3,077 9,044 334 8,710	17.4 16.2 14.5 16.8 ... ... 14.2 16.5 ... ... 23.3	25.7 25.1 26.7 25.9 23.0 26.2 17.9 22.9 9.7 23.3	Dunshaughlin Kells Meath Navan Environs of An Uaimh Remainder of R.D. Oldcastle Trim Environs of Trim Remainder of R.D.	" " " " " R.D. " "		
<b>CONTAE UÍBH PHAILÍ</b>				<b>47,930</b>	<b>10,759</b>	<b>37,171</b>	<b>13.8</b>	<b>22.4</b>	<b>OFFALY COUNTY</b>
Biorra An Tulach Mhór Biorra Uimh. 1 Béalbhacha Biorra (cuid) An chuid eile den T.C. Éadan Doire Uimh. 1 Baile Éadan Doire Béalbhacha Éadan Doire An chuid eile den T.C. Ros Cré Uimh. 2 An Tulach Mhór Baile Chlárach Baile Chúil an tSúdaire (cuid) An chuid eile den T.C.	2,982 5,739 13,363 467 12,896 6,919 2,497 90 4,332 4,252 14,675 2,320 752 11,603	904 1,280 2,819 101 2,718 1,628 563 8 1,057 1,013 3,115 518 224 2,373	2,078 4,459 10,544 366 10,178 5,291 1,934 82 3,275 3,239 11,560 1,802 528 9,230	17.1 15.5 11.5 ... ... 13.8 13.3 14.1 ... 15.2 14.1 7.2 17.1 14.7	30.3 22.3 21.1 21.6 21.1 23.5 22.5 8.9 24.4 23.8 21.2 22.3 29.8 20.5	Birr Tullamore Birr No. 1 Environs of Birr (pt.) Remainder of R.D. Edenderry No. 1 Edenderry Town Environs of Edenderry Remainder of R.D. Roscrea No. 2 Tullamore Clara Town Portarlinton Town (pt.) Remainder of R.D.	U.D. " R.D. " R.D. R.D. " " R.D. " " " R.D. "		
<b>CONTAE NA hIARMHÍ</b>				<b>49,287</b>	<b>12,175</b>	<b>37,112</b>	<b>15.1</b>	<b>24.7</b>	<b>WESTMEATH COUNTY</b>
Áth Luain Áth Luain Uimh. 1 Béalbhacha Átha Luain (cuid) An chuid eile den T.C. An Baile Mór An Chúil Dealbhna An Muileann Cearr Baile an Mhuilinn Chearr Béalbhacha an Mhuilinn Chearr An chuid eile den T.C.	8,844 7,112 798 6,314 2,026 2,265 5,544 23,496 5,434 1,528 16,534	2,590 1,804 239 1,565 360 525 1,511 5,385 1,507 169 3,709	6,254 5,308 559 4,749 1,666 1,740 4,033 18,111 3,927 1,359 12,825	19.7 15.1 ... ... 8.5 14.2 16.6 14.0 18.1 13.0 ... 22.4	29.3 25.4 29.9 24.8 17.8 23.2 27.3 22.9 27.7 11.1 22.4	Athlone Athlone No. 1 Environs of Athlone (pt.) Remainder of R.D. Ballymore Coole Delvin Mullingar Mullingar Town Environs of Mullingar Remainder of R.D.	U.D. R.D. " R.D. " " " " " R.D. R.D. "		

TÁBLA 4 (ar lean):- An líon agus an céatadán Gaeilgeoirí i ngach Ceantar Uirbeach agus Tuathcheantar i 1961, agus an céatadán comparáideach i 1946 - Daoine 3 bliana d'aois agus os a chionn

TABLE 4 (contd.): - Number and percentage of Irish speakers in each Urban and Rural District in 1961 with comparative percentage figures for 1946 - Persons 3 years of age and over.

Ceantar Uirbeach nó Tuathcheantar	An tIomlán Total	Gaeilgeoirí Irish speakers	Neamh- Ghaeilgeoirí Non-Irish speakers	Gaeilgeoirí mar chéatadán den iomlán Irish speakers as percentage of total		Urban or Rural District
				1946	1961	
				%	%	
<b>CONTAE LOCH GARMAN</b>	<b>77,874</b>	<b>16,425</b>	<b>61,449</b>	<b>13.2</b>	<b>21.1</b>	<b>WEXFORD COUNTY</b>
Inis Córthaidh C.U.	5,364	1,352	4,012	15.3	25.2	Enniscorthy U.D.
Ros Mhic Thriúin "	4,207	898	3,309	19.2	21.3	New Ross "
Loch Garman "	10,523	2,463	8,060	18.0	23.4	Wexford "
Inis Córthaidh T.C.	19,233	3,567	15,666	10.2	18.5	Enniscorthy R.D.
Béalbhacha Inis Córthaidh	458	93	365	...	20.3	Environs of Enniscorthy
An chuid eile den T.C.	18,775	3,474	15,301	...	18.5	Remainder of R.D.
Guaire T.C.	11,930	2,339	9,591	13.0	19.6	Gorey R.D.
Baile Ghuairé	2,472	703	1,769	20.7	28.4	Gorey Town
An chuid eile den T.C.	9,458	1,636	7,822	11.1	17.3	Remainder of R.D.
Ros Mhic Thriúin T.C.	11,465	2,900	8,565	13.8	25.3	New Ross R.D.
Loch Garman "	15,152	2,906	12,246	11.3	19.2	Wexford "
Béalbhacha Loch Garman	870	273	597	...	31.4	Environs of Wexford
An chuid eile den T.C.	14,282	2,633	11,649	...	18.4	Remainder of R.D.
<b>CONTAE CHILL MHANTÁIN</b>	<b>54,644</b>	<b>10,690</b>	<b>43,954</b>	<b>11.7</b>	<b>19.6</b>	<b>WICKLOW COUNTY</b>
An tInbhear Mór C.U.	4,983	1,044	3,939	14.0	21.0	Arklow U.D.
Bré "	10,885	1,896	8,989	11.9	17.4	Bray "
Cill Mhantáin "	2,913	593	2,320	16.1	20.4	Wicklow "
Bealach Conglais Uimh. 1 T.C.	8,002	1,663	6,339	12.2	20.8	Baltinglass No. 1 R.D.
Ráth Dúin Uimh. 2 "	6,770	1,458	5,312	13.0	21.5	Rathdown No. 2 "
Béalbhacha Bhré (cuid)	614	127	487	...	20.7	Environs of Bray (pt.)
An Chloch Liath-Baile Dheilgne (cuid)	3,318	683	2,635	...	20.6	Greystones-Delgany Town (pt.)
An chuid eile den T.C.	2,838	648	2,190	...	22.8	Remainder of R.D.
Ráth Droma T.C.	15,491	3,003	12,488	10.6	19.4	Rathdrum R.D.
An Chloch Liath-Baile Dheilgne (cuid)	37	8	29	...	21.6	Greystones-Delgany Town (pt.)
An chuid eile den T.C.	15,454	2,995	12,459	...	19.4	Remainder of R.D.
Siól Éalaigh T.C.	5,600	1,033	4,567	8.7	18.4	Shillelagh R.D.
<b>MUNHAIN</b>						<b>MUNSTER</b>
<b>CONTAE AN CHLÁIR</b>	<b>69,517</b>	<b>21,678</b>	<b>47,839</b>	<b>26.4</b>	<b>31.2</b>	<b>CLARE COUNTY</b>
Inis C.U.	5,328	1,637	3,691	26.6	30.7	Ennis U.D.
Cill Rois "	2,678	567	2,111	21.7	21.2	Kilrush "
Baile Uí Bheacháin T.C.	2,618	1,151	1,467	44.5	44.0	Ballyvaghan R.D.
Cora Finne "	2,934	750	2,184	28.6	25.6	Corrofin "
Inis "	12,233	4,054	8,179	24.0	33.1	Ennis "
Béalbhacha na hInse	2,573	613	1,960	...	23.8	Environs of Ennis
An chuid eile den T.C.	9,660	3,441	6,219	...	35.6	Remainder of R.D.
Inis Díomáin T.C.	10,366	3,894	6,472	32.2	37.6	Ennistimon R.D.
Cill an Disirt "	4,991	1,265	3,726	21.4	25.3	Killadysert "
Cill Rois "	13,337	3,867	9,470	29.2	29.0	Kilrush "
Baile Chill Chaoidhe	1,336	364	972	21.8	27.2	Kilkee Town
An chuid eile den T.C.	12,001	3,503	8,498	30.1	29.2	Remainder of R.D.
Míleac T.C.	4,513	1,313	3,200	20.6	29.1	Meelick R.D.
An Scairbh "	5,377	1,635	3,742	20.7	30.4	Scarriff "
An Tulach "	5,142	1,545	3,597	20.2	30.0	Tulla "
<b>CATHAIR AGUS CONTAE CHORCAÍ</b>	<b>309,725</b>	<b>85,887</b>	<b>223,838</b>	<b>20.2</b>	<b>27.7</b>	<b>CORK CITY AND COUNTY</b>
<b>CATHAIR (NÓ CONTAE-BHUIRG) CHORCAÍ</b>	<b>72,601</b>	<b>16,442</b>	<b>56,159</b>	<b>16.2</b>	<b>22.6</b>	<b>CORK CITY (OR COUNTY BOROUGH)</b>
<b>CONTAE CHORCAÍ</b>	<b>237,124</b>	<b>69,445</b>	<b>167,679</b>	<b>21.4</b>	<b>29.3</b>	<b>CORK COUNTY</b>
Cloch na Coillte C.U.	2,284	702	1,582	19.0	30.7	Clonakilty U.D.
Cóbh "	4,912	920	3,992	16.2	18.7	Cobh "
Mainistir Fhear Maighe "	3,045	960	2,085	21.3	31.5	Fermoy "
Cionn tSaile "	1,525	319	1,206	19.3	20.9	Kinsale "

TÁBLA 4 (ar lean): - An líon agus an céatadán Gaeilgeoirí i ngach Ceantar Uirbeach agus Tuathcheantar i 1961, agus an céatadán comparáideach i 1946 - Daoine 3 bliana d'aois agus os a chionn.

TABLE 4 (contd.): - Number and percentage of Irish speakers in each Urban and Rural District in 1961, with comparative percentage figures for 1946 - Persons 3 years of age and over.

Ceantar Uirbeach nó Tuathcheantar	An tIomlán Total	Gaeilgeoirí Irish speakers	Neamh- Ghaeilgeoirí Non-Irish speakers	Gaeilgeoirí mar chéatadán den iomlán Irish speakers as percentage of total		Urban or Rural District	
				1946	1961		
				%	%		
<b>CONTAE CHORCAÍ (ar lean)</b>						<b>CORK COUNTY (contd.)</b>	
Magh Chromtha C.U.	2,064	636	1,428	24.8	30.8	Macroom	U.D.
Mala "	5,206	1,789	3,417	20.0	34.4	Mallow	"
Mainistir na Corann "	2,614	704	1,910	20.8	26.9	Middleton	"
An Sciobairín "	1,930	732	1,198	22.6	37.9	Skibbereen	"
Eochail "	4,724	1,086	3,638	17.3	23.0	Youghal	"
Droichead na Bandan T.C.	12,567	3,763	8,804	18.5	29.9	Bandon	R.D.
Baile Dhroichead na Bandan	2,196	827	1,369	19.5	37.7	Bandon Town	
Béalbhacha Droichead na Bandan	1,314	375	939	18.3	28.5	Environs of Bandon	
An chuid eile den T.C.	9,057	2,561	6,496		28.3	Remainder of R.D.	
Beantraí T.C.	7,419	2,512	4,907	30.4	33.9	Bantry	R.D.
Baile Bheantraí	2,133	709	1,424	22.0	33.2	Bantry Town	
An chuid eile den T.C.	5,286	1,803	3,483	33.5	34.1	Remainder of R.D.	
Baile Chaisleáin Bhéarra T.C.	4,788	1,893	2,895	49.3	39.5	Castletown	R.D.
Cloch na Coillte "	9,171	2,614	6,557	20.4	28.5	Clonakilty	"
Corcaigh "	60,336	16,787	43,549	18.1	27.8	Cork	"
Fo-bhailte Chathair Chorcaí Thuaidh	5,246	992	4,254	...	18.9	Cork North City Suburbs	
Fo-bhailte Chathair Chorcaí Theas	29,591	9,573	20,018	...	32.4	Cork South City Suburbs	
Baile an Phasáiste	2,399	569	1,830	23.8	23.7	Passage West Town	
Béalbhacha an Phasáiste	98	16	82	...	16.3	Environs of Passage West	
Béalbhacha Chóbh	783	129	654	...	16.5	Environs of Cobh	
An chuid eile den T.C.	22,219	5,508	16,711	...	24.8	Remainder of R.D.	
Dún Mánmhaí T.C.	7,874	2,504	5,370	24.9	31.8	Dunmanway	R.D.
Mainistir Fhear Maighe "	11,218	3,192	8,026	14.7	28.5	Fermoy	"
Béalbhacha Mhainistir Fhear Maighe	385	145	240	...	37.7	Environs of Fermoy	
An chuid eile den T.C.	10,833	3,047	7,786	...	28.1	Remainder of R.D.	
Ceann Toirc T.C.	16,760	4,579	12,181	20.6	27.3	Kanturk	R.D.
Baile Cheann Toirc	1,855	392	1,463	22.5	21.1	Kanturk Town	
An chuid eile den T.C.	14,905	4,187	10,718	20.4	28.1	Remainder of R.D.	
Cionn tSáile T.C.	7,560	1,544	6,016	14.4	20.4	Kinsale	R.D.
Béalbhacha Chionn tSáile	172	26	146	...	15.1	Environs of Kinsale	
An chuid eile den T.C.	7,388	1,518	5,870	...	20.5	Remainder of R.D.	
Magh Chromtha T.C.	12,031	5,480	6,551	39.2	45.5	Macroom	R.D.
Béalbhacha Mhagh Chromtha	82	43	39	...	52.4	Environs of Macroom	
An chuid eile den T.C.	11,949	5,437	6,512	...	45.5	Remainder of R.D.	
Mala	16,288	4,389	11,899	16.3	26.9	Mallow	R.D.
Baile Ráth Ioirc	1,822	585	1,237	15.2	32.1	Rathluirc(Charleville)Town	
Béalbhacha Mhala	92	28	64	16.4	30.4	Environs of Mallow	
An chuid eile den T.C.	14,374	3,776	10,598		26.3	Remainder of R.D.	
Mainistir na Corann T.C.	11,782	2,877	8,905	16.5	24.4	Middleton	R.D.
Béalbhacha Mhainistir na Corann	1,059	305	754	...	28.8	Environs of Middleton	
An chuid eile den T.C.	10,723	2,572	8,151	...	24.0	Remainder of R.D.	
Sráid an Mhuilinn T.C.	7,095	2,279	4,816	23.5	32.1	Millstreet	R.D.
Baile an Mhistéalaigh Uimh. 1 T.C.	6,542	2,044	4,498	16.2	31.2	Mitchelstown No. 1	"
Baile an Mhistéalaigh	2,455	838	1,617	18.9	34.1	Mitchelstown Town	
An chuid eile den T.C.	4,087	1,206	2,881	15.2	29.5	Remainder of R.D.	
An Sciobairín T.C.	10,571	3,389	7,182	26.8	32.1	Skibbereen	R.D.
An Scoil "	3,911	881	3,030	17.8	22.5	Skull	"
Eochail Uimh. 1 "	2,907	870	2,037	27.3	29.9	Youghal No. 1	"
Béalbhacha Eochail	86	18	68	...	20.9	Environs of Youghal	
An chuid eile den T.C.	2,821	852	1,969	...	30.2	Remainder of R.D.	
<b>CONTAE CHIARRAÍ</b>						<b>KERRY COUNTY</b>	
Cill Airne C.U.	6,508	1,772	4,736	27.5	27.2	Killarney	U.D.
Lios Tuathail "	2,694	967	1,727	22.0	35.9	Listowel	"
Tráigh Lí "	10,032	2,874	7,158	20.9	28.6	Tralee	"
Cathair Saidhbhín T.C.	10,906	5,949	4,957	65.0	54.5	Cahersiveen	R.D.
Baile Chathair Saidhbhín	1,568	771	797	49.8	49.2	Cahirciveen Town	
An chuid eile den T.C.	9,338	5,178	4,160	67.1	55.5	Remainder of R.D.	

TÁBLA 4 (ar lean):- An líon agus an céatadán Gaeilgeoirí i ngach Ceantar Uirbeach agus Tuathcheantar i 1961, agus an céatadán comparáideach i 1946 - Daoine 3 bliana d'aois agus os a chionn.

TABLE 4 (contd.): - Number and percentage of Irish speakers in each Urban and Rural District in 1961, with comparative percentage figures for 1946 - Persons 3 years of age and over.

Coantar Uirbeach nó Tuathcheantar	An tIomlán Total	Gaeilgeoirí Irish speakers	Neamh- Ghaeilgeoirí Non-Irish speakers	Gaeilgeoirí mar chéatadán den iomlán Irish speakers as percentage of total		Urban or Rural District
				1946	1961	
				%	%	
<b>CGNTAE CHIARRAÍ (ar lean)</b>						<b>KERRY COUNTY (contd.)</b>
An Daingean T.C.	9,219	6,641	2,578	71.4	72.0	Dingle R.D.
Neidín "	6,671	2,876	3,795	42.1	43.1	Kenmare "
Cill Airne "	20,395	6,461	13,934	27.3	31.7	Killarney "
Lios Tuathail "	20,742	5,610	15,132	21.7	27.0	Listowel "
Tráigh Lí "	22,717	5,795	16,922	20.5	25.5	Tralee "
Baile Oileán Chiarraí	1,572	342	1,230	...	21.8	Castleisland Town
Béalbhacha Thráigh Lí	638	212	426	...	33.2	Environs of Tralee
An chuid eile den T.C.	20,507	5,241	15,266	...	25.6	Remainder of R.D.
<b>CATHAIR AGUS CONTAE LUIMNIGH</b>	<b>124,529</b>	<b>32,624</b>	<b>91,905</b>	<b>17.4</b>	<b>26.2</b>	<b>LIMERICK CITY AND COUNTY</b>
<b>CATHAIR (NÓ CONTAE-BHUIRG) LUIMNIGH</b>	<b>46,872</b>	<b>12,115</b>	<b>34,757</b>	<b>16.8</b>	<b>25.8</b>	<b>LIMERICK CITY (OR COUNTY BOROUGH)</b>
<b>CONTAE LUIMNIGH</b>	<b>77,657</b>	<b>20,509</b>	<b>57,148</b>	<b>17.7</b>	<b>26.4</b>	<b>LIMERICK COUNTY</b>
Cromadh T.C.	8,449	2,284	6,165	17.8	27.0	Croom R.D.
An Gleann "	2,997	1,119	1,878	15.1	37.3	Glin "
Cill Mocheallóg "	14,107	3,469	10,638	18.0	24.6	Kilmallock "
Luimneach Uimh. 1 "	14,378	4,362	10,016	16.6	30.3	Limerick No. 1 "
Fo-bhailte Chathair Luimnigh	887	444	443	...	50.1	Limerick City Suburbs
An chuid eile den T.C.	13,491	3,918	9,573	...	29.0	Remainder of R.D.
Baile an Mhistéalaigh Uimh. 2 T.C.	3,199	703	2,496	15.7	22.0	Mitchelstown No. 2 R.D.
An Caisleán Nua "	19,047	5,017	14,030	20.8	26.3	Newcastle "
Baile an Chaisleáin Nua	2,368	611	1,757	16.0	25.8	Newcastle Town
An chuid eile den T.C.	16,679	4,406	12,273	21.5	26.4	Remainder of R.D.
Ráth Caola T.C.	11,013	2,583	8,430	17.6	23.5	Rathkeale R.D.
Baile Ráth Caola	1,330	342	988	15.1	25.7	Rathkeale Town
An chuid eile den T.C.	9,683	2,241	7,442	18.0	23.1	Remainder of R.D.
Tiobraid Árann Uimh. 2 T.C.	4,467	972	3,495	12.0	21.8	Tipperary No. 2 R.D.
<b>CONTAE THIOBRAID ÁRANN</b>	<b>118,791</b>	<b>31,047</b>	<b>84,744</b>	<b>17.3</b>	<b>26.8</b>	<b>TIPPERARY COUNTY</b>
<b>CONTAE THIOBRAID ÁRANN, AN TRIAM THUAIDH</b>	<b>50,237</b>	<b>13,436</b>	<b>36,801</b>	<b>17.4</b>	<b>26.7</b>	<b>TIPPERARY COUNTY, NORTH RIDING</b>
Aonach C.U.	4,000	1,306	2,694	21.3	32.7	Nenagh U.D.
An Teampall Mór "	1,669	678	991	29.2	40.6	Templemore "
Durlas "	5,964	2,168	3,796	26.0	36.4	Thurles "
Buiríos Uí Chéin T.C.	7,247	1,485	5,762	17.5	20.5	Borrisokane R.D.
Béalbhacha Bhorra (cuid)	133	46	87	...	34.6	Environs of Birr (pt.)
An chuid eile den T.C.	7,114	1,439	5,675	...	20.2	Remainder of R.D.
Aonach T.C.	12,940	3,189	9,751	15.7	24.6	Nenagh R.D.
Ros Cré Uimh. 1 "	6,643	1,825	4,818	16.5	27.5	Roscrea No. 1 "
Baile Ros Cré	3,101	864	2,237	17.6	27.9	Roscrea Town
An chuid eile den T.C.	3,542	961	2,581	15.8	27.1	Remainder of R.D.
Durlas T.C.	11,774	2,785	8,989	13.0	23.7	Thurles R.D.
Béalbhacha Dhurlas	205	61	144	...	29.8	Environs of Thurles
An chuid eile den T.C.	11,569	2,724	8,845	...	23.5	Remainder of R.D.
<b>CONTAE THIOBRAID ÁRANN, AN TRIAN THEAS</b>	<b>65,554</b>	<b>17,611</b>	<b>47,943</b>	<b>17.3</b>	<b>26.9</b>	<b>TIPPERARY COUNTY, SOUTH RIDING</b>
Carraig na Siúire C.U.	4,299	1,052	3,247	21.2	24.5	Carrick-on-Suir U.D.
Caiseal "	2,513	590	1,923	23.8	23.5	Cashel "
Cluain Meala "	9,862	3,053	6,809	16.4	31.0	Clonmel "
Tiobraid Árann "	4,360	1,228	3,132	18.5	28.2	Tipperary "
Carraig na Siúire Uimh. 1 T.C.	1,535	396	1,139	13.8	25.8	Carrick-on-Suir No. 1 R.D.
Caiseal "	12,326	3,157	9,169	18.1	25.6	Cashel "
Baile Fhiodh Ard	898	296	602	13.3	33.0	Fethard Town
An chuid eile den T.C.	11,428	2,861	8,567	18.5	25.0	Remainder of R.D.
An Oloichín T.C.	9,193	2,695	6,498	20.5	29.3	Clogheen R.D.
Baile na Cathrach	1,561	518	1,043	21.1	33.2	Cahir Town
An chuid eile den T.C.	7,632	2,177	5,455	20.3	28.5	Remainder of R.D.

TÁBLA 4 (ar lean):- An líon agus an céatadán Gaeilgeoirí i ngach Ceantar Uirbeach agus Tuathcheantar i 1961, agus an céatadán comparáideach i 1946 - Daoine 3 bliana d'aois agus os a chionn.

TABLE 4 (contd.): - Number and percentage of Irish speakers in each Urban and Rural District in 1961, with comparative percentage figures for 1946 - Persons 3 years of age and over.

Coantar Uirbeach nó Tuathcheantar	An tIomlán Total	Gaeilgeoirí Irish speakers	Neamh- Ghaeilgeoirí Non-Irish speakers	Gaeilgeoirí mar chéatadán den iomlán Irish speakers as percentage of total		Urban or Rural District
				1946	1961	
				%	%	
<b>CONTAE THIOBRAID ÁRANN, AN TRIAN THEAS (ar lean)</b>						<b>TIPPERARY COUNTY, SOUTH RIDING (contd.)</b>
Cluain Meala Uimh. 1 T.C.	3,550	780	2,770	13.7	22.0	Clonmel No. 1 R.D.
Béalbhacha Chluain Meala(cuid)	148	38	110	...	25.7	Environs of Clonmel (pt.)
An chuid eile den T.C.	3,402	742	2,660	...	21.8	Remainder of R.D.
Sliabh Ardachadh T.C.	5,721	1,407	4,314	12.7	24.6	Slievardagh R.D.
Tiobraid Árann Uimh. 1	12,195	3,253	8,942	15.3	26.7	Tipperary No. 1
<b>CATHAIR AGUS CONTAE PHORT LÁIRGE</b>	<b>66,893</b>	<b>18,545</b>	<b>48,348</b>	<b>21.8</b>	<b>27.7</b>	<b>WATERFORD CITY AND COUNTY</b>
<b>CATHAIR (NO CONTAE-BHUIRG) PHORT LÁIRGE</b>	<b>26,271</b>	<b>6,244</b>	<b>20,027</b>	<b>17.0</b>	<b>23.8</b>	<b>WATERFORD CITY (OR COUNTY BOROUGH)</b>
<b>CONTAE PHORT LÁIRGE</b>	<b>40,622</b>	<b>12,301</b>	<b>28,321</b>	<b>24.6</b>	<b>30.3</b>	<b>WATERFORD COUNTY</b>
Dún Garbhan C.U.	4,864	1,474	3,390	23.9	30.3	Dungarvan U.D.
Carrraig na Siúire Uimh. 2 T.C.	3,648	902	2,746	12.8	24.7	Carrick-on-Suir No. 2 R.D.
Cluain Meala Uimh. 2	1,993	555	1,438	25.3	27.8	Clonmel No. 2
Béalbhacha Chluain Meala(cuid)	263	82	181	...	31.2	Environs of Clonmel(pt.)
An chuid eile den T.C.	1,730	473	1,257	...	27.3	Remainder of R.D.
Dún Garbhan T.C.	6,022	2,777	3,245	42.8	46.1	Dungarvan R.D.
Coill Mhic Thomáisín	4,630	1,062	3,568	19.2	22.9	Kilmacthomas
Lios Mór	7,578	2,184	5,394	26.3	28.8	Lismore
Baile Lios Mór	770	192	578	22.6	24.9	Lismore Town
Béalbhacha Lios Mór	236	89	147	26.8	37.7	Environs of Lismore
An chuid eile den T.C.	6,572	1,903	4,669	...	29.0	Remainder of R.D.
Port Láirge Uimh. 1 T.C.	9,329	2,335	6,994	14.2	25.0	Waterford No. 1 R.D.
Baile na Trá Móire	2,699	783	1,916	17.8	29.0	Tramore Town
An chuid eile den T.C.	6,630	1,552	5,078	13.1	23.4	Remainder of R.D.
Eochail Uimh. 2 T.C.	2,558	1,012	1,546	39.2	39.6	Youghal No. 2 R.D.
<b>CONNACHTA</b>						<b>CONNACHT</b>
<b>CONTAE NA GAILLIMHE</b>						<b>GALWAY COUNTY</b>
Béal Átha na Sluaghe C.U.	5,377	1,130	4,247	29.1	21.0	Ballinasloe U.D.
Gaillimh	20,571	9,150	11,421	45.7	44.5	Galway
Béal Átha na Sluaghe Uimh. 1 T.C.	7,913	1,991	5,922	18.9	25.2	Ballinasloe No. 1 R.D.
An Clochán	9,109	5,029	4,080	61.9	55.2	Clifden
Gaillimh	17,343	13,153	4,190	84.6	75.8	Galway
Béalbhacha na Gaillimhe	1,578	866	712	...	54.9	Environs of Galway
An chuid eile den T.C.	15,765	12,287	3,478	...	77.9	Remainder of R.D.
Gleann na Madadh T.C.	7,400	2,423	4,977	37.2	32.7	Glennamaddy R.D.
An Gort	7,689	2,922	4,767	33.9	38.0	Gort
Baile Locha Riach	15,144	5,164	9,980	24.2	34.1	Loughrea
Baile Locha Riach	2,600	841	1,759	22.9	32.3	Loughrea Town
An chuid eile den T.C.	12,544	4,323	8,221	24.5	34.5	Remainder of R.D.
An Creagán T.C.	8,862	3,402	5,460	32.7	38.4	Mount Bellew R.D.
Uachtar Ard	10,723	9,321	1,402	88.2	86.9	Oughterard
Port Omna	6,569	2,102	4,467	24.5	32.0	Portumna
Tuaim	24,064	10,780	13,284	47.1	44.8	Tuam
Baile Thuama	3,264	1,348	1,916	39.9	41.3	Tuam Town
Béalbhacha Thuama	1,085	377	708	48.2	34.7	Environs of Tuam
An chuid eile den T.C.	19,715	9,055	10,660	...	45.9	Remainder of R.D.
<b>CONTAE LIATROMA</b>						<b>LEITRIM COUNTY</b>
Béal an Átha Móir T.C.	4,035	1,036	2,999	13.8	25.7	Ballinamore R.D.
Cora Droma Rúisc Uimh. 1	6,591	1,690	4,901	16.8	25.6	Carrick-on-Shannon No. 1
Cionn Locha	2,317	601	1,716	11.7	25.9	Kinlough
Cluainín Ui Ruairc	9,276	2,636	6,640	19.3	28.4	Manorhamilton
Maohail	9,559	2,305	7,254	17.0	24.1	Mohill

TÁBLA 4 (ar lean):- An líon agus an céatadán Gaeilgeoirí i ngach Ceantar Uirbeach agus Tuathcheantar i 1961, agus an céatadán comparáideach i 1946 - Daoine 3 bliana d'aois agus os a chionn.

TABLE 4 (contd.): - Number and percentage of Irish speakers in each Urban and Rural District in 1961, with comparative percentage figures for 1946 - Persons 3 years of age and over.

Ceantar Uirbeach nó Tuathcheantar	An tIomlán Total	Gaeilgeoirí Irish speakers	Neamh- Ghaeilgeoirí Non-Irish speakers	Gaeilgeoirí mar chéatadán den iomlán Irish speakers as percentage of total		Urban or Rural District
				1946	1961	
				%	%	
<b>CONTAE MHAIGH EO</b>	<b>116,916</b>	<b>44,836</b>	<b>71,480</b>	<b>35.7</b>	<b>38.8</b>	<b>MAYO COUNTY</b>
Béal an Átha C.U.	5,574	1,654	3,920	24.1	29.7	Ballina U.D.
Caisleán an Bharraigh "	5,183	2,193	2,990	32.8	42.3	Castlebar "
Cathair na Mart "	2,706	1,104	1,602	34.0	40.8	Westport "
Béal an Átha T.C.	16,708	4,812	11,896	26.4	28.8	Ballina R.D.
Baile an Róba "	12,723	6,261	6,462	47.8	49.2	Ballinrobe "
Béal an Mhuirthead "	10,662	7,574	3,088	74.3	71.0	Belmullet "
Caisleán an Bharraigh "	12,039	3,598	8,441	29.9	29.9	Castlebar "
Clár Clainne Muiris "	13,758	4,760	8,998	29.7	34.6	Claremorris "
Baile Chlár Clainne Muiris	1,418	610	808	...	43.0	Claremorris Town
An chuid eile den T.C.	12,340	4,150	8,190	...	33.6	Remainder of R.D.
Béal Átha na Muice T.C.	19,305	5,662	13,643	24.5	29.3	Swineford R.D.
Cathair na Mart "	17,658	7,218	10,440	40.4	40.9	Westport "
<b>CONTAE ROS COMÁIN</b>	<b>55,896</b>	<b>14,745</b>	<b>41,151</b>	<b>19.1</b>	<b>26.4</b>	<b>ROSCOMMON COUNTY</b>
Áth Luain Uimh. 2 T.C.	8,928	2,118	6,810	21.9	23.7	Athlone No. 2 R.D.
Béalbhacha Átha Luain(cuid)	209	94	115	...	45.0	Environs of Athlone (pt.)
An chuid eile den T.C.	8,719	2,024	6,695	...	23.2	Remainder of R.D.
Mainistir na Búille Uimh. 1 T.C.	11,211	3,172	8,039	17.2	28.3	Boyle No. 1 R.D.
Baile Mhainistir na Búille	1,613	488	1,125	17.9	30.3	Boyle Town
An chuid eile den T.C.	9,598	2,684	6,914	17.1	28.0	Remainder of R.D.
An Caisleán Riabhach T.C.	17,412	4,306	13,106	17.7	24.7	Castlereagh R.D.
Baile an Chaisleáin Riabhaigh	1,469	537	932	...	36.6	Castlerea Town
An chuid eile den T.C.	15,943	3,769	12,174	...	23.6	Remainder of R.D.
Ros Comáin T.C.	18,345	5,149	13,196	20.3	28.1	Roscommon R.D.
Baile Ros Comáin	1,514	428	1,086	27.6	28.3	Roscommon Town
Béalbhacha Ros Comáin	1,005	316	689	19.6	31.4	Environs of Roscommon
An chuid eile den T.C.	15,826	4,405	11,421	...	27.8	Remainder of R.D.
<b>CONTAE SHLIGIGH</b>	<b>50,846</b>	<b>14,292</b>	<b>36,254</b>	<b>18.0</b>	<b>28.3</b>	<b>SLIGO COUNTY</b>
Sligeach C.U.	12,267	3,291	8,976	18.7	26.8	Sligo U.D.
Mainistir na Búille Uimh. 2 T.C.	6,318	1,742	4,576	13.8	27.6	Boyle No. 2 R.D.
An Droim Mór Thiar "	7,694	2,181	5,513	15.6	28.3	Dromore West "
Sligeach "	15,052	4,465	10,587	19.5	29.7	Sligo "
Tobar an Choire "	9,215	2,613	6,602	19.8	28.4	Tobercurry "
<b>ULAI DH (CUID DE)</b>						<b>ULSTER (PART OF)</b>
<b>CONTAE AN CHABHÁIN</b>	<b>53,366</b>	<b>11,881</b>	<b>41,485</b>	<b>15.4</b>	<b>22.3</b>	<b>CAVAN COUNTY</b>
An Cabhán C.U.	2,980	771	2,209	18.0	25.9	Cavan U.D.
Coill an Chollaigh T.C.	8,838	1,930	6,908	11.8	21.8	Bailieborough R.D.
An Bábhún Bui "	4,850	1,271	3,579	14.1	26.2	Bawnboy "
Caisleán Rathain "	5,198	1,148	4,050	18.2	22.1	Castlerahan "
An Cabhán "	26,827	5,617	21,210	16.0	20.9	Cavan "
Baile Bhéal Tairbirt	1,043	294	749	23.6	28.2	Belturbet Town
Baile Mhuinchille	1,221	283	938	16.3	23.2	Cootehill Town
Béalbhacha Mhuinchille	133	50	83	...	37.6	Environs of Cootehill
Béalbhacha an Chabháin	711	175	536	15.7	24.6	Environs of Cavan
An chuid eile den T.C.	23,719	4,815	18,904	...	20.3	Remainder of R.D.
Inis Ceithleann Uimh. 2 T.C.	2,103	600	1,503	19.1	28.5	Enniskillen No. 2 R.D.
Mullach Odhráin "	2,570	544	2,026	12.7	21.2	Mullaghoran "
<b>CONTAE DHÚN NA nGALL</b>	<b>107,448</b>	<b>41,525</b>	<b>65,923</b>	<b>36.1</b>	<b>38.6</b>	<b>DONEGAL COUNTY</b>
Bun Cranncha C.U.	2,744	694	2,050	15.9	25.3	Bunrana U.D.
Dun Dobhráin "	1,261	509	752	18.4	40.4	Bundoran "
Leitir Ceanainn "	4,066	1,426	2,640	40.1	35.1	Letterkenny "

TÁBLA 4 (ar lean):- An líon agus an céatadán Gaeilgeoirí i ngach Ceantar Uirbeach agus Tuathcheantar i 1961, agus an céatadán comparáideach i 1946 - Daoine 3 bliana d'aois agus os a chionn.

TABLE 4 (contd.): - Number and percentage of Irish speakers in each Urban and Rural District in 1961, with comparative percentage figures for 1946 - Persons 3 years of age and over.

Ceantar Uirbeach nó Tuathcheantar	An tIomlán Total	Gaeilgeoirí Irish speakers	Neamh- Ghaeilgeoirí Non-Irish speakers	Gaeilgeoirí mar chéatadán den iomlán Irish speakers as percentage of total		Urban or Rural District			
				1946	1961				
				%	%				
<b>CONTAE DHÚN NA nGALL (ar lean)</b>				<b>DONEGAL COUNTY (contd.)</b>					
Béal Átha Seanaidh T.C.	4,995	1,443	3,552	13.1	28.9	Ballyshannon R.D.			
Baile Bhéal Átha Seanaidh	2,156	867	1,289	16.6	40.2	Ballyshannon Town			
An chuid eile den T.C.	2,839	576	2,263	11.0	20.3	Remainder of R.D.			
Dún na nGall T.C.	10,009	2,568	7,441	17.8	25.7	Donegal R.D.			
Dún Fionnachaidh "	9,876	8,077	1,799	83.6	81.8	Dunfanaghy "			
Na Gleannta "	19,176	13,403	5,773	73.0	69.9	Glenties "			
Inis Eoghain "	21,408	3,947	17,461	12.0	18.4	Inishowen "			
Béalbhacha Bhun Cranncha	193	48	145	...	24.9	Environs of Buncrana			
An chuid eile den T.C.	21,215	3,899	17,316	...	18.4	Remainder of R.D.			
Leitir Ceanainn T.C.	5,680	1,002	4,678	17.0	17.6	Letterkenny R.D.			
Baile na nGallóglach "	10,939	5,063	5,876	43.2	46.3	Millford "			
Srath an Urláir "	17,294	3,393	13,901	19.4	19.6	Stranorlar "			
<b>CONTAE MHUINEACHÁIN</b>				<b>44,338</b>	<b>10,936</b>	<b>33,402</b>	<b>15.3</b>	<b>24.7</b>	<b>MONAGHAN COUNTY</b>
Carraig Mhachaire Rois C.U.	1,817	496	1,321	21.5	27.3	Carrickmacross U.D.			
Baile na Lorgan "	1,995	567	1,428	19.8	28.4	Castleblayney "			
Cluain Eois "	1,943	739	1,204	15.8	38.0	Clones "			
Muineachán "	3,807	892	2,915	23.9	23.4	Monaghan "			
Carraig Mhachaire Rois T.C.	7,827	1,692	6,135	14.4	21.6	Carrickmacross R.D.			
Béalbhacha Charraig Mhachaire Rois	160	56	104	...	35.0	Environs of Carrickmacross			
An chuid eile den T.C.	7,667	1,636	6,031	...	21.3	Remainder of R.D.			
Baile na Lorgan T.C.	7,662	1,902	5,760	12.6	24.8	Castleblayney R.D.			
Baile Bhéal Átha Beithe	678	156	522	14.6	23.0	Ballybay Town			
Béalbhacha Bhéal Átha Beithe	297	57	240	12.4	19.2	Environs of Ballybay			
An chuid eile den T.C.	6,687	1,689	4,998	...	25.3	Remainder of R.D.			
Cluain Eois Uimh. 1 T.C.	5,587	1,358	4,229	15.5	24.3	Clones No. 1 R.D.			
Muineachán "	13,700	3,290	10,410	13.7	24.0	Monaghan "			
Béalbhacha Mhuineacháin	660	227	433	...	34.4	Environs of Monaghan			
An chuid eile den T.C.	13,040	3,063	9,977	...	23.5	Remainder of R.D.			

TÁBLA 5:- AN LÍON AGUS AN CÉATADÁN GAEILGEOIRÍ AGUS NEAMH-GHAEILGEOIRÍ, 3 BLIANA D'AOIS AGUS OS A CHIONN, I NGACH CÚIGE ARNA M-AICMIÚ DE RÉIR AOISHRÚPAÍ - 1936, 1946 AGUS 1961.

TABLE 5:- NUMBER AND PERCENTAGE OF IRISH SPEAKERS AND NON-IRISH SPEAKERS, 3 YEARS OF AGE AND OVER, IN EACH PROVINCE CLASSIFIED BY AGE GROUP - 1936, 1946 AND 1961.

Cúige (Province)	Bliain Year	An tIomlán Total	Aoisghrúpaí - Age group									
			3-4	5-9	10-14	15-19	20-24	25-34	35-44	45-54	55-64	65 agus os a chionn 65 and over
Gaeilgeoirí - Irish speakers												
An tIomlán (Total)	{ 1936 1946 1961	666 601 588,725 716,420	5,892 4,603 6,934	81,966 57,537 81,931	162,811 124,499 150,200	121,451 109,231 118,003	68,584 74,442 59,971	58,043 85,919 92,877	43,613 39,976 88,273	35,958 30,959 56,316	35,455 24,059 29,048	52,828 37,500 32,867
Laighin (Leinster)	{ 1936 1946 1961	183,378 180,755 274,644	1,069 715 1,958	28,725 18,506 32,023	58,680 43,285 60,264	39,590 38,597 48,059	21,725 28,981 27,395	15,242 29,293 40,051	8,950 10,057 34,792	5,202 6,055 17,775	2,625 3,283 7,211	1,570 1,983 5,116
Mumhain (Munster)	{ 1936 1946 1961	224,805 189,395 228,726	1,271 830 1,888	25,157 17,036 25,321	53,699 41,027 48,242	41,394 35,967 38,025	22,952 23,741 18,699	19,452 28,078 30,177	14,968 12,480 28,948	12,403 9,878 18,271	13,106 7,757 9,048	20,403 12,601 10,107
Connachta (Connacht)	{ 1936 1946 1961	183,082 154,187 148,708	2,168 1,928 2,064	18,877 15,102 17,052	34,593 28,093 28,844	29,170 25,252 22,628	17,512 15,738 9,686	16,358 20,500 15,842	13,970 11,969 17,572	12,947 10,414 14,334	14,268 8,845 8,699	23,219 16,346 11,987
Ulaidh (cuid de) (Ulster (part of))	{ 1936 1946 1961	75,336 64,388 64,342	1,384 1,130 1,024	9,207 6,893 7,535	15,839 12,094 12,850	11,297 9,415 9,291	6,395 5,982 4,191	6,991 8,048 6,807	5,725 5,470 6,961	5,406 4,612 5,936	5,456 4,174 4,090	7,636 6,570 5,657
Neamh-Ghaeilgeoirí - Non-Irish speakers												
An tIomlán (Total)	{ 1936 1946 1961	2,140,324 2,182,932 1,919,398	100,879 106,712 111,333	187,379 208,377 205,737	119,972 137,829 138,601	146,875 142,256 115,829	185,929 156,848 98,036	342,026 326,965 205,287	311,712 317,503 248,813	273,332 279,595 275,431	238,364 230,025 238,135	233,856 276,822 282,196
Laighin (Leinster)	{ 1936 1946 1961	966,434 1,017,491 964,383	44,364 49,664 56,816	83,193 101,159 106,932	56,686 70,723 74,895	68,930 72,335 65,664	86,718 79,944 57,774	160,750 153,881 113,448	142,339 147,339 125,960	124,443 126,778 130,024	103,102 103,514 111,250	95,909 112,154 121,620
Mumhain (Munster)	{ 1936 1946 1961	668,030 672,660 567,613	31,997 32,454 32,661	59,403 62,511 59,776	35,405 39,641 37,855	42,765 40,804 30,078	56,145 45,122 25,549	107,115 99,510 56,804	99,555 99,985 73,389	87,152 89,402 85,610	76,851 73,432 74,886	71,642 89,799 91,005
Connachta (Connacht)	{ 1936 1946 1961	315,322 309,638 246,592	16,245 15,862 14,525	29,007 28,466 25,235	16,654 16,646 15,740	20,665 17,197 11,799	26,487 18,778 8,734	46,310 45,321 21,502	44,572 44,374 30,868	38,642 40,854 38,336	35,937 33,720 33,614	40,803 48,420 46,239
Ulaidh (cuid de) (Ulster (part of))	{ 1936 1946 1961	190,538 183,143 140,810	8,273 8,732 7,331	15,776 16,241 13,794	11,227 10,819 10,111	14,515 11,920 8,288	16,579 13,004 5,979	27,851 28,253 13,533	25,246 25,805 18,596	23,095 22,561 21,461	22,474 19,359 18,385	25,502 26,449 23,332
Gaeilgeoirí mar chéatadán den iomlán - Irish speakers as percentage of total												
An tIomlán (Total)	{ 1936 1946 1961	23.7 21.2 27.2	5.5 4.1 5.9	30.4 21.6 28.5	57.6 47.5 52.0	45.3 43.4 50.5	26.9 32.2 38.0	14.5 20.8 31.1	12.3 11.2 26.2	11.6 10.0 17.0	12.9 9.5 10.9	18.4 11.9 10.4
Laighin (Leinster)	{ 1936 1946 1961	15.9 15.1 22.2	2.4 1.4 3.3	25.7 15.5 23.0	50.9 38.0 44.6	36.5 34.8 42.3	20.0 26.6 32.2	8.7 16.0 26.1	5.9 6.4 21.6	4.0 4.6 12.0	2.5 3.1 6.1	1.6 1.7 4.0
Mumhain (Munster)	{ 1936 1946 1961	25.2 22.0 28.7	3.8 2.5 5.5	29.8 21.4 29.8	60.3 50.9 56.0	49.2 46.8 55.8	29.0 34.5 42.3	15.4 22.0 34.7	13.1 11.1 28.3	12.5 9.9 17.6	14.6 9.6 10.8	22.2 12.3 10.0
Connachta (Connacht)	{ 1936 1946 1961	36.7 33.2 37.6	11.8 10.8 12.4	39.4 34.7 40.3	67.5 62.8 64.7	58.5 59.5 65.7	39.8 45.6 52.6	26.1 31.1 42.4	23.9 21.2 36.3	25.1 20.3 27.2	28.4 20.8 20.6	36.3 25.2 20.6
Ulaidh (cuid de) (Ulster (part of))	{ 1936 1946 1961	28.3 26.0 31.4	14.3 11.5 12.3	36.9 29.8 35.3	58.5 52.8 56.0	43.8 44.1 52.9	27.8 31.5 41.2	20.1 22.2 33.5	18.5 17.5 27.2	19.0 17.0 21.7	19.5 17.7 18.2	23.0 19.9 19.5

TÁBLA 6:- GAEILGEOIRÍ AGUS NEAMH-GHAEILGEOIRÍ,  
CONTAE AGUS CONTAE-BHUIRG

TABLE 6:- IRISH SPEAKERS AND NON-IRISH SPEAKERS,  
COUNTY AND COUNTY BOROUGH.

Oíge, Contae nó Contae-Bhuirg	Fireannaigh - Males										An tIomlán
	Aoisghrúpa - Age group										
	3-4	5-9	10-14	15-19	20-24	25-34	35-44	45-54	55-64	65 agus os a chionn	
<b>AN TIOMLÁN:</b> GAEILGEOIRÍ NEAMH-GHAEILGEOIRÍ	3,431 86,727	40,802 106,189	75,803 72,816	59,019 61,328	29,932 50,488	44,795 102,735	42,719 123,702	28,978 141,746	14,920 118,194	16,654 192,659	986,753 966,524
<b>LAIGHIN:</b> GAEILGEOIRÍ NEAMH-GHAEILGEOIRÍ	959 28,955	15,858 55,158	30,431 98,892	29,924 32,819	19,178 28,275	19,049 54,920	16,836 60,111	8,921 63,715	9,661 52,987	2,424 59,769	195,241 469,000
<b>Ceatharlach:</b> Gaeilgeoirí Neamh-Ghaeilgeoirí	30 734	537 1,369	959 937	644 805	306 678	409 1,414	381 1,593	219 1,703	85 1,556	43 1,767	3,613 12,556
<b>Contae-Bhuirg Bhallo Átha Cllath:</b> Gaeilgeoirí Neamh-Ghaeilgeoirí	299 11,530	5,094 22,143	10,039 16,293	8,356 13,750	5,568 12,923	8,106 23,114	6,083 22,236	3,400 22,849	1,470 19,195	950 16,189	49,365 180,222
<b>Buirg Dhún Laoghaire:</b> Gaeilgeoirí Neamh-Ghaeilgeoirí	30 869	457 1,637	892 1,280	816 1,061	390 957	562 1,816	571 1,812	342 2,215	127 1,769	118 1,778	4,305 15,194
<b>Ballo Átha Cllath:</b> Gaeilgeoirí Neamh-Ghaeilgeoirí	147 3,412	1,913 6,084	3,051 3,780	2,236 2,810	1,321 2,529	2,334 5,646	2,414 6,279	1,095 5,880	350 4,038	236 3,737	15,097 44,195
<b>Cill Dara:</b> Gaeilgeoirí Neamh-Ghaeilgeoirí	47 1,460	953 2,792	1,854 2,049	1,524 1,889	919 1,505	940 2,535	965 3,011	451 3,250	174 2,654	108 2,581	7,935 23,726
<b>Cill Chainnigh:</b> Gaeilgeoirí Neamh-Ghaeilgeoirí	64 1,278	940 2,450	1,871 1,494	1,443 1,411	609 1,073	937 2,275	872 2,927	426 3,380	184 2,971	104 3,492	7,450 22,751
<b>Laois:</b> Gaeilgeoirí Neamh-Ghaeilgeoirí	38 947	716 1,654	1,322 1,075	1,020 999	436 858	658 1,832	663 2,403	341 2,537	145 2,161	80 2,645	5,419 17,111
<b>An Longphort:</b> Gaeilgeoirí Neamh-Ghaeilgeoirí	25 556	460 1,187	1,034 715	658 600	285 443	354 1,094	348 1,671	211 1,887	63 1,546	48 2,027	3,486 11,726
<b>Lú:</b> Gaeilgeoirí Neamh-Ghaeilgeoirí	67 1,434	970 2,728	1,696 2,007	1,246 1,811	587 1,419	852 2,716	822 3,310	400 3,366	198 2,613	120 2,956	6,958 24,360
<b>An Mhí:</b> Gaeilgeoirí Neamh-Ghaeilgeoirí	62 1,440	931 2,789	1,647 2,013	1,345 1,631	588 1,220	798 2,452	844 3,123	515 3,467	236 2,940	219 3,314	7,185 24,389
<b>Uíbh Fhailí:</b> Gaeilgeoirí Neamh-Ghaeilgeoirí	35 1,149	628 2,149	1,331 1,479	992 1,384	482 1,024	684 2,116	640 2,758	326 2,786	116 2,321	57 2,845	5,291 20,011
<b>An Iarmhí:</b> Gaeilgeoirí Neamh-Ghaeilgeoirí	43 1,107	686 2,202	1,440 1,390	1,133 1,093	486 842	785 1,917	768 2,469	326 2,835	147 2,514	103 3,032	5,917 19,401
<b>Loch Garman:</b> Gaeilgeoirí Neamh-Ghaeilgeoirí	43 1,759	944 3,476	2,022 2,511	1,510 2,033	723 1,616	1,003 3,061	848 3,769	509 4,577	246 3,978	146 4,631	7,994 31,411
<b>Cill Mhantáin:</b> Gaeilgeoirí Neamh-Ghaeilgeoirí	29 1,280	629 2,498	1,273 1,869	1,001 1,542	478 1,188	627 2,332	617 2,750	360 2,983	120 2,731	92 2,774	5,226 21,947
<b>MUMHAIN:</b> GAEILGEOIRÍ NEAMH-GHAEILGEOIRÍ	952 16,627	12,602 30,998	24,069 19,916	18,990 16,603	9,476 19,761	14,697 29,970	14,272 37,132	9,581 44,614	4,594 37,668	8,170 49,257	114,409 289,886
<b>An Clár:</b> Gaeilgeoirí Neamh-Ghaeilgeoirí	58 1,329	1,061 2,419	2,329 1,568	1,927 1,169	824 951	1,346 2,366	1,352 3,335	999 4,193	505 3,749	628 4,690	11,029 25,769

3 BLIANA D'AOIS AGUS OS A CHIONN, I NGACH CÚIGE,  
ARNA n-AICMIÚ DE RÉIR AOISGRÚPA.

3 YEARS OF AGE AND OVER, IN EACH PROVINCE,  
CLASSIFIED BY AGE GROUP.

Baineannaigh - Females											Province, County or County Borough
Aoighrúpa - Age group										Total	
3-4	5-9	10-14	15-19	20-24	25-34	35-44	45-54	55-64	65 and over		
3,803	41,129	74,697	28,984	30,039	48,082	45,554	27,338	14,128	16,213	359,667	TOTAL:
84,606	99,548	65,785	84,501	47,548	102,552	125,111	133,685	120,001	149,837	952,874	IRISH SPEAKERS
											NON-IRISH SPEAKERS
999	18,165	29,033	24,138	14,217	21,002	17,986	8,884	9,850	2,692	139,403	LEINSTER:
27,861	51,774	36,003	32,845	29,499	59,128	68,849	66,309	58,263	67,852	495,383	IRISH SPEAKERS
											NON-IRISH SPEAKERS
31	477	897	651	299	446	393	189	88	63	3,534	Carlow:
712	1,189	823	595	500	1,236	1,491	1,536	1,430	1,756	11,268	Irish speakers
											Non-Irish speakers
323	5,234	9,408	9,017	7,131	9,020	6,652	3,476	1,304	933	52,498	Dublin Co. Borough:
11,226	21,317	15,709	16,323	15,457	27,594	28,309	28,885	25,259	27,233	217,312	Irish speakers
											Non-Irish speakers
37	442	905	816	484	670	648	341	149	114	4,606	Dun Laoghaire Borough:
900	1,636	1,255	1,413	1,301	2,336	2,628	2,985	2,832	3,541	20,827	Irish speakers
											Non-Irish speakers
128	1,931	2,941	2,364	1,186	2,603	2,364	926	332	230	15,005	Dublin*:
3,261	5,543	3,606	3,253	3,081	6,859	6,989	5,783	4,456	4,866	47,697	Irish speakers
											Non-Irish speakers
55	973	1,838	1,311	599	923	955	426	150	128	7,358	Kildare:
1,390	2,570	1,779	1,233	1,086	2,255	2,850	2,854	2,291	2,466	20,774	Irish speakers
											Non-Irish speakers
59	902	1,775	1,309	547	929	917	434	194	159	7,225	Kilkenny:
1,203	2,284	1,369	1,001	792	1,990	2,624	2,844	2,732	3,404	20,243	Irish speakers
											Non-Irish speakers
45	772	1,275	845	438	761	626	328	128	94	5,312	Laoghaire:
859	1,551	866	711	588	1,505	1,920	2,014	1,904	2,437	14,355	Irish speakers
											Non-Irish speakers
30	516	1,051	695	249	470	439	243	86	54	3,833	Longford:
601	957	592	420	305	893	1,362	1,454	1,302	1,887	9,773	Irish speakers
											Non-Irish speakers
48	888	1,687	1,197	645	923	810	376	213	161	6,948	Louth:
1,363	2,412	1,745	1,676	1,458	2,989	3,542	3,317	2,719	3,382	24,603	Irish speakers
											Non-Irish speakers
76	977	1,815	1,299	551	876	901	516	223	229	7,463	Meath:
1,322	2,492	1,653	1,284	918	2,389	2,881	2,908	2,582	3,186	21,615	Irish speakers
											Non-Irish speakers
42	731	1,431	968	399	724	641	298	138	96	5,468	Offaly:
1,099	2,051	1,248	981	764	1,844	2,327	2,184	2,030	2,632	17,160	Irish speakers
											Non-Irish speakers
40	725	1,455	1,140	503	889	844	364	168	130	6,258	Westmeath:
1,061	2,147	1,315	945	738	1,798	2,256	2,263	2,193	2,995	17,711	Irish speakers
											Non-Irish speakers
46	1,007	2,036	1,529	712	1,055	1,066	553	229	198	8,431	Wexford:
1,656	3,200	2,378	1,652	1,336	2,981	3,777	4,295	3,899	4,864	30,038	Irish speakers
											Non-Irish speakers
39	590	1,319	994	474	713	700	384	148	103	5,464	Wicklow:
1,208	2,425	1,665	1,358	1,175	2,459	2,893	2,987	2,634	3,203	22,007	Irish speakers
											Non-Irish speakers
896	12,719	24,173	19,038	9,223	15,480	14,676	8,690	4,454	5,937	114,323	MUNSTER:
16,034	28,838	17,939	13,475	11,788	27,434	36,287	40,996	37,218	47,748	277,727	IRISH SPEAKERS
											NON-IRISH SPEAKERS
55	1,044	2,337	1,855	764	1,370	1,388	833	452	551	10,649	Clare:
1,323	2,374	1,369	814	598	1,813	2,784	3,256	3,267	4,472	22,070	Irish speakers
											Non-Irish speakers

TÁBLA 6 (ar lean.): - Gaeilgeoirí agus Neamh-Ghaeilgeoirí,  
Contae agus Contae-Bhuirg.

TABLE 6 (contd.): - Irish speakers and non-Irish speakers,  
County and County Borough.

Cúige, Contae nó Contae-Bhuirg	Fireannaigh - Males										An tIomlán	
	Aoisghrúpa - Age group											
	3-4	5-9	10-14	15-19	20-24	25-34	35-44	45-54	55-64	65 agus os a chionn		
<b>Contae-Bhuirg Chorcaí:</b>												
Gaeilgeoirí	58	830	1,746	1,458	961	1,329	946	528	259	178	8,293	
Neamh-Ghaeilgeoirí	1,682	3,093	2,112	1,881	1,746	3,086	3,016	3,442	2,790	2,640	25,488	
<b>Corcaigh:</b>												
Gaeilgeoirí	276	3,797	7,052	5,604	2,884	4,605	4,561	2,997	1,345	1,540	34,661	
Neamh-Ghaeilgeoirí	4,814	8,601	5,417	4,595	3,973	8,762	11,143	13,405	11,522	13,410	85,642	
<b>Clarraí:</b>												
Gaeilgeoirí	236	2,099	3,629	2,897	1,315	2,154	2,386	2,224	1,202	1,715	19,857	
Neamh-Ghaeilgeoirí	2,023	3,890	2,435	2,217	1,574	3,489	4,858	6,340	4,826	6,004	37,656	
<b>Contae-Bhuirg Luimnigh:</b>												
Gaeilgeoirí	61	673	1,261	947	571	944	739	365	162	88	5,811	
Neamh-Ghaeilgeoirí	1,235	2,220	1,342	1,067	941	1,840	1,986	2,233	1,852	1,573	16,289	
<b>Lulmneach:</b>												
Gaeilgeoirí	76	1,180	2,507	1,927	783	1,164	1,210	708	286	178	10,019	
Neamh-Ghaeilgeoirí	1,642	3,401	2,234	1,696	1,299	2,810	3,910	4,824	3,884	4,769	30,469	
<b>Tiobraid Árann, An Trían Thuaidh:</b>												
Gaeilgeoirí	47	829	1,594	1,210	606	827	779	416	184	113	6,605	
Neamh-Ghaeilgeoirí	1,099	2,005	1,243	1,024	915	1,998	2,650	2,941	2,680	3,150	19,705	
<b>Tiobraid Árann, An Trían Theas:</b>												
Gaeilgeoirí	80	1,105	2,058	1,551	722	1,087	1,060	583	233	186	8,665	
Neamh-Ghaeilgeoirí	1,422	2,660	1,896	1,486	1,085	2,455	3,307	3,770	3,325	3,673	25,079	
<b>Contae-Bhuirg Phort Láirge:</b>												
Gaeilgeoirí	20	367	691	519	318	496	415	208	92	48	3,174	
Neamh-Ghaeilgeoirí	539	1,075	675	633	623	1,131	1,030	1,200	1,028	1,081	9,015	
<b>Port Láirge:</b>												
Gaeilgeoirí	40	661	1,202	950	492	745	824	553	326	496	6,289	
Neamh-Ghaeilgeoirí	842	1,574	994	835	654	1,433	1,897	2,266	2,012	2,267	14,774	
<b>CONNACHTA:</b>												
<b>GAEILGEOIRÍ</b>	<b>1,014</b>	<b>8,514</b>	<b>14,562</b>	<b>11,447</b>	<b>8,123</b>	<b>7,688</b>	<b>8,269</b>	<b>7,482</b>	<b>4,644</b>	<b>6,308</b>	<b>75,048</b>	
<b>NEAMH-GHAEILGEOIRÍ</b>	<b>7,970</b>	<b>13,021</b>	<b>8,594</b>	<b>7,101</b>	<b>8,119</b>	<b>11,799</b>	<b>16,801</b>	<b>21,880</b>	<b>17,712</b>	<b>23,717</b>	<b>132,864</b>	
<b>Gallimh:</b>												
Gaeilgeoirí	629	3,658	5,703	4,745	2,357	3,477	3,894	3,878	2,680	3,638	34,659	
Neamh-Ghaeilgeoirí	2,542	4,307	2,954	2,418	1,783	3,710	4,947	5,919	5,065	6,010	39,655	
<b>Liatroim:</b>												
Gaeilgeoirí	32	555	1,011	827	317	508	428	256	110	85	4,129	
Neamh-Ghaeilgeoirí	576	995	633	571	453	1,149	1,689	2,310	1,938	2,709	13,023	
<b>Malgh Eo:</b>												
Gaeilgeoirí	247	2,398	4,397	3,352	1,393	2,135	2,420	2,329	1,402	2,216	22,289	
Neamh-Ghaeilgeoirí	2,187	3,999	2,709	2,234	1,374	3,107	4,533	6,083	4,824	6,904	37,954	
<b>Ros Comáin:</b>												
Gaeilgeoirí	45	987	1,729	1,310	527	794	783	579	237	193	7,184	
Neamh-Ghaeilgeoirí	1,066	1,969	1,233	1,022	804	2,027	2,932	3,824	3,168	4,581	22,626	
<b>Sligeach:</b>												
Gaeilgeoirí	61	916	1,722	1,213	529	771	744	440	215	176	6,787	
Neamh-Ghaeilgeoirí	999	1,751	1,065	856	705	1,806	2,480	3,414	2,717	3,513	19,306	
<b>ULAIÐH (cuid de):</b>												
<b>GAEILGEOIRÍ</b>	<b>806</b>	<b>9,828</b>	<b>6,441</b>	<b>4,658</b>	<b>2,155</b>	<b>3,364</b>	<b>3,342</b>	<b>2,994</b>	<b>2,021</b>	<b>2,752</b>	<b>32,061</b>	
<b>NEAMH-GHAEILGEOIRÍ</b>	<b>9,775</b>	<b>7,072</b>	<b>8,414</b>	<b>4,808</b>	<b>3,333</b>	<b>7,246</b>	<b>9,878</b>	<b>11,867</b>	<b>9,767</b>	<b>11,917</b>	<b>75,074</b>	
<b>An Cabhán:</b>												
Gaeilgeoirí	44	760	1,567	1,122	467	729	561	315	152	128	5,845	
Neamh-Ghaeilgeoirí	1,133	2,005	1,458	1,168	911	2,251	3,160	3,644	3,084	3,986	22,800	
<b>Dún na nGall:</b>												
Gaeilgeoirí	412	2,293	3,472	2,516	1,236	1,954	2,233	2,420	1,752	2,530	20,818	
Neamh-Ghaeilgeoirí	1,769	3,450	2,943	2,656	1,678	3,095	4,209	5,306	4,207	5,145	34,458	
<b>Mulneachán:</b>												
Gaeilgeoirí	50	775	1,402	1,020	452	681	548	259	117	94	5,398	
Neamh-Ghaeilgeoirí	873	1,617	1,013	981	744	1,900	2,509	2,917	2,476	2,786	17,816	

3 bliana d'aois agus os a chionn, i ngach Cúige,  
arna n-aicmiú de réir aoisghrúpa.

3 years of age and over, in each Province,  
classified by age group.

Baineannaigh - Females										Total	Province, County or County Borough
Aoisghrúpa - Age group											
3-4	5-9	10-14	15-19	20-24	25-34	35-44	45-54	55-64	65 and over		
54 1,547	864 3,030	1,650 2,142	1,409 2,110	962 2,066	1,270 3,520	975 3,889	494 4,319	244 3,659	227 4,389	8,149 30,671	Cork Co. Borough: Irish speakers Non-Irish speakers
254 4,662	3,944 7,937	6,974 4,677	5,488 3,633	2,854 3,295	4,992 8,182	4,710 10,944	2,757 12,426	1,360 11,437	1,451 14,844	34,784 82,037	Cork: Irish speakers Non-Irish speakers
235 1,996	2,107 3,451	3,650 2,163	2,827 1,504	1,146 1,162	2,161 2,918	2,427 4,274	1,823 5,163	1,173 4,577	1,539 6,075	19,088 33,283	Kerry: Irish speakers Non-Irish speakers
47 1,178	706 2,145	1,301 1,396	1,080 1,139	693 1,083	1,072 2,128	780 2,411	371 2,517	140 2,083	114 2,388	6,304 18,468	Limerick Co. Borough: Irish speakers Non-Irish speakers
72 1,518	1,169 3,014	2,491 1,954	2,058 1,157	827 863	1,344 2,292	1,309 3,562	738 4,067	265 3,556	217 4,696	10,490 26,679	Limerick: Irish speakers Non-Irish speakers
68 1,026	849 1,813	1,582 1,000	1,265 700	572 664	889 1,761	830 2,268	442 2,528	201 2,291	133 3,045	6,831 17,096	Tipperary, N.R.: Irish speakers Non-Irish speakers
77 1,406	1,046 2,552	2,299 1,620	1,529 987	686 834	1,191 2,112	1,098 2,987	568 3,321	240 3,175	212 3,870	8,946 22,864	Tipperary, S.R.: Irish speakers Non-Irish speakers
28 580	360 1,062	682 780	563 829	305 719	455 1,394	335 1,349	189 1,441	87 1,256	66 1,602	3,070 11,012	Waterford Co. Borough: Irish speakers Non-Irish speakers
46 798	630 1,460	1,207 838	961 602	414 504	736 1,314	824 1,789	475 1,958	292 1,917	427 2,367	6,012 13,547	Waterford: Irish speakers Non-Irish speakers
1,050 7,155	8,533 12,214	14,282 7,146	11,181 4,698	4,563 3,615	8,157 9,703	9,303 14,287	6,852 16,786	4,055 15,902	5,679 22,522	73,660 114,028	CONNAUGHT: IRISH SPEAKERS NON-IRISH SPEAKERS
627 2,427	3,666 4,079	5,401 2,365	4,320 1,687	1,985 1,327	3,501 3,208	4,038 4,330	3,257 4,841	2,160 4,607	2,953 5,671	31,908 34,542	Galway: Irish speakers Non-Irish speakers
37 537	568 896	1,068 577	698 332	319 263	478 809	465 1,392	282 1,688	102 1,643	122 2,350	4,139 10,487	Leitrim: Irish speakers Non-Irish speakers
268 2,167	2,472 3,716	4,306 2,219	3,432 1,432	1,255 1,005	2,328 2,612	2,857 3,979	2,176 4,927	1,284 4,544	2,169 6,925	22,547 33,526	Mayo: Irish speakers Non-Irish speakers
63 1,111	891 1,879	1,770 1,026	1,432 608	435 487	937 1,609	967 2,344	594 2,695	263 2,700	209 4,066	7,561 18,525	Roscommon: Irish speakers Non-Irish speakers
55 913	941 1,644	1,737 959	1,299 639	569 533	913 1,465	976 2,242	543 2,635	246 2,408	226 3,510	7,505 16,948	Sligo: Irish speakers Non-Irish speakers
518 9,856	9,707 6,722	6,409 4,697	4,633 3,483	2,036 2,646	3,443 6,287	3,619 8,718	2,942 9,594	2,069 8,618	2,905 11,415	32,281 65,736	ULSTER (part of): IRISH SPEAKERS NON-IRISH SPEAKERS
40 1,054	758 2,015	1,597 1,219	1,112 735	437 580	763 1,749	673 2,579	355 2,716	172 2,515	129 3,523	6,036 18,685	Cavan: Irish speakers Non-Irish speakers
432 1,631	2,169 3,268	3,378 2,615	2,554 2,086	1,153 1,481	1,998 2,980	2,363 4,000	2,287 4,463	1,722 3,886	2,651 5,055	20,707 31,465	Donegal: Irish speakers Non-Irish speakers
46 871	780 1,439	1,434 863	967 662	446 585	682 1,558	583 2,139	300 2,415	175 2,217	125 2,837	5,538 15,586	Monaghan: Irish speakers Non-Irish speakers

TÁBLA 6A:- GAEILGEOIRÍ MAR CHÉATADÁN DEN  
TABLE 6A:- IRISH SPEAKERS AS A PERCENTAGE

Cúige, Contae nó Contae-Bhuirg	Fireannaigh - Males										An tIomlán
	Aoisghrúpa - Age group										
	3-4	5-9	10-14	15-19	20-24	25-34	35-44	45-54	55-64	65 agus os a chionn	
	%	%	%	%	%	%	%	%	%	%	%
<b>AN tIOMLÁN</b>	5.7	27.8	20.9	49.0	37.2	30.4	25.7	17.0	11.2	11.2	27.0
<b>LAIGHIN</b>	9.2	22.9	49.9	42.2	31.8	26.0	21.9	12.9	6.8	4.9	22.4
Ceatharlach	3.9	28.2	50.6	44.4	31.1	22.4	19.3	11.4	5.2	2.4	22.3
Contae-Bhuirg Bhaile Átha Cliath	2.5	18.7	38.1	37.8	30.1	26.0	21.5	13.0	7.1	5.5	21.5
Buirg Dhún Laoghaire	3.3	21.8	41.1	43.5	29.0	23.6	24.0	13.4	6.7	6.2	22.1
Baile Átha Cliath*	4.1	23.9	44.7	44.3	34.3	29.2	27.8	15.7	8.0	5.9	25.5
Cill Dara	3.1	25.4	47.5	44.7	37.9	27.1	24.3	12.2	6.2	4.0	25.1
Cill Chainnigh	4.8	27.7	55.6	50.6	36.2	29.2	23.0	11.2	5.8	2.9	24.7
Laois	3.9	30.2	55.2	50.5	33.7	26.4	21.6	11.8	6.3	2.9	24.1
An Longphort	4.3	27.9	59.1	52.3	39.1	24.4	17.2	10.1	3.9	2.3	22.9
Lú	4.5	26.2	45.8	40.8	29.3	23.9	19.9	10.6	7.0	3.9	22.2
An Mhí	4.1	25.0	45.0	45.2	32.5	24.6	21.3	12.9	7.4	6.2	22.8
Uíbh Fhailí	3.0	22.6	47.4	41.8	32.0	24.4	18.8	10.5	4.8	2.0	20.9
An Iarmhí	3.7	23.8	50.9	50.9	36.6	29.1	23.7	10.3	5.5	3.3	23.4
Loch Garman	2.4	21.4	44.6	42.6	30.9	24.7	18.4	10.0	5.8	3.1	20.9
Cill Mhantáin	2.2	20.1	40.5	39.4	28.7	21.2	18.3	10.8	4.2	3.2	19.2
<b>MUMHAIN</b>	5.4	28.9	54.7	53.4	40.8	39.4	27.8	17.7	10.9	10.7	28.9
An Clár	4.2	30.5	59.8	62.2	46.4	36.3	28.8	19.2	11.9	11.8	30.0
Contae-Bhuirg Chorcaí	3.3	21.2	45.3	43.7	35.5	30.1	23.9	13.3	8.5	6.3	24.5
Corcaigh	5.4	30.6	56.6	54.9	42.1	34.5	29.0	18.3	10.5	10.3	28.8
Ciarraí	10.4	35.0	59.8	56.6	45.5	38.2	32.9	26.0	19.9	22.2	34.5
Contae-Bhuirg Luimnigh	4.7	23.3	48.4	47.0	37.8	33.9	27.1	14.0	8.0	5.3	26.3
Luimneach	4.4	25.8	52.9	53.2	37.6	29.3	23.6	12.8	6.9	3.6	24.7
Tiobraid Árann, An Trian Thuaidh	4.1	29.3	56.2	54.2	39.8	29.3	22.7	12.4	6.4	3.5	25.1
Tiobraid Árann, An Trian Theas	5.3	29.3	52.0	51.1	40.0	30.7	24.3	13.4	6.5	4.8	25.7
Contae-Bhuirg Phort Láirge	3.6	25.5	50.6	45.1	33.8	30.5	28.7	14.8	8.2	4.3	26.0
Port Láirge	4.5	29.6	54.7	53.2	42.9	34.2	30.3	19.6	13.9	18.0	29.9
<b>CONNACHTA</b>	12.1	39.5	62.9	61.7	50.0	39.4	39.9	25.8	20.8	21.0	36.1
Gaillimh	19.8	45.9	65.9	66.2	56.9	48.4	44.0	39.6	34.6	37.7	46.6
Liatroim	5.3	35.8	61.5	59.2	41.2	30.7	20.2	10.0	5.4	3.0	24.1
Maigh Eo	10.1	37.5	61.9	60.0	50.3	40.7	34.8	27.7	22.5	24.3	37.0
Ros Comáin	4.1	33.4	58.4	56.2	39.6	28.1	21.1	13.2	7.0	4.0	24.1
Sligeach	5.8	34.3	61.8	58.6	42.9	29.9	23.1	11.4	7.3	4.8	26.0
Uladh (cuid de)	11.8	35.1	54.9	49.2	39.9	31.7	25.9	20.1	17.1	18.8	29.9
An Cabhán	3.7	27.5	51.8	49.0	33.9	24.5	15.1	8.0	4.7	3.1	20.4
Dún na nGall	18.9	39.9	54.1	48.6	42.4	38.7	34.7	31.3	29.4	33.0	37.7
Muineachán	5.4	32.4	58.1	51.0	38.0	26.4	17.9	8.2	4.5	3.3	23.3

\* Gan Buirg Dhún Laoghaire a áireamh

## LÍON IOMLÁN I NGACH AOISGHRÚPA.

## OF THE TOTAL IN EACH AGE GROUP.

Baineannaigh - Females											Province, County or County Borough
Aoisghrúpa - Age group										Total	
3-4	5-9	10-14	15-19	20-24	25-34	35-44	45-54	55-64	65 and over		
%	%	%	%	%	%	%	%	%	%	%	
6.0	29.2	53.2	52.0	38.7	31.9	26.7	17.0	10.8	9.8	27.4	TOTAL
9.8	23.8	45.9	42.4	32.5	26.2	21.4	11.8	5.7	9.8	22.0	LEINSTER
4.2	28.6	52.2	52.2	37.4	26.5	20.9	11.0	5.8	3.5	23.9	Carlow
2.8	19.7	37.5	35.6	31.6	24.6	19.0	10.7	4.9	3.3	19.5	Dublin Co. Borough
3.9	21.3	41.9	36.6	27.1	22.3	19.8	10.3	5.0	3.1	18.1	Dun Laoghaire Borough
3.8	25.8	44.9	42.1	27.8	27.5	25.3	13.8	6.9	4.5	23.9	Dublin*
3.8	27.5	50.8	51.5	35.5	29.0	25.1	13.0	6.1	4.9	26.2	Kildare
4.7	28.3	56.5	56.7	40.9	31.8	25.9	13.2	6.6	4.5	26.3	Kilkenny
5.0	33.2	59.6	54.3	42.7	33.6	24.6	14.0	6.3	3.7	27.0	Laoighis
4.8	35.0	64.0	62.3	44.9	34.5	24.4	14.3	6.2	2.8	28.2	Longford
3.4	26.9	49.2	41.7	30.7	23.6	18.6	10.2	7.3	4.5	22.0	Louth
5.4	28.2	52.3	50.3	37.5	26.8	23.8	15.1	8.0	6.7	25.7	Meath
3.7	26.3	53.4	49.7	34.3	28.2	21.6	12.0	6.4	3.5	24.2	Offaly
3.6	25.2	52.5	54.7	40.5	33.1	27.2	13.9	7.1	4.2	26.1	Westmeath
2.7	23.9	46.1	48.1	34.8	26.1	22.0	11.4	5.5	3.9	21.9	Wexford
3.1	19.6	44.2	42.3	28.7	22.5	19.5	11.4	5.3	3.1	19.9	Wicklow
8.8	30.6	57.4	58.6	43.9	36.1	28.8	17.8	10.7	9.4	29.2	MUNSTER
4.0	30.5	63.1	69.5	56.1	43.0	33.3	20.4	12.2	11.0	32.5	Clare
3.4	22.2	43.5	40.0	31.8	26.5	20.0	10.3	6.3	4.9	21.0	Cork Co. Borough
5.2	33.2	59.9	60.2	46.4	37.9	30.1	18.2	10.6	8.9	29.8	Cork
10.5	37.9	62.8	65.3	49.7	42.5	36.2	26.1	20.4	20.2	36.4	Kerry
3.8	24.8	48.2	58.7	39.0	33.5	24.4	12.8	6.3	4.6	25.4	Limerick Co. Borough
4.5	27.9	56.0	64.0	48.9	37.0	26.9	15.4	6.9	4.4	28.2	Limerick
6.2	31.9	61.3	64.4	46.3	33.5	26.8	14.9	8.1	4.2	28.5	Tipperary, N.R.
5.2	29.1	58.7	60.8	45.1	36.1	26.9	14.6	7.0	5.2	28.1	Tipperary, S.R.
4.6	25.3	46.6	40.4	29.8	24.6	19.9	11.6	6.5	4.0	21.8	Waterford Co. Borough
5.5	30.1	59.0	61.5	45.1	35.9	31.5	19.5	13.2	15.3	30.7	Waterford
12.8	41.1	66.7	70.4	58.8	45.7	39.4	29.0	20.3	20.1	39.2	CONNACHT
20.5	47.3	69.5	71.9	59.9	52.2	48.3	40.2	31.9	34.2	48.0	Galway
6.4	38.8	64.9	67.8	54.8	37.1	25.0	14.3	5.8	4.9	28.3	Leitrim
11.0	39.9	66.0	70.6	55.5	47.1	41.8	30.6	22.0	23.9	40.2	Mayo
5.4	32.2	63.3	70.2	47.2	36.8	29.2	18.1	8.9	4.9	29.0	Roscommon
5.7	36.4	64.4	67.0	51.6	38.4	30.3	17.1	9.3	6.0	30.7	Sligo
12.7	38.8	57.7	57.1	43.8	38.4	29.9	23.8	19.4	20.9	32.9	Ulster (part of)
3.7	27.3	56.7	60.2	43.0	30.4	20.7	11.6	6.4	3.5	24.4	Cavan
20.9	39.9	56.4	55.0	43.8	40.1	37.1	33.9	30.7	34.4	39.7	Donegal
5.0	35.2	62.4	59.4	43.3	30.4	21.4	11.0	7.3	4.2	26.2	Monaghan

\* Excluding Dun Laoghaire Borough

TÁBLA 7:- GAEILGEOIRÍ ARNA N-AICMIÚ DE RÉIR SLÍ BHEATHA.

TABLE 7:- IRISH SPEAKERS CLASSIFIED BY OCCUPATIONAL GROUP.

Slí Bheatha	Gaeilgeoirí		An tIomlán sa ghrúpa slite beatha		Gaeilgeoirí mar chéatadan den iomlán		Occupational group
	Irish speakers		Total in occupational group		Irish speakers as percentage of total		
	Fir	Mná	Fir	Mná	Fir	Mná	
<b>TALMHAÍOCHT</b>	<b>78,241</b>	<b>9,097</b>	<b>360,664</b>	<b>42,111</b>	<b>21.5</b>	<b>21.5</b>	<b>AGRICULTURAL OCCUPATIONS</b>
Feirmeoirí	33,396	4,386	181,193	29,138	18.4	15.1	Farmers
Faoi bhun 15 acra	7,316	1,368	24,366	6,106	30.0	22.4	Under 15 acres
15 agus faoi bhun 30 acra	8,014	1,122	45,999	7,692	17.4	14.6	15 and under 30 acres
30 " " " 50 "	8,042	901	46,863	6,515	17.2	13.8	30 " " 50 "
50 " " " 100 "	6,742	662	41,551	5,615	16.2	11.8	50 " " 100 "
100 " " " 200 "	2,481	259	17,011	2,497	14.6	10.4	100 " " 200 "
200 acra agus os a chionn	706	70	4,682	677	15.1	10.3	200 acres and over
Achar gan lua	95	4	721	36	13.2	11.1	Area not stated
Clann mhac, cliamhaineacha, clann iníon agus banchliamhaineacha feirmeoirí	26,269	3,563	71,667	8,335	36.7	42.7	Farmers' sons, sons-in-law, daughters and daughters-in-law
Deartháireacha agus deirfiúracha feirmeoirí	2,861	561	17,358	2,790	16.5	20.1	Farmers' brothers and sisters
Gaolta eile d'fheirmeoirí	1,504	321	6,572	1,278	22.9	25.1	Farmers' other relatives
Scλάβhaithe talmhaíochta ar iostas	1,153	3	8,326	28	13.8	10.7	Agricultural labourers, living in
Scλάβhaithe talmhaíochta nach bhfuil ar iostas	7,313	34	51,121	120	14.3	28.3	Agricultural labourers, living out
Oibrithe eile	2,745	169	14,327	422	19.2	40.0	Others
Oibrithe mianadóireachta, cairéalaíochta agus móna	1,161	-	6,212	6	18.7	-	Mining, quarrying and turf workers
Oibrithe gualghais agus oibrithe ceimiceacha	116	21	698	183	16.6	11.5	Coal gas and chemical workers
Oibrithe i ndéantóireacht mhíotal	456	1	9,443	9	19.2	11.1	Workers in metal manufacture
Gaibhne agus fir chéartan	288	-	2,060	-	14.0	-	Smiths and forgemen
Oibrithe eile	168	1	1,383	9	12.1	11.1	Others
Oibrithe leictreachais agus oibrithe leictreonacha	2,953	138	8,990	751	32.8	18.0	Electrical and electronic workers
Leictreoirí	1,565	-	5,164	-	30.3	-	Electricians
Oibrithe eile	1,388	135	3,826	751	36.3	18.0	Others
Meaisínearí agus feisteoirí, etc.	6,953	104	30,127	682	23.1	15.2	Machinists and fitters, etc.
Feisteoirí, cóimeálaithe agus meicneoirí	5,247	7	20,194	46	26.0	15.2	Fitters, assemblers and mechanics
Pluiméirí agus gáafheisteoirí	399	-	2,367	-	16.9	-	Plumbers and gas fitters
Oibrithe eile	1,307	97	7,566	636	17.3	15.3	Others
Oibrithe adhmaid	9,938	12	17,389	61	22.6	19.7	Woodworkers
Siúinéirí agus caibinéadairí	3,410	1	14,256	5	23.9	20.0	Carpenters and cabinet makers
Oibrithe eile	528	11	3,133	56	16.9	19.6	Others
Oibrithe Leathair	829	508	5,677	2,813	14.5	18.1	Leather workers
Gréasaithe agus caibléirí	245	1	2,006	10	12.2	10.0	Boot and shoe makers and repairers (not factory)
Déantóirí agus deisitheoirí bróg (i monarcha)	378	452	2,350	2,372	16.1	19.1	Boot and shoe makers (factory)
Oibrithe eile	200	55	1,321	431	15.1	12.8	Others
Oibrithe teicstíleacha	1,237	1,884	5,259	8,579	29.5	22.0	Textile workers
Cniotálaíthe, oibritheoirí meaisíní cniotála agus goiséireachta	165	664	766	2,294	21.5	28.9	Knitters, knitting and hosiery machine operatives
Oibrithe eile	1,072	1,220	4,487	6,285	23.9	19.4	Others

TÁBLA 7 (ar lean.): - Gaeilgeoirí arna n-aicmiú de réir slí bheatha.

TABLE 7 (contd.): - Irish speakers classified by occupational group.

Slí Bheatha	Gaeilgeoirí		An tIomlán sa ghrúpa slí bheatha		Gaeilgeoirí mar cheatadán den iomlán		Occupational group
	Irish speakers		Total in occupational group		Irish speakers as percentage of total		
	Fir	Mná	Fir	Mná	Fir	Mná	
<b>Déantóirí earraí teicstíleacha</b>	<b>756</b>	<b>2,461</b>	<b>4,827</b>	<b>16,280</b>	<b>15.7</b>	<b>15.1</b>	<b>Makers of textile goods and articles</b>
Gínadóirí	-	416	3	2,218	-	18.8	Dressmakers
Táilliúirí, tástálaithe agus gearrthóirí (láimhe)	380	252	2,521	1,654	15.1	15.2	Tailors, fitters and cutters (hand)
Fuálaithe, bróidneoirí agus meaisíneoirí	57	1,469	294	10,471	19.4	14.0	Sewers, embroiderers and machinists
Oibrithe eile	319	324	2,009	1,937	15.9	16.7	Others
<b>Déantóirí bia, deochanna agus tobac</b>	<b>1,928</b>	<b>866</b>	<b>10,654</b>	<b>4,701</b>	<b>18.1</b>	<b>18.4</b>	<b>Makers of food, drink and tobacco</b>
Báicéirí, cócairí pastaetha agus déantóirí brioscaí	626	358	3,466	1,394	18.1	25.7	Bakers, pastrycooks and biscuit makers
Déantóirí eile bia	1,087	440	5,917	2,794	18.4	15.7	Other makers of food
Oibrithe eile	215	68	1,271	513	16.9	13.3	Others
<b>Oibrithe pálpéir agus clódóireachta</b>	<b>1,299</b>	<b>688</b>	<b>5,090</b>	<b>3,480</b>	<b>25.8</b>	<b>16.0</b>	<b>Paper and printing workers</b>
<b>Oibrithe tógála agus foirgníochta</b>	<b>8,058</b>	<b>1</b>	<b>49,191</b>	<b>4</b>	<b>16.4</b>	<b>25.0</b>	<b>Building and construction workers</b>
Bríceadóirí	208	-	1,335	-	15.6	-	Bricklayers
Saoir chloiche agus gearrthóirí cloch	354	-	1,940	-	18.2	-	Masons and stone cutters
Pláistéirí	508	-	2,830	-	18.0	-	Plasterers
Ceardaithe eile	850	1	4,109	4	20.7	25.0	Other tradesmen
Sclábhaithe tógála, etc.	2,198	-	14,996	-	14.7	-	Builders', etc. labourers
Sclábhaithe conraitheoirí agus sclábhaithe bóthair	3,940	-	23,980	-	16.4	-	Contractors' labourers and road labourers
<b>Peintóirí agus maisitheoirí</b>	<b>884</b>	<b>26</b>	<b>6,503</b>	<b>259</b>	<b>13.6</b>	<b>9.9</b>	<b>Painters and decorators</b>
<b>Saoletí agus maoir</b>	<b>1,528</b>	<b>125</b>	<b>7,170</b>	<b>799</b>	<b>21.3</b>	<b>15.6</b>	<b>Foremen and supervisors</b>
<b>Tairgeoirí, déantóirí agus deilthoírí eile</b>	<b>1,855</b>	<b>410</b>	<b>7,963</b>	<b>2,086</b>	<b>23.3</b>	<b>19.7</b>	<b>Other producers, makers and repairers</b>
<b>Oibritheoirí crann tógála, inneall seasmhach agus tochtóirí</b>	<b>803</b>	<b>-</b>	<b>4,734</b>	<b>-</b>	<b>17.0</b>	<b>-</b>	<b>Operators of cranes, stationary engines and excavators</b>
<b>Sclábhaithe agus oibrithe neamholta (eile)</b>	<b>6,512</b>	<b>766</b>	<b>48,338</b>	<b>2,998</b>	<b>13.5</b>	<b>25.6</b>	<b>Labourers and unskilled workers (n.e.s.)</b>
<b>Oibrithe iompair agus cumarsáide</b>	<b>10,396</b>	<b>1,329</b>	<b>54,509</b>	<b>2,158</b>	<b>19.1</b>	<b>61.6</b>	<b>Transport and communication workers</b>
Oibrithe iompair d'uisce	545	-	7,184	-	7.6	-	Water transport workers
Sclábhaithe duga	200	-	4,179	-	4.8	-	Dock labourers
Oibrithe eile	345	-	3,005	-	11.5	-	Others
Oibrithe iarnróid	847	16	4,498	109	18.8	14.7	Railway workers

TÁBLA 7 (ar lean.): - Gaeilgeoirí arna n-aicmiú de réir slí bheatha.

TABLE 7 (contd.): - Irish speakers classified by occupational group.

Slí Bheatha	Gaeilgeoirí		An tIomlán sa ghrúpa slíe beatha		Gaeilgeoirí mar chéatadan den iomlán		Occupational group
	Irish speakers		Total in occupational group		Irish speakers as percentage of total		
	Fir	Mná	Fir	Mná	Fir	Mná	
<b>Oibríthe iompair agus cumarsáide (ar lean.)</b>							<b>Transport and communication workers (contd.)</b>
Oibríthe iompair de bhothar	5,148	28	29,418	83	17.5	33.7	Road transport workers
Tiománaithe bus	393	-	2,359	-	16.7	-	Drivers of buses
Tiománaithe feithiclí bóthair eile do phaisnéirí	467	3	2,779	18	16.8	16.7	Drivers of other road passenger vehicles
Tiománaithe feithiclí bóthair féinghluaite d'earraí	2,934	2	17,263	22	17.0	9.1	Drivers of self-propelled road goods vehicles
Stúirthóirí bus	655	23	2,301	41	28.5	56.1	Bus conductors
Cúntóirí do thiománaithe leoraí	550	-	3,478	1	15.8	-	Lorry drivers' helpers
Oibríthe eile	149	-	1,238	1	12.0	-	Others
Oibríthe aer iompair	156	1	418	3	37.3	33.3	Air transport workers
Oibríthe eile iompair agus cumarsáide	3,700	1,284	12,991	1,963	28.5	65.4	Other transport and communication workers
Fir phoist agus sórtálaithe poist	2,388	-	6,178	-	38.7	-	Postmen and post office sorters
Teachtairí	896	17	5,882	84	15.2	20.2	Messengers
Oibríthe eile	416	1,267	931	1,879	44.7	67.4	Others
<b>Stórasóirí, stórchoiméadaithe, pacálaithe agus buldeálaithe</b>	<b>2,313</b>	<b>1,097</b>	<b>11,836</b>	<b>8,576</b>	<b>20.1</b>	<b>12.8</b>	<b>Warehousemen, storekeepers, packers and bottlers</b>
<b>Cléirigh agus clóscríobhaithe</b>	<b>15,336</b>	<b>22,827</b>	<b>91,642</b>	<b>46,284</b>	<b>48.8</b>	<b>49.3</b>	<b>Clerks and typists</b>
<b>Slíe beatha sa tráchtáil, san árachas agus san airgeadais</b>	<b>16,963</b>	<b>11,698</b>	<b>65,898</b>	<b>38,701</b>	<b>28.7</b>	<b>30.2</b>	<b>Commerce, insurance and finance occupations</b>
Dílseánaigh agus bainisteoirí	4,514	2,046	21,761	10,285	20.7	19.9	Proprietors and managers
Tábhairneoirí	814	296	3,533	1,715	23.0	17.3	Publicans
Cúntóirí siopa	6,198	8,720	19,212	24,670	32.3	35.3	Shop assistants
Fir agus mná tábhairne	1,238	557	4,203	1,567	29.5	35.5	Barmen and barmaids
Reiceadóirí taistil	635	2	3,168	10	20.0	20.0	Roundsmen
Dílseánaigh gharáiste	239	7	1,225	34	19.5	20.6	Garage proprietors
Taistealaithe tráchtála	1,820	21	6,954	117	26.2	17.9	Commercial travellers
Gníomhairí árachais	1,044	23	3,079	73	33.9	31.5	Insurance agents
Oibríthe eile	461	23	2,763	230	16.7	10.0	Others
<b>Oibríthe seirbhíse</b>	<b>6,777</b>	<b>19,154</b>	<b>22,440</b>	<b>60,873</b>	<b>30.2</b>	<b>21.6</b>	<b>Service workers</b>
Sáirsintí agus Gardaí Síochána	4,022	29	6,378	31	63.1	93.5	Garda sergeants and lower ranks
Mná tí agus mátrúin scoile, etc.	8	1,018	87	5,985	9.2	17.0	Housekeepers and matrons of schools, etc.
Dílseánaigh agus bainisteoirí óstlainne proinntí, etc.	230	562	1,268	2,624	18.1	21.4	Proprietors and managers of hotels, restaurants, etc.
Fir agus mná freastail	318	1,299	1,372	4,800	23.2	27.1	Waiters and waitresses
Cócairí, cailíní aimsire agus oibríthe dá leithéidí	554	8,087	2,567	35,171	21.6	23.0	Cooks, maids and related workers
Mná glantacháin agus glantóirí oifige	63	115	829	3,300	7.6	3.5	Charwomen and office cleaners

TÁBLA 7 (ar lean.): - Gaeilgeoirí arna n-aicmiú de réir slí bheatha.

TABLE 7 (contd.): - Irish speakers classified by occupational group.

Slí Bheatha	Gaeilgeoirí		An tIomlán sa ghrúpa slí bheatha		Gaeilgeoirí mar chéatadán den iomlán		Occupational group
	Irish speakers		Total in occupational group		Irish speakers as percentage of total		
	Fir	Mná	Fir	Mná	Fir	Mná	
<b>Oibríthe seirbhíse (ar lean)</b>							<b>Service workers (contd.)</b>
Bearbóirí agus gruagairí	221	1,214	1,566	3,409	14.1	35.6	Barbers and hairdressers
Oibríthe neachtlainne, tirimhiantoirí agus smúdálaithe	132	441	995	3,785	13.3	11.7	Laundry workers, dry cleaners and pressers
Oibríthe eile	1,229	389	7,378	1,768	16.7	22.0	Others
<b>Oibríthe siamsaíochta agus spóirt</b>	<b>478</b>	<b>870</b>	<b>9,038</b>	<b>1,614</b>	<b>15.6</b>	<b>35.9</b>	<b>Entertainment and sport workers</b>
<b>Oibríthe riaracháin, feidhmiúcháin agus bainisteoirí</b>	<b>9,898</b>	<b>219</b>	<b>12,439</b>	<b>941</b>	<b>28.4</b>	<b>23.3</b>	<b>Administrative, executive and managerial workers</b>
Ardoifigigh sa státseirbhís agus ag údarais áitiúla	1,342	71	1,970	109	68.1	65.1	Senior officials-civil service and local authority
Stiúrthóirí, bainisteoirí agus rúnaithe cuideachtaí	2,193	148	10,469	832	20.9	17.8	Directors, managers and company secretaries
<b>Oibríthe gairmiúla agus teicniúla</b>	<b>20,655</b>	<b>26,911</b>	<b>97,658</b>	<b>41,176</b>	<b>54.8</b>	<b>69.9</b>	<b>Professional and technical</b>
Dochtúirí, mainleá agus fiacloirí	1,119	243	2,972	547	37.7	44.4	Physicians, surgeons and dentists
Banaltraí, mná cabhartha agus foghlaimoirí altranaís	1,059	6,995	2,170	13,060	48.8	53.6	Nurses, midwives and probationers
Poitigéirí agus íoclannóirí	517	247	1,181	473	43.8	52.2	Pharmacists and dispensers
Múinteoirí	6,034	9,651	7,026	11,261	85.9	85.7	Teachers
Innealtóirí, suirbhéirí agus ailtirí	1,609	6	3,763	31	42.8	19.4	Engineers, surveyors and architects
Pearsana eaglaise agus mná rialta:							Professed clergymen and nuns:
Caitliceach	3,570	8,066	5,595	13,259	63.8	60.8	Catholic
Creidimh eile	47	-	725	48	6.5	-	Others
Gairmeacha crábhaidh eile	1,617	5	2,298	85	70.4	5.9	Other religious occupations
Oibríthe gairmiúla agus teicniúla eile	5,083	1,098	11,928	2,412	42.6	45.5	Others
<b>Fórsaí cosanta</b>	<b>9,204</b>	<b>4</b>	<b>8,513</b>	<b>14</b>	<b>97.6</b>	<b>28.6</b>	<b>Defence forces</b>
<b>Slí bheatha shochrach eile, ach gan í a bheith luaithe</b>	<b>249</b>	<b>103</b>	<b>1,039</b>	<b>447</b>	<b>29.5</b>	<b>23.0</b>	<b>Gainfully occupied, but occupation not stated</b>
<b>AN LÍON IOMLÁN I SLÍ BHEATHA SHOCHRACH (14 bliana d'aois agus os a chionn)</b>	<b>196,398</b>	<b>94,229</b>	<b>821,829</b>	<b>286,879</b>	<b>29.9</b>	<b>32.9</b>	<b>TOTAL GAINFULLY OCCUPIED (aged 14 years and over)</b>
<b>AN LÍON IOMLÁN GAN SLÍ BHEATHA SHOCHRACH (14 bliana d'aois agus os a chionn)</b>	<b>56,805</b>	<b>162,955</b>	<b>178,961</b>	<b>714,516</b>	<b>32.9</b>	<b>22.7</b>	<b>TOTAL NOT GAINFULLY OCCUPIED (aged 14 years and over)</b>
Ar scoil nó ina ndaltaí léinn	42,225	42,510	59,398	57,054	71.1	74.5	At school or students
Ag gabháil do dhualgais tí	290	110,539	1,399	601,392	20.7	18.4	Engaged in home duties
Ar scor	7,325	2,679	78,480	17,034	9.3	15.7	Retired
Daoine eile	6,965	6,627	36,684	39,036	19.0	17.0	Others
<b>AN tIOMLÁN 14 BLIANA D'AOIS AGUS OS A CHIONN</b>	<b>253,203</b>	<b>256,878</b>	<b>997,490</b>	<b>1,001,095</b>	<b>28.5</b>	<b>25.6</b>	<b>TOTAL 14 YEARS OF AGE AND OVER</b>

TÁBLA 8:- DAONRA IOMLÁN (GACH AOIS) 'SNA LIMISTÉIR FHÍOR-GHAELTACHTA AGUS BHREAC-GHAELTACHTA, MAR A MHÍNITEAR IAD SIN I DTUARASCÁIL CHOIMISIÚN NA GAELTACHTA, 1926, I NGACH DAONÁIREAMH-1926 GO 1961.

TABLE 8:- TOTAL POPULATION (ALL AGES) IN FÍOR-GHAELTACHT AND BREAC-GHAELTACHT AREAS, AS DEFINED IN THE GAELTACHT COMMISSION REPORT, 1926, AT EACH CENSUS-1926 TO 1961.

Contae (County)		1926	1936	1946	1951	1956	1961
IOMLÁN NA GAELTACHTA (TOTAL GAELTACHT AREAS)	{ An tIomlán	479,991	452,392	426,013	404,164	367,279	366,154
	{ Fíor-Ghaeltacht	168,279	156,097	146,813	139,363	131,663	122,288
	{ Breac-Ghaeltacht	311,112	296,385	279,800	264,821	235,616	243,866
Contae an Chláir (Co. Clare)	{ An tIomlán	45,942	44,191	41,198	35,433	36,365	34,278
	{ Fíor-Ghaeltacht	3,434	3,252	2,934	2,699	2,497	2,451
	{ Breac-Ghaeltacht	42,508	40,939	38,264	32,734	33,868	31,827
Contae Chorcaí (Co. Cork)	{ An tIomlán	54,615	49,453	45,365	43,089	41,187	38,988
	{ Fíor-Ghaeltacht	7,825	7,062	6,269	5,812	5,508	5,165
	{ Breac-Ghaeltacht	46,790	42,391	39,096	37,277	35,679	33,823
Contae Dhún na nGail (Co. Donegal)	{ An tIomlán	71,181	65,138	59,534	56,079	51,768	47,850
	{ Fíor-Ghaeltacht	48,874	44,974	41,119	38,653	35,527	32,700
	{ Breac-Ghaeltacht	22,307	20,164	18,415	17,426	16,241	15,150
Contae na Gaillimhe (Co. Galway)	{ An tIomlán	110,782	111,476	111,080	107,942	104,896	101,115
	{ Fíor-Ghaeltacht	51,660	49,386	48,395	46,380	45,419	42,854
	{ Breac-Ghaeltacht	59,122	62,090	62,685	61,562	59,477	58,261
Contae Chiarraí (Co. Kerry)	{ An tIomlán	70,233	63,092	58,530	54,798	52,077	49,858
	{ Fíor-Ghaeltacht	25,384	21,644	19,292	17,520	16,265	15,184
	{ Breac-Ghaeltacht	44,849	41,448	39,238	37,278	35,812	34,674
Contae Mhaigh Eo (Co. Mayo)	{ An tIomlán	90,301	84,935	78,389	75,780	71,018	65,563
	{ Fíor-Ghaeltacht	24,723	23,872	23,137	23,186	21,382	19,265
	{ Breac-Ghaeltacht	65,578	61,063	55,252	52,594	49,636	46,298
Contae Shligigh (Co. Sligo)	{ An tIomlán	1,954	1,740	1,443	1,329	1,206	1,075
	{ Fíor-Ghaeltacht	-	-	-	-	-	-
	{ Breac-Ghaeltacht	1,954	1,740	1,443	1,329	1,206	1,075
Contae Thiobraid Árann, An Trian Theas (Co. Tipperary, S.R.)	{ An tIomlán	1,251	1,114	970	914	806	769
	{ Fíor-Ghaeltacht	-	-	-	-	-	-
	{ Breac-Ghaeltacht	1,251	1,114	970	914	806	769
Contae Phort Láirge (Co. Waterford)	{ An tIomlán	33,132	31,253	29,504	28,820	27,956	26,658
	{ Fíor-Ghaeltacht	6,379	5,847	5,367	5,113	5,065	4,669
	{ Breac-Ghaeltacht	26,753	25,406	24,137	23,707	22,891	21,989

TÁBLA 9:- GAEILGEOIRÍ AGUS NEAMH-GHAELGEOIRÍ, 3 BLIANA D'AOIS AGUS OS A CHIONN, 'SNA LIMISTÉIR FHÍOR-GHAELTACHTA AGUS BHREAC-GHAELTACHTA, MAR A NHÍNÍTEAR IAD SIN I DTUARASCÁIL CHOIMISIÚN NA GAELTACHTA, 1925, I NGACH CONTAE-1936, 1946 AGUS 1961.

TABLE 9:- IRISH SPEAKERS AND NON-IRISH SPEAKERS, 3 YEARS OF AGE AND OVER, IN THE FÍOR-GHAELTACHT AND BREAC-GHAELTACHT AREAS, AS DEFINED IN THE GAELTACHT COMMISSION REPORT, 1925, IN EACH COUNTY-1936, 1946 AND 1961.

Contae County	Gaeilgeoirí Irish speakers	Neamh-Ghaeilgeoirí Non-Irish speakers			Gaeilgeoirí mar chéatadán den iomlán  Irish speakers as percentage of total					
		1936	1946	1961	1936	1946	1961	1936	1946	1961
IOMLÁN NA GAELTACHTA (TOTAL GAELTACHT AREAS)	{ An tIOMLÁN	239,737	193,574	164,229	189,675	206,915	181,375	85.8	48.3	47.5
	{ FÍOR-GHAELTACHT	123,125	104,449	83,148	28,054	32,460	32,444	89.1	76.3	71.9
	{ BREAC-GHAELTACHT	116,612	89,125	81,084	164,621	174,455	148,931	41.5	33.8	35.9
Contae an Chláir (Co. Clare)	{ An tIomlán	17,124	11,978	10,184	24,766	26,789	22,183	40.9	30.9	31.5
	{ Fíor-Ghaeltacht	2,271	1,454	815	819	1,302	1,497	73.5	52.8	35.3
	{ Breac-Ghaeltacht	14,853	10,524	9,369	23,947	25,487	20,686	38.3	29.2	31.2
Contae Chorcaí (Co. Cork)	{ An tIomlán	20,570	15,101	13,917	26,713	27,994	23,008	43.5	35.0	37.7
	{ Fíor-Ghaeltacht	5,601	4,609	3,713	1,149	1,353	1,169	83.0	77.3	76.1
	{ Breac-Ghaeltacht	14,969	10,492	10,204	25,564	26,641	21,839	36.9	28.3	31.8
Contae Dhún na nGall (Co. Donegal)	{ An tIomlán	43,946	36,462	28,415	18,183	19,583	16,941	70.7	65.1	62.6
	{ Fíor-Ghaeltacht	36,707	31,137	24,240	6,218	7,575	6,781	85.5	80.4	78.1
	{ Breac-Ghaeltacht	7,239	5,325	4,175	11,965	12,008	10,160	37.7	30.7	29.1
Contae na Gaillimhe (Co. Galway)	{ An tIomlán	67,276	60,472	52,428	37,528	43,222	42,476	64.2	58.3	55.2
	{ Fíor-Ghaeltacht	39,207	35,386	29,745	7,388	9,630	10,579	84.1	78.6	73.8
	{ Breac-Ghaeltacht	28,069	25,086	22,683	30,140	33,592	31,897	48.2	42.8	41.6
Contae Chiarraí (Co. Kerry)	{ An tIomlán	35,024	27,021	22,083	25,231	28,362	25,191	58.1	48.8	46.7
	{ Fíor-Ghaeltacht	17,041	13,323	9,722	3,711	4,653	4,690	82.1	74.1	67.5
	{ Breac-Ghaeltacht	17,983	13,698	12,361	21,520	23,709	20,501	45.5	36.6	37.6
Contae Mhaigh Eo (Co. Mayo)	{ An tIomlán	43,287	33,662	28,289	37,262	39,765	33,645	53.7	45.8	45.7
	{ Fíor-Ghaeltacht	18,493	15,764	12,582	3,946	5,622	5,627	82.4	73.7	69.1
	{ Breac-Ghaeltacht	24,794	17,898	15,707	33,316	34,143	28,018	42.7	34.4	35.9
Contae Shligigh (Co. Sligo)	{ An tIomlán	755	211	249	908	1,147	773	45.4	15.5	24.4
	{ Fíor-Ghaeltacht	-	-	-	-	-	-	-	-	-
	{ Breac-Ghaeltacht	755	211	249	908	1,147	773	45.4	15.5	24.4
Contae Thiobraid Árann, An Trian Theas (Co. Tipperary, S.R.)	{ An tIomlán	644	400	243	420	529	486	60.5	43.1	33.3
	{ Fíor-Ghaeltacht	-	-	-	-	-	-	-	-	-
	{ Breac-Ghaeltacht	644	400	243	420	529	486	60.5	43.1	33.3
Contae Phort Láirge (Co. Waterford)	{ An tIomlán	11,111	8,267	8,421	18,664	19,524	16,672	37.3	29.7	33.6
	{ Fíor-Ghaeltacht	3,805	2,776	2,328	1,823	2,325	2,101	67.6	54.4	52.6
	{ Breac-Ghaeltacht	7,306	5,491	6,093	16,841	17,199	14,571	30.3	24.2	29.5

TÁBLA 10:- DAONRA IOMLÁN (GACH AOIS) I 1956 AGUS I 1961, NA CODA DE GACH CONTAE A ÁIRITEAR MAR LIMISTÉAR GAELTACHTA IN ORDÚ NA LIMISTÉIRÍ GAELTACHTA, 1956.

TABLE 10:- TOTAL POPULATION (ALL AGES) IN 1956 AND 1961 OF THE PORTION OF EACH COUNTY DESIGNATED AS A GAELTACHT AREA IN THE GAELTACHT AREAS ORDER, 1956.

Contae	Daoine Persons		Fireannaigh Males		Baineannaigh Females		County
	1956	1961	1956	1961	1956	1961	
An tIomlán	85,703	78,528	45,225	41,872	40,478	37,052	Total
Corcaigh	3,697	3,487	1,976	1,873	1,721	1,614	Cork
Dún na nGall	28,878	26,357	15,096	13,783	13,782	12,574	Donegal
Gaillimh	24,584	22,877	13,281	12,323	11,303	10,554	Galway
Ciarraí	9,367	8,736	5,009	4,749	4,358	3,987	Kerry
Maigh Eo	18,229	16,275	9,354	8,335	8,875	7,940	Mayo
Port Láirge	948	792	509	409	439	383	Waterford

TÁBLA 11:- GAEILGEOIRÍ AGUS NEAMH-GHAEILGEOIRÍ, 9 BLIANA D'AOIS AGUS OS A CHIONN, I 1961, SA CHUID DE GACH CONTAE A ÁIRITEAR INA LIMISTÉAR GAELTACHTA IN ORDÚ NA LIMISTÉIRÍ GAELTACHTA, 1956.

TABLE 11:- IRISH SPEAKERS AND NON-IRISH SPEAKERS, 9 YEARS OF AGE AND OVER, IN 1961, IN THE PORTION OF EACH COUNTY DESIGNATED AS A GAELTACHT AREA IN THE GAELTACHT AREAS ORDER, 1956.

Contae	Daoine Persons			Fireannaigh Males			Baineannaigh Females			County
	Gaeil- geoirí	Neamh- Ghaeil- geoirí	Gaeil- geoirí mar chéa- tadán den iomlán	Gaeil- geoirí	Neamh- Ghaeil- geoirí	Gaeil- geoirí mar chéa- tadán den iomlán	Gaeil- geoirí	Neamh- Ghaeil- geoirí	Gaeil- geoirí mar chéa- tadán den iomlán	
	Irish speakers	Non- Irish speakers	Irish speakers as percent- age of total	Irish speakers	Non- Irish speakers	Irish speakers as percent- age of total	Irish speakers	Non- Irish speakers	Irish speakers as percent- age of total	
AN TIOMLÁN	64,275	9,986	86.6	34,204	8,087	87.1	30,071	4,899	86.0	Total
Corcaigh	2,789	497	84.9	1,512	252	85.7	1,277	245	83.9	Cork
Dún na nGall	22,096	2,946	88.2	11,607	1,531	88.3	10,489	1,415	88.1	Donegal
Gaillimh	19,895	1,608	92.5	10,815	794	93.2	9,080	814	91.8	Galway
Ciarraí	7,207	1,108	86.7	3,950	574	87.3	3,257	534	85.9	Kerry
Maigh Eo	11,599	3,778	75.4	5,949	1,919	75.6	5,650	1,859	75.2	Mayo
Port Láirge	689	49	93.4	371	17	95.6	318	32	90.9	Waterford

27  
 TABLA 12A:- GAEILGEOIRÍ AGUS NEAMH-GHAEILGEOIRÍ, 3 BLIANA D'AOIS AGUS OS A CHIONN, ARNA N-AÍCHMIÚ DE RÉIR AOISGHRÚPAÍ, SA CHUID DE GACH CONTAE A AÍRÍTEAR INA LIMISTÉAR GAELTACHTA IN ORDU NA LIMISTÉIRÍ GAELTACHTA, 1956.

TABLE 12A:- IRISH SPEAKERS AND NON-IRISH SPEAKERS, 3 YEARS OF AGE AND OVER, CLASSIFIED BY AGE GROUP, IN THE PORTION OF EACH COUNTY DESIGNATED AS A GAELTACHT AREA IN THE GAELTACHT AREAS ORDER, 1956.

Contae	An tIomlán Total	Aoisghrúpa - Age group										County
		3-4	5-9	10-14	15-19	20-24	25-34	35-44	45-54	55-64	65 agus os a chionn 65 and over	
<b>AN tIOMLÁN</b>												<b>TOTAL</b>
<b>GAEILGEOIRÍ</b>	<b>64,278</b>	<b>1,944</b>	<b>6,745</b>	<b>8,258</b>	<b>6,104</b>	<b>2,866</b>	<b>8,257</b>	<b>7,198</b>	<b>8,870</b>	<b>6,948</b>	<b>10,088</b>	<b>IRISH SPEAKERS</b>
<b>NEAMH-GHAEILGEOIRÍ</b>	<b>9,986</b>	<b>1,032</b>	<b>1,991</b>	<b>864</b>	<b>629</b>	<b>996</b>	<b>771</b>	<b>1,129</b>	<b>1,432</b>	<b>1,126</b>	<b>1,216</b>	<b>NON-IRISH SPEAKERS</b>
<b>GAEILGEOIRÍ MAR CHÉATADÁN DEN IOMLÁN</b>	<b>86.6</b>	<b>65.3</b>	<b>82.9</b>	<b>90.8</b>	<b>90.7</b>	<b>87.9</b>	<b>87.2</b>	<b>86.4</b>	<b>86.1</b>	<b>86.1</b>	<b>89.2</b>	<b>IRISH SPEAKERS AS PERCENTAGE OF TOTAL</b>
<b>Co. Chorcaí</b>												<b>Co. Cork</b>
<b>Gaeilgeoirí</b>	<b>2,789</b>	<b>88</b>	<b>270</b>	<b>269</b>	<b>253</b>	<b>156</b>	<b>278</b>	<b>363</b>	<b>371</b>	<b>312</b>	<b>429</b>	<b>Irish speakers</b>
<b>Neamh-Ghaeilgeoirí</b>	<b>497</b>	<b>40</b>	<b>27</b>	<b>21</b>	<b>11</b>	<b>11</b>	<b>33</b>	<b>58</b>	<b>98</b>	<b>91</b>	<b>107</b>	<b>Non-Irish speakers</b>
<b>Gaeilgeoirí mar chéatadán den iomlán</b>	<b>84.9</b>	<b>68.8</b>	<b>90.9</b>	<b>92.8</b>	<b>95.8</b>	<b>93.4</b>	<b>89.4</b>	<b>86.2</b>	<b>79.1</b>	<b>77.4</b>	<b>80.0</b>	<b>Irish speakers as percentage of total</b>
<b>Co. Dhún na nGall</b>												<b>Co. Donegal</b>
<b>Gaeilgeoirí</b>	<b>22,096</b>	<b>613</b>	<b>2,090</b>	<b>2,538</b>	<b>1,973</b>	<b>1,016</b>	<b>1,858</b>	<b>2,507</b>	<b>3,158</b>	<b>2,518</b>	<b>3,825</b>	<b>Irish speakers</b>
<b>Neamh-Ghaeilgeoirí</b>	<b>2,946</b>	<b>246</b>	<b>323</b>	<b>208</b>	<b>183</b>	<b>141</b>	<b>241</b>	<b>356</b>	<b>488</b>	<b>375</b>	<b>385</b>	<b>Non-Irish speakers</b>
<b>Gaeilgeoirí mar chéatadán den iomlán</b>	<b>88.2</b>	<b>71.4</b>	<b>86.6</b>	<b>92.4</b>	<b>91.5</b>	<b>87.8</b>	<b>88.5</b>	<b>87.6</b>	<b>86.6</b>	<b>87.0</b>	<b>90.9</b>	<b>Irish speakers as percentage of total</b>
<b>Co. na Gaillimhe</b>												<b>Co. Galway</b>
<b>Gaeilgeoirí</b>	<b>19,895</b>	<b>779</b>	<b>2,436</b>	<b>2,866</b>	<b>1,954</b>	<b>867</b>	<b>1,649</b>	<b>2,129</b>	<b>2,594</b>	<b>2,058</b>	<b>2,563</b>	<b>Irish speakers</b>
<b>Neamh-Ghaeilgeoirí</b>	<b>1,608</b>	<b>243</b>	<b>236</b>	<b>125</b>	<b>96</b>	<b>57</b>	<b>142</b>	<b>204</b>	<b>195</b>	<b>163</b>	<b>147</b>	<b>Non-Irish speakers</b>
<b>Gaeilgeoirí mar chéatadán den iomlán</b>	<b>92.5</b>	<b>76.2</b>	<b>91.2</b>	<b>95.8</b>	<b>95.3</b>	<b>93.8</b>	<b>92.1</b>	<b>91.3</b>	<b>93.0</b>	<b>92.7</b>	<b>94.6</b>	<b>Irish speakers as percentage of total</b>
<b>Co. Chiarraí</b>												<b>Co. Kerry</b>
<b>Gaeilgeoirí</b>	<b>7,207</b>	<b>201</b>	<b>726</b>	<b>812</b>	<b>629</b>	<b>270</b>	<b>512</b>	<b>849</b>	<b>1,172</b>	<b>855</b>	<b>1,181</b>	<b>Irish speakers</b>
<b>Neamh-Ghaeilgeoirí</b>	<b>1,108</b>	<b>103</b>	<b>124</b>	<b>56</b>	<b>37</b>	<b>22</b>	<b>87</b>	<b>122</b>	<b>202</b>	<b>165</b>	<b>190</b>	<b>Non-Irish speakers</b>
<b>Gaeilgeoirí mar chéatadán den iomlán</b>	<b>86.7</b>	<b>66.1</b>	<b>85.4</b>	<b>93.5</b>	<b>94.4</b>	<b>92.5</b>	<b>85.5</b>	<b>87.4</b>	<b>85.3</b>	<b>83.8</b>	<b>86.1</b>	<b>Irish speakers as percentage of total</b>
<b>Co. Mhaigh Eo</b>												<b>Co. Mayo</b>
<b>Gaeilgeoirí</b>	<b>11,599</b>	<b>243</b>	<b>1,158</b>	<b>1,705</b>	<b>1,243</b>	<b>506</b>	<b>903</b>	<b>1,268</b>	<b>1,484</b>	<b>1,111</b>	<b>1,978</b>	<b>Irish speakers</b>
<b>Neamh-Ghaeilgeoirí</b>	<b>3,778</b>	<b>392</b>	<b>676</b>	<b>453</b>	<b>300</b>	<b>161</b>	<b>265</b>	<b>385</b>	<b>442</b>	<b>323</b>	<b>381</b>	<b>Non-Irish speakers</b>
<b>Gaeilgeoirí mar chéatadán den iomlán</b>	<b>75.4</b>	<b>38.3</b>	<b>63.1</b>	<b>79.0</b>	<b>80.6</b>	<b>75.9</b>	<b>77.3</b>	<b>76.7</b>	<b>77.1</b>	<b>77.5</b>	<b>83.8</b>	<b>Irish speakers as percentage of total</b>
<b>Co. Phort Láirge</b>												<b>Co. Waterford</b>
<b>Gaeilgeoirí</b>	<b>689</b>	<b>20</b>	<b>65</b>	<b>65</b>	<b>52</b>	<b>51</b>	<b>57</b>	<b>82</b>	<b>91</b>	<b>94</b>	<b>112</b>	<b>Irish speakers</b>
<b>Neamh-Ghaeilgeoirí</b>	<b>49</b>	<b>8</b>	<b>5</b>	<b>1</b>	<b>2</b>	<b>4</b>	<b>3</b>	<b>4</b>	<b>7</b>	<b>9</b>	<b>6</b>	<b>Non-Irish speakers</b>
<b>Gaeilgeoirí mar chéatadán den iomlán</b>	<b>93.4</b>	<b>71.4</b>	<b>92.9</b>	<b>98.5</b>	<b>96.3</b>	<b>92.7</b>	<b>95.0</b>	<b>95.3</b>	<b>92.9</b>	<b>91.3</b>	<b>94.9</b>	<b>Irish speakers as percentage of total</b>

TÁBLA 12B:- FIREANNAIGH, GAEILGEOIRÍ AGUS NEAMH-GHAEILGEOIRÍ, 3 BLIANA D'AOIS AGUS OS A CHIONN, ARNA N-AICMIÚ DE REIR AOISGHRÚPAÍ, SA CHUID DE GACH CONTAE A ÁIRÍTEAR INA LIMISTÉAR GAELTACHTA IN ORDÚ NA LIMISTEIRÍ GAELTACHTA, 1956.

TABLE 12B:- MALES, IRISH SPEAKERS AND NON-IRISH SPEAKERS, 3 YEARS OF AGE AND OVER, CLASSIFIED BY AGE GROUP, IN THE PORTION OF EACH COUNTY DESIGNATED AS A GAELTACHT AREA IN THE GAELTACHT AREAS ORDER, 1956.

Contae	An tIomlán Total	Aoisghrúpa - Age group										County
		3-4	5-9	10-14	15-19	20-24	25-34	35-44	45-54	55-64	65 agus os a chionn 65 and over	
<b>AN TIOMLAN</b>												<b>TOTAL</b>
<b>GAEILGEOIRÍ</b>	<b>34,204</b>	<b>987</b>	<b>3,458</b>	<b>4,310</b>	<b>3,367</b>	<b>1,688</b>	<b>2,841</b>	<b>3,647</b>	<b>4,885</b>	<b>3,766</b>	<b>5,255</b>	<b>IRISH SPEAKERS</b>
<b>NEAMH-GHAEILGEOIRÍ</b>	<b>5,087</b>	<b>538</b>	<b>790</b>	<b>459</b>	<b>362</b>	<b>214</b>	<b>373</b>	<b>552</b>	<b>762</b>	<b>565</b>	<b>532</b>	<b>NON-IRISH SPEAKERS</b>
<b>GAEILGEOIRÍ MAR CHÉATADÁN DEN IOMLÁN</b>	<b>87.1</b>	<b>64.7</b>	<b>82.6</b>	<b>90.4</b>	<b>90.3</b>	<b>88.7</b>	<b>88.4</b>	<b>86.9</b>	<b>86.8</b>	<b>87.0</b>	<b>90.8</b>	<b>IRISH SPEAKERS AS PERCENTAGE OF TOTAL</b>
<b>Co. Chorcaí</b>												<b>Co. Cork</b>
Gaeilgeoirí	1,512	48	139	147	130	82	160	192	206	170	238	Irish speakers
Neamh-Ghaeilgeoirí	252	24	15	9	9	5	19	25	60	46	40	Non-Irish speakers
Gaeilgeoirí mar chéatadán den iomlán	85.7	66.7	90.3	94.2	93.5	94.3	89.4	88.5	77.4	78.7	85.6	Irish speakers as percentage of total
<b>Co. Dhún na nGall</b>												<b>Co. Donegal</b>
Gaeilgeoirí	11,607	306	1,090	1,327	1,084	587	1,019	1,293	1,681	1,305	1,915	Irish speakers
Neamh-Ghaeilgeoirí	1,531	136	176	110	94	81	116	169	264	195	190	Non-Irish speakers
Gaeilgeoirí mar chéatadán den iomlán	88.3	69.2	86.1	92.3	92.0	87.9	89.8	88.4	86.4	87.0	91.0	Irish speakers as percentage of total
<b>Co. na Gaillimhe</b>												<b>Co. Galway</b>
Gaeilgeoirí	10,815	387	1,250	1,507	1,119	534	873	1,094	1,465	1,165	1,421	Irish speakers
Neamh-Ghaeilgeoirí	794	123	122	59	60	27	60	98	104	79	62	Non-Irish speakers
Gaeilgeoirí mar chéatadán den iomlán	93.2	75.9	91.1	96.2	94.9	95.2	93.6	91.8	93.4	93.6	95.8	Irish speakers as percentage of total
<b>Co. Chiarraí</b>												<b>Co. Kerry</b>
Gaeilgeoirí	3,950	106	368	409	347	172	281	449	694	480	644	Irish speakers
Neamh-Ghaeilgeoirí	574	57	68	35	23	10	47	63	106	90	75	Non-Irish speakers
Gaeilgeoirí mar chéatadán den iomlán	87.3	65.0	84.4	92.1	93.8	94.5	85.7	87.7	86.8	84.2	89.6	Irish speakers as percentage of total
<b>Co. Mhaigh Eo</b>												<b>Co. Mayo</b>
Gaeilgeoirí	5,949	127	584	887	665	281	480	574	788	592	971	Irish speakers
Neamh-Ghaeilgeoirí	1,919	195	344	246	176	89	131	197	225	153	163	Non-Irish speakers
Gaeilgeoirí mar chéatadán den iomlán	75.6	39.4	62.9	78.3	79.1	75.9	78.6	74.4	77.8	79.5	85.6	Irish speakers as percentage of total
<b>Co. Phort Láirge</b>												<b>Co. Waterford</b>
Gaeilgeoirí	371	13	27	33	22	32	28	45	51	54	66	Irish speakers
Neamh-Ghaeilgeoirí	17	3	5	-	-	2	-	-	3	2	2	Non-Irish speakers
Gaeilgeoirí mar chéatadán den iomlán	95.6	81.3	84.4	100.0	100.0	94.1	100.0	100.0	94.4	96.4	97.1	Irish speakers as percentage of total

TÁBLA 12C:- BAINNEANNAIGH, GAEILGEOIRÍ AGUS NEAMH-GHAEILGEOIRÍ, 3 BLIANA D'AOIS AGUS OS A CHIONN, ARNA N-AICMIÚ DE RÉIR AOISGHRÚPAÍ, SA CHUID DE GACH CONTAE A ÁIRÍTEAR INA LIMISTEAR GAELTACHTA IN ORDU NA LIMISTEIRÍ GAELTACHTA, 1986.

TABLE 12C:- FEMALES, IRISH SPEAKERS AND NON-IRISH SPEAKERS, 3 YEARS OF AGE AND OVER CLASSIFIED BY AGE GROUP, IN THE PORTION OF EACH COUNTY DESIGNATED AS A GAELTACHT AREA IN THE GAELTACHT AREAS ORDER, 1986.

Contae	An tIomlán Total	Aoisghrúpa - Age group										County
		3-4	5-9	10-14	15-19	20-24	25-34	35-44	45-54	55-64	65 agus os a chionn 65 and over	
<b>AN tIOMLÁN</b>												<b>TOTAL</b>
GAEILGEOIRÍ	30,071	957	3,287	3,948	2,737	1,178	2,416	3,551	3,985	3,182	4,833	IRISH SPEAKERS
NEAMH-GHAEILGEOIRÍ	4,899	494	661	408	267	182	398	577	670	561	684	NON-IRISH SPEAKERS
GAEILGEOIRÍ MAR CHEÁTADÁN DEN IOMLÁN	86.0	66.0	83.9	90.7	91.1	86.6	85.9	86.0	88.6	85.0	87.6	IRISH SPEAKERS AS PERCENTAGE OF TOTAL
<b>Co. Chorcaí</b>												<b>Co. Cork</b>
Gaeilgeoirí	1,277	40	131	122	123	74	118	171	165	142	191	Irish speakers
Neamh-Ghaeilgeoirí	245	16	12	12	2	6	14	33	38	45	67	Non-Irish speakers
Gaeilgeoirí mar chéatadán den iomlán	83.9	71.4	91.6	91.0	98.4	92.5	89.4	83.8	81.3	75.9	74.0	Irish speakers as percentage of total
<b>Co. Dhún na nGall</b>												<b>Co. Donegal</b>
Gaeilgeoirí	10,489	307	1,000	1,211	889	429	839	1,214	1,477	1,213	1,910	Irish speakers
Neamh-Ghaeilgeoirí	1,415	110	147	98	89	60	125	187	224	180	195	Non-Irish speakers
Gaeilgeoirí mar chéatadán den iomlán	88.1	73.6	87.2	92.5	90.9	87.7	87.0	86.7	86.8	87.1	90.7	Irish speakers as percentage of total
<b>Co. na Gaillimhe</b>												<b>Co. Galway</b>
Gaeilgeoirí	9,080	392	1,186	1,359	835	333	776	1,035	1,129	893	1,142	Irish speakers
Neamh-Ghaeilgeoirí	814	120	114	66	36	30	82	106	91	84	85	Non-Irish speakers
Gaeilgeoirí mar chéatadán den iomlán	91.8	76.6	91.2	95.4	95.9	91.7	90.4	90.7	92.5	91.4	93.1	Irish speakers as percentage of total
<b>Co. Chiarraí</b>												<b>Co. Kerry</b>
Gaeilgeoirí	3,257	95	358	403	282	98	231	400	478	375	537	Irish speakers
Neamh-Ghaeilgeoirí	534	46	56	21	14	12	40	59	96	75	115	Non-Irish speakers
Gaeilgeoirí mar chéatadán den iomlán	85.9	67.4	86.5	95.0	95.3	89.1	85.2	87.1	83.3	83.3	82.4	Irish speakers as percentage of total
<b>Co. Mhaigh Eo</b>												<b>Co. Mayo</b>
Gaeilgeoirí	5,650	116	574	818	578	225	423	694	696	519	1,007	Irish speakers
Neamh-Ghaeilgeoirí	1,859	197	332	207	124	72	134	188	217	170	218	Non-Irish speakers
Gaeilgeoirí mar chéatadán den iomlán	75.2	37.1	63.4	79.8	82.3	75.8	75.9	78.7	76.2	75.3	82.2	Irish speakers as percentage of total
<b>Co. Phort Láirge</b>												<b>Co. Waterford</b>
Gaeilgeoirí	318	7	38	32	30	19	29	37	40	40	46	Irish speakers
Neamh-Ghaeilgeoirí	32	5	-	1	2	2	3	4	4	7	4	Non-Irish speakers
Gaeilgeoirí mar chéatadán den iomlán	90.9	58.3	100.0	97.0	93.8	90.5	90.6	90.2	90.9	85.1	92.0	Irish speakers as percentage of total

TABLA 19:- AN DAONRA IOMLÁN I 1956 AGUS I 1961 AGUS AN LÍON IOMLÁN DAÓINE 3 BLIANA D'AOIS AGUS OS A CHIONN I 1961, AG IDIRDHEALÚ GHAELGEOIRÍ AGUS NEAMH-GHAELGEOIRÍ, I dTOGHRANNA CEANTAIR NÓ CODA DE TOGHRANNA CEANTAIR SA GHAELTACHT MAR A MHINITEAR BIN LE HORDÚ NA LIMISTEIRÍ GAELTACHTA, 1956.

TABLE 19:- TOTAL POPULATION IN 1956 AND 1961 AND TOTAL PERSONS 3 YEARS OF AGE AND OVER IN 1961, DISTINGUISHING IRISH SPEAKERS AND NON-IRISH SPEAKERS, IN DISTRICT ELECTORAL DIVISIONS OR PARTS OF DISTRICT ELECTORAL DIVISIONS WITHIN THE GAELTACHT AS DEFINED BY THE GAELTACHT AREAS ORDER, 1956.

Toghraínn Cheantair	Daonra Iomlán		Daoine 3 bliana d'aois agus os a chionn Persons aged 3 years and over				District Electoral Division
	Total population		An tIomlán	Gaeilgeoirí	Neamh-Ghaeilgeoirí	Gaeilgeoirí mar chéatadán den iomlán	
	1956	1961	Total	Irish speakers	Non-Irish speakers	Irish speakers as percentage of total	
<b>IOMLÁN NA GAELTACHTA</b>	<b>85,703</b>	<b>78,524</b>	<b>74,261</b>	<b>64,275</b>	<b>9,986</b>	<b>86.6</b>	<b>TOTAL GAELTACHT AREAS</b>
<b>CONTAE CHORCAÍ (cuid)</b>	<b>3,697</b>	<b>3,487</b>	<b>3,286</b>	<b>2,789</b>	<b>497</b>	<b>84.9</b>	<b>CORK COUNTY (pt.)</b>
Dún Mánmhaí Tuathcheantar (cuid)	250	260	239	173	66	72.4	Dunmanway Rural District (pt.)
Toghraínn Cheantair: Beál Átha Ghaorthaidh (cuid)	250	260	239	173	66	72.4	District Electoral Division: Bealanagarry (pt.)
Magh Chromtha Tuathcheantar (cuid)	3,202	2,992	2,826	2,431	395	86.0	Macroom Rural District (pt.)
Toghraínn Cheantair: Beál Átha Ghaorthaidh (cuid)	560	571	525	476	49	90.7	District Electoral Division: Bealanageary (pt.)
Ceann Droma (cuid)	31	26	25	16	9	64.0	Candroma (pt.)
Cleanrath (cuid)	197	183	179	172	7	96.1	Cleanrath (pt.)
Doire Finghín	290	259	250	193	57	77.2	Derryfineen
Gort na Tiobhratan	528	466	452	422	30	93.4	Gortnatubbrid
Cill na Martar (cuid)	175	172	156	90	66	57.7	Kilnamartery (pt.)
Sliabh Riabhach	752	676	643	614	29	95.5	Slieveragh
Na hUláin	669	639	596	448	148	75.2	Ullanes
An Sclobairín Tuathcheantar (cuid)	245	235	221	185	36	83.7	Skibbereen Rural District (pt.)
Toghraínn Cheantair: Cléire (cuid)	245	235	221	185	36	83.7	District Electoral Division: Cape Clear (pt.)
<b>CONTAE DHÚN NA nGALL (cuid)</b>	<b>28,878</b>	<b>26,387</b>	<b>25,042</b>	<b>22,096</b>	<b>2,946</b>	<b>88.2</b>	<b>DONEGAL COUNTY (pt.)</b>
Dún na nGall Tuathcheantar (cuid)	61	47	47	42	5	89.4	Donegal Rural District (pt.)
Toghraínn Cheantair: Binn Boghaine (cuid)	53	39	39	34	5	87.2	District Electoral Division: Binbane (pt.)
Loch Iasc (cuid)	8	8	8	8	-	100.0	Lough Eask (pt.)
Dún Fionnachaidh Tuathcheantar (cuid)	8,627	7,985	7,556	7,196	360	95.2	Dunfanaghy Rural District (pt.)
Toghraínn Cheantair: Cró na Sméar (cuid)	59	49	49	33	16	67.3	District Electoral Division: Creensamear (pt.)
An Críoslach (cuid)	110	102	96	87	9	90.6	Creelough (pt.)
An Croisbhealach (cuid)	1,754	1,699	1,609	1,427	182	88.7	Cross Roads (pt.)
Caisleán na dTuatha (cuid)	84	72	71	64	7	90.1	Doe Castle (pt.)
Dún Fionnachaidh (cuid)	84	85	77	32	45	41.6	Dunfanaghy (pt.)
Dún Lúiche	857	827	775	764	11	98.6	Dunlewy
Gort an Choirce	1,779	1,641	1,561	1,537	24	98.5	Gortahork
Machaire an Chlochair	2,380	2,131	1,995	1,939	56	97.2	Magheraclogher
Mín an Chladaigh	1,520	1,379	1,323	1,313	10	99.2	Meenacлады

**TABLE 19 (ar lean):** - An daonra iomlán i 1956 agus i 1961 agus an líon iomlán daoine 3 bliana d'aois agus os a chionn i 1961, ag idirdhealú Ghaeilgeoirí agus Neamh-Ghaeilgeoirí, i dToghanna Ceantair nó coda de Toghanna Ceantair sa Ghaeltacht mar a mhínítear sin le hOrdú na Limistéirí Gaeltachta, 1956.

**TABLE 19 (contd.):** - Total population in 1956 and 1961 and total persons 3 years of age and over in 1961, distinguishing Irish speakers and non-Irish speakers, in District Electoral Divisions or parts of District Electoral Divisions within the Gaeltacht as defined by the Gaeltacht Areas Order, 1956.

Toghrainn Cheantair	Daonra Iomlán Total population		Daoine 3 bliana d'aois agus os a chionn Persons aged 3 years and over				District Electoral Division
			An tIomlán	Gaeil-geoirí	Neamh-Ghaeil-geoirí	Gaeil-geoirí mar chéatadán den iomlán	
			Total	Irish speakers	Non-Irish speakers	Irish speakers as percentage of total	
	1956	1961				%	
<b>CONTAE DHÚN NA nGALL (cuid) (ar lean)</b>							<b>DONEGAL COUNTY (pt.) (contd.)</b>
<b>Na Gleannta Tuathcheantar (cuid)</b>	<b>15,489</b>	<b>13,957</b>	<b>13,287</b>	<b>11,301</b>	<b>1,986</b>	<b>85.1</b>	<b>Glenties Rural District (pt.)</b>
<b>Toghrainn Cheantair:</b>							<b>District Electoral Divisions:</b>
Anagaire	2,267	1,998	1,921	1,779	142	92.6	Annagary
Árainn Mhor	1,131	948	912	886	26	97.1	Aran
Ard an Rátha (cuid)	64	60	58	22	36	37.9	Ardara (pt.)
Cró Beithe	349	319	303	297	6	98.0	Crovehy
Cró Caorach	272	254	238	235	3	98.7	Crowkeeragh
An Duchoraigh	163	138	135	129	6	95.6	Doocharry
An Clochán Liath	1,413	1,348	1,258	909	349	72.3	Dunglow
Baile na Finne	408	395	377	357	20	94.7	Fintown
Gleann Cholm Cille	922	866	822	782	40	95.1	Glencolumbkille
Gleann Gheis (cuid)	221	218	202	170	32	84.2	Glengesh (pt.)
Gleann Léithín	422	358	341	335	6	98.2	Glenleheen
Na Gleannta (cuid)	359	306	295	201	94	68.1	Glenties (pt.)
An Grafadh	655	565	550	540	10	98.2	Graffy
Inis Chaol	305	284	263	247	16	93.9	Inishkeel
Cill Charthaigh	758	736	684	627	57	91.7	Kilcar
Cill Ghabhlaigh	692	676	648	621	27	95.8	Kilgoly
An Leargan Mor (cuid)	428	421	400	362	38	90.5	Largymore (pt.)
Léitir Mhic an Bheird	986	894	852	583	269	68.4	Lettermacaward
An Machaire	1,033	881	856	611	245	71.4	Maghery
Malainn Uígh	473	445	415	341	74	82.2	Malinbeg
Mulmosog (cuid)	220	213	205	118	87	57.6	Mulmosog (pt.)
Iris Mic an Duirn	1,912	1,634	1,552	1,149	403	74.0	Rutland
<b>Léitir Ceannainn Tuathcheantar (cuid)</b>	<b>176</b>	<b>144</b>	<b>139</b>	<b>108</b>	<b>31</b>	<b>77.7</b>	<b>Letterkenny Rural District (pt.)</b>
<b>Toghrainn Cheantair:</b>							<b>District Electoral Divisions:</b>
Mín an Lábaín (cuid)	144	112	109	81	28	74.3	Church Hill (pt.)
Gartan (cuid)	3	3	3	-	3	-	Gartan (pt.)
Sidhe-chor (cuid)	29	29	27	27	-	100.0	Seacor (pt.)
<b>Baile na nGalloglach Tuathcheantar (cuid)</b>	<b>3,441</b>	<b>3,224</b>	<b>3,059</b>	<b>2,612</b>	<b>441</b>	<b>85.6</b>	<b>Millford Rural District (pt.)</b>
<b>Toghrainn Cheantair:</b>							<b>District Electoral Divisions:</b>
Carraig Airt (cuid)	344	334	317	212	105	66.9	Carrickart (pt.)
Ceathramha Chaol (cuid)	23	17	17	17	-	100.0	Carrowkeel (pt.)
Creamhghort (cuid)	426	399	377	315	62	83.6	Cranford (pt.)
Fánaid Thuaidh (cuid)	775	700	655	587	68	89.6	Fanad North (pt.)
Fánaid Thiar (cuid)	342	332	314	298	16	94.9	Fanad West (pt.)
Dún Glas (cuid)	34	35	31	22	9	71.0	Greenfort (pt.)
Cnoc Eala (cuid)	179	185	171	164	7	95.9	Knockalla (pt.)

TABLE 13 (ar lean):- An daonra iomlán i 1956 agus i 1961 agus an líon iomlán daoine 3 bliana d'aois agus os a chionn i 1961, ag idirdhealú Ghaeilgeoirí agus Neamh-Ghaeilgeoirí, i dToghanna Ceantair nó coda de Toghanna Ceantair sa Ghaeltacht mar a mhínítear sin le hOrdú na Limistéirí Gaeltachta, 1956.

TABLE 13 (contd.): - Total population in 1956 and 1961 and total persons 3 years of age and over in 1961, distinguishing Irish speakers and non-Irish speakers, in District Electoral Divisions or parts of District Electoral Divisions within the Gaeltacht as defined by the Gaeltacht Areas Order, 1956.

Toghraínn Cheantair	Daonra Iomlán Total population		Daoine 3 bliana d'aois agus os a chionn Persons aged 3 years and over				District Electoral Division
			An tIomlán Total	Gaeil-geoirí Irish speakers	Neamh-Ghaeil-geoirí Non-Irish speakers	Gaeil-geoirí mar chéatadán den iomlán Irish speakers as percentage of total	
<b>CONTAE DHÚN NA nGALL (cuid) (ar lean)</b>							<b>DONEGAL COUNTY (pt.) (contd.)</b>
Bailte na nGalloglach Tuathcheantar (cuid) (ar lean)							Millford Rural District (pt.) (contd.)
Toghraínn Cheantair (ar lean):							District Electoral Division (contd.):
Loch Caol (cuid)	43	41	39	31	8	79.5	Loughkeel (pt.)
Ros Guill	956	905	863	733	130	84.9	Rosguill
An Tearmann (cuid)	319	276	269	233	36	86.6	Termon (pt.)
Strath an Urláir Tuathcheantar (cuid)	1,120	1,000	960	897	129	87.2	Stranorlar Rural District (pt.)
Toghraínn Cheantair:							District Electoral Division:
Alt na Péiste (cuid)	338	285	276	220	56	79.7	Altnapaste (pt.)
An Clochán (cuid)	735	674	643	579	64	90.0	Cloghan (pt.)
Mín Charraigeach (cuid)	47	41	41	38	3	92.7	Meencargagh (pt.)
<b>CONTAE NA GAILLIMHE (cuid)</b>	<b>24,584</b>	<b>22,877</b>	<b>21,503</b>	<b>19,895</b>	<b>1,608</b>	<b>92.5</b>	<b>GALWAY COUNTY (pt.)</b>
Gaillimh Thuaidh Uirbeach (cuid)	171	194	178	114	64	64.0	Galway North Urban District (pt.)
Toghraínn Cheantair: Gaillimh Thuaidh Uirbeach (cuid)	171	194	178	114	64	64.0	District Electoral Division: Galway North Urban (pt.)
An Clochán Tuathcheantar (cuid)	3,444	3,146	2,945	2,638	307	89.6	Clifden Rural District (pt.)
Toghraínn Cheantair:							District Electoral Division:
Beann Corr (cuid)	170	153	142	71	71	50.0	Bencorr (pt.)
Na hUilleannaí	213	170	166	152	14	91.6	Illion
An-Cnoc Buí	1,071	1,019	947	901	46	95.1	Knockboy
Muigh-Iorras (cuid)	253	193	187	113	74	60.4	Moyrus (pt.)
Abhainn Ghabhla	599	559	514	481	33	93.6	Owengowla
Cloch na Rón (cuid)	239	237	227	168	59	74.0	Roundstone (pt.)
Scaímh	899	815	762	752	10	98.7	Skannive
Gaillimh Tuathcheantar (cuid)	11,412	10,957	10,297	9,453	844	91.8	Galway Rural District (pt.)
Toghraínn Cheantair:							District Electoral Division:
Eannach Dhúin	924	841	788	628	160	79.7	Annaghdown
Baile an Teampaill (cuid)	50	50	47	41	6	87.2	Ballintemple (pt.)
Bearna (cuid)	951	1,041	985	749	236	76.0	Barna (pt.)
An Carn Mór	575	594	544	494	50	90.8	Carnmore
Ceathramha Bhrún	466	472	441	419	22	95.0	Carrowbrowne
Baile Chláir na Gaillimhe	708	627	590	546	44	92.5	Claregalway
Na Forbacha	543	490	454	445	19	95.9	Furbogh
Gaillimh Tuath (cuid)	277	276	257	240	17	93.4	Galway Rural (pt.)

TABLE 13 (ar lean):- An daonra iomlán i 1956 agus i 1961 agus an líon iomlán daoine 3 bliana d'aois agus os a chionn i 1961, ag idirdhealú Ghaeilgeoirí agus Neamh-Ghaeilgeoirí, i dToghanna Ceantair nó coda de Toghanna Ceantair sa Ghaeltacht mar a mhínítear sin le hOrdú na Limistéirí Gaeltachta, 1956.

TABLE 13 (contd.): - Total population in 1956 and 1961 and total persons 3 years of age and over in 1961, distinguishing Irish speakers and non-Irish speakers, in District Electoral Divisions or parts of District Electoral Divisions within the Gaeltacht as defined by the Gaeltacht Areas Order, 1956.

Toghrainn Cheantair	Daonra Iomlán Total population		Daoine 3 bliana d'aois agus os a chionn Persons aged 3 years and over				District Electoral Division
			An tIomlán Total	Gaeilgeoirí Irish speakers	Neamh-Ghaeilgeoirí Non-Irish speakers	Gaeilgeoirí mar chéatadán den iomlán Irish speakers as percentage of total	
	1956	1961				%	
<b>CONTAE NA GAILLIMHE (cuid) (ar lean)</b>							<b>GALWAY COUNTY (pt.) (contd.)</b>
<b>Gaillimh Tuathcheantar (cuid) (ar lean)</b>							<b>Galway Rural District (pt.) (contd.)</b>
<b>Toghrainn Cheantair (ar lean):</b>							<b>District Electoral Division (contd.):</b>
Inis Mór	1,681	1,651	1,544	1,522	22	98.6	Inishmore
Cill Chuimín	1,351	1,161	1,100	1,097	3	99.7	Kilcummin
Cill Aithninn	702	648	623	609	14	97.8	Killannin
An Leaca Bheag (cuid)	122	121	110	88	22	80.0	Lackaghbeg (pt.)
Lisín an Bhaile (cuid)	33	33	30	29	1	96.7	Lisheenavalla (pt.)
Mágh Cuilinn	477	458	437	344	93	78.7	Moycullen
Sailchearnach	851	819	767	745	22	97.1	Selerna
Sliabh an Ionga	592	562	528	499	29	94.5	Slieveaneena
An Spideál	740	733	688	660	28	95.9	Spiddle
Tulach Aodháin (cuid)	369	380	354	298	56	84.2	Tullokyne (pt.)
<b>Uachtar Ard Tuathcheantar (cuid)</b>	<b>9,557</b>	<b>8,580</b>	<b>8,083</b>	<b>7,690</b>	<b>993</b>	<b>95.1</b>	<b>Oughterard Rural District (pt.)</b>
<b>Toghrainn Cheantair:</b>							<b>District Electoral Division:</b>
Camus	519	438	416	405	11	97.4	Camus
An Fháirche	1,064	1,037	980	768	212	78.4	Cloonbur
Conga	764	666	641	595	46	92.8	Cong
An Crampan	2,237	1,956	1,859	1,821	38	98.0	Crumpaun
An Chorr	245	214	200	195	5	97.5	Cur
Garmna	1,860	1,730	1,598	1,565	33	97.9	Gorumna
Cill Chuimín	217	201	192	187	5	97.4	Kilcummin
Leitir Breacáin (cuid)	101	86	84	73	11	86.9	Letterbrickaun (pt.)
Leitir Móir	1,239	1,085	1,007	989	18	98.2	Lettermore
An Ros	224	197	188	182	6	96.8	Ross
An Turloch	1,087	970	918	910	8	99.1	Turlough
<b>CONTAE CHIARRAÍ (cuid)</b>							<b>KERRY COUNTY (pt.)</b>
<b>Cathair Saldhbhín Tuathcheantar (cuid)</b>							<b>Cahersiveen Rural District (pt.)</b>
<b>Toghrainn Cheantair:</b>							<b>District Electoral Division:</b>
Na Beitheacha (cuid)	25	23	22	12	10	54.5	Bahags (pt.)
Baile an Sceillig	686	628	606	562	44	92.7	Ballinskelliga
Baile Bhric (cuid)	115	114	107	94	13	87.9	Ballybrack (pt.)
Cathair Donall (cuid)	113	104	94	75	19	79.8	Caherdaniel (pt.)
Ceanúig (cuid)	340	296	287	263	24	91.6	Canuig (pt.)
Doire Fhionáin (cuid)	274	234	227	188	39	82.8	Darrynane (pt.)
Doire Ianna	400	358	345	303	42	87.8	Derriana
An tImleach (cuid)	419	387	374	335	39	89.6	Emlagh (pt.)
Loch an Choireáin (cuid)	38	38	38	29	9	76.3	Loughcurrane (pt.)
Maistir Gaoithe	190	176	171	147	24	86.0	Mastergeehy
An Gleann Iarthach	247	222	207	158	49	76.3	St. Finan's
Tir Aniarthach (cuid)	189	169	165	116	49	70.3	Teeranearagh (pt.)

TABLE 13 (ar lean):- An daonra iomlán i 1956 agus i 1961 agus an líon iomlán daoine 3 bliana d'aois agus os a chionn i 1961, ag idirdhealú Ghaeilgeoirí agus Neamh-Ghaeilgeoirí, i dToghanna Ceantair nó coda de Toghanna Ceantair sa Ghaeltacht mar a mhínítear sin le hOrdú na Limistéirí Gaeltachta, 1956.

TABLE 13 (contd.): - Total population in 1956 and 1961 and total persons 3 years of age and over in 1961, distinguishing Irish speakers and non-Irish speakers, in District Electoral Divisions or parts of District Electoral Divisions within the Gaeltacht as defined by the Gaeltacht Areas Order, 1956.

Toghraínn Cheantair	Daonra Iomlán Total population		Daoine 3 bliana d'aois agus os a chionn Persons aged 3 years and over				District Electoral Division
			An tIomlán Total	Gaeilgeoirí Irish speakers	Neamh-Ghaeilgeoirí Non-Irish speakers	Gaeilgeoirí mar chéadán den iomlán Irish speakers as percentage of total	
	1956	1961				%	
<b>CONTAE CHIARRAÍ (cuid) (ar lean)</b>							<b>KERRY COUNTY (pt.) (contd.)</b>
<b>An Daingean Tuathcheantar (cuid)</b>	<b>6,991</b>	<b>8,987</b>	<b>8,672</b>	<b>4,925</b>	<b>747</b>	<b>86.8</b>	<b>Dingle Rural District (pt.)</b>
<b>Toghraínn Cheantair:</b>							<b>District Electoral Divisions:</b>
An Daingean	1,453	1,460	1,381	927	454	67.1	Dingle
Dún Chaoin	200	188	180	177	3	98.3	Dunquin
Dún Urlann	455	393	373	367	6	98.4	Dunurlin
Na Gleannta	1,109	1,060	1,012	871	141	86.1	Glin
Cill Maolchheadar	705	672	637	591	46	92.8	Kilmalkedar
Cill Chuáin	654	623	582	571	11	98.1	Kilquane
Cinnáird	522	462	441	414	27	93.9	Kinard
Márthain	314	262	252	250	2	99.2	Marhin
Mínáird	435	426	398	362	36	91.0	Minard
Fiontraigh	484	441	416	395	21	95.0	Ventry
<b>CONTAE MHAIGH EO (cuid)</b>							<b>MAYO COUNTY (pt.)</b>
<b>Béal an Átha Tuathcheantar (cuid)</b>	<b>394</b>	<b>331</b>	<b>316</b>	<b>143</b>	<b>173</b>	<b>45.3</b>	<b>Ballina Rural District (pt.)</b>
<b>Toghraínn Cheantair:</b>							<b>District Electoral Divisions:</b>
Béal Deirg Mór	394	331	316	143	173	45.3	Beldergmore
<b>Baile an Róba Tuathcheantar (cuid)</b>	<b>1,819</b>	<b>1,523</b>	<b>1,454</b>	<b>1,359</b>	<b>101</b>	<b>93.1</b>	<b>Ballinrobe Rural District (pt.)</b>
<b>Toghraínn Cheantair:</b>							<b>District Electoral Divisions:</b>
Baile an Chalaídh	396	327	313	299	14	95.5	Ballinchalla
Baile Odhbha (cuid)	325	267	262	250	12	95.4	Ballyovey (pt.)
An Ceapach Dubh	438	401	370	309	61	83.5	Cappaghduff
Abhainn Brain	581	471	453	440	13	97.1	Owenbrin
Partraighe (cuid)	79	57	56	55	1	98.2	Portroyal (pt.)

TABLE 13 (ar lean):- An daonra iomlán i 1956 agus i 1961 agus an líon iomlán daoine 3 bliana d'aois agus os a chionn i 1961, ag idirdhealú Ghaeilgeoirí agus Neamh-Ghaeilgeoirí, i dToghanna Ceantair nó coda de Toghanna Ceantair sa Ghaeltacht mar a mhínítear sin le hOrdú na Limistéirí Gaeltachta, 1956.

TABLE 13 (contd.): - Total population in 1956 and 1961 and total persons 3 years of age and over in 1961, distinguishing Irish speakers and non-Irish speakers, in District Electoral Divisions or parts of District Electoral Divisions within the Gaeltacht as defined by the Gaeltacht Areas Order, 1956.

Toghraínn Cheantair	Daonra Iomlán Total population		Daoine 3 bliana d'aois agus os a chionn Persons aged 3 years and over				District Electoral Division
			An tIomlán	Gaeilgeoirí	Neamh-Ghaeilgeoirí	Gaeilgeoirí mar chéatadán den iomlán	
			Total	Irish speakers	Non-Irish speakers	Irish speakers as percentage of total	
	1956	1961				%	
<b>CONTAE MHAIGH EO (cuid) (ar lean)</b>							<b>MAYO COUNTY (pt.) (contd.)</b>
<b>Beal an Mhuirthead Tuathcheantar (cuid)</b>	<b>11,598</b>	<b>10,460</b>	<b>9,849</b>	<b>7,068</b>	<b>2,781</b>	<b>71.8</b>	<b>Belmullet Rural District (pt.)</b>
<b>Toghraínn Cheantair:</b>							<b>District Electoral Division:</b>
An Geata Mór Thuaidh	1,310	1,166	1,100	705	395	64.1	An Geata Mór Thuaidh
An Geata Mór Theas	1,508	1,405	1,313	1,070	243	81.5	An Geata Mór Theas
Barr Rúscaighe	287	264	243	112	131	46.1	Barroosky
Beal an Mhuirthead	1,948	1,756	1,669	909	760	54.5	Belmullet
Gleann na Muaidhe	421	413	381	202	179	53.0	Glenamoy
Gleann Chaisil	808	746	694	415	279	59.8	Glencastle
Guala Mhór (cuid)	317	239	221	178	43	80.5	Goolamore (pt.)
Cnoc an Daimh	667	612	578	563	15	97.4	Knockadaff
Cnoc na Lobhar	1,432	1,347	1,257	893	364	71.0	Knocknalower
Muing na Bo	564	532	505	465	40	92.1	Muingnabo
Na Muingi	489	433	402	335	67	83.3	Muings
Cnoc na Rátha	1,844	1,547	1,486	1,221	265	82.2	Rath Hill
<b>Caisleán an Bharralgh Tuathcheantar (cuid)</b>	<b>88</b>	<b>84</b>	<b>76</b>	<b>56</b>	<b>20</b>	<b>73.7</b>	<b>Castlebar Rural District (pt.)</b>
<b>Toghraínn Cheantair:</b>							<b>District Electoral Division:</b>
Tamhnaigh na Groighe (cuid)	88	84	76	56	20	73.7	Tawnynagry (pt.)
<b>Cathair na Mart Tuathcheantar (cuid)</b>	<b>4,933</b>	<b>3,877</b>	<b>3,682</b>	<b>2,979</b>	<b>703</b>	<b>80.9</b>	<b>Westport Rural District (pt.)</b>
<b>Toghraínn Cheantair:</b>							<b>District Electoral Division:</b>
Acaill	1,596	1,462	1,385	1,134	251	81.9	Achill
Corrán Acla	1,263	1,147	1,097	838	259	76.4	Corraun Achill
Dú Éige	1,474	1,268	1,200	1,007	193	83.9	Dooga
<b>CONTAE PHORT LAIRGE (cuid)</b>	<b>948</b>	<b>792</b>	<b>738</b>	<b>689</b>	<b>49</b>	<b>93.4</b>	<b>WATERFORD COUNTY (pt.)</b>
<b>Dún Garbhán Tuathcheantar (cuid)</b>	<b>948</b>	<b>792</b>	<b>738</b>	<b>689</b>	<b>49</b>	<b>93.4</b>	<b>Dungarvan Rural District (pt.)</b>
<b>Toghraínn Cheantair:</b>							<b>District Electoral Division:</b>
Baile Mhac Airt (cuid)	213	212	199	171	28	85.9	Ballymacart (pt.)
An Rinn (cuid)	735	580	539	518	21	96.1	Ringville (pt.)

