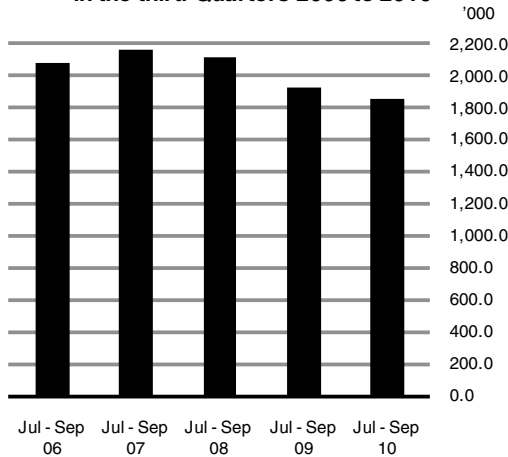




Quarterly National Household Survey Quarter 3 2010

**Numbers in employment (ILO),
in the third Quarters 2006 to 2010**



ILO¹ Labour Force

	In Employment	Unemployed	Labour Force
Jul-Sep 2009	1,922.4	279.8	2,202.3
Oct-Dec 2009	1,887.7	267.4	2,155.2
Jan-Mar 2010	1,857.6	275.0	2,132.7
Apr-Jun 2010	1,859.1	293.6	2,152.7
Jul-Sep 2010	1,851.5	299.0	2,150.5
<i>Change in quarter</i>	-7.6	+5.4	-2.2
<i>Change in year</i>	-70.9	+19.2	-51.8

¹ International Labour Office Classification.

Employment decline slows to 3.7% in the year to Q3 2010

There were 1,851,500 persons in employment in the third quarter of 2010, an annual decrease of 70,900 or 3.7%. This compares with an annual decrease of 4.1% in the previous quarter and a decline of 8.8% in the year to the third quarter of 2009. The annual decrease of 3.7% in the number of persons in employment is the lowest fall since the third quarter of 2008 when the rate of decrease was 2.0%. On a seasonally adjusted basis employment fell by 23,500 in the quarter. See *table 1, table 3 and graph opposite*.

In the third quarter of 2010 there were 299,000 persons unemployed, an increase of 19,200 (+6.9%) in the year. This is the lowest annual increase in unemployment since an increase of 11,300 was recorded in the first quarter of 2008. Male unemployment increased by 9,500 (+4.9%), with the number of unemployed females increasing by 9,600 (+10.9%). When seasonal factors are taken into account there was a quarterly increase of 3,800 in the numbers unemployed with the seasonally adjusted unemployment rate increasing from 13.2% to 13.6% over the quarter. See *table 1 and table 3*.

The long-term unemployment rate in the third quarter of 2010 was 6.5% compared with 3.2% in the third quarter of 2009. See *table 16 and table 17*.

The total number of persons in the labour force in the third quarter of 2010 was 2,150,500, representing a decrease of 51,800 or 2.4% over the year. This compares with an annual labour force decrease of 2.8% or 64,300 in the third quarter of 2009. The overall participation rate declined from 62.5% in Q3 2009 to 61.2% in Q3 2010. See *table 1 and table 9*.

The latest available figures for all EU-27 member states, which are for the second quarter of 2010, show that between the second quarters of 2009 and 2010 Ireland's employment level fell by 3.6% while its labour force declined by 1.8%. This compares with a decline in employment of 0.6% in the EU-27 countries while the size of the EU-27 labour force increased by 0.2% in the year to Q2 2010. Ireland's unemployment rate of 13.5% was 4.0 percentage points higher than the EU-27 average unemployment rate of 9.5%. The estimated EU unemployment rate for August 2010 was 9.6% compared with a seasonally adjusted rate of 13.6% in Ireland for Q3 2010. See *table 25*.

Published by the Central Statistics Office, Ireland.

Ardee Road Skehard Road
Dublin 6 Cork
Ireland Ireland

LoCall: 1890 313 414 (ROI)
0870 8760256 (UK/NL)

Tel: +353 1 498 4000 Tel: +353 21 453 5000
Fax: +353 1 498 4229 Fax: +353 21 453 5492

Both offices may be contacted through any of these telephone numbers.

CSO on the Web: www.cso.ie
and go to

Labour Market and Earnings: Labour Market

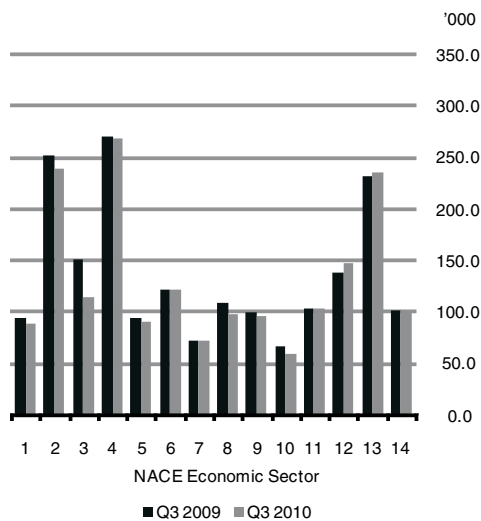
Director General: Gerard O'Hanlon

Enquiries:

Labour Market Statistics Direct Dial (021) 453 5491
Email: labour@cso.ie
Queries and Sales Information Section, ext 5021
information@cso.ie

© Central Statistics Office
The contents of this release may be quoted provided the source is given clearly and accurately. Reproduction for own or internal use is permitted.

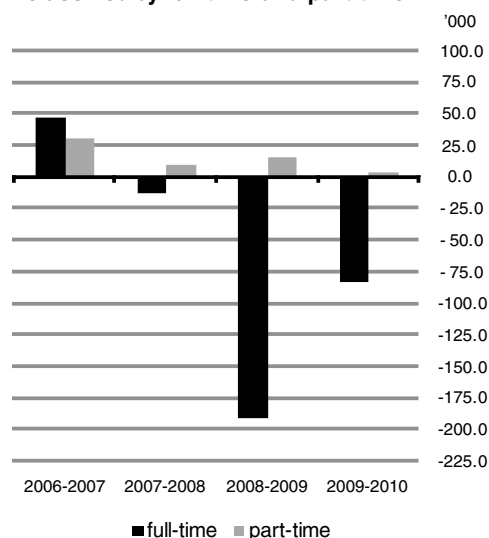
Persons aged 15 years and over in employment (ILO) classified by NACE Economic Sector, Quarter 3 2009 and Quarter 3 2010



KEY

- 1- A Agriculture, forestry and fishing
- 2- B-E Industry
- 3- F Construction
- 4- G Wholesale and retail trade; repair of motor vehicles and motorcycles
- 5- H Transportation and storage
- 6- I Accommodation and food service activities
- 7- J Information and communication
- 8- K-L Financial, insurance and real estate activities
- 9- M Professional, scientific and technical activities
- 10- N Administrative and support service activities
- 11- O Public administration and defence; compulsory social security
- 12- P Education
- 13- Q Human health and social work activities
- 14- R-U Other NACE activities

Employment trends in the third Quarters 2006 to 2010 classified by full-time and part-time



Annual decline of 36,800 in Construction sector

Employment fell on an annual basis in eleven of the fourteen economic sectors. The largest decline in employment continued to be recorded in the *Construction* sector where the numbers employed fell by 36,800 (-24.3%) over the year. Employment in the *Construction* sector has now fallen by almost 58% since its peak in the second quarter of 2007. The next largest annual decreases in employment were recorded in the *Industry* and *Financial, insurance and real estate activities* sectors where the numbers employed fell by 11,200 (-4.4%) and 10,300 (-9.4%) respectively. The largest increase was recorded in the *Education* sector (+9,800). Studies indicate however that the increase appears to be due to sampling issues rather than a genuine underlying increase. In respect of public sector employment a separate section is included on page 3 to present the best available estimates of the trend in public sector employment broken down by sector. See table 2b, graph opposite and Background Notes.

Full-time employment declines by 73,500 over the year

Full-time employment fell by 73,500 on an annual basis with declines in both male (-46,500) and female (-27,000) full-time employment. The largest decreases in full-time employment occurred in the *Construction* (-35,400), *Industry* (-9,500) and *Financial, insurance and real estate activities* (-8,300) sectors. In the third quarter of 2010, full-time employment for males in the *Construction* sector was 93,100 compared with a peak of 249,900 in Q4 2006. See table 1, table 2b and graph opposite.

There was an increase of 2,600 in the numbers employed part-time, with male part-time employment increasing by 1,100 over the year and female increasing by 1,500. See table 1.

There was an annual decrease of 45,500 or 4.4% in the number of men in employment, while the number of women in employment decreased by 25,400 or 2.9%. See table 1.

The overall employment rate among persons aged 15-64 fell by 1.8 percentage points to 60.3%, down from 62.1% in Q3 2009. The employment rate for persons aged 15-64 has fallen on an annual basis in each quarter since Q4 2007 and is now back at a level comparable with that last seen in the second quarter of 1998. See table 12 and graph on page 3.

With the exception of *Professional* (+8,200) and *Associate professional and technical* (+1,400), all occupational groups showed a decline in employment over the year. The largest decreases were recorded in the *Craft and related* (-31,600), *Managers and administrators* (-19,000) and *Clerical and secretarial* (-12,400) groups. See table 4.

There were 1,534,800 employees in the third quarter of 2010 representing an annual decrease of 42,500 or 2.7%. The number of self-employed persons in Q3 2010 was 304,500, a decrease of 23,900 or 7.3% over the year. See table 6.

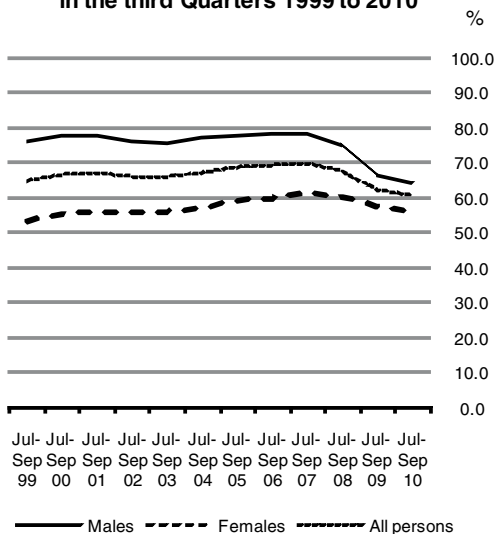
Public Sector employment

As noted in the Q2 2010 Earnings and Labour Costs release public sector employment is spread across a number of NACE economic sectors, and includes semi-state organisations in sectors such as *Transportation and storage* and *Information and communications* among others. Furthermore while employment in the *Public administration and defence, Education and Human health and social work* sectors are mainly in the public sector there is some element of private sector employment also. Specifically, in the case of *Human health and social work* more than one third of employees are in the private sector while in the *Education* sector close to one fifth of employees are private sector.

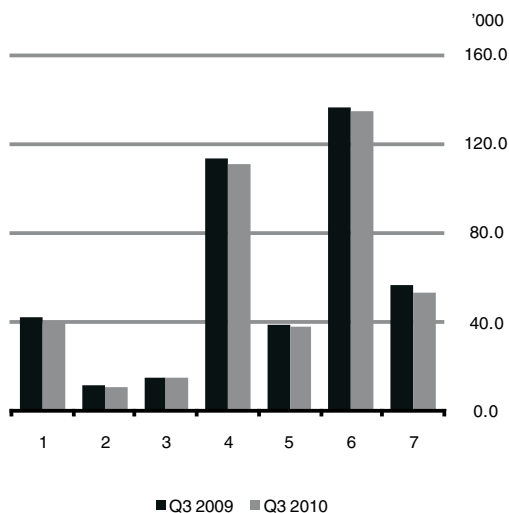
There are two CSO surveys which can potentially provide information on public sector employment. The QNHS can provide estimates based on all respondents who are in employment being asked whether they work in the public sector or not. The Earnings, Hours and Employment Costs Survey (EHECS), which is the source of the quarterly Earnings and Labour Costs data, provides estimates based on responses from the employer. Specifically in the case of EHECS there is a response level of close to 80% for public sector employers over time.

Based on the high response levels and lower levels of subjectivity associated with EHECS the CSO believes it offers a more reliable source for public sector employment estimates over time and the CSO proposes to publish data from EHECS as the primary series on public sector employment for future labour market releases. Table 1.1 below shows the estimates of public sector employment broken down by the different high level areas within the public

Employment rates for persons aged 15 to 64 classified by sex, in the third Quarters 1999 to 2010



Public Sector employment, Quarter 3 2009 and Quarter 3 2010



- KEY**
- 1- Civil Service
 - 2- Defence
 - 3- Garda Síochána
 - 4- Education
 - 5- Regional bodies
 - 6- Health
 - 7- Semi-state bodies

sector. Overall employment in the public sector fell by 10,000 (-2.4%) between Q3 2009 and Q3 2010. This compares with a decrease of 6,400 (-1.5%) in the year to Q3 2009.

Total public sector numbers are also published by the Department of Finance on a quarterly basis. Those differ in coverage from the estimates in table 1.1 as Department of Finance estimates are based on full-time equivalents which will change over time based on both changes in working hours and number of persons employed. The estimates from EHECS in table 1.1 represent the estimated total number of employees within the public sector. Department of Finance estimates also exclude commercial semi-state bodies so for comparability purposes a figure excluding semi-state bodies is included in table 1.1. Differences in the level of the two sets of estimates primarily reflect part-time employment within the different sectors which would generally cause estimates on a full-time equivalent basis (i.e. those produced by the Department of Finance) to be lower. Differences in trend could be caused by changes in the proportion of part-time staff within the public sector and/or other changes in average working hours. The CSO will undertake further analysis to produce estimates on total hours worked for future releases to give a better insight into changes in overall labour input within the public sector.

Table 1.1 Public Sector employment by sub-sector and quarter*

Sectors	Jan-Mar-08	Jul-Sep-08	Jan-Mar-09	Jul-Sep-09	Jan-Mar-10	Jul-Sep-10	Year on year change to Q3 2010
Civil Service	41.7	43.0	42.2	41.6	40.1	39.9	-1.7
Defence	11.2	11.0	11.0	10.8	10.5	10.3	-0.5
Garda Síochána	14.9	14.2	14.6	14.7	14.6	14.6	-0.1
Education	116.1	113.2	120.2	113.3	113.6	110.9	-2.4
Regional bodies	38.9	40.7	38.4	37.9	36.2	37.8	-0.1
Health	137.8	137.8	137.7	136.4	135.5	134.2	-2.2
Total Public Sector excluding Semi-State bodies	360.6	359.9	364.1	354.7	350.5	347.7	-7.0
Semi-State bodies	56.4	57.0	56.9	55.8	53.2	52.8	-3.0
Total Public Sector including Semi-State bodies	417.0	416.9	421.0	410.5	403.7	400.5	-10.0

Note: See text on page 2.

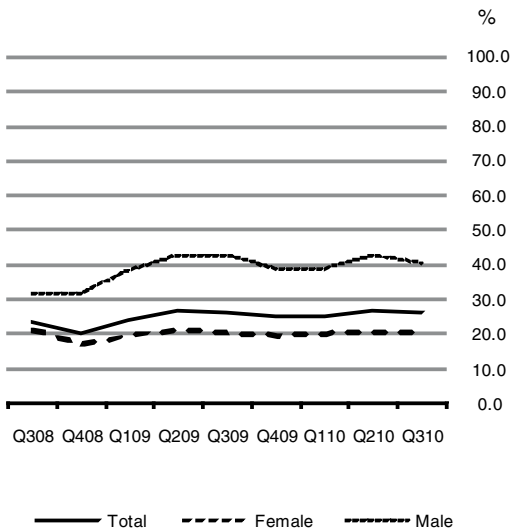
* Source: Earnings, Hours and Employment Costs survey. In comparing these estimates to estimates from the Department of Finance it should be noted that the sectors presented may differ slightly in coverage to those published by the Department of Finance.

The data on public sector employment are also being published in the Earnings and Labour Costs release for Q3 2010.

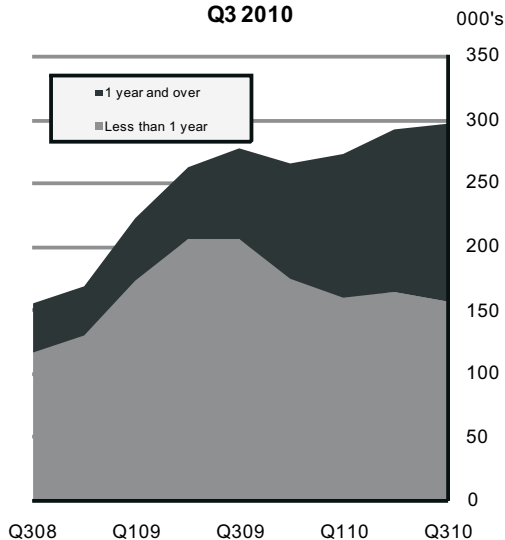
Part-time Underemployment

The number of underemployed persons may serve as a measure of under-utilised labour in the economy. Following developmental work at EU level on indicators to supplement the unemployment rate a new definition is now being applied to the underemployment measure. Underemployed persons are now defined as those who are employed part-time and are available and willing to work more hours. The old definition required that not only should a respondent want and be available to work more hours but they should also be actively looking for another job to increase those hours. The difference between the two measures is the removal of the requirement that the person be actively seeking additional work. The level of underemployment recorded under the new definition is significantly higher than the level recorded under the old definition. Specifically by the old definition part-time underemployment was recorded as 18,900 in Q3 2010 compared with 108,800 under the new definition. For future purposes the CSO proposes to include only the new measure of underemployment on table 1 and other tables which

% of part-time employed who are underemployed, Q3 2008 to Q3 2010



Number of persons unemployed by duration of unemployment, Q3 2008 to Q3 2010



include part-time underemployment. (See table 1.2 and Background Notes for additional information).

Of the 414,700 people employed part-time in Q3 2010, 26.2% (108,800) would like to work more hours. This compares with 26.4% in Q3 2009. In the third quarter of 2010, 40.5% of males working part-time wished to work more hours, compared with 20.6% of females. Since Q3 2008, the proportion of males who are underemployed has increased from 31.5% to 40.5%, while females have decreased from 21.0% to 20.6%. The number of persons defined as part-time underemployed is highest in the *Wholesale and retail trade; repair of motor vehicles and motorcycles* (22,700) and *Human health and social work activities* (14,100) sectors. See table 1.2.

Table 1.2 Persons aged 15 years and over in part-time employment (ILO) classified by sex and part-time status

Part-time status	'000		
	Jul-Sep-08	Jul-Sep-09	Jul-Sep-10
Employed part-time			
Male	96.9	116.5	117.6
Female	297.5	295.6	297.1
Total	394.4	412.1	414.7
Part-time underemployed (old definition)			
Male	5.3	8.6	9.1
Female	7.3	6.7	9.8
Total	12.6	15.3	18.9
Part-time underemployed (new definition)			
Male	30.5	49.7	47.6
Female	62.5	59.3	61.3
Total	92.9	108.9	108.8

Note: See text on page 3 and Background Notes.

Number of unemployed increases to 299,000

There were 201,500 males and 97,500 females unemployed in the third quarter of 2010, bringing the total number of unemployed up to 299,000, an increase of 19,200 (+6.9%) in the year. The number of unemployed males increased by 9,500 (+4.9%), with female unemployment increasing by 9,600 (+10.9%). See table 1 and table 13.

On a seasonally adjusted basis the number of persons unemployed increased by 3,800 between Q2 2010 and Q3 2010. See table 3.

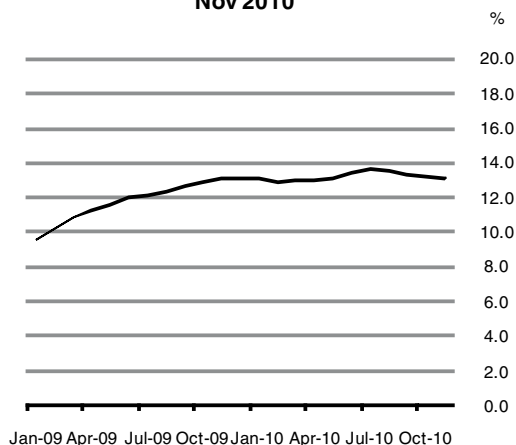
The unemployment rate increased from 12.7% to 13.9% over the year. The unemployment rate is at a level comparable with that last recorded in 1994 and 1995 when the unemployment rates were 14.7% and 12.2% respectively. The male unemployment rate was 16.8% and the female unemployment rate was 10.2% in Q3 2010. See table 1.

Seasonally adjusted, the male and female unemployment rates stood at 16.7% and 9.6% respectively in the third quarter of 2010. See table 3.

Long-term unemployment rate increases to 6.5%

In the year to Q3 2010, the number of long-term unemployed persons increased by 69,000, bringing total long-term unemployment to 140,400. The long-term unemployment rate now stands at 6.5% compared with 3.2% in the third quarter of 2009 and 1.7% in the third quarter of 2008. As of Q3 2010, long-term unemployment accounted for almost 47.0% of total unemployment compared with 25.5% a year earlier. Long-term unemployment constitutes a larger proportion of total unemployment among males than females (52.5% compared with 35.6%). See table 16, table 17, table 18 and graph opposite.

Seasonally adjusted Standardised Unemployment Rate (SUR), Jan 2009 to Nov 2010



Total short-term unemployment was 156,200 in the third quarter of 2010, a decrease of 49,600 on an annual basis. This continues the trend first seen in Q1 2010 where the short-term unemployment fell on an annual basis for the first time since Q1 2005. In the year to Q3 2009, short-term unemployment had increased by 88,500. See table 16, table 17, table 18 and graph opposite.

Standardised Unemployment Rate (SUR)

The standardised unemployment rate (SUR), as published in the monthly Live Register release, was 13.8% in August. This compares with the 13.6% seasonally adjusted rate now published from the QNHS for Q3 2010. As a result of this the SUR as published will be revised as per table 1.3 below. This revision primarily affects the SUR estimates for August 2010 onwards. Specifically the published SUR of 13.5% for November is revised to 13.2%. These revisions will be reflected in the December 2010 Live Register release which will be published in early January 2011. See table 1.3.

Table 1.3 Seasonally Adjusted Standardised Unemployment Rates (SUR) by month

Month	2009	2010
January	9.5	13.1
February	10.2	12.9
March	10.8	13.0
April	11.3	13.0
May	11.6	13.2
June	12.0	13.5
July	12.2	13.7
August	12.4	13.6
September	12.7	13.4
October	12.9	13.3
November	13.1	13.2
December	13.1	

Note: See text on page 5 and Background Notes.

ILO participation rates classified by age group, Quarter 3 2009 and Quarter 3 2010



Decline in labour force driven by falling participation

There were 2,150,500 persons in the labour force in the third quarter of 2010, an annual decrease of 2.4% (-51,800). Almost 68% of the decline in the size of the labour market is attributable to a decline in participation of 35,000. See table 1, table 8 and table 9.

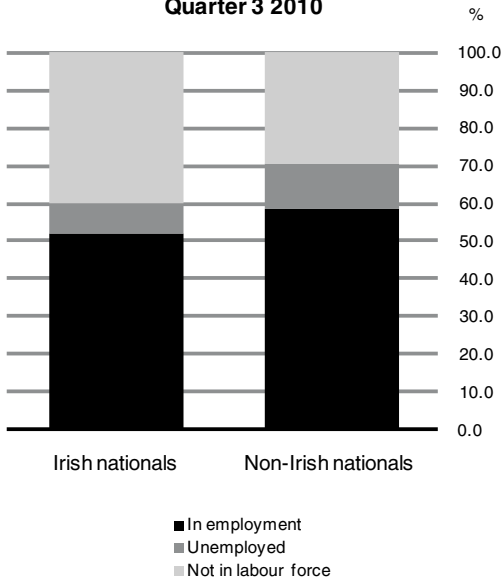
In addition to changes in participation, the labour force is also affected by changes in the number of persons of working age in the State (demographic effect). Up to the start of 2008 this demographic effect had been adding 60,000 or more to the labour force on an annual basis, primarily driven by net inward migration. With the decline in inward migration the demographic effect declined through 2008 and became negative in Q3 2009. In Q3 2010 this negative demographic effect contributed over 16,700 to the overall decline in the labour force.

The introduction of the new measure of part-time underemployed workers (see page 2) has a consequential impact upon the production of the broadest survey-based labour supply indicator, S3 as this measure includes those persons. The CSO has included the S3 measure based on both the new and old methods of measuring these part-time underemployed workers in table 20. The S3 measure using the new method of measuring part-time underemployed workers has increased by 1.7 percentage points from 20.9% in Q3 2009 to 22.6% in Q3 2010. Using the old method of measuring part-time underemployed workers the S3 measure has increased by 1.8 percentage points from 16.8% in Q3 2009 to 18.6% in Q3 2010. See table 20.

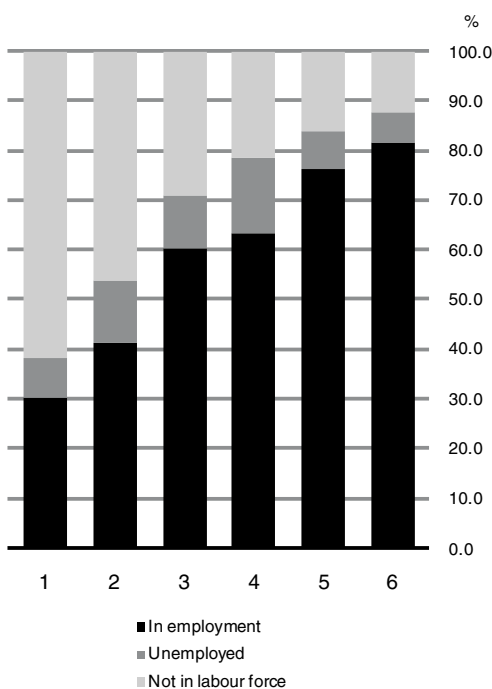
Overall participation rate continues to fall

The overall participation rate declined from 62.5% in Q3 2009 to 61.2% in Q3 2010. The male participation rate decreased from 70.9% to 69.4% in the year while the female participation rate declined from 54.3% to 53.3% over the same period.

ILO Economic Status classified by nationality, Quarter 3 2010



ILO Economic Status classified by highest level of educational attainment, Quarter 3 2010



KEY

- 1- Primary or below
- 2- Lower secondary
- 3- Higher secondary
- 4- Post leaving cert
- 5- Third level non-honours degree
- 6- Third level honours degree or above

The greatest fall in participation rates were seen among persons in the youngest age groups. See table 8, table 9 and graph opposite.

- ◆ The participation rate among 15-19 year olds fell by 2.5 percentage points from 22.7% to 20.2% over the year. The participation rate for 15-19 year olds had been 30.8% in Q3 2008;
- ◆ Among 20-24 year olds a fall of 4.8 percentage points was recorded (from 72.9% to 68.1%). The participation rate among 20-24 year olds had been 77.4% in Q3 2008;
- ◆ Participation rates increased slightly among older age groups over the year; persons aged 45-54 showed an increase of 0.2 percentage points over the year to Q3 2010, persons aged 55-59 increased by 0.8 percentage points and persons aged 60-64 increased by 0.5 percentage points.

Number of people not in the labour force grows by 2.9%

In the year to Q3 2010 the number of people defined as not in the labour force grew by 38,300 to 1,362,200 (+2.9%), while in the year to Q3 2009 the number of people not in the labour force increased by 60,700 (+4.8%). See table 1.

Non-Irish national labour force declines by 13%

Broad indicative estimates of the labour force status of non-Irish nationals are presented in the annex.

In the third quarter of 2010 the estimated number of non-Irish nationals in the labour force was 276,600, a decrease of 40,900 or 12.9% in the year. An almost identical decrease of 40,500 had been recorded in the year to Q3 2009. The number of Irish nationals in the labour force in the third quarter of 2010 was 1,874,000, a decrease of 10,800 or 0.6%. See table A1 in the annex.

According to ILO criteria, 226,400 non-Irish nationals were in employment in Q3 2010 representing a decrease of 36,400 (-13.9%) over the year. A further 50,100 were unemployed, a decrease of 4,600 in the year to Q3 2010. Nationals of the EU15 to EU27 States showed a decline in employment of 11,300 (-9.3%) and a decrease in unemployment of 2,000 (-6.8%) over the year. See table A1 in the annex and graph opposite.

In the third quarter of 2010 non-Irish nationals accounted for 12.2% of all persons aged 15 and over in employment. This compares with 13.7% in Q3 2009 and 15.4% in Q3 2008. Non-Irish nationals accounted for 27.2% of workers in Accommodation and food service activities, 20.7% in Administrative and support service activities and 16.7% in Industry. The largest decreases in employment for non-Irish nationals occurred in the Accommodation and food service activities (-7,300) and Construction (-6,200) sectors. See table A2 in the annex.

Educational Attainment

The unemployment rate among persons with a third level honours degree or above was 7.1% in Q3 2010 compared with 9.1% for persons with a third level non-honours degree and rates of 15.2% or higher among persons with lower levels of educational attainment. The participation rate among persons with a third level honours degree or above was 87.9% in Q3 2010 falling to 38.3% for persons with primary or below as their highest level of education. See table 23a and graph opposite.

Regional Comparisons

Employment fell by 26,900 (-5.4%) in the Border, Midland and Western region and by 44,000 (-3.1%) in the Southern and Eastern region in the year to the third quarter of 2010. There was an increase of 17,300 (+8.7%) in the numbers unemployed in the Southern and Eastern region while the number of unemployed persons in the Border, Midland and Western region increased by 1,900 (+2.3%). See table 7a.

The participation rate in the Border, Midland and Western region was 58.6% compared with a participation rate of 62.2% in the Southern and Eastern region. See table 7a.

At NUTS3 level, employment fell over the year in all regions with the Midland (-7.9%) and the West (-5.0%) regions showing the largest percentage decreases. This equated to an annual decrease of 8,700 in the numbers in employment in the Midland region and an annual decrease of 9,400 in the West region. All regional data is based on the location of the respondents' usual address. See table 7b.

Contents	Page no
Table 1 Persons aged 15 years and over classified by sex and ILO Economic Status	8
Table 2a Persons aged 15 years and over in employment (ILO) classified by sex and Broad NACE Rev. 2 Economic Sector	9
Table 2b Persons aged 15 years and over in employment (ILO) classified by sex and NACE Rev. 2 Economic Sector	9
Table 3 Seasonally Adjusted Series of persons aged 15 years and over classified by sex, ILO Economic Status and NACE Rev. 2 Economic Sector	10
Table 4 Persons aged 15 years and over in employment (ILO) classified by sex and occupation	11
Table 5 Persons aged 15 years and over in employment (ILO) classified by sex and usual hours of work	12
Table 6 Persons aged 15 years and over in employment (ILO) classified by employment status	13
Table 7a Persons aged 15 years and over classified by NUTS2 regions and ILO Economic Status	13
Table 7b Persons aged 15 years and over classified by NUTS3 regions and ILO Economic Status	14
Table 8 Labour force participation rates (ILO) classified by sex, age group and marital status, July-September 2010	15
Table 9 Labour force participation rates (ILO) classified by sex and age group	15
Table 10 Number of persons in the labour force (ILO) classified by sex and age group	16
Table 11 Number of persons in employment (ILO) classified by sex and age group	16
Table 12 Employment rates (ILO) for persons aged 15 to 64, classified by sex and age group	17
Table 13 Number of persons unemployed (ILO) classified by sex and age group	17
Table 14 Unemployment rates (ILO) classified by sex and age group	18
Table 15 Labour force situation of married females classified by age group	18
Table 16 Persons aged 15 years and over classified by labour force, employment, unemployment and long-term unemployment (ILO)	19
Table 17 Persons aged 15 years and over classified by sex and duration of unemployment (ILO)	20
Table 18 Persons aged 15 years and over classified by sex, age group and duration of unemployment (ILO)	20
Table 19 Persons aged 15 years and over classified by detailed ILO Economic Status	21
Table 20 Indicators of potential labour supply	22
Table 21 Persons aged 15 years and over classified by Principal Economic Status	22
Table 22 Persons aged 15 years and over classified by ILO Economic Status and by Principal Economic Status, July-September 2010	23
Table 23a Persons aged 15 to 64, classified by the highest level of education attained, ILO Economic Status and sex, July-September 2009 and 2010	24
Table 23b Persons aged 18 to 64, classified by ILO Economic Status, age, highest level of educational attainment and sex, July-September 2007, 2008, 2009 and 2010	26
Table 24 Estimated adult members of family units classified by composition of family unit, ILO Economic Status and sex, July-September 2010	27
Table 25 Labour Force Survey results classified by ILO Economic Status for persons aged 15 or over in EU member states	28

Table 1 Persons aged 15 years and over classified by sex and ILO Economic Status

'000

ILO Economic Status	Jul- Sep 08	Apr- Jun 09	Jul- Sep 09	Oct- Dec 09	Jan- Mar 10	Apr- Jun 10	Jul- Sep 10
Males							
In labour force	1,285.2	1,238.9	1,232.0	1,205.3	1,191.1	1,196.2	1,196.1
In employment:	1,182.4	1,052.0	1,040.0	1,016.2	996.3	996.1	994.5
full-time	1,085.5	943.4	923.5	898.3	881.6	880.5	877.0
part-time:	96.9	108.5	116.5	117.8	114.6	115.7	117.6
<i>of which: part-time, not underemployed¹</i>	-	-	-	-	-	-	-
<i>part-time, underemployed¹</i>	-	-	-	-	-	-	-
Unemployed:	102.8	186.9	192.0	189.1	194.9	200.1	201.5
seeking full-time work	98.8	181.1	185.7	183.8	190.6	195.5	196.1
seeking part-time work	4.0	5.8	6.3	5.3	4.2	4.6	5.4
Not in labour force	461.8	498.1	506.4	528.6	539.4	528.7	526.8
Marginally attached to the Labour Force	8.1	10.2	12.6	15.8	16.3	15.0	13.9
Others	453.7	488.0	493.9	512.8	523.1	513.7	512.9
Total males aged 15 or over	1,747.0	1,737.0	1,738.4	1,733.8	1,730.6	1,724.9	1,722.8
Unemployment rate %	8.0	15.1	15.6	15.7	16.4	16.7	16.8
Participation rate %	73.6	71.3	70.9	69.5	68.8	69.4	69.4
Females							
In labour force	981.3	964.2	970.3	949.9	941.5	956.5	954.5
In employment:	924.7	886.5	882.4	871.6	861.4	863.0	857.0
full-time	627.2	588.7	586.9	569.9	562.9	568.4	559.9
part-time:	297.5	297.8	295.6	301.6	298.5	294.6	297.1
<i>of which: part-time, not underemployed¹</i>	-	-	-	-	-	-	-
<i>part-time, underemployed¹</i>	-	-	-	-	-	-	-
Unemployed:	56.6	77.7	87.9	78.4	80.2	93.6	97.5
seeking full-time work	43.4	62.9	70.7	63.9	65.6	75.5	78.8
seeking part-time work	13.2	14.8	17.2	14.4	14.5	18.1	18.6
Not in labour force	801.4	822.6	817.5	837.2	843.9	831.0	835.4
Marginally attached to the Labour Force	6.4	5.1	7.1	6.1	7.0	6.5	8.4
Others	795.0	817.6	810.4	831.1	836.9	824.5	827.0
Total females aged 15 or over	1,782.7	1,786.8	1,787.8	1,787.2	1,785.4	1,787.5	1,789.9
Unemployment rate %	5.8	8.1	9.1	8.3	8.5	9.8	10.2
Participation rate %	55.0	54.0	54.3	53.2	52.7	53.5	53.3
All persons							
In labour force	2,266.6	2,203.1	2,202.3	2,155.2	2,132.7	2,152.7	2,150.5
In employment:	2,107.1	1,938.5	1,922.4	1,887.7	1,857.6	1,859.1	1,851.5
full-time	1,712.7	1,532.1	1,510.3	1,468.3	1,444.5	1,448.9	1,436.8
part-time:	394.4	406.4	412.1	419.5	413.1	410.2	414.7
<i>of which: part-time, not underemployed¹</i>	-	-	-	-	-	-	-
<i>part-time, underemployed¹</i>	-	-	-	-	-	-	-
Unemployed:	159.4	264.6	279.8	267.4	275.0	293.6	299.0
seeking full-time work	142.3	244.0	256.4	247.7	256.3	271.0	274.9
seeking part-time work	17.2	20.6	23.5	19.7	18.8	22.7	24.1
Not in labour force	1,263.2	1,320.8	1,323.9	1,365.8	1,383.3	1,359.7	1,362.2
Marginally attached to the Labour Force	14.5	15.2	19.7	21.9	23.3	21.4	22.3
Others	1,248.6	1,305.6	1,304.2	1,343.9	1,360.0	1,338.2	1,339.9
Total persons aged 15 or over	3,529.7	3,523.8	3,526.2	3,521.0	3,516.0	3,512.4	3,512.7
Unemployment rate %	7.0	12.0	12.7	12.4	12.9	13.6	13.9
Participation rate %	64.2	62.5	62.5	61.2	60.7	61.3	61.2

¹ The data series on part-time underemployed and not underemployed persons has been revised as per text on page 3 and Background Notes. Data is available on page 4.

Table 2a Persons aged 15 years and over in employment (ILO) classified by sex and Broad NACE Rev. 2 Economic Sector

	'000						
Broad economic sector (NACE Rev. 2)	Jul- Sep 08	Apr- Jun 09	Jul- Sep 09	Oct- Dec 09	Jan- Mar 10	Apr- Jun 10	Jul- Sep 10
Males							
A Agriculture	98.9	87.3	86.7	81.2	72.7	75.4	80.2
B-F Industry	429.9	328.3	320.9	304.9	295.5	288.2	280.4
G-U Services	653.5	636.4	632.4	630.1	628.2	632.6	634.0
Females							
A Agriculture	12.8	9.9	9.2	8.3	8.0	9.5	9.3
B-F Industry	95.5	85.5	82.7	78.7	76.0	77.2	75.3
G-U Services	816.4	791.0	790.6	784.6	777.4	776.2	772.4
All persons							
A Agriculture	111.7	97.2	95.9	89.5	80.6	84.9	89.5
B-F Industry	525.4	413.8	403.6	383.6	371.5	365.4	355.7
G-U Services	1,469.9	1,427.5	1,423.0	1,414.6	1,405.6	1,408.7	1,406.3
Total persons	2,107.1	1,938.5	1,922.4	1,887.7	1,857.6	1,859.1	1,851.5

Table 2b Persons aged 15 years and over in employment (ILO) classified by sex and NACE Rev. 2 Economic Sector

	'000						
Economic sector (NACE Rev. 2)	Jul- Sep 08	Apr- Jun 09	Jul- Sep 09	Oct- Dec 09	Jan- Mar 10	Apr- Jun 10	Jul- Sep 10
Males							
A Agriculture, forestry and fishing	98.9	87.3	86.7	81.2	72.7	75.4	80.2
B-E Industry	210.8	184.3	179.6	178.4	176.7	173.0	172.8
F Construction	219.1	143.9	141.2	126.5	118.8	115.2	107.5
G Wholesale and retail trade; repair of motor vehicles and motorcycles	146.5	134.2	130.6	128.8	131.1	135.7	136.0
H Transportation and storage	78.0	78.1	79.3	76.0	75.4	73.0	75.4
I Accommodation and food service activities	55.1	54.5	55.6	55.5	55.9	54.1	53.1
J Information and communication	49.0	51.0	50.1	50.3	52.6	51.5	50.9
K-L Financial, insurance and real estate activities	44.7	48.3	47.8	49.8	48.6	50.0	49.4
M Professional, scientific and technical activities	66.8	63.4	62.3	62.4	60.5	59.7	57.5
N Administrative and support service activities	38.1	33.3	33.2	30.2	29.2	30.7	31.6
O Public administration and defence; compulsory social security	53.0	53.0	52.9	54.5	53.3	55.7	54.9
P Education	37.3	39.9	37.8	39.2	40.3	39.7	38.5
Q Human health and social work activities	38.4	41.2	40.7	42.7	42.1	42.6	43.9
R-U Other NACE activities	46.7	39.6	42.1	40.7	39.2	39.9	42.9
Total males	1,182.4	1,052.0	1,040.0	1,016.2	996.3	996.1	994.5
Females							
A Agriculture, forestry and fishing	12.8	9.9	9.2	8.3	8.0	9.5	9.3
B-E Industry	82.3	74.0	72.5	68.5	65.7	67.2	68.1
F Construction	13.2	11.5	10.3	10.2	10.3	10.1	7.2
G Wholesale and retail trade; repair of motor vehicles and motorcycles	156.8	143.5	141.2	136.8	135.7	133.4	133.7
H Transportation and storage	16.9	16.5	16.8	17.2	17.5	16.7	16.5
I Accommodation and food service activities	77.0	65.4	67.7	65.0	67.8	65.7	69.5
J Information and communication	21.5	22.5	22.4	22.2	21.5	22.6	22.4
K-L Financial, insurance and real estate activities	59.9	60.5	61.8	56.6	54.9	53.2	50.0
M Professional, scientific and technical activities	44.7	39.2	38.9	41.5	41.4	41.2	38.9
N Administrative and support service activities	38.2	32.7	34.0	32.0	29.8	30.6	28.4
O Public administration and defence; compulsory social security	53.6	54.7	52.5	52.7	52.6	52.1	50.0
P Education	101.3	110.5	101.4	108.7	107.3	110.1	110.5
Q Human health and social work activities	182.4	186.6	192.8	191.1	189.9	192.3	193.3
R-U Other NACE activities	64.0	59.1	61.1	60.7	59.0	58.2	59.1
Total females	924.7	886.5	882.4	871.6	861.4	863.0	857.0
All persons							
A Agriculture, forestry and fishing	111.7	97.2	95.9	89.5	80.6	84.9	89.5
B-E Industry	293.2	258.3	252.1	246.9	242.4	240.1	240.9
F Construction	232.3	155.4	151.5	136.7	129.1	125.3	114.7
G Wholesale and retail trade; repair of motor vehicles and motorcycles	303.2	277.7	271.8	265.6	266.8	269.1	269.7
H Transportation and storage	94.9	94.6	96.1	93.2	92.8	89.7	91.9
I Accommodation and food service activities	132.1	119.8	123.3	120.4	123.7	119.8	122.6
J Information and communication	70.5	73.5	72.5	72.5	74.1	74.1	73.3
K-L Financial, insurance and real estate activities	104.6	108.7	109.6	106.4	103.5	103.2	99.3
M Professional, scientific and technical activities	111.5	102.6	101.2	103.9	101.9	100.9	96.4
N Administrative and support service activities	76.4	65.9	67.2	62.2	59.1	61.3	60.0
O Public administration and defence; compulsory social security	106.6	107.7	105.3	107.2	106.0	107.8	104.9
P Education	138.6	150.4	139.2	148.0	147.5	149.8	149.0
Q Human health and social work activities	220.8	227.8	233.5	233.7	232.0	234.9	237.2
R-U Other NACE activities	110.7	98.7	103.3	101.4	98.2	98.1	102.0
Total persons	2,107.1	1,938.5	1,922.4	1,887.7	1,857.6	1,859.1	1,851.5

**Table 3 Seasonally Adjusted Series¹ of persons aged 15 years and over classified by sex,
ILO Economic Status and NACE Rev. 2 Economic Sector**

ILO Economic Status/ NACE Rev. 2 Economic Sector	Jul- Sep 08	Apr- Jun 09	Jul- Sep 09	Oct- Dec 09	Jan- Mar 10	Apr- Jun 10	Jul- Sep 10
Males							
In labour force	1,272.8	1,238.9	1,220.6	1,207.9	1,200.2	1,195.4	1,185.4
In employment:	1,170.9	1,054.8	1,030.2	1,014.8	1,004.8	998.5	985.4
A Agriculture, forestry and fishing	96.5	88.7	84.3	80.5	74.3	76.7	77.8
B-E Industry	207.9	184.6	177.7	178.0	178.6	173.2	171.3
F Construction	216.4	144.6	139.5	126.0	120.2	115.7	106.3
G Wholesale and retail trade; repair of motor vehicles and motorcycles	146.2	133.0	130.5	129.8	131.5	134.2	135.9
H Transportation and storage	76.9	78.6	78.0	76.2	76.0	73.5	74.0
I Accommodation and food service activities	54.3	54.9	54.7	56.6	55.3	54.5	52.3
J Information and communication	50.2	50.7	51.2	50.4	51.6	51.2	51.9
K-L Financial, insurance and real estate activities	44.5	48.0	47.9	49.2	49.4	49.7	49.6
M Professional, scientific and technical activities	67.1	63.3	62.6	62.0	60.8	59.5	57.8
N Administrative and support service activities	36.9	33.0	32.1	30.7	30.1	30.4	30.5
O Public administration and defence; compulsory social security	52.8	53.3	52.8	54.4	53.3	55.9	54.9
P Education	39.2	39.3	39.6	38.5	39.8	39.2	40.2
Q Human health and social work activities	38.2	41.2	40.5	42.0	42.9	42.7	43.8
R-U Other NACE activities	45.4	40.4	40.7	40.8	39.8	40.7	41.3
Unemployed	101.0	182.0	188.8	199.2	194.0	194.4	198.2
Unemployment rate %	7.9	14.7	15.5	16.4	16.2	16.2	16.7
Participation rate %	72.9	71.2	70.2	69.7	69.4	69.3	68.8
Females							
In labour force	971.3	960.4	960.4	954.2	951.3	952.1	944.7
In employment:	919.4	885.7	877.8	871.3	867.1	861.9	852.8
A Agriculture, forestry and fishing	12.7	9.6	9.1	8.4	8.2	9.2	9.2
B-E Industry	80.3	73.8	70.5	70.0	66.4	67.0	66.2
F Construction	13.5	10.9	10.6	10.2	10.5	9.5	7.5
G Wholesale and retail trade; repair of motor vehicles and motorcycles	155.3	144.8	140.1	137.1	135.3	134.5	132.7
H Transportation and storage	17.1	16.5	17.0	17.5	17.0	16.7	16.7
I Accommodation and food service activities	74.8	66.0	65.5	66.4	67.9	66.4	67.2
J Information and communication	21.6	22.0	22.4	22.3	21.9	22.1	22.4
K-L Financial, insurance and real estate activities	60.0	60.4	62.1	55.3	56.1	53.0	50.3
M Professional, scientific and technical activities	44.9	38.8	39.3	41.0	41.9	40.7	39.4
N Administrative and support service activities	37.5	32.5	33.4	32.4	30.1	30.4	27.9
O Public administration and defence; compulsory social security	53.1	54.3	52.3	52.6	53.4	51.5	50.1
P Education	105.9	109.0	105.8	106.2	107.0	108.5	115.1
Q Human health and social work activities	181.0	187.5	191.3	190.7	191.0	193.2	191.7
R-U Other NACE activities	63.3	60.0	60.5	60.0	59.4	59.2	58.5
Unemployed	52.5	74.8	81.5	84.2	84.3	90.2	90.3
Unemployment rate %	5.4	7.8	8.5	8.8	8.9	9.5	9.6
Participation rate %	54.5	53.7	53.8	53.5	53.2	53.2	52.8
All persons							
In labour force	2,243.8	2,198.0	2,180.5	2,163.0	2,152.6	2,146.1	2,129.5
In employment:	2,090.4	1,941.8	1,908.1	1,885.7	1,870.5	1,861.9	1,838.4
A Agriculture, forestry and fishing	109.1	98.1	93.6	88.4	83.1	85.6	87.3
B-E Industry	288.2	258.6	248.1	247.4	245.4	240.3	237.4
F Construction	229.8	155.7	150.1	136.2	130.6	125.4	113.8
G Wholesale and retail trade; repair of motor vehicles and motorcycles	301.0	278.3	270.2	266.7	266.7	269.4	268.3
H Transportation and storage	93.8	95.0	94.9	93.8	92.9	90.2	90.7
I Accommodation and food service activities	129.0	120.6	120.2	123.2	123.2	120.7	119.4
J Information and communication	71.4	72.6	73.3	73.2	73.6	73.2	74.0
K-L Financial, insurance and real estate activities	103.9	108.3	109.2	105.0	105.9	102.6	99.1
M Professional, scientific and technical activities	111.7	102.6	101.6	102.8	102.7	100.7	97.0
N Administrative and support service activities	74.6	65.7	65.7	63.0	60.0	61.0	58.7
O Public administration and defence; compulsory social security	105.9	107.4	104.9	106.9	107.1	107.2	104.9
P Education	145.0	148.8	145.3	144.6	146.3	148.4	155.3
Q Human health and social work activities	219.0	228.7	231.7	232.8	233.9	235.7	235.4
R-U Other NACE activities	108.2	100.5	100.8	101.0	99.4	99.9	99.4
Unemployed	153.4	256.6	269.6	284.4	277.5	284.7	288.5
Unemployment rate %	6.8	11.6	12.4	13.1	12.9	13.2	13.6
Participation rate %	63.6	62.3	61.9	61.5	61.2	61.1	60.6

¹ See Background Notes.

Table 4 Persons aged 15 years and over in employment (ILO) classified by sex and occupation

'000

Broad occupational group	Jul-Sep 08	Apr-Jun 09	Jul-Sep 09	Oct-Dec 09	Jan-Mar 10	Apr-Jun 10	Jul-Sep 10
Males							
1. Managers and administrators	220.6	219.1	217.6	212.6	202.3	207.6	206.4
2. Professional	125.0	122.4	121.2	125.5	127.5	125.3	119.4
3. Associate professional and technical	82.3	81.2	80.0	83.1	82.0	80.7	83.2
4. Clerical and secretarial	63.6	59.4	59.1	59.8	60.0	61.2	60.1
5. Craft and related	266.8	202.4	199.0	181.4	178.1	173.5	165.8
6. Personal and protective service	92.7	88.5	89.2	86.1	85.8	87.7	86.9
7. Sales	68.0	64.7	66.3	66.2	66.8	65.6	66.5
8. Plant and machine operatives	148.3	118.5	119.5	117.1	113.7	113.1	115.5
9. Other	115.0	95.8	88.1	84.4	80.1	81.3	90.6
Total males	1,182.4	1,052.0	1,040.0	1,016.2	996.3	996.1	994.5
Females							
1. Managers and administrators	111.4	104.1	110.0	105.3	105.2	105.8	102.1
2. Professional	120.2	123.6	121.1	126.5	124.6	131.7	131.0
3. Associate professional and technical	111.2	111.1	113.7	111.8	112.1	113.3	111.8
4. Clerical and secretarial	197.9	187.4	182.6	182.8	183.4	180.5	169.3
5. Craft and related	12.9	8.2	8.6	9.2	9.3	9.8	10.1
6. Personal and protective service	158.7	153.5	156.7	151.7	150.1	143.3	150.2
7. Sales	113.2	106.4	104.2	101.6	98.0	95.7	98.0
8. Plant and machine operatives	26.3	21.7	21.6	20.7	19.6	21.2	23.4
9. Other	72.8	70.4	63.8	62.0	58.9	61.7	60.9
Total females	924.7	886.5	882.4	871.6	861.4	863.0	857.0
All persons							
1. Managers and administrators	332.0	323.2	327.6	317.9	307.5	313.4	308.6
2. Professional	245.2	246.0	242.3	252.0	252.1	257.0	250.5
3. Associate professional and technical	193.6	192.3	193.7	194.8	194.1	194.0	195.1
4. Clerical and secretarial	261.5	246.8	241.8	242.6	243.4	241.7	229.4
5. Craft and related	279.8	210.6	207.6	190.7	187.5	183.3	176.0
6. Personal and protective service	251.4	242.0	245.9	237.8	235.9	231.1	237.1
7. Sales	181.2	171.1	170.5	167.8	164.9	161.3	164.5
8. Plant and machine operatives	174.7	140.2	141.1	137.8	133.3	134.3	138.9
9. Other	187.8	166.2	151.9	146.4	139.0	143.0	151.5
Total persons	2,107.1	1,938.5	1,922.4	1,887.7	1,857.6	1,859.1	1,851.5

Table 5 Persons aged 15 years and over in employment (ILO) classified by sex and usual hours of work

'000

Usual hours of work per week	Jul-Sep 08	Apr-Jun 09	Jul-Sep 09	Oct-Dec 09	Jan-Mar 10	Apr-Jun 10	Jul-Sep 10
Males							
1-9 hours	6.0	9.1	8.1	9.0	10.6	8.6	8.5
10-19	20.3	23.4	25.5	27.5	25.4	26.0	25.7
20-29	54.2	60.7	61.9	62.5	61.8	64.3	63.2
30-34	25.9	27.6	28.2	26.2	26.3	24.2	25.4
35-39	411.9	357.2	349.7	338.0	339.3	330.2	335.3
40-44	295.8	242.1	238.1	240.4	229.3	232.8	231.4
45 & over	193.1	153.3	157.5	150.2	142.8	147.9	147.9
Variable hours ¹	175.3	178.4	171.1	162.3	160.8	162.2	157.0
Total males	1,182.4	1,052.0	1,040.0	1,016.2	996.3	996.1	994.5
<i>Average hours per week</i>	<i>40.4</i>	<i>39.5</i>	<i>39.7</i>	<i>39.4</i>	<i>39.3</i>	<i>39.4</i>	<i>39.4</i>
Females							
1-9 hours	22.6	26.7	23.8	26.2	28.4	25.7	27.2
10-19	89.6	96.9	96.5	98.5	95.9	97.8	95.7
20-29	189.1	187.5	183.4	184.7	179.7	180.1	181.0
30-34	72.6	70.3	66.3	65.7	67.6	68.4	66.1
35-39	342.8	322.1	325.3	309.0	308.2	299.4	300.1
40-44	120.8	99.7	101.3	102.8	96.2	102.4	100.3
45 & over	28.5	26.1	29.0	27.8	26.4	29.3	29.5
Variable hours ¹	58.7	57.2	56.7	57.0	59.1	59.9	57.0
Total females	924.7	886.5	882.4	871.6	861.4	863	857.0
<i>Average hours per week</i>	<i>31.6</i>	<i>30.8</i>	<i>31.1</i>	<i>30.8</i>	<i>30.7</i>	<i>30.9</i>	<i>30.9</i>
All persons							
1-9 hours	28.6	35.9	31.9	35.1	39.0	34.3	35.7
10-19	109.9	120.4	122.1	126.1	121.2	123.8	121.4
20-29	243.3	248.2	245.2	247.2	241.5	244.3	244.2
30-34	98.5	98.0	94.5	91.9	93.9	92.6	91.5
35-39	754.7	679.3	675.0	647.0	647.5	629.6	635.5
40-44	416.6	341.8	339.5	343.2	325.4	335.2	331.8
45 & over	221.6	179.4	186.5	177.9	169.2	177.2	177.4
Variable hours ¹	234.0	235.6	227.7	219.3	219.9	222.1	214.0
Total persons	2,107.1	1,938.5	1,922.4	1,887.7	1,857.6	1,859.1	1,851.5
<i>Average hours per week</i>	<i>36.3</i>	<i>35.3</i>	<i>35.5</i>	<i>35.2</i>	<i>35.1</i>	<i>35.2</i>	<i>35.3</i>

¹ Includes 'not stated'.

Table 6 Persons aged 15 years and over in employment (ILO) classified by employment status

'000

Employment status	Jul-Sep 08	Apr-Jun 09	Jul-Sep 09	Oct-Dec 09	Jan-Mar 10	Apr-Jun 10	Jul-Sep 10
Males							
Self employed (with paid employees)	97.0	88.1	85.6	83.0	79.6	78.0	74.5
Self employed (with no paid employees)	190.0	183.4	183.5	180.9	168.4	169.4	169.9
Employee	887.5	773.5	762.5	745.7	742.0	741.0	743.3
Assisting relative	7.9	7.0	8.3	6.6	6.4	7.7	6.9
Total males	1,182.4	1,052.0	1,040.0	1,016.2	996.3	996.1	994.5
Females							
Self employed (with paid employees)	21.9	22.3	22.5	22.1	21.0	20.9	21.5
Self employed (with no paid employees)	40.2	36.2	36.8	37.2	38.8	38.4	38.6
Employee	855.0	820.6	814.7	804.9	793.9	795.9	791.5
Assisting relative	7.7	7.4	8.5	7.3	7.6	7.8	5.4
Total females	924.7	886.5	882.4	871.6	861.4	863.0	857.0
All persons							
Self employed (with paid employees)	118.9	110.4	108.1	105.1	100.6	98.9	96.0
Self employed (with no paid employees)	230.2	219.6	220.3	218.1	207.2	207.8	208.5
Employee	1,742.5	1,594.0	1,577.3	1,550.7	1,535.9	1,536.9	1,534.8
Assisting relative	15.6	14.4	16.8	13.9	14.0	15.5	12.3
Total persons	2,107.1	1,938.5	1,922.4	1,887.7	1,857.6	1,859.1	1,851.5

Table 7a Persons aged 15 years and over classified by NUTS2 regions¹ and ILO Economic Status

Region (NUTS2)	In employment	Unemployed	In labour force	Unemployment rate	Participation rate
	'000	'000	'000	%	%
Border, Midland and Western					
Jul-Sep 2008	537.1	46.5	583.6	8.0	62.2
Apr-Jun 2009	496.5	77.6	574.1	13.5	60.7
Jul-Sep 2009	495.4	81.5	577.0	14.1	60.9
Oct-Dec 2009	482.5	73.7	556.2	13.2	58.6
Jan-Mar 2010	480.1	70.8	550.9	12.8	58.0
Apr-Jun 2010	472.9	78.1	551.0	14.2	58.6
Jul-Sep 2010	468.5	83.4	551.9	15.1	58.6
Southern and Eastern					
Jul-Sep 2008	1,570.0	112.9	1,682.9	6.7	65.0
Apr-Jun 2009	1,441.9	187.0	1,628.9	11.5	63.2
Jul-Sep 2009	1,427.0	198.3	1,625.3	12.2	63.0
Oct-Dec 2009	1,405.2	193.8	1,599.0	12.1	62.2
Jan-Mar 2010	1,377.6	204.3	1,581.8	12.9	61.6
Apr-Jun 2010	1,386.2	215.5	1,601.7	13.5	62.3
Jul-Sep 2010	1,383.0	215.6	1,598.6	13.5	62.2
State					
Jul-Sep 2008	2,107.1	159.4	2,266.6	7.0	64.2
Apr-Jun 2009	1,938.5	264.6	2,203.1	12.0	62.5
Jul-Sep 2009	1,922.4	279.8	2,202.3	12.7	62.5
Oct-Dec 2009	1,887.7	267.4	2,155.2	12.4	61.2
Jan-Mar 2010	1,857.6	275.0	2,132.7	12.9	60.7
Apr-Jun 2010	1,859.1	293.6	2,152.7	13.6	61.3
Jul-Sep 2010	1,851.5	299.0	2,150.5	13.9	61.2

¹ See Background Notes.

Table 7b Persons aged 15 years and over classified by NUTS3 regions¹ and ILO Economic Status

Region (NUTS3)		In employment	Unemployed	In labour force	Unemployment rate	Participation rate
		'000	'000	'000	%	%
Border	Jul-Sep 2008	213.9	18.9	232.8	8.1	59.9
	Apr-Jun 2009	194.6	30.0	224.6	13.4	57.2
	Jul-Sep 2009	196.8	31.9	228.7	14.0	58.1
	Oct-Dec 2009	188.8	28.9	217.7	13.3	55.2
	Jan-Mar 2010	187.8	23.6	211.5	11.2	53.8
	Apr-Jun 2010	187.3	28.7	216.0	13.3	55.4
	Jul-Sep 2010	188.1	29.5	217.5	13.5	55.6
Midland	Jul-Sep 2008	120.1	11.5	131.6	8.7	63.0
	Apr-Jun 2009	108.6	18.4	127.0	14.5	60.7
	Jul-Sep 2009	109.9	18.9	128.8	14.7	61.3
	Oct-Dec 2009	108.2	18.3	126.5	14.4	60.1
	Jan-Mar 2010	108.2	18.9	127.1	14.8	60.1
	Apr-Jun 2010	102.8	17.5	120.3	14.5	57.4
	Jul-Sep 2010	101.2	21.1	122.3	17.3	58.5
West	Jul-Sep 2008	203.1	16.2	219.3	7.4	64.2
	Apr-Jun 2009	193.4	29.2	222.5	13.1	64.7
	Jul-Sep 2009	188.7	30.7	219.4	14.0	63.9
	Oct-Dec 2009	185.5	26.5	212.0	12.5	61.7
	Jan-Mar 2010	184.0	28.3	212.3	13.3	61.5
	Apr-Jun 2010	182.8	32.0	214.7	14.9	63.1
	Jul-Sep 2010	179.3	32.8	212.1	15.5	62.2
Dublin	Jul-Sep 2008	616.6	43.1	659.7	6.5	66.5
	Apr-Jun 2009	561.7	64.6	626.3	10.3	64.1
	Jul-Sep 2009	553.4	68.5	621.9	11.0	63.7
	Oct-Dec 2009	550.4	66.9	617.4	10.8	63.5
	Jan-Mar 2010	540.3	66.9	607.2	11.0	62.8
	Apr-Jun 2010	535.6	69.5	605.2	11.5	62.6
	Jul-Sep 2010	531.5	70.9	602.5	11.8	62.6
Mid-East	Jul-Sep 2008	250.0	15.4	265.4	5.8	66.4
	Apr-Jun 2009	236.2	28.5	264.7	10.8	65.9
	Jul-Sep 2009	234.7	31.9	266.5	12.0	66.1
	Oct-Dec 2009	235.0	30.3	265.4	11.4	65.8
	Jan-Mar 2010	230.9	34.8	265.7	13.1	65.9
	Apr-Jun 2010	232.9	34.6	267.5	12.9	65.9
	Jul-Sep 2010	234.1	31.6	265.7	11.9	65.2
Mid-West	Jul-Sep 2008	167.1	14.9	181.9	8.2	61.3
	Apr-Jun 2009	156.8	23.4	180.2	13.0	61.0
	Jul-Sep 2009	153.6	24.5	178.2	13.8	60.7
	Oct-Dec 2009	152.5	25.2	177.7	14.2	60.9
	Jan-Mar 2010	147.9	25.9	173.7	14.9	59.5
	Apr-Jun 2010	149.9	29.2	179.0	16.3	60.7
	Jul-Sep 2010	151.1	29.6	180.7	16.4	61.2
South-East	Jul-Sep 2008	226.3	18.2	244.5	7.5	63.3
	Apr-Jun 2009	203.5	35.1	238.6	14.7	61.3
	Jul-Sep 2009	202.5	36.1	238.6	15.1	61.2
	Oct-Dec 2009	194.0	36.2	230.2	15.7	59.0
	Jan-Mar 2010	189.8	39.9	229.7	17.4	58.7
	Apr-Jun 2010	192.2	42.6	234.9	18.1	59.9
	Jul-Sep 2010	194.0	41.4	235.4	17.6	59.8
South-West	Jul-Sep 2008	310.1	21.3	331.4	6.4	64.2
	Apr-Jun 2009	283.7	35.4	319.1	11.1	61.9
	Jul-Sep 2009	282.9	37.2	320.1	11.6	62.0
	Oct-Dec 2009	273.3	35.1	308.5	11.4	59.9
	Jan-Mar 2010	268.7	36.8	305.5	12.1	59.6
	Apr-Jun 2010	275.6	39.6	315.2	12.6	61.4
	Jul-Sep 2010	272.2	42.1	314.3	13.4	61.3
State	Jul-Sep 2008	2,107.1	159.4	2,266.6	7.0	64.2
	Apr-Jun 2009	1,938.5	264.6	2,203.1	12.0	62.5
	Jul-Sep 2009	1,922.4	279.8	2,202.3	12.7	62.5
	Oct-Dec 2009	1,887.7	267.4	2,155.2	12.4	61.2
	Jan-Mar 2010	1,857.6	275.0	2,132.7	12.9	60.7
	Apr-Jun 2010	1,859.1	293.6	2,152.7	13.6	61.3
	Jul-Sep 2010	1,851.5	299.0	2,150.5	13.9	61.2

¹ See Background Notes.

Table 8 Labour force participation rates (ILO) classified by sex, age group and marital status, July - September 2010

%

Marital status	Age group								Total
	15-19	20-24	25-34	35-44	45-54	55-59	60-64	65+	
Males									
Single	20.6	70.3	88.5	82.9	71.2	61.3	45.5	16.3	65.7
Married	*	85.1	94.9	94.7	91.4	77.5	59.6	14.6	74.7
Separated or divorced	*	*	82.1	88.4	81.7	66.1	43.5	17.1	68.6
Widowed	*	*	*	*	69.2	66.0	41.7	7.2	20.9
Total males	20.6	70.5	90.5	91.3	87.4	74.1	56.2	13.9	69.4
Females									
Single	19.8	66.2	79.8	72.5	74.8	60.5	38.9	6.3	60.1
Married	*	57.1	73.5	66.6	66.7	55.9	32.8	5.9	54.9
Separated or divorced	*	*	63.3	65.9	74.1	55.4	40.0	*	58.3
Widowed	*	*	*	*	67.8	50.8	28.1	1.8	10.4
Total females	19.8	65.8	77.1	67.7	68.6	56.1	33.4	4.2	53.3
All persons									
Single	20.2	68.2	84.3	78.1	72.9	60.9	42.8	11.8	63.0
Married	*	64.4	82.9	80.8	79.3	67.0	46.9	10.7	64.9
Separated or divorced	*	*	68.7	73.0	77.3	59.7	41.4	11.3	62.3
Widowed	*	*	*	47.5	68.1	56.0	31.5	2.9	12.7
Total persons	20.2	68.1	83.6	79.6	78.0	65.1	44.8	8.6	61.2

* Population estimates of less than 1,000 are deemed too small for publication purposes due to reliability concerns. Sampling or other survey errors are greater in respect of smaller values or estimates of change.

Table 9 Labour force participation rates (ILO) classified by sex and age group

%

	Age group								Total
	15-19	20-24	25-34	35-44	45-54	55-59	60-64	65+	
Males									
Jul-Sep 2008	30.5	83.1	92.3	92.7	89.2	77.2	59.5	16.4	73.6
Apr-Jun 2009	23.2	76.4	91.6	92.4	87.6	76.5	57.2	14.9	71.3
Jul-Sep 2009	23.7	75.7	91.4	91.3	88.0	75.0	56.8	14.7	70.9
Oct-Dec 2009	20.6	71.4	90.4	91.0	87.1	73.1	55.8	14.1	69.5
Jan-Mar 2010	16.6	68.8	89.6	91.1	87.3	72.7	56.4	14.3	68.8
Apr-Jun 2010	18.4	71.3	90.6	91.7	86.9	74.2	55.2	14.0	69.4
Jul-Sep 2010	20.6	70.5	90.5	91.3	87.4	74.1	56.2	13.9	69.4
Females									
Jul-Sep 2008	31.2	71.8	78.3	69.1	66.3	51.1	34.0	4.3	55.0
Apr-Jun 2009	20.8	70.9	77.9	69.0	66.7	52.1	32.1	4.3	54.0
Jul-Sep 2009	21.7	70.2	78.3	69.7	67.6	53.5	31.7	4.2	54.3
Oct-Dec 2009	17.1	67.8	77.4	68.6	67.8	52.6	31.1	4.0	53.2
Jan-Mar 2010	13.8	62.4	77.8	68.5	68.0	54.0	32.1	4.7	52.7
Apr-Jun 2010	15.9	66.6	77.7	68.9	68.3	56.0	33.3	4.6	53.5
Jul-Sep 2010	19.8	65.8	77.1	67.7	68.6	56.1	33.4	4.2	53.3
All persons									
Jul-Sep 2008	30.8	77.4	85.3	81.0	77.8	64.2	46.8	9.7	64.2
Apr-Jun 2009	22.1	73.6	84.7	80.8	77.2	64.4	44.7	9.1	62.5
Jul-Sep 2009	22.7	72.9	84.8	80.6	77.8	64.3	44.3	8.9	62.5
Oct-Dec 2009	18.9	69.5	83.9	79.9	77.5	62.9	43.5	8.5	61.2
Jan-Mar 2010	15.3	65.5	83.6	79.9	77.7	63.4	44.3	9.0	60.7
Apr-Jun 2010	17.2	68.9	84.0	80.3	77.6	65.2	44.3	8.8	61.3
Jul-Sep 2010	20.2	68.1	83.6	79.6	78.0	65.1	44.8	8.6	61.2

Table 10 Number of persons in the labour force (ILO) classified by sex and age group

'000

	Age group								Total
	15-19	20-24	25-34	35-44	45-54	55-59	60-64	65+	
Males									
Jul-Sep 2008	43.9	136.5	365.2	307.5	245.3	90.7	60.6	35.6	1,285.2
Apr-Jun 2009	32.9	113.6	357.5	307.3	243.8	90.9	59.7	33.2	1,238.9
Jul-Sep 2009	33.6	111.3	355.1	304.1	246.2	89.1	59.6	33.0	1,232.0
Oct-Dec 2009	29.1	101.9	348.4	302.9	244.9	87.4	58.9	31.8	1,205.3
Jan-Mar 2010	23.3	95.1	343.4	303.9	246.1	87.0	59.9	32.5	1,191.1
Apr-Jun 2010	25.6	95.0	343.3	305.8	246.3	89.2	59.0	32.0	1,196.2
Jul-Sep 2010	28.6	92.5	339.8	304.6	248.7	89.4	60.4	32.1	1,196.1
Females									
Jul-Sep 2008	43.5	119.8	307.8	224.2	181.0	59.1	34.2	11.7	981.3
Apr-Jun 2009	28.6	110.9	307.5	226.4	185.0	60.9	33.2	11.7	964.2
Jul-Sep 2009	29.7	108.5	307.5	228.8	188.4	62.8	33.0	11.6	970.3
Oct-Dec 2009	23.3	103.3	302.4	225.5	189.8	62.1	32.7	11.0	949.9
Jan-Mar 2010	18.8	92.6	302.3	225.4	191.2	64.1	33.9	13.2	941.5
Apr-Jun 2010	21.4	94.9	304.2	227.8	193.1	66.7	35.4	13.0	956.5
Jul-Sep 2010	26.6	91.7	301.7	224.8	194.9	67.1	35.8	11.9	954.5
All persons									
Jul-Sep 2008	87.4	256.3	673.1	531.7	426.2	149.8	94.7	47.3	2,266.6
Apr-Jun 2009	61.5	224.5	664.9	533.7	428.8	151.8	92.9	45.0	2,203.1
Jul-Sep 2009	63.3	219.8	662.6	532.9	434.6	152.0	92.6	44.5	2,202.3
Oct-Dec 2009	52.3	205.2	650.7	528.4	434.7	149.5	91.6	42.8	2,155.2
Jan-Mar 2010	42.0	187.7	645.7	529.3	437.2	151.2	93.8	45.7	2,132.7
Apr-Jun 2010	46.9	189.9	647.5	533.6	439.4	155.9	94.4	45.0	2,152.7
Jul-Sep 2010	55.2	184.2	641.5	529.4	443.6	156.5	96.1	44.0	2,150.5

Table 11 Number of persons in employment (ILO) classified by sex and age group

'000

	Age group								Total
	15-19	20-24	25-34	35-44	45-54	55-59	60-64	65+	
Males									
Jul-Sep 2008	35.3	113.6	335.1	286.9	230.7	86.6	58.8	35.3	1,182.4
Apr-Jun 2009	19.8	79.3	293.2	269.5	218.5	83.9	54.9	32.9	1,052.0
Jul-Sep 2009	21.2	76.1	288.9	267.0	218.2	81.2	55.0	32.6	1,040.0
Oct-Dec 2009	17.5	69.0	285.2	262.4	217.5	79.5	53.8	31.4	1,016.2
Jan-Mar 2010	15.5	63.5	278.0	259.9	214.8	79.0	53.7	31.8	996.3
Apr-Jun 2010	14.8	63.8	278.6	261.3	213.3	79.8	52.9	31.7	996.1
Jul-Sep 2010	17.4	63.2	274.1	259.9	215.0	80.1	53.3	31.5	994.5
Females									
Jul-Sep 2008	35.7	106.5	291.3	214.2	175.0	57.2	33.2	11.7	924.7
Apr-Jun 2009	19.4	93.5	282.6	211.6	176.7	58.5	32.7	11.5	886.5
Jul-Sep 2009	20.8	90.6	280.1	210.9	177.0	59.4	32.0	11.5	882.4
Oct-Dec 2009	17.4	86.8	278.1	208.9	178.8	59.1	31.5	11.0	871.6
Jan-Mar 2010	13.9	77.5	276.3	207.7	180.8	60.0	32.2	12.9	861.4
Apr-Jun 2010	13.1	77.2	274.3	208.3	180.6	63.0	34.0	12.5	863.0
Jul-Sep 2010	17.7	74.0	272.3	203.2	181.3	62.6	34.2	11.7	857.0
All persons									
Jul-Sep 2008	71.0	220.1	626.4	501.1	405.7	143.7	92.1	47.0	2,107.1
Apr-Jun 2009	39.1	172.8	575.8	481.1	395.2	142.4	87.6	44.5	1,938.5
Jul-Sep 2009	42.0	166.7	569.0	478.0	395.2	140.6	87.0	44.1	1,922.4
Oct-Dec 2009	34.9	155.8	563.3	471.2	396.2	138.6	85.2	42.3	1,887.7
Jan-Mar 2010	29.4	141.0	554.3	467.6	395.6	139.1	85.9	44.8	1,857.6
Apr-Jun 2010	27.9	141.0	552.9	469.6	393.9	142.7	86.8	44.3	1,859.1
Jul-Sep 2010	35.1	137.2	546.4	463.1	396.3	142.7	87.5	43.2	1,851.5

Table 12 Employment rates¹ (ILO) for persons aged 15 to 64, classified by sex and age group

%

	Age group							Total 15-64
	15-19	20-24	25-34	35-44	45-54	55-59	60-64	
Males								
Jul-Sep 2008	24.5	69.2	84.7	86.5	83.9	73.7	57.8	75.0
Apr-Jun 2009	13.9	53.3	75.1	81.1	78.5	70.7	52.6	67.3
Jul-Sep 2009	15.0	51.7	74.3	80.2	78.0	68.3	52.4	66.5
Oct-Dec 2009	12.4	48.3	74.0	78.8	77.3	66.5	50.9	65.3
Jan-Mar 2010	11.1	45.9	72.5	77.9	76.2	66.0	50.6	64.2
Apr-Jun 2010	10.6	47.8	73.5	78.3	75.3	66.4	49.5	64.5
Jul-Sep 2010	12.5	48.2	73.0	77.9	75.6	66.4	49.6	64.5
Females								
Jul-Sep 2008	25.5	63.8	74.1	66.0	64.1	49.3	33.1	60.3
Apr-Jun 2009	14.1	59.8	71.6	64.5	63.7	50.0	31.6	57.8
Jul-Sep 2009	15.2	58.6	71.4	64.2	63.5	50.5	30.8	57.6
Oct-Dec 2009	12.8	57.0	71.2	63.5	63.9	50.1	30.0	57.0
Jan-Mar 2010	10.3	52.2	71.1	63.2	64.3	50.6	30.4	56.3
Apr-Jun 2010	9.8	54.2	70.1	63.0	63.9	52.9	31.9	56.4
Jul-Sep 2010	13.2	53.1	69.5	61.2	63.8	52.3	32.0	56.1
All persons								
Jul-Sep 2008	25.0	66.5	79.4	76.3	74.0	61.6	45.5	67.7
Apr-Jun 2009	14.0	56.6	73.4	72.8	71.1	60.4	42.2	62.5
Jul-Sep 2009	15.1	55.3	72.8	72.3	70.8	59.5	41.6	62.1
Oct-Dec 2009	12.6	52.8	72.6	71.2	70.6	58.3	40.5	61.1
Jan-Mar 2010	10.7	49.2	71.8	70.6	70.3	58.3	40.5	60.2
Apr-Jun 2010	10.2	51.1	71.7	70.7	69.6	59.7	40.7	60.4
Jul-Sep 2010	12.8	50.7	71.2	69.6	69.7	59.4	40.8	60.3

¹ The employment rate represents the percentage of the population (or sub-population) that is in employment. The unemployment rate, on the other hand, represents the percentage of the labour force that are unemployed in any given population.

Table 13 Number of persons unemployed (ILO) classified by sex and age group

'000

	Age group								Total
	15-19	20-24	25-34	35-44	45-54	55-59	60-64	65+	
Males									
Jul-Sep 2008	8.6	22.8	30.1	20.7	14.6	4.1	1.7	*	102.8
Apr-Jun 2009	13.2	34.3	64.3	37.8	25.3	7.0	4.8	*	186.9
Jul-Sep 2009	12.4	35.2	66.2	37.0	28.1	8.0	4.6	*	192.0
Oct-Dec 2009	11.5	32.9	63.2	40.5	27.4	7.9	5.1	*	189.1
Jan-Mar 2010	7.8	31.6	65.4	44.0	31.3	8.0	6.2	*	194.9
Apr-Jun 2010	10.8	31.2	64.7	44.6	33.0	9.4	6.1	*	200.1
Jul-Sep 2010	11.2	29.3	65.7	44.7	33.6	9.3	7.1	*	201.5
Females									
Jul-Sep 2008	7.8	13.4	16.5	10.0	6.0	2.0	*	*	56.6
Apr-Jun 2009	9.2	17.4	24.9	14.8	8.3	2.4	*	*	77.7
Jul-Sep 2009	8.9	17.8	27.4	17.9	11.4	3.4	1.0	*	87.9
Oct-Dec 2009	5.9	16.4	24.2	16.6	11.0	3.0	1.2	*	78.4
Jan-Mar 2010	4.9	15.1	26.0	17.7	10.3	4.1	1.8	*	80.2
Apr-Jun 2010	8.3	17.7	29.9	19.5	12.5	3.8	1.5	*	93.6
Jul-Sep 2010	8.9	17.7	29.5	21.6	13.6	4.4	1.5	*	97.5
All persons									
Jul-Sep 2008	16.4	36.2	46.6	30.6	20.5	6.1	2.7	*	159.4
Apr-Jun 2009	22.4	51.7	89.2	52.6	33.6	9.4	5.3	*	264.6
Jul-Sep 2009	21.3	53.1	93.6	54.9	39.4	11.4	5.6	*	279.8
Oct-Dec 2009	17.4	49.4	87.4	57.1	38.4	10.9	6.3	*	267.4
Jan-Mar 2010	12.6	46.7	91.4	61.6	41.6	12.1	7.9	1.0	275.0
Apr-Jun 2010	19.1	49.0	94.6	64.1	45.5	13.2	7.6	*	293.6
Jul-Sep 2010	20.1	47.0	95.1	66.3	47.3	13.8	8.6	*	299.0

* Population estimates of less than 1,000 are deemed too small for publication purposes due to reliability concerns. Sampling or other survey errors are greater in respect of smaller values or estimates of change.

Table 14 Unemployment rates (ILO) classified by sex and age group

%

	Age group							Total	
	15-19	20-24	25-34	35-44	45-54	55-59	60-64		65+
Males									
Jul-Sep 2008	19.5	16.7	8.2	6.7	5.9	4.5	2.9	*	8.0
Apr-Jun 2009	40.0	30.2	18.0	12.3	10.4	7.7	8.0	*	15.1
Jul-Sep 2009	36.9	31.7	18.6	12.2	11.4	8.9	7.8	*	15.6
Oct-Dec 2009	39.7	32.3	18.1	13.4	11.2	9.0	8.7	*	15.7
Jan-Mar 2010	33.3	33.2	19.0	14.5	12.7	9.2	10.3	*	16.4
Apr-Jun 2010	42.1	32.9	18.9	14.6	13.4	10.5	10.3	*	16.7
Jul-Sep 2010	39.2	31.7	19.3	14.7	13.5	10.4	11.8	*	16.8
Females									
Jul-Sep 2008	18.0	11.2	5.4	4.4	3.3	3.4	*	*	5.8
Apr-Jun 2009	32.3	15.7	8.1	6.5	4.5	3.9	*	*	8.1
Jul-Sep 2009	29.9	16.5	8.9	7.8	6.0	5.5	3.0	*	9.1
Oct-Dec 2009	25.2	15.9	8.0	7.4	5.8	4.8	3.7	*	8.3
Jan-Mar 2010	25.9	16.3	8.6	7.8	5.4	6.4	5.2	*	8.5
Apr-Jun 2010	38.7	18.7	9.8	8.6	6.5	5.6	4.1	*	9.8
Jul-Sep 2010	33.4	19.3	9.8	9.6	7.0	6.6	4.3	*	10.2
All persons									
Jul-Sep 2008	18.8	14.1	6.9	5.8	4.8	4.1	2.8	*	7.0
Apr-Jun 2009	36.4	23.0	13.4	9.9	7.8	6.2	5.7	*	12.0
Jul-Sep 2009	33.6	24.2	14.1	10.3	9.1	7.5	6.1	*	12.7
Oct-Dec 2009	33.2	24.1	13.4	10.8	8.8	7.3	6.9	*	12.4
Jan-Mar 2010	30.0	24.9	14.2	11.6	9.5	8.0	8.5	2.1	12.9
Apr-Jun 2010	40.6	25.8	14.6	12.0	10.4	8.5	8.0	*	13.6
Jul-Sep 2010	36.4	25.5	14.8	12.5	10.7	8.8	9.0	*	13.9

Table 15 Labour force situation of married females classified by age group

Married Females	Age group							Total	
	15-19	20-24	25-34	35-44	45-54	55-59	60-64		65+
Total married women ('000)									
Jul-Sep 2008	*	6.3	149.7	229.4	204.1	87.9	71.7	116.1	865.7
Apr-Jun 2009	*	6.0	148.9	228.7	202.0	88.7	74.1	126.0	874.6
Jul-Sep 2009	*	6.8	146.6	226.6	201.3	88.7	73.7	126.9	870.9
Oct-Dec 2009	*	7.2	153.1	229.1	203.8	88.3	75.2	124.2	881.2
Jan-Mar 2010	*	6.5	145.9	223.8	202.2	85.3	74.4	128.6	867.3
Apr-Jun 2010	*	6.7	147.6	227.6	204.2	85.4	75.6	125.9	873.9
Jul-Sep 2010	*	6.2	150.2	229.0	206.2	87.4	75.0	128.9	883.3
of which In labour force ('000)									
Jul-Sep 2008	*	3.2	107.1	153.7	131.4	43.4	23.2	7.0	469.2
Apr-Jun 2009	*	3.1	108.1	153.1	132.6	44.1	24.1	7.3	472.6
Jul-Sep 2009	*	3.6	109.0	152.9	132.4	45.8	22.7	7.1	473.7
Oct-Dec 2009	*	3.7	112.3	153.0	134.8	44.9	21.7	6.3	476.7
Jan-Mar 2010	*	3.3	107.6	149.3	132.6	44.7	22.4	7.9	468.1
Apr-Jun 2010	*	3.6	108.0	153.1	135.0	47.3	24.1	7.8	479.2
Jul-Sep 2010	*	3.6	110.5	152.4	137.5	48.8	24.6	7.5	485.0
of which In employment ('000)									
Jul-Sep 2008	*	2.5	102.8	147.5	128.2	42.2	22.9	7.0	453.4
Apr-Jun 2009	*	2.2	101.3	144.7	127.7	42.8	23.7	7.3	449.6
Jul-Sep 2009	*	2.7	101.3	142.8	125.4	43.9	22.1	7.1	445.4
Oct-Dec 2009	*	3.1	105.1	143.9	128.7	43.3	21.1	6.3	451.4
Jan-Mar 2010	*	2.8	99.8	139.3	127.2	43.0	21.3	7.7	441.2
Apr-Jun 2010	*	3.0	98.2	142.2	127.9	45.5	23.1	7.7	447.8
Jul-Sep 2010	*	3.0	100.9	139.1	129.4	46.4	23.4	7.5	449.7
Participation rates (%)									
Jul-Sep 2008	*	49.9	71.5	67.0	64.4	49.4	32.3	6.0	54.2
Apr-Jun 2009	*	51.5	72.6	66.9	65.6	49.7	32.5	5.8	54.0
Jul-Sep 2009	*	53.1	74.4	67.5	65.8	51.6	30.8	5.6	54.4
Oct-Dec 2009	*	51.8	73.3	66.8	66.1	50.8	28.9	5.0	54.1
Jan-Mar 2010	*	51.4	73.8	66.7	65.6	52.4	30.2	6.1	54.0
Apr-Jun 2010	*	53.8	73.1	67.3	66.1	55.4	31.9	6.2	54.8
Jul-Sep 2010	*	57.1	73.5	66.6	66.7	55.9	32.8	5.9	54.9

* Population estimates of less than 1,000 are deemed too small for publication purposes due to reliability concerns. Sampling or other survey errors are greater in respect of smaller values or estimates of change.

Table 16 Persons aged 15 years and over classified by labour force, employment, unemployment and long-term unemployment (ILO)

Period	Labour force	In employment	Unemployed	<i>of which</i> Long-term unemployed	Unemployment rate	Long-term unemployment rate
	'000	'000	'000	'000	%	%
Oct-Dec 2000	1,776.8	1,713.8	63.0	22.4	3.5	1.3
Jan-Mar 2001	1,775.3	1,709.4	66.0	22.0	3.7	1.2
Apr-Jun 2001	1,807.4	1,738.0	69.4	20.3	3.8	1.1
Jul-Sep 2001	1,865.2	1,786.8	78.4	23.0	4.2	1.2
Oct-Dec 2001	1,834.8	1,762.6	72.2	21.7	3.9	1.2
Jan-Mar 2002	1,834.6	1,757.0	77.7	22.8	4.2	1.2
Apr-Jun 2002	1,850.8	1,768.5	82.3	20.8	4.4	1.1
Jul-Sep 2002	1,884.8	1,802.5	82.3	22.8	4.4	1.2
Oct-Dec 2002	1,865.3	1,777.2	88.1	27.3	4.7	1.5
Jan-Mar 2003	1,867.8	1,783.0	84.9	26.6	4.5	1.4
Apr-Jun 2003	1,886.7	1,800.0	86.7	26.2	4.6	1.4
Jul-Sep 2003	1,923.9	1,830.5	93.4	27.4	4.9	1.4
Oct-Dec 2003	1,907.2	1,826.1	81.1	29.7	4.3	1.6
Jan-Mar 2004	1,921.2	1,828.1	93.2	29.4	4.9	1.5
Apr-Jun 2004	1,940.0	1,852.2	87.8	26.7	4.5	1.4
Jul-Sep 2004	1,989.3	1,902.3	87.0	27.5	4.4	1.4
Oct-Dec 2004	1,982.2	1,899.5	82.7	28.6	4.2	1.4
Jan-Mar 2005	2,000.9	1,917.1	83.7	26.7	4.2	1.3
Apr-Jun 2005	2,040.4	1,944.6	95.8	29.2	4.7	1.4
Jul-Sep 2005	2,089.5	1,993.9	95.6	28.0	4.6	1.3
Oct-Dec 2005	2,078.8	1,995.1	83.7	25.6	4.0	1.2
Jan-Mar 2006	2,102.3	2,009.4	92.9	26.8	4.4	1.3
Apr-Jun 2006	2,132.8	2,034.9	97.9	29.2	4.6	1.4
Jul-Sep 2006	2,174.5	2,071.9	102.6	28.6	4.7	1.3
Oct-Dec 2006	2,164.5	2,076.9	87.6	26.5	4.0	1.2
Jan-Mar 2007	2,186.6	2,088.5	98.1	26.3	4.5	1.2
Apr-Jun 2007	2,217.0	2,113.9	103.1	28.8	4.7	1.3
Jul-Sep 2007	2,253.1	2,149.8	103.3	28.8	4.6	1.3
Oct-Dec 2007	2,239.8	2,138.8	101.0	29.4	4.5	1.3
Jan-Mar 2008	2,233.5	2,124.1	109.4	29.3	4.9	1.3
Apr-Jun 2008	2,239.6	2,112.8	126.7	33.2	5.7	1.5
Jul-Sep 2008	2,266.6	2,107.1	159.4	38.1	7.0	1.7
Oct-Dec 2008	2,224.3	2,054.6	169.7	37.7	7.6	1.7
Jan-Mar 2009	2,188.4	1,965.6	222.8	49.1	10.2	2.2
Apr-Jun 2009	2,203.1	1,938.5	264.6	57.3	12.0	2.6
Jul-Sep 2009	2,202.3	1,922.4	279.8	71.4	12.7	3.2
Oct-Dec 2009	2,155.2	1,887.7	267.4	89.1	12.4	4.1
Jan-Mar 2010	2,132.7	1,857.6	275.0	112.6	12.9	5.3
Apr-Jun 2010	2,152.7	1,859.1	293.6	127.0	13.6	5.9
Jul-Sep 2010	2,150.5	1,851.5	299.0	140.4	13.9	6.5

Table 17 Persons aged 15 years and over classified by sex and duration of unemployment (ILO)

'000

Duration of unemployment (ILO)	Jul- Sep 08	Apr- Jun 09	Jul- Sep 09	Oct- Dec 09	Jan- Mar 10	Apr- Jun 10	Jul- Sep 10
Males							
Less than 1 year	72.9	140.8	134.4	117.7	105.9	101.9	94.7
1 year and over	28.3	44.7	55.6	68.8	88.0	96.7	105.7
Not stated	1.7	1.4	2.0	2.6	1.0	1.6	1.1
Total males	102.8	186.9	192.0	189.1	194.9	200.1	201.5
Females							
Less than 1 year	44.5	64.1	71.4	57.3	54.3	62.2	61.5
1 year and over	9.8	12.6	15.8	20.3	24.6	30.4	34.7
Not stated	2.3	1.0	*	*	1.2	1.0	1.3
Total females	56.6	77.7	87.9	78.4	80.2	93.6	97.5
All persons							
Less than 1 year	117.3	204.9	205.8	175.0	160.2	164.1	156.2
1 year and over	38.1	57.3	71.4	89.1	112.6	127.0	140.4
Not stated	4.1	2.4	2.7	3.4	2.3	2.6	2.4
Total persons	159.4	264.6	279.8	267.4	275.0	293.6	299.0

* Population estimates of less than 1,000 are deemed too small for publication purposes due to reliability concerns. Sampling or other survey errors are greater in respect of smaller values or estimates of change.

Table 18 Persons aged 15 years and over classified by sex, age group and duration of unemployment (ILO)

'000

	QNHS Jul-Sept 2009				QNHS Jul-Sept 2010				Total
	Age group			Total	Age group			Total	
	15-24	25-44	45 or over		15-24	25-44	45 or over		
Males									
Less than 1 year	35.9	71.5	27.0	134.4	23.3	51.8	19.6	94.7	
1 year and over	11.2	30.6	13.8	55.6	16.9	58.1	30.7	105.7	
Not stated	*	1.2	*	2.0	*	*	*	1.1	
Total males	47.6	103.3	41.1	192.0	40.5	110.4	50.6	201.5	
Females									
Less than 1 year	23.3	36.8	11.3	71.4	19.0	31.7	10.9	61.5	
1 year and over	3.1	8.2	4.5	15.8	6.9	18.8	9.0	34.7	
Not stated	*	*	*	*	*	*	*	1.3	
Total females	26.7	45.3	15.9	87.9	26.6	51.0	19.9	97.5	
All persons									
Less than 1 year	59.2	108.3	38.3	205.8	42.3	83.4	30.5	156.2	
1 year and over	14.3	38.8	18.3	71.4	23.8	76.9	39.7	140.4	
Not stated	*	1.5	*	2.7	1.0	1.0	*	2.4	
Total persons	74.4	148.5	56.9	279.8	67.1	161.4	70.5	299.0	

* Population estimates of less than 1,000 are deemed too small for publication purposes due to reliability concerns. Sampling or other survey errors are greater in respect of smaller values or estimates of change.

Table 19 Persons aged 15 years and over classified by detailed ILO Economic Status

'000

ILO Economic Status	Jul- Sep 08	Oct- Dec 08	Jan- Mar 09	Apr- Jun 09	Jul- Sep 09	Oct- Dec 09	Jan- Mar 10	Apr- Jun 10	Jul- Sep 10
In labour force	2,266.6	2,224.3	2,188.4	2,203.1	2,202.3	2,155.2	2,132.7	2,152.7	2,150.5
In employment:	2,107.1	2,054.6	1,965.6	1,938.5	1,922.4	1,887.7	1,857.6	1,859.1	1,851.5
full-time	1,712.7	1,661.5	1,560.2	1,532.1	1,510.3	1,468.3	1,444.5	1,448.9	1,436.8
part-time:	394.4	393.1	405.4	406.4	412.1	419.5	413.1	410.2	414.7
<i>of which: part-time, not underemployed</i> ¹	-	-	-	-	-	-	-	-	-
<i>part-time, underemployed</i> ¹	-	-	-	-	-	-	-	-	-
Unemployed:	159.4	169.7	222.8	264.6	279.8	267.4	275.0	293.6	299.0
seeking full-time work	142.3	150.0	202.9	244.0	256.4	247.7	256.3	271.0	274.9
seeking part-time work	17.2	19.7	19.9	20.6	23.5	19.7	18.8	22.7	24.1
Not in labour force	1,263.2	1,309.5	1,343.1	1,320.8	1,323.9	1,365.8	1,383.3	1,359.7	1,362.2
Marginally attached to the labour force:	14.5	11.4	15.6	15.2	19.7	21.9	23.3	21.4	22.3
Discouraged workers	11.8	9.3	12.1	11.6	15.5	16.8	18.3	16.3	17.6
Passive jobseekers	2.7	2.1	3.6	3.6	4.1	5.1	5.1	5.2	4.6
Others:	1,248.6	1,298.1	1,327.5	1,305.6	1,304.2	1,343.9	1,360.0	1,338.2	1,339.9
Persons not in education, who want work ²	58.0	51.0	61.1	67.7	69.5	64.4	65.1	69.8	77.4
Persons in education, who want work ²	21.7	26.2	27.4	32.1	26.1	29.1	33.0	39.6	31.0
All other persons	1,168.9	1,221.0	1,239.0	1,205.8	1,208.6	1,250.4	1,261.9	1,228.8	1,231.5
Total persons aged 15 or over	3,529.7	3,533.9	3,531.5	3,523.8	3,526.2	3,521.0	3,516.0	3,512.4	3,512.7

¹ The data series on part-time underemployed and not underemployed persons has been revised as per text on page 3 and Background Notes. Data is available on page 4.

² Persons who want work are those who are looking for work but are not available and those who say they want a job but are not looking for work.

Table 20 Indicators of potential labour supply

Quarter	S1	S2	S3 ¹	S3 ²	%
Jul-Sep 2005	5.0	8.3	8.5	-	S1: Unemployed plus discouraged workers as a percentage of the Labour Force plus discouraged workers.
Oct-Dec 2005	4.4	7.1	7.3	-	
Jan-Mar 2006	4.8	7.5	7.7	-	S2: Unemployed plus marginally attached plus others not in education who want work as a percentage of the Labour Force plus marginally attached plus others not in education who want work.
Apr-Jun 2006	5.0	7.7	7.9	-	
Jul-Sep 2006	5.2	8.1	8.3	-	
Oct-Dec 2006	4.4	7.0	7.2	-	
Jan-Mar 2007	5.0	7.7	7.9	-	
Apr-Jun 2007	5.0	7.5	7.8	-	S3: Unemployed plus marginally attached plus others not in education who want work plus underemploy part-time workers as a percentage of the Labour Force plus marginally attached plus others not in education who want work.
Jul-Sep 2007	5.1	7.3	7.6	-	
Oct-Dec 2007	4.9	7.3	7.5	-	
Jan-Mar 2008	5.3	7.5	7.7	-	
Apr-Jun 2008	6.0	8.3	8.7	-	
Jul-Sep 2008	7.5	9.9	10.5	13.9	
Oct-Dec 2008	8.0	10.2	10.8	13.6	
Jan-Mar 2009	10.7	13.2	14.0	17.6	
Apr-Jun 2009	12.5	15.2	15.8	20.0	
Jul-Sep 2009	13.3	16.1	16.8	20.9	
Oct-Dec 2009	13.1	15.8	16.5	20.4	
Jan-Mar 2010	13.6	16.4	17.0	21.0	
Apr-Jun 2010	14.3	17.2	17.9	22.1	
Jul-Sep 2010	14.6	17.7	18.6	22.6	

¹ S3 calculated using old definition of part-time underemployed workers - see text on page 3 and Background Notes.

² S3 calculated using new definition of part-time underemployed workers - see text on page 3 and Background Notes.

Table 21 Persons aged 15 years and over classified by Principal Economic Status¹

Principal Economic Status	Jul-Sep 08	Apr-Jun 09	Jul-Sep 09	Oct-Dec 09	Jan-Mar 10	Apr-Jun 10	Jul-Sep 10
Males							
At work	1,137.8	1,022.3	1,004.5	988.3	968.1	968.2	962.0
Unemployed	124.9	226.5	240.3	246.7	254.8	249.3	251.3
Student	171.1	174.6	176.0	176.9	187.8	184.5	184.1
Home duties	6.4	6.7	6.9	7.4	7.7	7.5	7.3
Retired	219.6	224.7	224.6	232.7	230.4	233.9	235.5
Others	87.3	82.2	86.1	81.8	81.7	81.6	82.6
Total males	1,747.0	1,737.0	1,738.4	1,733.8	1,730.6	1,724.9	1,722.8
Females							
At work	877.2	850.3	843.0	841.1	830.6	830.8	822.1
Unemployed	47.6	79.3	92.4	88.8	90.6	94.8	100.2
Student	184.5	184.9	176.8	180.2	191.5	184.6	182.1
Home duties	528.7	531.8	534.8	533.3	526.0	521.1	525.2
Retired	91.7	87.3	87.7	90.1	92.8	99.3	102.0
Others	52.9	53.3	53.0	53.8	54.1	57.0	58.2
Total females	1,782.7	1,786.8	1,787.8	1,787.2	1,785.4	1,787.5	1,789.9
All persons							
At work	2,015.0	1,872.5	1,847.5	1,829.4	1,798.7	1,799.0	1,784.1
Unemployed	172.5	305.8	332.8	335.5	345.3	344.1	351.5
Student	355.6	359.5	352.8	357.1	379.3	369.0	366.2
Home duties	535.2	538.6	541.7	540.7	533.7	528.5	532.5
Retired	311.3	311.9	312.3	322.8	323.2	333.2	337.5
Others	140.2	135.5	139.1	135.5	135.8	138.5	140.9
Total persons	3,529.7	3,523.8	3,526.2	3,521.0	3,516.0	3,512.4	3,512.7

¹ Classification based on respondent's own subjective assessment, see Background Notes.

Table 22 Persons aged 15 years and over classified by ILO Economic Status and by Principal Economic Status, July-September 2010

'000

ILO Economic Status	Principal Economic Status						Total
	At work	Unemployed	Student	Home duties	Retired	Others	
Males							
In employment:	958.9	4.4	24.0	*	4.8	2.3	994.5
full-time	869.6	2.1	3.5	*	*	1.2	877.0
part-time	89.3	2.4	20.6	*	4.2	1.1	117.6
<i>of which: part-time, not underemployed¹</i>	-	-	-	-	-	-	-
<i>part-time, underemployed¹</i>	-	-	-	-	-	-	-
Unemployed:	1.2	189.0	7.4	*	*	3.0	201.5
seeking full-time work	1.2	187.5	4.0	*	*	2.8	196.1
seeking part-time work	*	1.5	3.4	*	*	*	5.4
Marginally attached to the labour force	*	10.2	1.8	*	*	*	13.9
Others	*	47.7	150.8	6.9	229.7	76.8	512.9
Total males aged 15 or over	962.0	251.3	184.1	7.3	235.5	82.6	1,722.8
Females							
In employment:	817.4	3.7	26.8	5.8	1.1	2.2	857.0
full-time	555.1	1.0	1.9	*	*	1.1	559.9
part-time	262.2	2.7	24.9	5.2	1.0	1.1	297.1
<i>of which: part-time, not underemployed¹</i>	-	-	-	-	-	-	-
<i>part-time, underemployed¹</i>	-	-	-	-	-	-	-
Unemployed:	*	62.9	7.2	25.1	*	1.3	97.5
seeking full-time work	*	57.1	3.5	16.5	*	1.0	78.8
seeking part-time work	*	5.7	3.7	8.6	*	*	18.6
Marginally attached to the labour force	1.5	3.4	1.5	1.2	*	*	8.4
Others	2.3	30.2	146.6	493.0	100.7	54.1	827.0
Total females aged 15 or over	822.1	100.2	182.1	525.2	102.0	58.2	1,789.9
All persons							
In employment:	1,776.3	8.1	50.9	5.9	5.8	4.5	1,851.5
full-time	1,424.7	3.0	5.4	*	*	2.3	1,436.8
part-time	351.6	5.1	45.5	5.3	5.1	2.2	414.7
<i>of which: part-time, not underemployed¹</i>	-	-	-	-	-	-	-
<i>part-time, underemployed¹</i>	-	-	-	-	-	-	-
Unemployed:	2.1	251.9	14.6	25.4	*	4.3	299.0
seeking full-time work	2.0	244.7	7.5	16.7	*	3.7	274.9
seeking part-time work	*	7.2	7.2	8.7	*	*	24.1
Marginally attached to the labour force	2.5	13.6	3.3	1.2	*	1.2	22.3
Others	3.2	77.9	297.4	500.0	330.5	130.9	1,339.9
Total persons aged 15 or over	1,784.1	351.5	366.2	532.5	337.5	140.9	3,512.7

¹ The data series on part-time underemployed and not underemployed persons has been revised as per text on page 3 and Background Notes. Data is available on request from the CSO and will be re-issued in the Q4 2010 release.

* Population estimates of less than 1,000 are deemed too small for publication purposes due to reliability concerns. Sampling or other survey errors are greater in respect of smaller values or estimates of change.

Table 23a Persons aged 15 to 64, classified by the highest level of education attained, ILO Economic Status and sex, July-September 2009 and 2010

Highest education level attained	July-September 2010						
	In employment	Unemployed	In labour force	Not in labour force	All persons 15 - 64	Unemployment rate	Participation rate
	'000	'000	'000	'000	'000	%	%
Males aged 15 to 64							
Primary or below	70.4	21.2	91.7	93.4	185.0	23.1	49.6
Lower secondary	136.2	48.7	185.0	91.9	276.8	26.3	66.8
Higher secondary	256.1	55.8	311.9	75.1	387.1	17.9	80.6
Post leaving cert	112.2	33.7	145.9	19.3	165.2	23.1	88.3
Third level non-honours degree ¹	131.2	16.3	147.5	15.9	163.5	11.1	90.2
Third level honours degree or above ¹	227.6	18.6	246.1	24.6	270.8	7.6	90.9
Other	29.3	6.6	35.9	8.0	43.9	18.4	81.8
Total males aged 15 to 64	963.0	201.0	1,164.0	328.2	1,492.2	17.3	78.0
Females aged 15 to 64							
Primary or below	32.2	4.8	37.0	114.2	151.2	13.0	24.5
Lower secondary	75.2	15.4	90.6	143.8	234.4	17.0	38.7
Higher secondary	214.0	28.8	242.8	149.6	392.4	11.9	61.9
Post leaving cert	91.3	14.6	105.9	49.4	155.3	13.8	68.2
Third level non-honours degree ¹	172.2	14.0	186.2	48.0	234.2	7.5	79.5
Third level honours degree or above ¹	240.3	17.2	257.5	44.4	301.8	6.7	85.3
Other	20.2	2.4	22.6	15.8	38.4	10.6	58.9
Total females aged 15 to 64	845.3	97.2	942.5	565.2	1,507.8	10.3	62.5
All persons aged 15 to 64							
Primary or below	102.6	26.1	128.7	207.5	336.2	20.3	38.3
Lower secondary	211.4	64.1	275.5	235.7	511.2	23.3	53.9
Higher secondary	470.1	84.6	554.8	224.7	779.5	15.2	71.2
Post leaving cert	203.5	48.3	251.8	68.7	320.5	19.2	78.6
Third level non-honours degree ¹	303.4	30.3	333.7	63.9	397.6	9.1	83.9
Third level honours degree or above ¹	467.8	35.8	503.6	69.0	572.6	7.1	87.9
Other	49.5	9.0	58.5	23.8	82.3	15.4	71.1
Total persons aged 15 to 64	1,808.3	298.2	2,106.5	893.5	3,000.0	14.2	70.2

¹ A break in continuity has occurred in the Educational Attainment series and, therefore, data from Q2 2009 is not directly comparable with previous quarters. The classification of educational levels has been revised in order to facilitate the linking of education categories to the National Framework of Qualifications (NFQ), while also retaining links with the international education classification, ISCED97. This affects the classification in a number of ways. One key difference is the distinction between ordinary and honours level degrees. For information on the framework see: <http://www.nfq.ie/nfq/en/>. For information on the ISCED97 classification see: http://www.uis.unesco.org/ev_en.php?ID=7433_201&ID2=DO_TOPIC.

**Table 23a - cont'd Persons aged 15 to 64, classified by the highest level of education attained,
ILO Economic Status and sex, July-September 2009 and 2010**

Highest education level attained	July-September 2009				All persons 15 - 64	Unemployment rate	Participation rate
	In employment	Unemployed	In labour force	Not in labour force			
	'000	'000	'000	'000	'000	%	%
Males aged 15 to 64							
Primary or below	79.8	22.2	102.0	96.2	198.2	21.8	51.5
Lower secondary	155.7	45.1	200.7	93.3	294.0	22.5	68.3
Higher secondary	254.1	51.3	305.4	66.0	371.4	16.8	82.2
Post leaving cert	127.9	31.4	159.3	17.5	176.8	19.7	90.1
Third level non-honours degree ¹	142.1	15.3	157.4	13.5	170.9	9.7	92.1
Third level honours degree or above ¹	216.0	19.8	235.7	19.7	255.5	8.4	92.3
Other	31.9	6.5	38.4	9.0	47.4	16.9	81.0
Total males aged 15 to 64	1,007.4	191.6	1,199.0	315.2	1,514.2	16.0	79.2
Females aged 15 to 64							
Primary or below	39.1	4.7	43.8	118.8	162.6	10.7	26.9
Lower secondary	80.0	10.9	90.9	145.1	236.0	12.0	38.5
Higher secondary	223.3	23.1	246.5	144.0	390.5	9.4	63.1
Post leaving cert	107.6	15.1	122.7	47.5	170.3	12.3	72.0
Third level non-honours degree ¹	181.5	15.1	196.6	47.0	243.5	7.7	80.7
Third level honours degree or above ¹	214.8	15.7	230.5	36.6	267.1	6.8	86.3
Other	24.7	3.1	27.8	14.6	42.5	11.2	65.4
Total females aged 15 to 64	871.0	87.8	958.8	553.8	1,512.5	9.2	63.4
All persons aged 15 to 64							
Primary or below	118.9	26.9	145.8	215.0	360.8	18.4	40.4
Lower secondary	235.7	56.0	291.7	238.4	530.0	19.2	55.0
Higher secondary	477.4	74.4	551.9	210.0	761.9	13.5	72.4
Post leaving cert	235.5	46.5	282.0	65.1	347.1	16.5	81.2
Third level non-honours degree ¹	323.6	30.4	354.0	60.5	414.5	8.6	85.4
Third level honours degree or above ¹	430.8	35.5	466.2	56.4	522.6	7.6	89.2
Other	56.5	9.7	66.2	23.6	89.8	14.7	73.7
Total persons aged 15 to 64	1,878.4	279.4	2,157.8	868.9	3,026.7	12.9	71.3

**Table 23b Persons aged 18-64 classified by ILO Economic Status, age, highest level of educational attainment and sex,
July - September 2007, 2008, 2009 and 2010**

	% of persons											
	In employment				Unemployed ¹				Not economically active			
	Jul- Sep 07	Jul- Sep 08	Jul- Sep 09	Jul- Sep 10	Jul- Sep 07	Jul- Sep 08	Jul- Sep 09	Jul- Sep 10	Jul- Sep 07	Jul- Sep 08	Jul- Sep 09	Jul- Sep 10
Persons aged 18-24²												
Early school leavers aged 18-24³												
Male	61	50	32	28	19	29	42	45	20	20	27	27
Female	40	32	30	25	10	12	14	21	49	56	57	55
Total	53	44	31	27	16	23	31	35	31	33	38	39
Other persons aged 18-24												
Male	72	65	47	42	5	11	19	17	23	25	34	41
Female	66	61	53	47	5	8	11	12	29	31	36	41
Total	69	63	50	45	5	9	15	14	26	28	35	41
Persons aged 25-64²												
Persons aged 25-64 with lower secondary or below as highest level of education												
Male	73	69	60	57	5	8	14	17	22	23	26	26
Female	41	41	37	35	2	3	4	5	57	56	59	60
Total	59	56	50	47	4	6	10	11	37	38	41	41
Other persons aged 25-64												
Male	90	88	81	79	3	5	10	12	7	7	9	10
Female	73	73	70	69	2	3	5	6	24	25	24	25
Total	81	80	75	74	3	4	8	9	16	16	17	18

¹ Persons unemployed as percentage of all persons in population - not comparable to unemployment rate.

² Persons whose educational situation is unknown or not stated are not included.

³ Early school leavers are defined as persons aged 18-24 whose highest level of education attained is lower secondary or below and have not received education (either formal or non-formal) in the four weeks prior to the survey.

Note: The definition of Early School leavers (ESL) has been updated to take account of persons on holidays from education or training in the previous 4 weeks. This primarily affects estimates for quarter 3 of each year. Revisions have been made to data for this table back to quarter 1 2007 and further information is available at www.cso.ie/qnhs. It is not possible to revise data prior to 2007 as the question asking respondents whether they had received formal education or training in the past 4 weeks did not allow an option for persons who had been on holidays from education or training. Caution should be taken in comparing data from before 2007 to data from 2007 onwards.

Table 24 Estimated adult¹ members of family units classified by composition of family unit, ILO Economic Status and sex, July-September 2010

'000

Composition of family unit	In employment			Unemployed			Not economically active			Total ²		
	Male	Female	Total	Male	Female	Total	Male	Female	Total	Male	Female	Total
Husband and wife (or couple) without children:												
Wife/female partner aged under 45	104.7	103.8	208.5	12.8	6.5	19.4	7.3	9.6	16.9	124.8	119.9	244.7
Wife/female partner aged 45 to 64	73.3	62.3	135.5	10.0	4.8	14.9	49.5	62.9	112.4	132.8	130.0	262.8
Wife/female partner aged 65 or over	11.7	5.9	17.6	*	*	*	93.3	98.0	191.3	105.4	103.9	209.3
Total	189.6	172.0	361.6	23.3	11.4	34.7	150.1	170.5	320.6	363.1	353.9	716.9
Husband and wife (or couple) with children:												
At least 1 child aged under 5 and no child aged 15 or over	191.8	138.8	330.7	35.0	14.5	49.4	13.2	79.4	92.6	240.0	232.6	472.7
At least 1 child aged under 5 and at least 1 child aged 15 or over	9.4	5.1	14.5	2.2	*	2.9	1.4	6.3	7.6	12.9	12.1	25.0
All children aged 5 to 14	70.7	49.6	120.3	11.6	5.0	16.6	5.8	30.2	36.0	88.1	84.8	172.9
No child aged under 5, at least 1 child aged 5 to 14 and at least 1 child aged 15 or over	96.5	68.8	165.3	15.3	5.8	21.2	10.8	43.3	54.1	122.7	117.9	240.6
All children aged 15 or over ³	131.2	100.1	231.3	14.2	5.9	20.1	56.2	89.4	145.6	201.6	195.4	397.0
Total	499.6	362.5	862.1	78.3	31.9	110.2	87.4	248.5	335.9	665.3	642.9	1,308.2
Lone parent with children:												
At least 1 child aged under 5 and no child aged 15 or over	*	17.0	17.7	*	4.7	5.3	*	27.1	27.5	1.7	48.7	50.5
At least 1 child aged under 5 and at least 1 child aged 15 or over	*	1.6	1.6	*	*	*	*	2.3	2.5	*	4.1	4.2
All children aged 5 to 14	*	13.1	14.0	*	3.8	4.1	*	10.5	10.8	1.5	27.4	28.9
No child aged under 5, at least 1 child aged 5 to 14 and at least 1 child aged 15 or over	1.6	17.9	19.5	*	3.2	3.7	1.2	11.4	12.5	3.3	32.4	35.7
All children aged 15 or over ³	7.6	28.2	35.8	1.4	2.5	4.0	8.8	44.6	53.4	17.8	75.4	93.2
Total	10.8	77.7	88.5	2.9	14.3	17.2	10.8	95.9	106.7	24.5	187.9	212.5
Total	700.0	612.2	1,312.2	104.5	57.6	162.1	248.3	514.8	763.2	1,052.9	1,184.7	2,237.5

¹ For the purpose of the table, an adult is either a lone parent or a member of a couple.

² See the discussion on the grossing effect in the background notes.

³ For the purpose of this table persons (regardless of age) living with a parent or parents are defined as children.

* Population estimates of less than 1,000 are deemed too small for publication purposes due to reliability concerns. Sampling or other survey errors are greater in respect of smaller values or estimates of change.

Table 25 Labour Force Survey results classified by ILO Economic Status for persons aged 15 or over in EU member states¹

Region	Q2/2009					Q2/2010				
	Labour force	In employment	Unemployed	Participation rate	Unemployment rate	Labour force	In employment	Unemployed	Participation rate	Unemployment rate
	'000	'000	'000	%	%	'000	'000	'000	%	%
EU27	239,129.9	218,243.8	20,886.1	57.6	8.7	239,631.7	216,953.4	22,678.3	57.6	9.5
EU15	191,098.3	174,060.3	17,038.0	58.2	8.9	191,040.4	173,082.6	17,957.8	58.0	9.4
Eurozone ²	153,599.2	139,479.6	14,119.5	57.1	9.2	153,467.3	138,476.4	14,990.9	57.0	9.8
Belgium	4,751.0	4,395.7	355.3	53.0	7.5	4,834.1	4,442.8	391.4	53.5	8.1
Bulgaria	3,522.6	3,300.1	222.6	53.5	6.3	3,414.3	3,072.1	342.2	52.2	10.0
Czech Republic	5,275.2	4,941.3	333.9	58.6	6.3	5,255.4	4,880.9	374.5	58.3	7.1
Denmark	2,965.2	2,788.1	177.1	65.8	6.0	2,955.9	2,740.0	216.0	65.0	7.3
Germany	41,880.9	38,645.2	3,235.7	59.5	7.7	41,530.5	38,609.9	2,920.6	59.3	7.0
Estonia	684.8	592.6	92.2	60.3	13.5	686.6	558.8	127.7	60.6	18.6
Greece	4,974.5	4,531.9	442.6	53.7	8.9	5,021.0	4,427.0	594.0	54.0	11.8
Spain	23,082.4	18,945.0	4,137.5	59.4	17.9	23,122.3	18,476.9	4,645.5	59.4	20.1
France	28,319.1	25,832.9	2,486.1	57.0	8.8	28,337.7	25,811.2	2,526.5	56.8	8.9
Ireland	2,189.2	1,928.4	260.8	62.1	11.9	2,149.5	1,859.1	290.4	61.2	13.5
Italy	25,040.2	23,201.4	1,838.8	48.8	7.3	25,099.4	23,006.7	2,092.7	48.7	8.3
Cyprus	403.8	382.9	20.9	64.4	5.2	414.3	387.9	26.4	65.0	6.4
Latvia	1,199.0	999.3	199.7	61.5	16.7	1,161.7	935.9	225.8	59.9	19.4
Lithuania	1,645.4	1,422.4	223.1	57.8	13.6	1,625.3	1,328.0	297.2	57.4	18.3
Luxembourg	230.6	218.9	11.7	58.5	5.1	228.7	219.2	9.5	57.0	4.2
Hungary	4,198.8	3,797.1	401.7	50.0	9.6	4,252.2	3,778.9	473.3	50.7	11.1
Malta	173.4	161.3	12.1	49.7	7.0	177.5	165.4	12.1	50.4	6.8
Netherlands	8,891.1	8,601.6	289.5	66.7	3.3	8,912.7	8,544.5	368.2	66.5	4.1
Austria	4,279.1	4,080.3	198.8	61.3	4.6	4,268.2	4,081.0	187.2	60.8	4.4
Poland	17,201.6	15,846.4	1,355.1	54.7	7.9	17,676.2	15,994.2	1,682.0	55.7	9.5
Portugal	5,583.9	5,076.2	507.7	61.9	9.1	5,581.4	4,991.6	589.8	61.9	10.6
Romania	10,007.8	9,381.3	626.6	54.9	6.3	10,185.1	9,488.1	697.0	55.9	6.8
Slovenia	1,038.3	980.5	57.7	59.4	5.6	1,041.8	968.0	73.9	59.2	7.1
Slovak Republic	2,680.9	2,378.5	302.4	58.6	11.3	2,700.9	2,312.5	388.4	58.8	14.4
Finland	2,761.6	2,497.3	264.2	62.4	9.6	2,748.3	2,485.4	262.9	61.7	9.6
Sweden	4,980.9	4,524.7	456.2	64.3	9.2	5,023.3	4,554.9	468.4	64.3	9.3
United Kingdom	31,168.5	28,792.6	2,375.9	62.4	7.6	31,227.5	28,832.6	2,394.9	62.2	7.7

Source: Eurostat and Quarterly National Household Survey.

Note: ¹ Trends in some member states may be affected by changes in methodology.

² Eurozone consists of EU15 states (with the exceptions of Denmark, Sweden and United Kingdom), Slovenia, Malta and Cyprus.

Annex

Estimates of the Population aged 15 years and over classified by nationality and labour force status

The following tables provide estimates of the labour force classified by nationality. The figures are considered 'broadly indicative' as the very large migration flows in recent years present a significant measurement challenge in a general purpose household survey such as the QNHS. The main concerns, which are based on international experience, centre around the extent to which the survey captures minority communities in a proportionate and representative manner. Notwithstanding these concerns, the CSO believes that the estimates presented in the following tables provide a broadly accurate picture of the current situation and recent trends.

Table A1 Estimated number of persons aged 15 years and over classified by nationality and ILO Economic Status, July - September 2009 and 2010

Nationality	ILO Economic Status				Total
	In employment	Unemployed	In labour force	Not economically active	
'000					
Q3 2010					
Irish nationals ¹	1,625.1	248.9	1,874.0	1,245.1	3,119.0
Non-Irish nationals	226.4	50.1	276.6	117.1	393.7
<i>of which:</i>					
<i>United Kingdom</i>	35.6	7.8	43.4	30.1	73.5
<i>EU15 excl. Irl. & UK</i>	20.6	2.6	23.2	9.1	32.3
<i>EU15 to EU27 States</i>	110.8	27.6	138.4	37.3	175.7
<i>Other</i>	59.4	12.1	71.5	40.7	112.2
Total persons	1,851.5	299.0	2,150.5	1,362.2	3,512.7
Q3 2009					
Irish nationals ¹	1,659.6	225.2	1,884.8	1,208.7	3,093.4
Non-Irish nationals	262.8	54.7	317.5	115.3	432.8
<i>of which:</i>					
<i>United Kingdom</i>	44.1	9.5	53.6	36.0	89.5
<i>EU15 excl. Irl. & UK</i>	28.2	2.4	30.6	9.2	39.7
<i>EU15 to EU27 States</i>	122.1	29.6	151.7	30.3	182.0
<i>Other</i>	68.5	13.2	81.6	39.9	121.5
Total persons	1,922.4	279.8	2,202.3	1,323.9	3,526.2
Year on year changes					
Irish nationals ¹	- 34.5	+ 23.7	- 10.8	+ 36.4	+ 25.6
Non-Irish nationals	- 36.4	- 4.6	- 40.9	+ 1.8	- 39.1
<i>of which:</i>					
<i>United Kingdom</i>	- 8.5	- 1.7	- 10.2	- 5.9	- 16.0
<i>EU15 excl. Irl. & UK</i>	- 7.6	+ 0.2	- 7.4	- 0.1	- 7.4
<i>EU15 to EU27 States</i>	- 11.3	- 2.0	- 13.3	+ 7.0	- 6.3
<i>Other</i>	- 9.1	- 1.1	- 10.1	+ 0.8	- 9.3
Total persons	- 70.9	+ 19.2	- 51.8	+ 38.3	- 13.5

¹ Includes 'not stated'.

Data may be subject to future revision.

Data may be subject to sampling or other survey errors, which are greater in respect of smaller values or estimates of change.

Table A2 Estimated number of persons aged 15 years and over in employment (ILO) classified by nationality and NACE Rev. 2 Economic Sector, July-September 2009 and 2010

'000

Nationality	NACE Economic Sector							
	A Agriculture, forestry and fishing	B-E Industry	F Construction	G Wholesale and retail trade, repair of motor vehicles and motorcycles	H Transport and storage	I Accommodation and food service activities	J Information and communication	
Q3 2010								
Irish nationals ¹	84.1	200.7	103.4	231.8	82.6	89.3	61.7	
Non-Irish nationals	5.5	40.2	11.3	38.0	9.2	33.4	11.6	
<i>of which:</i>								
<i>United Kingdom</i>	*	5.2	1.8	4.9	1.4	1.7	2.5	
<i>EU15 excl. Irl. & UK</i>	*	4.0	*	1.7	*	2.1	3.3	
<i>EU15 to EU27 States</i>	4.4	23.8	8.0	25.1	4.6	20.5	3.0	
<i>Other</i>	*	7.2	1.3	6.3	2.4	9.1	2.8	
Total persons	89.5	240.9	114.7	269.7	91.9	122.6	73.3	
Q3 2009								
Irish nationals ¹	92.3	212.2	133.9	228.5	84.6	82.7	60.1	
Non-Irish nationals	3.6	39.9	17.5	43.3	11.5	40.7	12.4	
<i>of which:</i>								
<i>United Kingdom</i>	*	5.0	2.5	5.4	2.1	2.9	2.8	
<i>EU15 excl. Irl. & UK</i>	*	3.4	*	3.1	*	3.1	4.2	
<i>EU15 to EU27 States</i>	2.3	26.0	12.1	25.5	5.9	22.5	2.2	
<i>Other</i>	*	5.6	2.2	9.4	2.6	12.1	3.1	
Total persons	95.9	252.1	151.5	271.8	96.1	123.3	72.5	
Year on year changes								
Irish nationals ¹	- 8.2	- 11.5	- 30.5	+ 3.3	- 2.0	+ 6.6	+ 1.6	
Non-Irish nationals	+ 1.9	+ 0.3	- 6.2	- 5.3	- 2.3	- 7.3	- 0.8	
<i>of which:</i>								
<i>United Kingdom</i>	*	+ 0.2	- 0.7	- 0.5	- 0.7	- 1.2	- 0.3	
<i>EU15 excl. Irl. & UK</i>	*	+ 0.6	*	- 1.4	*	- 1.0	- 0.9	
<i>EU15 to EU27 States</i>	+ 2.1	- 2.2	- 4.1	- 0.4	- 1.3	- 2.0	+ 0.8	
<i>Other</i>	*	+ 1.6	- 0.9	- 3.1	- 0.2	- 3.0	- 0.3	
Total persons	- 6.4	- 11.2	- 36.8	- 2.1	- 4.2	- 0.7	+ 0.8	

¹ Includes 'not stated'.

* Population estimates of less than 1,000 are deemed too small for publication purposes due to reliability concerns. Sampling or other survey errors are greater in respect of smaller values or estimates of change.

Data may be subject to future revision.

Data may be subject to sampling or other survey errors, which are greater in respect of smaller values or estimates of change.

Table A2 (contd.) Estimated number of persons aged 15 years and over in employment (ILO) classified by nationality and NACE Rev. 2 Economic Sector, July-September 2009 and 2010

'000

NACE Economic Sector								Total	Nationality
K-L	M	N	O	P	Q	R-U			
Financial, insurance and real estate activities	Professional, scientific and technical activities	Administrative and support service activities	Public administration and defence, compulsory social security	Education	Human health and social work activities	Other NACE activities			
Q3 2010									
92.1	89.6	47.5	103.7	141.7	208.8	88.0	1,625.1	Irish nationals ¹	
7.2	6.8	12.4	1.3	7.3	28.3	14.0	226.4	Non-Irish nationals	
<i>of which:</i>									
3.4	2.7	1.8	*	3.6	3.6	1.9	35.6	<i>United Kingdom</i>	
1.4	1.1	1.8	*	*	1.2	1.9	20.6	<i>EU15 excl. Irl. & UK</i>	
1.1	1.7	7.0	*	1.0	5.2	5.4	110.8	<i>EU15 to EU27 States</i>	
1.3	1.2	1.9	*	1.8	18.4	4.7	59.4	<i>Other</i>	
99.3	96.4	60.0	104.9	149.0	237.2	102.0	1,851.5	Total persons	
Q3 2009									
98.9	89.7	51.9	103.0	132.7	200.9	88.2	1,659.6	Irish nationals ¹	
10.7	11.5	15.3	2.3	6.5	32.6	15.1	262.8	Non-Irish nationals	
<i>of which:</i>									
3.4	4.5	2.6	1.0	2.4	6.5	2.6	44.1	<i>United Kingdom</i>	
3.2	1.7	*	*	1.3	2.3	2.9	28.2	<i>EU15 excl. Irl. & UK</i>	
2.1	2.2	8.4	*	*	5.7	5.8	122.1	<i>EU15 to EU27 States</i>	
2.0	3.1	3.5	*	2.1	18.1	3.8	68.5	<i>Other</i>	
109.6	101.2	67.2	105.3	139.2	233.5	103.3	1,922.4	Total persons	
Year on year changes									
- 6.8	- 0.1	- 4.4	+ 0.7	+ 9.0	+ 7.9	- 0.2	- 34.5	Irish nationals ¹	
- 3.5	- 4.7	- 2.9	- 1.0	+ 0.8	- 4.3	- 1.1	- 36.4	Non-Irish nationals	
<i>of which:</i>									
0.0	- 1.8	- 0.8	- 0.2	+ 1.2	- 2.9	- 0.7	- 8.5	<i>United Kingdom</i>	
- 1.8	- 0.6	*	*	- 0.4	- 1.1	- 1.0	- 7.6	<i>EU15 excl. Irl. & UK</i>	
- 1.0	- 0.5	- 1.4	*	*	- 0.5	- 0.4	- 11.3	<i>EU15 to EU27 States</i>	
- 0.7	- 1.9	- 1.6	*	- 0.3	+ 0.3	+ 0.9	- 9.1	<i>Other</i>	
- 10.3	- 4.8	- 7.2	- 0.4	+ 9.8	+ 3.7	- 1.3	- 70.9	Total persons	

Background Notes

Purpose of Survey	The Quarterly National Household Survey (QNHS) began in September 1997, replacing the annual April Labour Force Survey (LFS). The purpose of the survey is the production of quarterly labour force estimates and occasional reports on special social topics. The survey meets the requirements of Council Regulation (EC) No. 577/98, adopted in March 1998, which requires the introduction of quarterly labour force surveys in EU member states.
Reference Period	Information is collected continuously throughout the year from households surveyed each week to give a total sample of 39,000 households in each quarter. Up to and including the fourth quarter of 2008 the QNHS operated on a seasonal quarter basis since its establishment in Q4 1997. As of the first quarter of 2009 the Quarterly National Household Survey (QNHS) is now undertaken on a calendar quarter basis. The reference quarters for survey results are: Q1 - January to March, Q2 - April to June, Q3 - July to September and Q4 - October to December.
Data Collection	Information is collected on laptop computers, using computer-assisted personal interview (CAPI) software.
Sample Design	A two-stage sample design is used. This comprises a first stage sample of 2,600 blocks (or small areas) selected at county level to proportionately represent eight strata reflecting population density. Each block was selected to contain, on average, 75 dwellings and the sample of blocks is fixed for a period of about five years. In the second stage of sampling, 15 households are surveyed in each block to give a total quarterly sample of 39,000 households. Households are asked to take part in the survey for five consecutive quarters and are then replaced by other households in the same block. Thus, one fifth of the households in the survey are replaced each quarter and the QNHS sample involves an overlap of 80% between consecutive quarters and 20% between the same quarter in consecutive years. The survey results are weighted to agree with population estimates broken down by age, sex and region. The population estimates for April of each year are published in a separate release.
Usual residence and de facto population concepts	Up to and including Q1 2006 the annual population estimates have been calculated using the de facto definition of population (i.e. all persons present in the state). From Q2 2006 onwards a new concept of usual residence will be used, i.e. all persons usually resident and present in the state plus absent persons who are usually resident in Ireland but are temporarily away from home and outside the state.
ILO Labour Force Classification	The primary classification used for the QNHS results is the ILO (International Labour Office) labour force classification. Labour Force Survey data on this basis have been published since 1988. The ILO classification distinguishes the following main subgroups of the population aged 15 or over: In Employment: Persons who worked in the week before the survey for one hour or more for payment or profit, including work on the family farm or business and all persons who had a job but were not at work because of illness, holidays etc. in the week. Unemployed: Persons who, in the week before the survey, were without work and available for work within the next two weeks, and had taken specific steps, in the preceding four weeks, to find work. Inactive Population (not in labour force): All other persons. The labour force comprises persons employed plus unemployed.

Participation, Employment and Unemployment Rates	<p>The rates given in this release are based on the ILO classification. The Participation Rate is the number of persons in the labour force expressed as a percentage of the total population aged 15 or over. The Employment Rate is the number of employed aged 15 to 64 expressed as a percentage of the total population aged 15 to 64. The Unemployment Rate is the number of unemployed expressed as a percentage of the total labour force.</p>
Duration of Unemployment	<p>The duration of unemployment is the length of time since a person last had a job or began looking for work, whichever is more recent. The long-term unemployment rate is the number of persons unemployed for one year or more expressed as a percentage of the total labour force.</p>
Underemployment	<p>In the LFS and in the first two quarters of the QNHS, a person who had a part-time job was classified as underemployed if he/she was looking and available for another part-time job or a full-time job.</p> <p>Since the April-June 1998 quarter, the category 'underemployed' has been based on a new question relating to the respondent's satisfaction with his/her current hours. Thus, a respondent who works in a part-time job is classified as 'underemployed' if he/she is looking and available for another job and has explicitly stated that the hours worked currently are 'too few'.</p> <p>This change has affected comparability (but only within the 'At work, part-time' category) between the January-March 1998 and subsequent quarters.</p>
Part-time Underemployment	<p>As of Q3 2010 a new methodology has been applied to the estimation of the level of part-time underemployment. This arises from work undertaken by the European statistical office (Eurostat) on defining a common set of indicators to supplement the unemployment rate in terms of unused labour capacity. The new part-time underemployment definition applied in this release is in line with the common EU definition.</p> <p>The new method of calculation based on ILO and Eurostat recommendations uses the following criteria to derive underemployment:</p> <ol style="list-style-type: none"> 1. Working part-time 2. Willing to work additional hours 3. Available to work additional hours <p>The previous calculation was based on a respondent meeting the following criteria:</p> <ol style="list-style-type: none"> 1. Working part-time (self-perception) 2. Working too few hours 3. Looking for either an additional or replacement job 4. Available to work in an additional or replacement job <p>The key difference between the two methods is the criteria of a respondent looking for work. The ILO/Eurostat recommendation does not require a respondent to be actively looking for work or additional hours to be considered underemployed. The exclusion of "looking for work" has a significant affect on the level of underemployment as for example in Q3 2010 the level of underemployment is almost six times higher using the new method.</p> <p>This new indicator is only available from quarter 3 2008 onwards as estimates prior to that quarter were all based on one single question which included the need for the person to be looking for additional work. From quarter 3 2008 the indicator is derived from a series of separate questions which allow this requirement to be excluded.</p>
Principal Economic Status Classification	<p>Results are also available using the Principal Economic Status (PES) classification which was used in the Labour Force Survey and the Census of Population. The PES classification is based on a single question in which respondents are asked what is their usual situation with regard to employment and given the following response categories:</p>

- At work
- Unemployed
- Student
- Engaged on home duties
- Retired
- Other.

This PES question is asked before the sequence of questions used to derive ILO status.

NACE Industrial Classification

The QNHS sectoral employment figures are based on the EU NACE Rev. 2 (Nomenclature generale des activites economique dans les Communautés europeennes) classification as defined in Council Regulation (EC) no 1893/2006. Fourteen NACE sub-categories are distinguished in Table 2b of this release. From Q1 2009 NACE Rev. 2 has been adopted as the primary classification of industrial sectors for use in QNHS outputs. From Q4 1997 to Q4 2008 the NACE Rev. 1.1 classification had been in use.

NACE Rev. 2 classification is more detailed than the NACE Rev. 1.1 classification. In particular more sections are now identified for services activities with the aim of better capturing economic activity within services. In cases where there is a direct one to one correspondence (e.g. section H 'Hotels and restaurants' in NACE Rev. 1.1 directly corresponds to section I 'Accommodation and food service activities' sector in NACE Rev. 2) then the two different series can be expected to be broadly comparable.

However, the series will not be exactly the same, as the process of applying NACE Rev. 2 involved a very detailed recoding process whereby the new NACE classification was applied to each record in each quarter. The detailed nature of this process means it should be expected that even in the case of a one to one correspondence between a NACE Rev. 2 and NACE Rev. 1.1 section; minor differences in the level of the estimates may be seen.

To facilitate analysis and the running of seasonal adjustment on the time series NACE Rev. 2 estimates have been produced from Q1 2004 onwards. It is not proposed to backdate the NACE Rev. 2 series further than Q1 2004. As of Q2 2009 only NACE Rev. 2 estimates will be published.

Interpretation of Sectoral Data

It should be noted that the CSO suggests some caution in interpretation of sectoral trends at this time, particularly in the Agriculture, forestry and fishing sector and the Education sector.

The CSO has undertaken an analysis of the trend in agricultural employment recorded and the analysis has shown that the trend has been influenced by the introduction of an updated sample which commenced in quarter 1 2009 and is fully in effect as of quarter 1 2010. However, in the absence of other contemporary information on the level of agricultural employment no firm conclusion can be drawn on a more realistic trend. The CSO proposes to revisit the issue when data from the Census of Agriculture 2010 and Census of Population 2011 become available. In the interim caution is warranted in the interpretation of the trend in agricultural employment.

Separately to the specific issues which arose in relation to the introduction of the new sample it should also be noted that all sample surveys are subject to sampling error given that they are based on a sample of all eligible respondents. The level of sampling error is primarily driven by the size of the achieved sample, or in the case of the QNHS the achieved number of interviews. The number of interviews achieved for the QNHS has been falling over time, and as such greater sampling error arises. The CSO monitors the quality of its estimates and is committed to informing users of any specific issues which arise with published estimates. In the case of Q3 2010 analysis indicates that the annual change presented for the Education sector is primarily driven by sampling issues rather than an underlying trend in employment within the sector, and caution is warranted in interpretation of the presented trend. This analysis indicates no notable effect on other published estimates. Users who have a specific interest in public sector employment should refer to table 1.1 within the text of this release and the related explanatory text.

The CSO will continue to inform users of any identified issues with data quality.

Occupations

Table 4 presents occupational data. The classification system used is based on the UK Standard Occupational Classification (SOC) with some modifications to reflect the Irish labour market. This classification was also used in the 2002 and 1996 Census of Population and has replaced the previous Census and Labour Force Survey occupations classification. The old and new classifications are not perfectly comparable. The 1996 Census of Population report on occupations (Census Volume 7) contains further information on comparing the classifications.

The data given in Table 4 is at a broad level, corresponding to SOC major groups. More detailed quarterly data is available on request from the CSO.

Family Units Table 24 presents family data. The definition used is as follows:

Family Unit

A family unit consists of either:

1. a married couple, or
2. a married couple and one or more of their never-married children, or
3. one parent and one or more of his or her never-married children, or
4. a couple living together (with never-married children, if any) who are not married to each other, where it is clear that the couple form a “de facto” family unit.

Households may contain more than one family unit or may contain a family together with other persons not in a family unit as defined above.

However, there are problems identifying some unmarried parents with children as separate family units. This happens particularly where one unmarried parent with one or more children lives with his/her parent(s) and the information recorded in the survey on the relationship to the reference person does not clearly identify the parent/child relationships. In such cases, the unmarried parent and children may not be identified as a distinct family unit. As a result, the number of family units consisting of unmarried parents with children is probably understated to some degree.

Grossing Effect

The QNHS grossing procedure aligns the distribution of persons covered in the survey with independently determined population estimates at the level of sex, five-year age group and region. This means that the adjustment factors assigned to each spouse within a family unit will differ. Accordingly, some male and female estimates in family tables, which might be expected to be identical, differ slightly. Another factor effecting the slight difference is that, in a small number of cases, gender was incorrectly recorded or coded.

Labour Supply Indicators

Table 20 contains three indicators of potential labour supply. These indicators take into account, in addition to the unemployed, groups outside the labour force who have indicated some interest in obtaining a job. These extra groups include discouraged workers (who are not looking for work as they believe they are not qualified or that no work is available) and other groups who want work but do not meet all the ILO criteria to be classified as unemployed. Persons who indicated that they were not available or not looking for work because they were in education were not included in the calculation of any of these indicators. The indicators are available back to 1988, when the ILO classification was first included in LFS reports.

Comparing the LFS and the QNHS

The LFS was conducted each year in April and involved the completion of a written questionnaire in each of the sample households. The QNHS, on the other hand, involves continuous surveying so that the results reflect the average situation over the course of three months. The LFS paper questionnaires have been replaced by laptop computers, allowing some key questions (such as existence of a job in the week before the survey, full-time versus part-time jobs) to be refined and improved. The main factors affecting comparability of the two surveys are:

- Seasonal effects on numbers employed and unemployed
- The change from a point-in-time to a continuous survey (survey reference period)
- Changes in the questionnaire, which has increased the observed level of labour force participation, particularly in part-time jobs.

Changes to Questions on Employment

Information on full-time and part-time jobs is also collected using a more direct approach in the QNHS. The relevant LFS question distinguished four response categories, relating to occasional and regular as well as to full-time and part-time jobs. These concepts are now asked separately and the question on full-time or part-time work is as follows:

'Thinking about the hours of work in the job, would you describe it as full-time or part-time?'

The main effect of these changes has been to elicit more information about part-time employment, so that the estimates of part-time employment are higher in the QNHS than in the LFS.

This change has also increased the proportion of respondents indicating part-time involvement in the workforce. The effect of these changes is to cause a once-off discontinuity between the LFS and QNHS results.

Seasonality

Seasonal factors do not affect annual comparisons of LFS/QNHS results. However, they do affect the sub-annual comparisons and the effects of seasonal variation in labour supply and demand are evident from the QNHS results.

Seasonal factors are most clearly visible in the results for the July-September quarter, when the number of persons in employment is at its highest. Unemployment also increases in that quarter, when more people are available and looking for work. Other summer seasonal effects can be seen in the sectoral employment figures (with strong results for retailing, hotels and restaurants) and in the lower number of students in summer. There is also evidence that employment and unemployment are both lower in the winter months.

**Seasonal Adjustment
Methodology**

The data from the QNHS was adjusted using the X-11-ARIMA procedure. This procedure is an adaptation of the U.S. Bureau of the Census X-11 seasonal adjustment programme developed by Statistics Canada.

The first task in the process is to identify whether the series being adjusted is best considered additive or multiplicative for seasonal adjustment purposes. All of the QNHS series analysed were found to be multiplicative.

Once the series has been identified as being either additive or multiplicative the method fits an ARIMA (Autoregressive Integrated Moving Average) model to the unadjusted series and then uses the model forecast to extend the unadjusted series. The extended series is then seasonally adjusted using the standard X-11 seasonal adjustment method. The extension of the series improves the estimation of the seasonal factors and reduces revisions to the seasonally adjusted series as new data becomes available. To be able to use X-11-ARIMA you must have at least 5 years data.

The essential difference between X-11 and X-11-ARIMA is the use of ARIMA (Autoregressive Integrated Moving Average) models to improve the adjustment at the end of the time series by extending the time series. In the ARIMA model identification phase an attempt to determine the type of underlying probabilistic process that governs the behaviour of the time series is made. The choice of ARIMA model in this process was restricted to the 5 pre-defined models which were identified by Statistics Canada as fitting the majority of well behaved time series.

NUTS2 and NUTS3 regions

The regional classifications in this release are based on the NUTS (Nomenclature of Territorial Units) classification used by Eurostat. The NUTS3 regions correspond to the eight Regional Authorities established under the Local Government Act, 1991 (Regional Authorities) (Establishment) Order, 1993, which came into operation on 1 January 1994. The NUTS2 regions, which were proposed by Government and agreed by Eurostat in 1999, are groupings of the NUTS3 regions. The composition of the regions is set out below.

Border, Midland and Western NUTS2 Region		Southern and Eastern NUTS2 Region	
Border	Cavan Donegal Leitrim Louth Monaghan Sligo	Dublin	Dublin City Dun Laoghaire-Rathdown Fingal South Dublin
Midland	Laois Longford Offaly Westmeath	Mid-East	Kildare Meath Wicklow
West	Galway City Galway County Mayo Roscommon	Mid-West	Clare Limerick City Limerick County North Tipperary
		South-East	Carlow Kilkenny South Tipperary Waterford City Waterford County Wexford
		South-West	Cork City Cork County Kerry

Monthly Standardised Unemployment Rates

While total number of persons on the Live Register cannot be directly compared to the total number of unemployed persons as presented in this release, the Live Register is used to estimate an updated standardised unemployment rate (SUR) each month. In November 2010, the latest month for which Live Register data has been published, the SUR was estimated at 13.5%, now revised to 13.2% as of this release.

SUR estimates are revised following the publication of the QNHS results each quarter and these revised data are available in table 1.3 on page 5. The re-estimated SUR series will be published with the Live Register for December 2010 in early January 2011.

Further information on the live register and the standardised unemployment rate along with full series of data is available on www.cso.ie.

Changes to Education Attainment question

Following consultation with users a new classification of educational attainment was introduced to the QNHS in Q2 2009. This classification is more detailed than that which was previously used. The main aim of the change was to ensure estimates could be produced in line with the National Framework of Qualifications (NFQ) which was not possible under the previously used classification. Specifically some of the previous answer categories related to multiple NFQ levels. The new classification has been specifically designed to ensure NFQ based estimates can now be produced.

In particular the new classification is more specific and detailed in relation to qualifications outside the core educational system (i.e. various types of diplomas, certificates, trade based qualifications etc). The new data is not directly comparable to the old series in particular for post leaving cert and third level qualifications where various qualifications are now more accurately classified.

For information on the framework see: <http://www.nfq.ie/nfq/en/>. For information on the ISCED97 classification see: http://www.uis.unesco.org/ev_en.php?ID=7433_201&ID2=DO_TOPIC.

QNHS Social Modules

While the main purpose of the QNHS is the production of quarterly labour force estimates, there is also a provision for the collection of data on social topics through the inclusion of special survey modules. The selection of the major national modules undertaken to date has been largely based on the results of a canvas of users (over 100 organisations) that was conducted by the CSO in 1996, 2002 and most recently 2009. The results of the canvas are presented to the National Statistics Board and they are asked to indicate their priorities for the years ahead.

The schedule for social modules in any given year is based on the following structure:

Quarter 1	Annual modules update (Disability, Pensions, Childcare, Accidents and Illness), Information, Communication and Technology (ICT) Survey
Quarter 2	EU module (always covered under EU legislation)
Quarter 3	National module
Quarter 4	National module

The table below outlines some of the social modules published to date in the QNHS

Reference Quarter	Social Module
Q2 2010	Cross border shopping
Q1 2010	Crime and victimisation
Q3 2009	Carers
Q2 2009	Union membership
Q2 2009	Cross border shopping
Q3 2008	Lifelong learning
Q2 2008	Educational attainment
Q1 2008	Working conditions
Q1 2008	ICT (information and communications technology) household survey
Q4 2007	Childcare
Q3 2007	Health status and health service utilisation
Q2 2007	Union membership
Q1 2007	Work-related accidents and illness (Q1 2003-Q1 2007)
Q1 2007	ICT household survey
Q4 2006	Crime and victimisation
Q3 2006	Social participation
Q3 2006	Sport and physical exercise
Q1 2006	ICT household survey
Q4 2005	Pension provision
Q4 2005	Special Saving Incentive Accounts (SSIAs)
Q3 2005	ICT household survey
Q3 2005	Recycling and energy conservation
Q2 2005	Reconciliation between work and caring responsibilities
Q1 2005	Childcare
Q4 2004	Equality
Q3 2004	ICT household survey
Q2 2004	Union membership
Q2 2004	Work organisation and working time
Q4 2003	Crime and victimisation
Q3 2003	Housing and households
Q3 2003	ICT household survey

Social modules yet to be published:

Reference Quarter	Social Module
Q1 2009	ICT household survey
Q2 2009	Entry of young people into the Labour Market
Q4 2009	Travel Module and Pensions Module
Q1 2010	ICT household survey
Q2 2010	Reconciliation between work and family life
Q3 2010	Health status and health service utilisation

Further Information

The following information on Labour Market statistics is available on the CSO website www.cso.ie: a full set of revised time series tables, further data in relation to QNHS social modules, methodology details and questionnaires. Special analyses can also be requested by emailing Labour@cso.ie.