

# 8

## Crime

- There were 103,924 headline offences in 2006, up from 102,258 in 2005.
- Sexual assaults against males account for over 25% of all sexual assault cases.
- There were 17,868 drink driving detections in 2006. This represented a rise of almost 34% on the 2005 figures.
- 14.6% of households in urban areas were victims of a crime compared with 6.3% of households in rural areas.
- In 2006, the majority of prisoners (26.2 %) were in the 30-39 age group.
- In 2006 there were 12,954 Gardaí, up from 12,265 in 2005.

## Contents

Introductory text	127
<b>Table 8.1</b> Indictable/headline offences and murders recorded	129
<b>Table 8.2</b> Victims of murder, manslaughter, assault and sexual offence by sex, 2006	130
<b>Table 8.3</b> Robberies and aggravated burglaries	130
<b>Table 8.4</b> Traffic offence detections	131
<b>Table 8.5</b> Applications under the Domestic Violence Act	132
<b>Table 8.6</b> Persons aged 18 and over classified by whether they were victims of crime	133
<b>Table 8.7</b> Persons aged 18 and over classified by their perception of crime	134
<b>Table 8.8</b> Households classified by whether they experienced crime, 2003 and 2006	135
<b>Table 8.9</b> Average daily number of prisoners in custody	136
<b>Table 8.10</b> Sentenced prisoners in custody by age and sex, 1 September 2006	136
<b>Table 8.11</b> Sentenced prisoners by length of sentence and sex, 1 September 2006	137
<b>Table 8.12</b> Defence Forces (permanent and reserve)	138
<b>Table 8.13</b> Numbers in each rank of the Defence Forces	139
<b>Table 8.14</b> Numbers in each rank of the Garda Síochána	139

## Introduction

The statistics in this chapter relate to a number of aspects of justice and defence. They have been obtained from the Garda Síochána, the Courts Service, the Prison Service, the Defence Forces and the Central Statistics Office. Results from the Quarterly National Household Survey (QNHS) ad hoc module on Crime and Victimization are also included.

Crime figures up to 1999 reflect a former classification of crimes as indictable/non-indictable. With the introduction of the PULSE information system in the Garda Síochána, a classification of crimes as headline/non-headline was introduced. The figures for 2000 onwards refer to this classification of headline crimes. While this reflects to a large extent what in the past was defined as indictable crime, the terms are not identical and so direct comparisons cannot be made between years prior to 2000 and subsequent years. Caution is required generally in looking at trends in crimes and offences over time, particularly when talking about the number of headline offences. There can be changes in recording rules and enforcement practises, and levels of reporting to the public. There were also changes in the definitions of offences.

The Quarterly National Household Survey (QNHS) is a large-scale, nationwide survey of houses in Ireland. While the primary purpose of the QNHS is to collect information on employment and unemployment it also includes modules each quarter on social topics of interest. A module on Crime and Victimization was included in the three months interviewing period from September to November 2006. This module was carried out in the same period in 1998 and 2003. The module contained over fifty questions on crime-related topics, divided into two main sections – household and individual questions.

## Technical Notes

### Table 8.1

The effect of a change in classification from indictable offences to headline offences is outlined in the chapter introduction.

### Tables 8.1, 8.2 and 8.3

Figures for 2006 are based on data received from the Garda Síochána at the end of quarter 2 2007. These figures may be updated in further CSO releases.

### Table 8.5

In some cases, Interim Barring Orders have been granted on foot of an application for Protection Orders and vice versa.

### Tables 8.6, 8.7 and 8.8

Tables 8.6, 8.7 and 8.8 provide an insight into the incidence of certain crime types in Ireland and are taken from the Quarterly National Household Survey (QNHS) quarter 4 2006 ad hoc module on Crime and Victimisation.

### Table 8.6

'Any crime' refers to victims of theft with or without violence or physical assault.

A person could be the victim of more than one crime, hence the 'Total' figure will not necessarily equal the sum of all crimes.

### Table 8.8

'Any crime' refers to victims of burglary, motor vehicle crime, theft of bicycles or vandalism.

### Table 8.9

Figures include Sentenced, Trial and Remand Prisoners.

### Table 8.10 and 8.11

Figures include Sentenced Prisoners only.

### Table 8.12 and 8.13

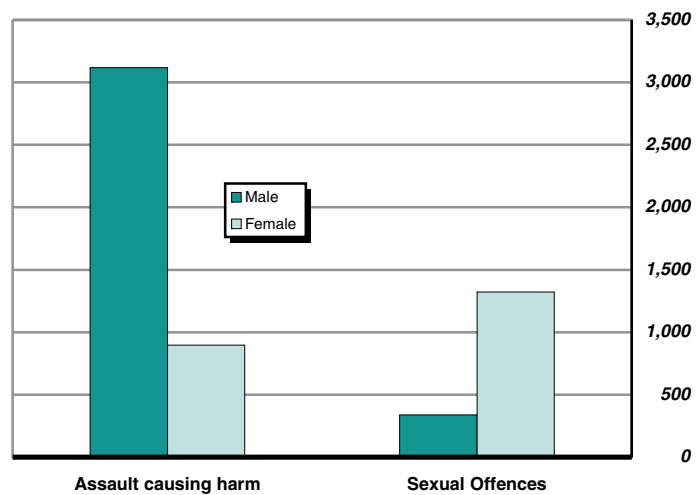
These figures are as at 31 December 2006.

**Table 8.1 Indictable/headline offences and murders recorded**

Year	Indictable/headline offences recorded	Number of murders
1950	12,231	14
1955	11,531	6
1960	15,375	5
1965	16,736	12
1970	30,756	18
1975	48,387	27
1980	72,782	23
1985	91,285	33
1990	87,658	27
1995	102,484	53
2000	73,276	56
2001	86,633	58
2002	106,415	59
2003	103,470	52
2004	99,257	46
2005	102,258	62
2006	103,924	68

Source: Garda Síochána and CSO

**Victims of assault and sexual offences by sex, 2006**



## Crime

**Table 8.2 Victims of murder, manslaughter, assault and sexual offence by sex, 2006**

Number

Offence	Male	Female	Total
<b>Murder/Manslaughter</b>	<b>55</b>	<b>13</b>	<b>68</b>
<b>Assault causing harm</b>	<b>3,118</b>	<b>897</b>	<b>4,015</b>
<b>Sexual offences</b>	<b>338</b>	<b>1,321</b>	<b>1,659</b>
Sexual assault	276	795	1,071
Aggravated sexual assault	3	15	18
Sexual offence involving mentally impaired person	6	9	15
Gross indecency	8	13	21
Buggery	32	4	36
Unlawful carnal knowledge	1	47	48
Rape Section 4	12	77	89
Rape of a female	0	354	354
Incest	0	7	7

Source: CSO

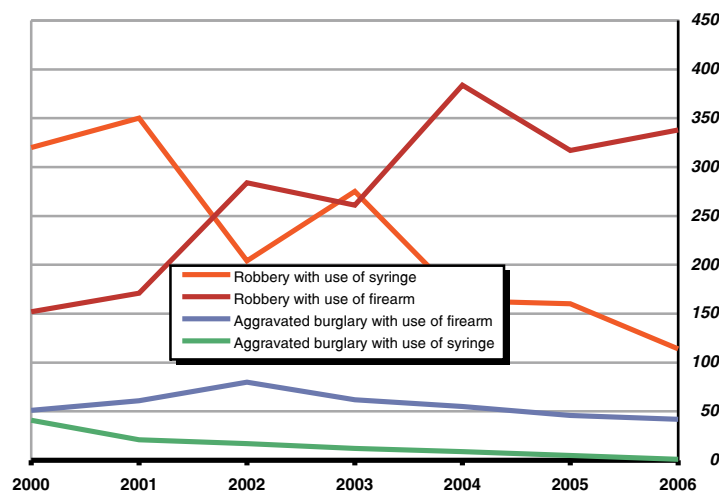
**Table 8.3 Robberies and aggravated burglaries**

Number

Offence	1997	1998	1999	2000	2001	2002	2003	2004	2005	2006
<b>Involving firearms</b>	<b>252</b>	<b>221</b>	<b>290</b>	<b>203</b>	<b>232</b>	<b>364</b>	<b>323</b>	<b>439</b>	<b>363</b>	<b>380</b>
Robbery with use of firearm	88	61	133	152	171	284	261	384	317	338
Aggravated burglary with use of firearm	164	160	157	51	61	80	62	55	46	42
<b>Involving use of syringe</b>	<b>893</b>	<b>442</b>	<b>384</b>	<b>361</b>	<b>371</b>	<b>221</b>	<b>287</b>	<b>172</b>	<b>165</b>	<b>115</b>
Robbery with use of syringe	590	318	274	320	350	204	275	163	160	114
Aggravated burglary with use of syringe	303	124	110	41	21	17	12	9	5	1

Source: Garda Síochána and CSO

**Number of robberies and aggravated burglaries**

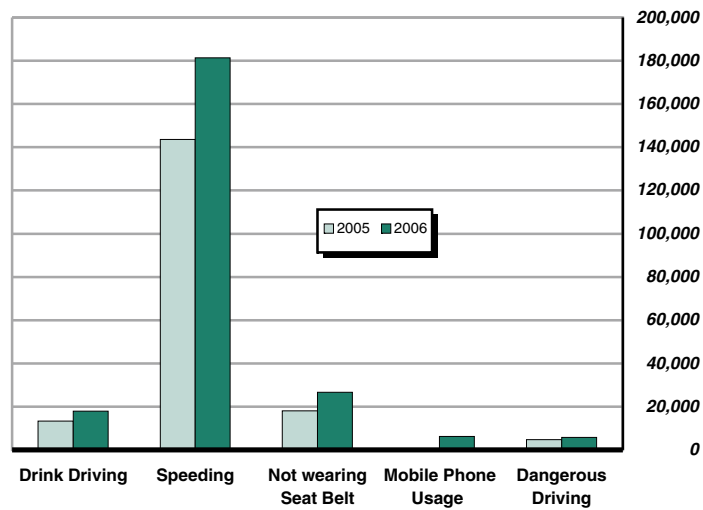


**Table 8.4 Traffic offence detections**

Offence	Number	
	2005	2006
Drink Driving	13,370	17,868
Speeding	143,651	181,335
Seat Belt wearing non-compliance	18,084	26,687
Mobile Phone Usage (Offence since 1st September, 2006)	n/a	6,171
Dangerous Driving	4,786	5,810

Source: Garda Síochána Annual Report

**Traffic offence detections**



## Crime

**Table 8.5 Applications under the Domestic Violence Act**

	1999	2000	2001	2002	2003	2004	2005	2006
<i>Number</i>								
<b>Barring orders</b>								
Applications	4,668	4,908	4,470	4,067	3,586	3,210	3,183	3,132
Granted	2,219	2,319	2,067	1,740	1,575	1,295	1,265	1,357
<b>Protection orders</b>								
Applications	3,619	4,381	4,263	3,677	3,109	3,054	2,850	3,137
Granted	3,390	3,467	3,711	3,248	2,814	2,810	2,622	2,845
<b>Safety orders</b>								
Applications	2,039	2,336	2,903	2,814	2,557	2,611	2,866	3,050
Granted	970	988	1,232	1,187	1,108	987	1,037	1,221
<b>Interim barring orders</b>								
Applications	1,120	506	1,159	852	629	698	622	605
Granted	1,002	415	1,007	706	531	604	550	544

Source: Courts Service

**Percentage of people who were victims of theft (with or without violence) or physical assault**

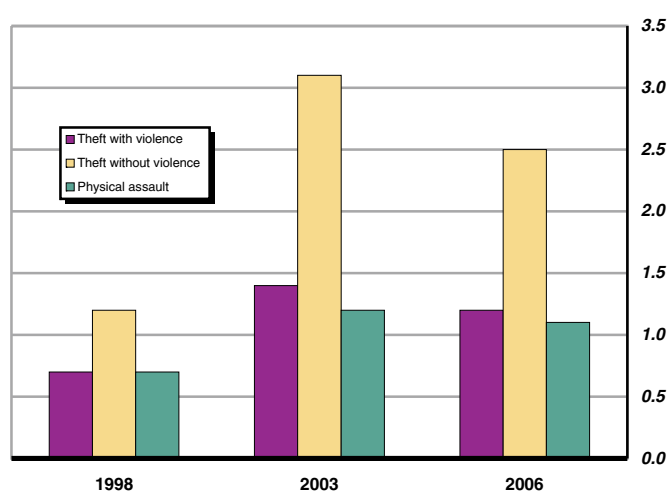


Table 8.6 Persons aged 18 and over classified by whether they were victims of crime

	Total		Theft with violence		Theft without violence		Physical assault		Total victims of any crime	
	'000	%	'000	%	'000	%	'000	%	'000	%
<b>State</b>										
1998	2,690.7		17.5	0.7	31.4	1.2	17.9	0.7	63.5	2.4
2003	2,994.6		41.1	1.4	91.5	3.1	34.5	1.2	155.6	5.2
2006	3,243.8		38.7	1.2	82.5	2.5	37.1	1.1	150.7	4.6
<b>Males</b>										
1998	1,319.5		9.0	0.7	13.3	1.0	12.6	1.0	32.8	2.5
2003	1,472.1		24.5	1.7	47.3	3.2	27.8	1.9	90.9	6.2
2006	1,607.8		24.4	1.5	45.3	2.8	28.5	1.8	91.8	5.7
<b>Females</b>										
1998	1,371.2		8.5	0.6	18.2	1.3	5.2	0.4	30.7	2.2
2003	1,522.5		16.6	1.1	44.2	2.9	6.7	0.4	64.8	4.3
2006	1,636.0		14.3	0.9	37.2	2.3	8.6	0.5	58.9	3.6
<b>18-24 years</b>										
1998	434.5		6.1	1.4	9.4	2.2	7.5	1.7	21.4	4.9
2003	459.1		13.8	3.0	26.1	5.7	15.3	3.3	49.8	10.8
2006	463.6		10.7	2.3	21.1	4.6	11.6	2.5	41.2	8.9
<b>25-44 years</b>										
1998	1,074.6		6.8	0.6	12.7	1.2	7.9	0.7	26.4	2.5
2003	1,221.4		18.2	1.5	38.9	3.2	13.7	1.1	66.4	5.4
2006	1,362.2		16.9	1.2	37.6	2.8	18.4	1.4	69.0	5.1
<b>45-64</b>										
1998	760.2		3.0	0.4	6.9	0.9	2.1	0.3	11.4	1.5
2003	865.9		6.8	0.8	20.6	2.4	4.9	0.6	30.8	3.6
2006	941.1		8.3	0.9	18.4	2.0	6.5	0.7	32.1	3.4
<b>65+ years</b>										
1998	421.4		1.6	0.4	2.4	0.6	0.3	0.1	4.3	1.0
2003	448.1		2.4	0.5	6.0	1.3	0.7	0.2	8.6	1.9
2006	476.8		2.8	0.6	5.3	1.1	0.6	0.1	8.3	1.7

Source: CSO

## Crime

**Table 8.7 Persons aged 18 and over classified by their perception of crime**

%

	Very serious problem	Serious problem	Fairly serious problem	Not a serious problem	Not a problem	Total
<b>Region</b>						
1998	38.3	38.2	20.8	2.5	0.3	<b>100.0</b>
2003	46.5	33.9	17.0	2.3	0.3	<b>100.0</b>
2006	45.9	34.9	16.2	2.7	0.3	<b>100.0</b>
<b>Males</b>						
1998	32.5	39.8	24.0	3.3	0.4	<b>100.0</b>
2003	41.6	35.2	19.6	3.2	0.4	<b>100.0</b>
2006	39.9	36.5	19.3	3.9	0.5	<b>100.0</b>
<b>Females</b>						
1998	43.8	36.6	17.7	1.7	0.2	<b>100.0</b>
2003	51.2	32.7	14.5	1.5	0.2	<b>100.0</b>
2006	51.8	33.4	13.1	1.6	0.1	<b>100.0</b>
<b>18-24 years</b>						
1998	28.3	40.2	27.4	3.7	0.5	<b>100.0</b>
2003	32.6	38.8	23.9	4.2	0.5	<b>100.0</b>
2006	30.7	37.8	25.0	5.9	0.7	<b>100.0</b>
<b>25-44 years</b>						
1998	35.3	39.7	22.2	2.5	0.3	<b>100.0</b>
2003	42.1	35.9	18.9	2.7	0.3	<b>100.0</b>
2006	40.5	37.1	18.5	3.5	0.3	<b>100.0</b>
<b>45-64 years</b>						
1998	42.0	37.1	18.6	2.1	0.2	<b>100.0</b>
2003	52.7	31.7	14.1	1.4	0.2	<b>100.0</b>
2006	52.3	33.8	12.6	1.2	0.1	<b>100.0</b>
<b>65+ years</b>						
1998	49.6	34.1	14.4	1.6	0.2	<b>100.0</b>
2003	60.7	27.9	10.2	1.1	0.1	<b>100.0</b>
2006	63.0	28.3	8.0	0.5	0.1	<b>100.0</b>

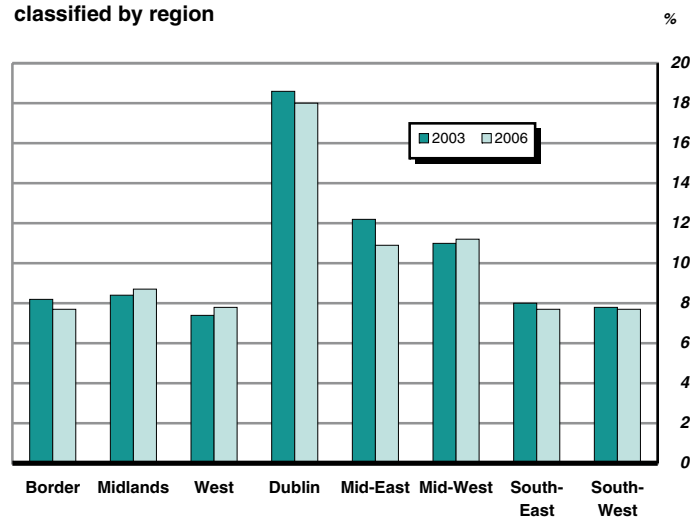
Source: CSO

**Table 8.8 Households classified by whether they experienced crime, 2003 and 2006**

	2003				2006			
	All households	Household burglary	Vandalism	Victims of any crime	All households	Household burglary	Vandalism	Victims of any crime
	'000	%	%	%	'000	%	%	%
<b>All households</b>	<b>1,394.3</b>	<b>3.4</b>	<b>4.8</b>	<b>11.7</b>	<b>1,513.8</b>	<b>3.2</b>	<b>4.8</b>	<b>11.3</b>
<b>Region</b>								
Border	154.3	1.9	4.4	8.2	166.6	1.7	4.1	7.7
Midland	79.7	4.4	2.3	8.4	88.4	4.2	2.8	8.7
West	139.1	1.9	3.2	7.4	151.2	1.9	3.4	7.8
Dublin	400.1	4.8	7.8	18.6	428.0	4.4	8.1	18.0
Mid-East	140.7	3.9	4.9	12.2	154.6	3.9	3.6	10.9
Mid-West	121.1	3.2	4.0	11.0	132.4	3.5	5.1	11.2
South-East	150.4	3.6	2.5	8.0	167.4	3.3	2.5	7.7
South-West	208.8	1.8	3.5	7.8	225.2	1.9	3.1	7.7
<b>Household composition</b>								
1 adult, no children	300.3	3.3	4.0	9.1	331.7	3.2	4.1	8.9
2 adults, no children	349.3	3.1	4.5	10.1	388.1	3.2	4.5	9.8
3 or more adults, no children	264.1	3.3	4.9	13.0	284.1	2.9	5.2	12.5
1 adult with children	52.8	5.3	9.5	17.8	60.4	3.3	7.8	14.6
2 adults with 1-3 children	263.4	3.2	5.1	12.6	284.2	3.4	5.1	12.8
Other households with children	164.3	3.8	4.9	14.1	165.2	3.6	5.0	14.0
<b>Urban/rural location</b>								
Urban areas	862.8	3.9	6.6	14.8	912.8	3.7	6.7	14.6
Rural areas	531.4	2.5	2.0	6.5	601.0	2.5	2.0	6.3

Source: CSO

**Percentage of households that were victims of crime, classified by region**



## Crime

**Table 8.9 Average daily number of prisoners in custody**

Institution	Number									
	1997	1998	1999	2000	2001	2002	2003	2004	2005	2006
Arbour Hill	139	139	138	139	135	137	138	138	138	138
Castlerea	25	109	195	190	186	193	195	210	210	216
Cloverhill	–	–	–	213	374	386	375	392	391	404
Cork	268	262	271	267	274	267	268	274	257	254
Curragh	72	94	93	94	98	92	98	8	–	–
Fort Mitchel	101	101	100	89	95	84	94	6	–	–
Limerick (male)	132	182	226	225	171	171	169	247	253	267
Limerick (female)	12	12	14	13	14	16	16	13	15	17
Loughan House	70	48	56	66	72	70	71	72	74	82
Midlands	–	–	–	–	241	375	384	439	426	433
Mountjoy (male)	650	729	826	723	504	441	460	485	488	482
Mountjoy (female)	51	59	70	59	82	88	81	84	87	89
Portlaoise	164	155	148	167	145	137	128	123	121	114
St. Patrick's	208	187	194	193	206	179	188	198	187	187
Shanganagh Castle	48	41	39	28	27	23	–	–	–	–
Shelton Abbey	47	47	46	25	27	47	50	49	51	51
Training Unit	85	85	87	89	89	91	86	87	93	92
Wheatfield	350	360	368	368	372	368	375	374	360	366
<b>Total</b>	<b>2,422</b>	<b>2,610</b>	<b>2,871</b>	<b>2,948</b>	<b>3,112</b>	<b>3,165</b>	<b>3,176</b>	<b>3,199</b>	<b>3,151</b>	<b>3,192</b>

Source: Irish Prison Service

**Table 8.10 Sentenced prisoners in custody by age and sex, 1 September 2006**

Age	Number		
	Male	Female	Total
15-16	4	0	4
17-20	318	10	328
21-24	521	7	528
25-29	509	18	527
30-39	646	28	674
40-49	318	7	325
50 and over	186	5	191
<b>Total</b>	<b>2,502</b>	<b>75</b>	<b>2,577</b>

Source: Irish Prison Service

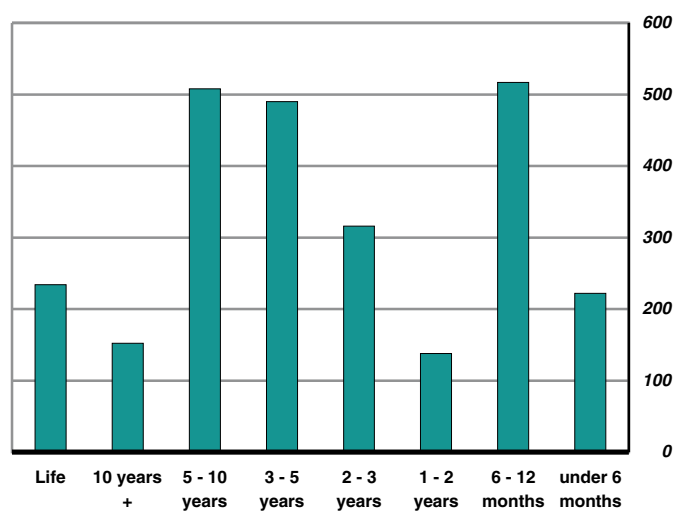
**Table 8.11 Sentenced prisoners by length of sentence and sex, 1 September 2006**

Number

Sentence	Male	Female	Total
Life	229	5	<b>234</b>
10 years or more	150	2	<b>152</b>
5 up to 10 years	501	7	<b>508</b>
3 up to 5 years	477	13	<b>490</b>
2 up to 3 years	307	9	<b>316</b>
1 up to 2 years	130	8	<b>138</b>
6 - 12 months	503	14	<b>517</b>
under 6 months	205	17	<b>222</b>
<b>Total</b>	<b>2,502</b>	<b>75</b>	<b>2,577</b>

Source: Irish Prison Service

**Length of sentence of prisoners, 1st September 2006**



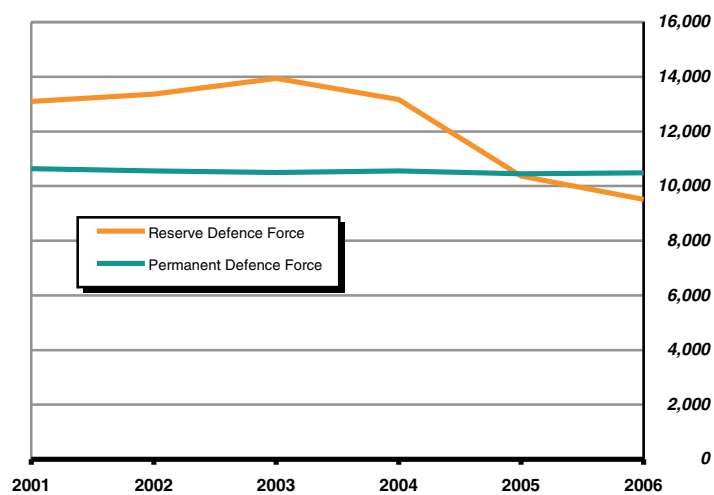
## Crime

**Table 8.12 Defence Forces (permanent and reserve)**

Year	Number	
	Permanent Defence Force	Reserve Defence Force
1960	8,965	24,569
1965	8,199	21,946
1970	8,574	20,253
1975	12,059	17,221
1980	13,383	19,249
1985	13,778	16,358
1990	13,233	15,982
1995	12,742	16,188
2000	10,958	13,967
2001	10,632	13,097
2002	10,559	13,365
2003	10,498	13,941
2004	10,551	13,167
2005	10,445	10,368
2006	10,479	9,506

Source: Defence Forces

**Numbers in the Defence Forces**



**Table 8.13 Numbers in each rank of the Defence Forces**

Rank	1999	2000	2001	2002	2003	2004	2005	2006
<b>Commissioned Officers</b>	<b>1,296</b>	<b>1,246</b>	<b>1,243</b>	<b>1,270</b>	<b>1,303</b>	<b>1,336</b>	<b>1,348</b>	<b>1,360</b>
Lieutenant-General	1	1	1	1	1	1	1	1
Major-General	2	3	3	3	3	2	2	2
Brigadier-General	9	7	8	9	8	8	8	8
Colonel	36	32	37	38	41	42	43	43
Lieutenant-Colonel	133	130	131	140	145	151	149	153
Commandant	434	444	440	442	423	429	423	401
Captain	434	392	355	327	324	336	365	393
Lieutenant	176	165	174	211	257	234	235	239
2nd Lieutenant	71	72	94	99	101	133	122	120
<b>Non-Commissioned Officers</b>	<b>4,102</b>	<b>4,117</b>	<b>3,985</b>	<b>3,962</b>	<b>3,967</b>	<b>3,960</b>	<b>3,934</b>	<b>3,919</b>
Sergeant-Major	40	45	48	49	47	47	46	45
Battalion Quartermaster-Sergeant	46	48	51	48	52	52	53	48
Company Sergeant	229	236	248	265	271	256	260	263
Company Quartermaster-Sergeant	293	273	258	279	278	279	278	271
Sergeant	1,346	1,336	1,291	1,354	1,395	1,364	1,383	1,354
Corporal	2,148	2,179	2,089	1,967	1,924	1,962	1,914	1,938
Private	5,715	5,476	5,296	5,194	5,090	5,119	5,038	5,088
Cadet	96	119	108	133	138	136	125	112
<b>TOTAL PERMANENT DEFENCE FORCE</b>	<b>11,209</b>	<b>10,958</b>	<b>10,632</b>	<b>10,559</b>	<b>10,498</b>	<b>10,551</b>	<b>10,445</b>	<b>10,479</b>
<b>Total Reserve Defence Force</b>	<b>14,514</b>	<b>13,967</b>	<b>13,097</b>	<b>13,365</b>	<b>13,941</b>	<b>13,167</b>	<b>10,368</b>	<b>9,506</b>
Reserve of Officers (First Line)	203	194	179	186	179	177	177	155
Reserve of Men (First Line)	280	283	287	267	230	223	224	217
Reserve (Second Line) All Ranks	14,031	13,490	12,631	12,912	13,532	12,767	9,967	9,134

Source: Defence Forces

**Table 8.14 Numbers in each rank of the Garda Síochána**

Year	Number									
	1997	1998	1999	2000	2001	2002	2003	2004	2005	2006
Commissioner ranks	12	13	13	13	13	13	13	14	15	14
Chief Superintendents	44	46	46	46	47	47	47	47	47	46
Superintendents	163	168	168	169	170	171	173	168	173	166
Inspectors	263	262	263	293	289	294	294	291	289	287
Sergeants	1,844	1,866	1,876	1,897	1,933	1,928	1,946	1,950	1,926	1,945
Gardaí	8,462	8,880	9,092	9,222	9,362	9,447	9,545	9,739	9,815	10,496
<b>Total</b>	<b>10,788</b>	<b>11,235</b>	<b>11,458</b>	<b>11,640</b>	<b>11,814</b>	<b>11,900</b>	<b>12,018</b>	<b>12,209</b>	<b>12,265</b>	<b>12,954</b>

Source: Garda Síochána

