



**Central Statistics Office**  
An Phríomh-Oifig Staidrimh

# Vital Statistics

## First Quarter

2009

### **Vital Statistics First Quarter 2009**

Information on the number of births in this report has subsequently been revised. Overall figures are corrected in Vital Statistics Second Quarter 2011 report. Revised tables are available at

<http://www.cso.ie/px/pxeirestat/statire/SelectTable/Omrade0.asp?Planguage=0>

Published by the Stationery Office, Dublin, Ireland.

To be purchased from the:

Central Statistics Office, Information Section, Skehard Road, Cork,

Government Publications Sales Office, Sun Alliance House,  
Molesworth Street, Dublin 2,

or through any bookseller.

Compiled by the Central Statistics Office on behalf of the Department of Health and Children.

© Government of Ireland 2009

Material compiled and presented by  
Central Statistics Office.

Reproduction is authorised, except for commercial  
purposes, provided the source is acknowledged.

ISSN 0790-7710

ISBN 978-1-4064-2345-7

# Contents

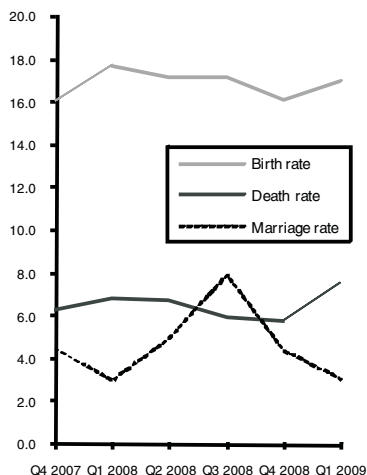
## First Quarter 2009

	<b>Page</b>
<b>Commentary</b>	4
<b>Tables</b>	
Table 1	Marriages, births, deaths and natural increase 8
Table 2	Annual marriage, birth, death and natural increase rates per 1,000 population 9
Table 3	Births registered, classified by area of residence of mother 10
Table 4	Births registered, classified by age of mother and previous number of liveborn children 11
Table 5	Number and percentage of births within and outside marriage, classified by age of mother 12
Table 6	Number and percentage of births registered within and outside marriage, classified by area of residence of mother 13
Table 7	Births registered, classified by area of residence and age of mother 14
Table 8	Births registered outside marriage, classified by area of residence and age of mother 15
Table 9	Deaths registered by county of residence of deceased 16
Table 10	Deaths registered by cause of death and county of residence of deceased 17
Table 11	Deaths registered classified by cause and age group 18
Table 12	Male deaths registered, classified by cause and age group 20
Table 13	Female deaths registered classified by cause and age group 22
Table 14	Infant and neonatal mortality by area of residence of deceased 24
<b>Appendix</b>	
	Glossary of terms 26
	Causes of death Eurostat shortlist (August 1998) 27
	Estimated population classified by sex and age group, 2003-2008 28

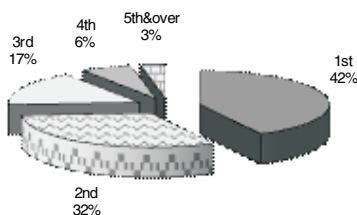
# First Quarter 2009

## Commentary

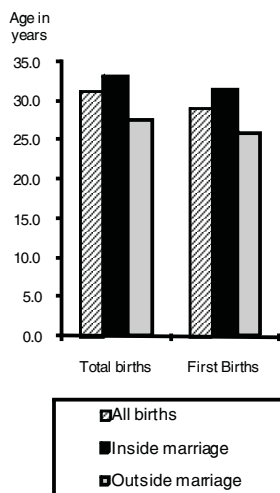
**Fig. 1 Annual birth, death and marriage rates per 1,000 population**



**Fig. 2 Birth Order Q1 2009**



**Fig. 3 Average age at maternity Q1 2009**



### Introduction

This report has been prepared by the Central Statistics Office for the Minister for Health and Children in accordance with the provisions of Section 2 of the Vital Statistics and Births, Deaths and Marriages Registration Act, 1952 and Section 73 of the Civil Registration Act 2004. Please see note in methodology in relation to updates to ICD10 introduced in this publication.

### Births

There were 18,787 births registered in quarter 1 of 2009, 9,590 males and 9,197 females, a decrease of 367 on the quarter 1 figure of 2008. The quarter 1 2009 total is 34.3% higher than the comparable quarter in 2000 when 13,984 babies were registered. See tables 1 and 3.

The 18,787 births represent an annual birth rate of 17.0 per 1,000 of the population, 0.7 below quarter 1 of 2008. This rate is 2.1 per 1,000 population higher than in 2000. See table 2 and fig. 1.

### Birth order

A total of 7,897 births (42.2%) were to first time mothers in quarter 1 of 2009. This compares to 5,693 (40.9%) first births registered in quarter 1 2000. Second time mothers had 5,958 births (31.9%). See table 4 and fig. 2.

### Age of mothers

The average age of mothers for births registered in quarter 1 2009 was 31.2 years, an increase of 0.1 in quarter 1 2008, and 1.2 years more than in quarter 1 2000. The average age of mothers having their first child in quarter 1 2009 was 29 years. See tables 1 and 7 and fig. 3.

### Births outside marriage

There were 6,405 births registered as outside marriage in quarter 1 of 2009. This accounted for 34.1% of all births, an increase of 0.3% on quarter 1 2008. The highest percentage of births outside marriage occurred in Limerick City at 53%, while the lowest percentage was in Galway County at 23%. In quarter 1 2000, 4,656 births were registered outside marriage or 33.3% of all births. See table 6.

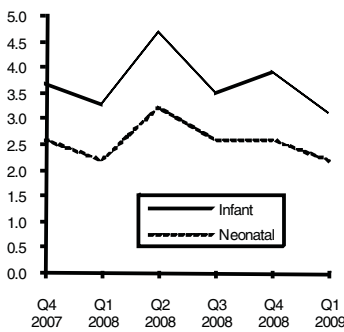
### Deaths

There were 8,419 deaths registered in quarter 1 2009, 4,326 males and 4,093 females. This represents an annual death rate of 7.6 per 1,000 population. The quarter 1 2009 total is almost 12% higher than in 2008 when 7,525 deaths were registered. See tables 1, 9 and fig. 1.

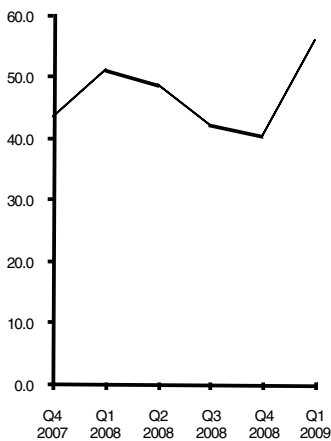
### Age at death

There were 59 infant deaths registered in quarter 1 2009 giving an infant mortality rate of 3.1 deaths per 1,000 live births. This compares with 63 infant deaths registered in quarter 1 2008, 3.3 per 1,000 live births and 86 infant deaths registered in quarter 1 2000, 6.1 per 1,000 live births. Neonatal deaths are deaths of infants at ages under 4 weeks. There were 41 neonatal deaths registered in quarter 1 2009, a neonatal mortality rate of 2.2 deaths per 1,000 live births. See tables 1, 2 and fig. 4.

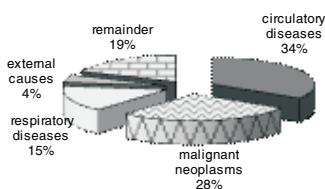
**Fig. 4 Infant and neonatal mortality rates per 1,000 live births**



**Fig. 5 Death rates for ages 65 & over per 1,000 relevant population**



**Fig. 6 Principal causes of death Q1 2009**



There were 6,739 deaths of persons aged 65 and over registered in quarter 1 2009. This represents an annual death rate of 56 per 1,000 population aged 65 and over. See tables 1, 2 and fig. 5.

#### Cause of death

- **Diseases of the Circulatory System:**

Diseases of the Circulatory System accounted for 2,855 deaths, or an annual rate of 2.6 per 1,000 population. Of these, 1,497 were due to Ischaemic Heart Disease and 629 to Cerebrovascular Disease. See table 11 and fig. 6.

- **Malignant Neoplasms:**

There were 2,319 deaths from malignant neoplasms. This is equivalent to an annual rate of 2.1 per 1,000 population. See table 11 and fig. 6.

- **Diseases of the Respiratory System:**

Deaths from pneumonia numbered 495; chronic lower respiratory disease accounted for 537 deaths and 271 deaths resulted from other respiratory diseases. See table 11 and fig. 6.

#### Natural increase

The natural increase in the population (births minus deaths) for quarter 1 2009 was 10,368. This represents a rate of 9.4 per 1,000 population, 1.3 below quarter 1 of 2008. See tables 1 and 2.

#### Marriages

The number of marriages registered during the quarter was 3,450, equivalent to an annual marriage rate of 3.1 per 1,000 population, 0.1 above the corresponding quarter of 2008. The quarter 1 2009 total is 56.8% higher than in quarter 1 2000 when 2,200 marriages were registered. See tables 1, 2 and fig. 1.

#### Population

The estimated population in April 2008 was 4,422,100.

#### Methodology

All figures in this report are classified by quarter of registration. Delay in the registration of some births, deaths and marriages result in them being included in a later period in these quarterly reports.

#### Changes in methodology

The extension of the Limerick City boundary, which came into operation on 1st March 2008, has been taken into account in the compilation of the statistics from quarter 2 of 2008. As a result, data for Limerick City and County are not directly comparable with any quarter prior to quarter 2 2008.

This publication continues with the 3 major changes in the methods by which mortality statistics are compiled. These changes were introduced in the Vital Statistics First Quarter 2007 publication.

- 1) Underlying Cause of Death is classified according to International Classification of Diseases, Version 10 (ICD10) instead of to International Classification of Diseases, Version 9 (ICD9). In addition, this and future publications will incorporate certain official updates to ICD-10. In particular, mental and behavioural disorders due to psychoactive substance use (F10-F19), with mention of intestinal infectious diseases (A00-A09), accidental, intentional self and undetermined intent poisoning

by and exposure to noxious substances (X40-X49, X60-X69, Y10-Y19) or assault by chemical or noxious substance (X85-X90), are now coded to the latter.

<http://www.who.int/classifications/icd/OfficialWHOUpdatesCombined1996-2008VOLUME2.pdf>

- 2) Deaths where there was not an inquest have been coded using the automated coding system developed by the US National Centre for Health Statistics (NCHS). Previously the Underlying Cause of Death was chosen manually for all deaths.
- 3) All deaths registered in the Quarter have been included in the statistics, in some cases with a provisional cause of death. Previously the practice was not to include deaths in the quarterly statistics until the cause of death had been definitely established.

Because of these changes, caution should be taken in directly comparing these mortality statistics with those of previous quarters. Many countries have found that moving to ICD10 does affect certain specific categories of causes of death. In particular, a significant drop in the number of deaths attributed to pneumonia and bronchopneumonia has been observed in some countries after moving to ICD10. These deaths were instead assigned to other conditions included on the death certificate.

The effect of the third change above has been to increase the number of deaths in our statistics as compared with previous years. Statistics for deaths due to external causes are particularly affected by this change. The previous method meant that some deaths were included in a later quarter of the year from when they had been registered, because of the delay involved in establishing a definite cause of death.

## **Tables**

**Table 1 Marriages, births, deaths and natural increase**

	Marriages <sup>1</sup>	Live Births				Deaths <sup>2</sup>				Natural Increase
		Total	First	Outside marriage	Average Age	Total	Infant	Neonatal	65 & over	
<b>Quarter 1</b>										
2000	2,200	13,984	5,693	4,656	30.0	9,804	86	59	8,062	4,180
2001	2,168	14,785	5,963	4,877	30.1	8,408	81	56	6,747	6,377
2002	2,484	14,972	6,127	4,877	30.3	7,749	73	51	6,281	7,223
2003	2,571	15,238	6,158	5,080	30.3	7,756	67	52	6,259	7,482
2004	2,676	15,599	6,082	5,181	30.7	7,873	72	56	6,347	7,726
2005	2,892	15,334	6,290	5,147	30.9	7,352	65	47	5,920	7,982
2006	3,267	15,958	6,449	5,481	30.9	7,320	56	36	6,040	8,638
2007	3,399	17,473	7,226	5,905	31.1	7,910	48	37	6,326	9,563
2008	3,242	19,154	8,088	6,480	31.1	7,525	63	42	6,011	11,629
2009	3,450	18,787	7,897	6,405	31.2	8,419	59	41	6,739	10,368
<b>Quarter 2</b>										
2000	4,670	13,794	5,427	4,260	30.3	7,650	77	52	5,974	6,144
2001	4,533	14,303	5,615	4,307	30.5	7,260	74	55	5,808	7,043
2002	4,810	15,247	5,858	4,672	30.5	7,680	91	64	6,074	7,567
2003	4,827	15,582	6,095	4,689	30.6	7,203	83	59	5,625	8,379
2004	4,719	15,535	5,897	4,874	30.8	6,881	74	53	5,351	8,654
2005	5,374	15,306	5,922	4,810	31.1	7,349	70	52	5,826	7,957
2006	5,094	15,979	6,315	5,056	31.1	6,967	65	44	5,488	9,012
2007	5,536	17,127	6,926	5,428	31.2	6,902	60	34	5,394	10,225
2008	5,370	19,040	7,712	6,174	31.2	7,569	90	62	5,857	11,471
2009										
<b>Quarter 3</b>										
2000	7,593	13,967	5,641	4,451	30.2	6,832	89	54	5,372	7,135
2001	7,557	14,688	5,901	4,472	30.3	6,974	97	67	5,403	7,714
2002	7,580	15,593	6,333	4,855	30.4	6,941	68	50	5,391	8,652
2003	7,996	15,909	6,240	4,981	30.6	6,639	85	68	5,147	9,270
2004	8,168	15,605	6,171	5,100	30.8	6,473	72	43	5,123	9,132
2005	8,347	16,170	6,548	5,101	30.9	6,380	50	33	4,919	9,790
2006	8,341	16,920	6,891	5,541	31.0	6,657	58	46	5,146	10,263
2007	8,733	18,554	7,636	6,019	31.1	6,455	48	32	4,976	12,099
2008	8,765	18,991	7,960	6,286	31.1	6,674	67	50	5,108	12,317
2009										
<b>Quarter 4</b>										
2000	4,705	12,494	5,236	3,868	30.2	6,829	70	53	5,324	5,665
2001	4,988	14,106	5,915	4,393	30.3	7,170	85	57	5,422	6,936
2002	5,682	14,709	5,989	4,411	30.5	6,978	74	49	5,378	7,731
2003	4,908	14,788	5,883	4,563	30.7	7,225	76	52	5,568	7,563
2004	5,056	14,945	5,975	4,783	30.9	6,924	82	62	5,253	8,021
2005	4,742	14,232	5,861	4,470	31.1	6,360	59	45	4,827	7,872
2006	5,139	15,380	6,456	5,217	31.0	6,535	58	42	4,946	8,845
2007	4,876	17,466	7,481	5,818	31.1	6,783	65	46	5,128	10,683
2008	4,866	17,880	7,608	5,904	31.2	6,424	70	46	4,871	11,456
2009										
<b>Total</b>										
2000	19,168	54,239	21,997	17,235	30.2	31,115	322	218	24,732	23,124
2001	19,246	57,882	23,394	18,049	30.3	29,812	337	235	23,380	28,070
2002	20,556	60,521	24,307	18,815	30.4	29,348	306	214	23,124	31,173
2003	20,302	61,517	24,376	19,313	30.6	28,823	311	231	22,599	32,694
2004	20,619	61,684	24,125	19,938	30.8	28,151	300	214	22,074	33,533
2005	21,355	61,042	24,621	19,528	31.0	27,441	244	177	21,492	33,601
2006	21,841	64,237	26,111	21,295	31.0	27,479	237	168	21,620	36,758
2007	22,544	70,620	29,269	23,170	31.1	28,050	221	149	21,824	42,570
2008	22,243	75,065	31,368	24,844	31.1	28,192	290	200	21,847	46,873
2009										

<sup>1</sup> 2002, 2005 and 2006 marriage figures are final. All other marriage figures are subject to revision.<sup>2</sup> See 'Commentary' for changes in methodology effective from 2007.

**Table 2 Annual marriage, birth, death and natural increase rates per 1,000 population**

	Marriages	Live Births			Deaths				Natural Increase
		Total	% First births <sup>1</sup>	% Outside marriage	Total	Infant Mortality <sup>2</sup>	Neonatal Mortality <sup>3</sup>	65 & over	
<b>Quarter 1</b>									
2000	2.4	14.9	40.9	33.3	10.5	6.1	4.2	76.4	4.5
2001	2.3	15.6	40.5	33.0	8.9	5.5	3.8	63.5	6.7
2002	2.6	15.6	41.2	32.6	8.1	4.9	3.4	58.5	7.5
2003	2.6	15.6	40.7	33.3	7.9	4.4	3.4	57.4	7.6
2004	2.7	15.7	40.4	33.2	7.9	4.6	3.6	57.5	7.8
2005	2.9	15.2	41.3	33.6	7.3	4.2	3.1	52.7	7.9
2006	3.2	15.4	41.1	34.3	7.1	3.5	2.3	52.6	8.4
2007	3.2	16.5	42.2	33.8	7.5	2.7	2.1	54.1	9.0
2008	3.0	17.7	42.6	33.8	6.9	3.3	2.2	51.1	10.7
2009	3.1	17.0	42.2	34.1	7.6	3.1	2.2	56.0	9.4
<b>Quarter 2</b>									
2000	4.9	14.6	39.5	30.9	8.1	5.6	3.8	56.3	6.5
2001	4.7	14.9	39.5	30.1	7.5	5.2	3.8	54.1	7.3
2002	4.9	15.6	38.8	30.6	7.8	6.0	4.2	55.7	7.7
2003	4.9	15.7	39.5	30.1	7.2	5.3	3.8	50.9	8.4
2004	4.7	15.4	38.8	31.4	6.8	4.8	3.4	47.6	8.6
2005	5.2	14.8	38.8	31.4	7.1	4.6	3.4	50.8	7.7
2006	4.8	15.1	41.1	31.6	6.6	4.1	2.8	46.9	8.5
2007	5.1	15.8	40.9	31.7	6.4	3.5	2.0	45.9	9.4
2008	4.9	17.2	40.8	32.4	6.8	4.7	3.3	48.6	10.4
2009									
<b>Quarter 3</b>									
2000	8.0	14.7	40.6	31.9	7.2	6.4	3.9	50.6	7.5
2001	7.9	15.3	40.4	30.4	7.3	6.6	4.6	50.3	8.0
2002	7.7	15.9	41.0	31.1	7.1	4.4	3.2	49.5	8.8
2003	8.0	16.0	39.6	31.3	6.7	5.3	4.3	46.6	9.3
2004	8.1	15.4	39.8	32.7	6.4	4.6	2.8	45.6	9.0
2005	8.1	15.6	40.7	31.5	6.2	3.1	2.0	42.9	9.5
2006	7.9	16.0	41.6	32.7	6.3	3.4	2.7	44.0	9.7
2007	8.1	17.1	41.4	32.4	6.0	2.6	1.7	42.3	11.2
2008	7.9	17.2	42.1	33.1	6.0	3.5	2.6	42.4	11.1
2009									
<b>Quarter 4</b>									
2000	5.0	13.2	42.1	31.0	7.2	5.6	4.2	50.1	6.0
2001	5.2	14.7	42.2	31.1	7.5	6.0	4.0	50.5	7.2
2002	5.8	15.0	41.2	30.0	7.1	5.0	3.3	49.3	7.9
2003	4.9	14.9	40.9	30.9	7.3	5.1	3.5	50.4	7.6
2004	5.0	14.8	40.3	32.0	6.8	5.5	4.1	46.7	7.9
2005	4.6	13.8	41.4	31.4	6.2	4.1	3.2	42.1	7.6
2006	4.8	14.5	42.3	33.9	6.2	3.8	2.7	42.3	8.3
2007	4.5	16.1	43.2	33.3	6.3	3.7	2.6	43.6	9.8
2008	4.4	16.2	42.8	33.0	5.8	3.9	2.6	40.5	10.4
2009									
<b>Total</b>									
2000	5.1	14.3	40.8	31.8	8.2	5.9	4.0	58.2	6.1
2001	5.0	15.0	40.7	31.2	7.7	5.8	4.1	54.4	7.3
2002	5.2	15.5	40.5	31.1	7.5	5.1	3.5	53.0	8.0
2003	5.1	15.5	40.2	31.4	7.2	5.1	3.8	51.1	8.2
2004	5.1	15.2	39.8	32.3	7.0	4.9	3.5	49.1	8.3
2005	5.2	14.8	40.5	32.0	6.6	4.0	2.9	46.8	8.1
2006	5.2	15.2	41.5	33.2	6.5	3.7	2.6	46.2	8.7
2007	5.2	16.3	41.9	32.8	6.5	3.1	2.1	46.4	9.8
2008	5.0	17.0	42.1	33.1	6.4	3.9	2.7	45.4	10.6
2009									

<sup>1</sup> First births divided by the total number of live births (excluding those with unstated parity), multiplied by 100.<sup>2</sup> Infant mortality is the number of infant deaths per 1,000 live births.<sup>3</sup> Neonatal mortality is the number of neonatal (infants aged under 4 weeks) deaths per 1,000 live births.

**Table 3 Births registered, classified by area of residence of mother**

	Total	Male	Female	Rate <sup>1</sup>
<b>STATE</b>	<b>18,787</b>	<b>9,590</b>	<b>9,197</b>	<b>17.0</b>
<b>LEINSTER</b>	<b>10,600</b>	<b>5,418</b>	<b>5,182</b>	<b>17.7</b>
Carlow	243	122	121	18.5
Dublin City	1,903	967	936	14.4
South Dublin	1,113	571	542	17.3
Fingal	1,373	720	653	21.9
Dun Laoghaire Rathdown	730	381	349	14.4
Kildare	1,045	544	501	21.5
Kilkenny	356	190	166	15.6
Laois	333	169	164	19.0
Longford	181	88	93	20.2
Louth	506	252	254	17.4
Meath	892	445	447	21.0
Offaly	313	153	160	16.9
Westmeath	336	186	150	16.2
Wexford	629	307	322	18.3
Wicklow	647	323	324	19.7
<b>MUNSTER</b>	<b>5,058</b>	<b>2,544</b>	<b>2,514</b>	<b>16.5</b>
Clare	465	229	236	16.1
Cork City	408	206	202	13.1
Cork County	1,705	842	863	18.1
Kerry	533	278	255	14.6
Limerick City	220	130	90	14.1
Limerick County	571	303	268	17.6
North Tipperary	339	165	174	19.7
South Tipperary	316	159	157	14.6
Waterford City	234	113	121	19.6
Waterford County	267	119	148	16.5
<b>CONNACHT</b>	<b>2,046</b>	<b>1,074</b>	<b>972</b>	<b>15.6</b>
Galway City	246	128	118	13.0
Galway County	770	396	374	18.5
Leitrim	121	65	56	16.0
Mayo	488	247	241	15.1
Roscommon	210	125	85	13.7
Sligo	211	113	98	13.3
<b>ULSTER (PART OF)</b>	<b>1,083</b>	<b>554</b>	<b>529</b>	<b>15.5</b>
Cavan	326	177	149	19.5
Donegal	558	277	281	14.5
Monaghan	199	100	99	13.6
<b>REGIONAL AUTHORITIES:</b>				
Border	1,921	984	937	15.6
Midland	1,163	596	567	17.4
West	1,714	896	818	16.1
Dublin	5,119	2,639	2,480	16.8
Mid-East	2,584	1,312	1,272	20.1
Mid-West	1,595	827	768	17.2
South-East	2,045	1,010	1,035	16.8
South-West	2,646	1,326	1,320	16.4

<sup>1</sup> Births per year per 1,000 population. Annual rates based on estimated 2008 population.

**Table 4 Births registered, classified by age of mother and previous number of liveborn children**

Age of mother at maternity	Previous number of liveborn children							
	Total	0	1	2	3	4	5 or more	Not stated
<b>All ages</b>	<b>18,787</b>	<b>7,897</b>	<b>5,958</b>	<b>3,086</b>	<b>1,195</b>	<b>334</b>	<b>230</b>	<b>87</b>
<b>15 and under</b>	<b>17</b>	<b>17</b>	<b>-</b>	<b>-</b>	<b>-</b>	<b>-</b>	<b>-</b>	<b>-</b>
16	43	42	1	-	-	-	-	-
17	75	69	6	-	-	-	-	-
18	178	161	16	-	-	-	-	1
19	278	238	35	3	-	-	-	2
<b>Under 20</b>	<b>591</b>	<b>527</b>	<b>58</b>	<b>3</b>	<b>-</b>	<b>-</b>	<b>-</b>	<b>3</b>
20	330	262	58	7	1	-	-	2
21	400	299	78	19	2	1	-	1
22	468	328	101	32	7	-	-	-
23	527	326	146	42	9	1	-	3
24	600	331	191	58	17	2	1	-
<b>20-24</b>	<b>2,325</b>	<b>1,546</b>	<b>574</b>	<b>158</b>	<b>36</b>	<b>4</b>	<b>1</b>	<b>6</b>
25	667	349	221	71	17	3	2	4
26	797	425	243	87	33	6	-	3
27	885	446	291	99	38	6	4	1
28	1,016	481	351	120	40	8	12	4
29	1,111	537	362	128	56	16	8	4
<b>25-29</b>	<b>4,476</b>	<b>2,238</b>	<b>1,468</b>	<b>505</b>	<b>184</b>	<b>39</b>	<b>26</b>	<b>16</b>
30	1,168	552	375	156	50	18	12	5
31	1,235	541	416	183	60	18	11	6
32	1,283	514	446	204	75	19	19	6
33	1,309	443	490	245	86	22	16	7
34	1,217	398	452	244	95	13	12	3
<b>30-34</b>	<b>6,212</b>	<b>2,448</b>	<b>2,179</b>	<b>1,032</b>	<b>366</b>	<b>90</b>	<b>70</b>	<b>27</b>
35	1,169	325	391	306	93	28	17	9
36	1,015	224	371	260	106	27	16	11
37	888	196	262	262	117	27	19	5
38	688	128	216	210	87	25	22	-
39	550	113	167	146	73	30	16	5
<b>35-39</b>	<b>4,310</b>	<b>986</b>	<b>1,407</b>	<b>1,184</b>	<b>476</b>	<b>137</b>	<b>90</b>	<b>30</b>
40	349	58	110	80	62	25	12	2
41	226	36	63	64	31	18	12	2
42	134	29	35	31	21	12	5	1
43	78	12	30	13	12	6	5	-
44	32	5	14	5	3	1	4	-
<b>40-44</b>	<b>819</b>	<b>140</b>	<b>252</b>	<b>193</b>	<b>129</b>	<b>62</b>	<b>38</b>	<b>5</b>
<b>45 and over</b>	<b>48</b>	<b>8</b>	<b>19</b>	<b>10</b>	<b>4</b>	<b>2</b>	<b>5</b>	<b>-</b>
Age not stated	6	4	1	1	-	-	-	-

**Table 5 Number and percentage of births registered within and outside marriage, classified by age of mother**

Age of mother at maternity	Total	Married parents	Unmarried Parents		% to married parents	% to unmarried parents	
			Total	Same address		Total	Same address
	Number				Percentage		
<b>All ages</b>	<b>18,787</b>	<b>12,382</b>	<b>6,405</b>	<b>3,354</b>	<b>66</b>	<b>34</b>	<b>18</b>
<b>15 and under</b>	<b>17</b>	<b>-</b>	<b>17</b>	<b>2</b>	<b>-</b>	<b>100</b>	<b>12</b>
16	43	-	43	4	-	100	9
17	75	6	69	12	8	92	16
18	178	13	165	33	7	93	19
19	278	29	249	62	10	90	22
<b>Under 20</b>	<b>591</b>	<b>48</b>	<b>543</b>	<b>113</b>	<b>8</b>	<b>92</b>	<b>19</b>
20	330	35	295	91	11	89	28
21	400	61	339	118	15	85	30
22	468	80	388	166	17	83	35
23	527	132	395	158	25	75	30
24	600	180	420	221	30	70	37
<b>20-24</b>	<b>2,325</b>	<b>488</b>	<b>1,837</b>	<b>754</b>	<b>21</b>	<b>79</b>	<b>32</b>
25	667	292	375	205	44	56	31
26	797	373	424	232	47	53	29
27	885	479	406	251	54	46	28
28	1,016	634	382	217	62	38	21
29	1,111	756	355	229	68	32	21
<b>25-29</b>	<b>4,476</b>	<b>2,534</b>	<b>1,942</b>	<b>1,134</b>	<b>57</b>	<b>43</b>	<b>25</b>
30	1,168	841	327	214	72	28	18
31	1,235	967	268	172	78	22	14
32	1,283	1,036	247	156	81	19	12
33	1,309	1,096	213	130	84	16	10
34	1,217	1,017	200	140	84	16	12
<b>30-34</b>	<b>6,212</b>	<b>4,957</b>	<b>1,255</b>	<b>812</b>	<b>80</b>	<b>20</b>	<b>13</b>
35	1,169	988	181	120	85	15	10
36	1,015	854	161	102	84	16	10
37	888	768	120	80	86	14	9
38	688	587	101	71	85	15	10
39	550	453	97	66	82	18	12
<b>35-39</b>	<b>4,310</b>	<b>3,650</b>	<b>660</b>	<b>439</b>	<b>85</b>	<b>15</b>	<b>10</b>
40	349	283	66	45	81	19	13
41	226	184	42	22	81	19	10
42	134	101	33	22	75	25	16
43	78	65	13	7	83	17	9
44	32	26	6	1	81	19	3
<b>40-44</b>	<b>819</b>	<b>659</b>	<b>160</b>	<b>97</b>	<b>80</b>	<b>20</b>	<b>12</b>
<b>45 and over</b>	<b>48</b>	<b>41</b>	<b>7</b>	<b>5</b>	<b>85</b>	<b>15</b>	<b>10</b>
Age not stated	6	5	1	-	83	17	-

**Table 6 Number and percentage of births registered within and outside marriage, classified by area of residence of mother**

Area of residence	Total	Married parents	Unmarried Parents		% to married parents	% to unmarried parents	
			Total	Same address		Total	Same address
	Number				Percentage		
<b>STATE</b>	<b>18,787</b>	<b>12,382</b>	<b>6,405</b>	<b>3,354</b>	<b>66</b>	<b>34</b>	<b>18</b>
<b>LEINSTER</b>	<b>10,600</b>	<b>6,723</b>	<b>3,877</b>	<b>1,950</b>	<b>63</b>	<b>37</b>	<b>18</b>
Carlow	243	141	102	62	58	42	26
Dublin City	1,903	1,019	884	350	54	46	18
South Dublin	1,113	613	500	214	55	45	19
Fingal	1,373	959	414	205	70	30	15
Dun Laoghaire Rathdown	730	537	193	89	74	26	12
Kildare	1,045	721	324	195	69	31	19
Kilkenny	356	235	121	75	66	34	21
Laois	333	198	135	79	59	41	24
Longford	181	118	63	40	65	35	22
Louth	506	307	199	101	61	39	20
Meath	892	655	237	158	73	27	18
Offaly	313	207	106	66	66	34	21
Westmeath	336	210	126	77	62	38	23
Wexford	629	365	264	122	58	42	19
Wicklow	647	438	209	117	68	32	18
<b>MUNSTER</b>	<b>5,058</b>	<b>3,458</b>	<b>1,600</b>	<b>882</b>	<b>68</b>	<b>32</b>	<b>17</b>
Clare	465	328	137	86	71	29	18
Cork City	408	230	178	84	56	44	21
Cork County	1,705	1,274	431	255	75	25	15
Kerry	533	374	159	82	70	30	15
Limerick City	220	103	117	45	47	53	20
Limerick County	571	419	152	97	73	27	17
North Tipperary	339	226	113	68	67	33	20
South Tipperary	316	205	111	60	65	35	19
Waterford City	234	134	100	52	57	43	22
Waterford County	267	165	102	53	62	38	20
<b>CONNACHT</b>	<b>2,046</b>	<b>1,482</b>	<b>564</b>	<b>353</b>	<b>72</b>	<b>28</b>	<b>17</b>
Galway City	246	171	75	41	70	30	17
Galway County	770	594	176	115	77	23	15
Leitrim	121	92	29	18	76	24	15
Mayo	488	327	161	96	67	33	20
Roscommon	210	155	55	45	74	26	21
Sligo	211	143	68	38	68	32	18
<b>ULSTER (PART OF)</b>	<b>1,083</b>	<b>719</b>	<b>364</b>	<b>169</b>	<b>66</b>	<b>34</b>	<b>16</b>
Cavan	326	221	105	70	68	32	21
Donegal	558	348	210	72	62	38	13
Monaghan	199	150	49	27	75	25	14
<b>REGIONAL AUTHORITIES:</b>							
Border	1,921	1,261	660	326	66	34	17
Midland	1,163	733	430	262	63	37	23
West	1,714	1,247	467	297	73	27	17
Dublin	5,119	3,128	1,991	858	61	39	17
Mid-East	2,584	1,814	770	470	70	30	18
Mid-West	1,595	1,076	519	296	67	33	19
South-East	2,045	1,245	800	424	61	39	21
South-West	2,646	1,878	768	421	71	29	16

**Table 7 Births registered, classified by area of residence and age of mother**

Area of residence	Total	Under 20	20-24	25-29	30-34	35-39	40 and over	Age not stated	Average age of mother at maternity	
									Total	First
<b>STATE</b>	<b>18,787</b>	<b>591</b>	<b>2,325</b>	<b>4,476</b>	<b>6,212</b>	<b>4,310</b>	<b>867</b>	<b>6</b>	<b>31.2</b>	<b>29.0</b>
<b>LEINSTER</b>	<b>10,600</b>	<b>345</b>	<b>1,383</b>	<b>2,621</b>	<b>3,381</b>	<b>2,421</b>	<b>447</b>	<b>2</b>	<b>31.1</b>	<b>28.9</b>
Carlow	243	8	44	68	64	51	8	-	30.3	27.6
Dublin City	1,903	80	308	491	544	399	81	-	30.5	28.5
South Dublin	1,113	52	185	313	315	203	44	1	30.0	27.7
Fingal	1,373	37	148	336	473	329	50	-	31.4	29.6
Dun Laoghaire Rathdown	730	15	56	106	274	223	56	-	33.0	31.2
Kildare	1,045	28	101	253	371	253	38	1	31.5	29.4
Kilkenny	356	7	38	99	114	82	16	-	31.3	29.0
Laois	333	17	41	105	90	69	11	-	30.3	27.7
Longford	181	12	31	45	51	32	10	-	30.1	26.9
Louth	506	16	71	142	154	104	19	-	30.8	28.3
Meath	892	15	87	189	325	238	38	-	31.9	29.2
Offaly	313	11	44	86	93	69	10	-	30.6	28.5
Westmeath	336	6	50	89	101	75	15	-	31.0	27.9
Wexford	629	31	105	166	188	116	23	-	30.1	27.7
Wicklow	647	10	74	133	224	178	28	-	31.9	30.4
<b>MUNSTER</b>	<b>5,058</b>	<b>154</b>	<b>588</b>	<b>1,146</b>	<b>1,759</b>	<b>1,149</b>	<b>259</b>	<b>3</b>	<b>31.4</b>	<b>29.0</b>
Clare	465	20	52	88	164	116	24	1	31.6	28.4
Cork City	408	16	72	114	112	84	10	-	30.1	28.0
Cork County	1,705	35	161	338	662	420	87	2	32.0	29.9
Kerry	533	9	58	118	191	130	27	-	31.8	29.3
Limerick City	220	19	39	65	56	33	8	-	29.1	27.0
Limerick County	571	10	56	129	199	147	30	-	31.9	30.0
North Tipperary	339	9	38	94	115	66	17	-	31.2	28.8
South Tipperary	316	16	45	89	89	58	19	-	30.5	28.0
Waterford City	234	12	38	57	78	35	14	-	30.2	27.5
Waterford County	267	8	29	54	93	60	23	-	31.9	28.7
<b>CONNACHT</b>	<b>2,046</b>	<b>43</b>	<b>210</b>	<b>434</b>	<b>722</b>	<b>526</b>	<b>110</b>	<b>1</b>	<b>31.9</b>	<b>29.8</b>
Galway City	246	7	29	55	75	60	19	1	31.7	29.9
Galway County	770	13	64	141	293	219	40	-	32.4	30.2
Leitrim	121	2	12	23	47	29	8	-	32.2	31.7
Mayo	488	12	54	114	172	111	25	-	31.5	29.3
Roscommon	210	2	25	54	70	53	6	-	31.3	29.5
Sligo	211	7	26	47	65	54	12	-	31.5	29.3
<b>ULSTER (PART OF)</b>	<b>1,083</b>	<b>49</b>	<b>144</b>	<b>275</b>	<b>350</b>	<b>214</b>	<b>51</b>	<b>-</b>	<b>30.8</b>	<b>27.5</b>
Cavan	326	16	46	85	96	64	19	-	30.7	27.2
Donegal	558	26	83	143	167	114	25	-	30.6	27.2
Monaghan	199	7	15	47	87	36	7	-	31.2	29.0
<b>REGIONAL AUTHORITIES:</b>										
Border	1,921	74	253	487	616	401	90	-	30.9	28.2
Midland	1,163	46	166	325	335	245	46	-	30.5	27.8
West	1,714	34	172	364	610	443	90	1	31.9	29.8
Dublin	5,119	184	697	1,246	1,606	1,154	231	1	31.0	29.0
Mid-East	2,584	53	262	575	920	669	104	1	31.7	29.6
Mid-West	1,595	58	185	376	534	362	79	1	31.3	28.8
South-East	2,045	82	299	533	626	402	103	-	30.6	28.1
South-West	2,646	60	291	570	965	634	124	2	31.7	29.5

**Table 8 Births registered outside marriage, classified by area of residence and age of mother**

Area of residence	Total	Under 25	25-29	30-34	35-39	40 and over	Age not stated	Average age of mother at maternity	
								Total	First
<b>STATE</b>	<b>6,405</b>	<b>2,380</b>	<b>1,942</b>	<b>1,255</b>	<b>660</b>	<b>167</b>	<b>1</b>	<b>27.6</b>	<b>25.9</b>
<b>LEINSTER</b>	<b>3,877</b>	<b>1,414</b>	<b>1,216</b>	<b>746</b>	<b>407</b>	<b>94</b>	<b>0</b>	<b>27.6</b>	<b>25.9</b>
Carlow	102	42	27	23	9	1	-	27.4	25.4
Dublin City	884	344	265	167	86	22	-	27.4	25.8
South Dublin	500	191	164	89	45	11	-	27.2	24.8
Fingal	414	137	141	78	47	11	-	27.8	26.5
Dun Laoghaire Rathdown	193	63	49	49	26	6	-	28.5	27.5
Kildare	324	102	99	72	44	7	-	28.3	26.6
Kilkenny	121	36	45	23	14	3	-	28.0	26.3
Laois	135	49	52	15	17	2	-	27.2	25.1
Longford	63	27	17	11	6	2	-	26.9	24.5
Louth	199	73	61	36	23	6	-	27.9	25.6
Meath	237	78	76	44	32	7	-	28.4	25.9
Offaly	106	41	35	23	7	-	-	26.7	25.4
Westmeath	126	41	47	25	10	3	-	27.8	25.4
Wexford	264	119	81	42	16	6	-	26.5	25.0
Wicklow	209	71	57	49	25	7	-	28.4	27.4
<b>MUNSTER</b>	<b>1,600</b>	<b>602</b>	<b>476</b>	<b>335</b>	<b>150</b>	<b>37</b>	<b>0</b>	<b>27.6</b>	<b>25.8</b>
Clare	137	64	37	21	12	3	-	26.4	24.3
Cork City	178	71	55	34	16	2	-	27.4	25.7
Cork County	431	154	119	102	43	13	-	28.0	26.5
Kerry	159	51	43	39	21	5	-	28.5	26.2
Limerick City	117	47	42	20	7	1	-	26.5	25.3
Limerick County	152	49	48	34	18	3	-	28.3	27.0
North Tipperary	113	40	38	23	10	2	-	27.8	25.8
South Tipperary	111	49	39	14	5	4	-	26.2	24.5
Waterford City	100	42	26	22	10	-	-	26.9	24.4
Waterford County	102	35	29	26	8	4	-	27.8	25.0
<b>CONNACHT</b>	<b>564</b>	<b>193</b>	<b>160</b>	<b>111</b>	<b>75</b>	<b>24</b>	<b>1</b>	<b>28.4</b>	<b>27.1</b>
Galway City	75	25	19	21	5	4	1	28.6	26.8
Galway County	176	57	51	32	29	7	-	28.9	27.5
Leitrim	29	9	5	6	7	2	-	29.9	29.0
Mayo	161	51	45	39	19	7	-	28.5	27.6
Roscommon	55	22	20	5	7	1	-	27.1	26.0
Sligo	68	29	20	8	8	3	-	27.5	25.5
<b>ULSTER (PART OF)</b>	<b>364</b>	<b>171</b>	<b>90</b>	<b>63</b>	<b>28</b>	<b>12</b>	<b>0</b>	<b>26.7</b>	<b>24.0</b>
Cavan	105	55	22	17	10	1	-	26.2	24.0
Donegal	210	96	57	35	13	9	-	26.8	23.8
Monaghan	49	20	11	11	5	2	-	27.6	25.0
<b>REGIONAL AUTHORITIES:</b>									
Border	660	282	176	113	66	23	-	27.3	24.8
Midland	430	158	151	74	40	7	-	27.2	25.2
West	467	155	135	97	60	19	1	28.5	27.3
Dublin	1,991	735	619	383	204	50	-	27.6	25.9
Mid-East	770	251	232	165	101	21	-	28.4	26.6
Mid-West	519	200	165	98	47	9	-	27.3	25.7
South-East	800	323	247	150	62	18	-	27.0	25.1
South-West	768	276	217	175	80	20	-	28.0	26.3

**Table 9 Deaths registered by county of residence of deceased**

Area of residence	Total	Male	Female	Rate <sup>1</sup>
<b>STATE</b>	<b>8,419</b>	<b>4,326</b>	<b>4,093</b>	<b>7.6</b>
<b>LEINSTER</b>	<b>4,199</b>	<b>2,116</b>	<b>2,083</b>	<b>7.0</b>
Carlow	112	55	57	8.5
Dublin City	1,327	638	689	10.1
South Dublin	278	143	135	4.3
Fingal	237	113	124	3.8
Dun Laoghaire Rathdown	385	186	199	7.6
Kildare	238	136	102	4.9
Kilkenny	181	90	91	7.9
Laois	116	64	52	6.6
Longford	80	37	43	8.9
Louth	237	125	112	8.2
Meath	225	118	107	5.3
Offaly	149	77	72	8.1
Westmeath	129	71	58	6.2
Wexford	278	146	132	8.1
Wicklow	227	117	110	6.9
<b>MUNSTER</b>	<b>2,492</b>	<b>1,315</b>	<b>1,177</b>	<b>8.1</b>
Clare	232	114	118	8.0
Cork City	331	160	171	10.6
Cork County	645	348	297	6.8
Kerry	331	192	139	9.1
Limerick City	119	60	59	7.6
Limerick County	266	144	122	8.2
North Tipperary	182	102	80	10.6
South Tipperary	180	97	83	8.3
Waterford City	90	44	46	7.5
Waterford County	116	54	62	7.2
<b>CONNACHT</b>	<b>1,121</b>	<b>588</b>	<b>533</b>	<b>8.5</b>
Galway City	40	21	19	2.1
Galway County	389	209	180	9.4
Leitrim	74	35	39	9.8
Mayo	335	166	169	10.4
Roscommon	150	88	62	9.8
Sligo	133	69	64	8.4
<b>ULSTER (PART OF)</b>	<b>607</b>	<b>307</b>	<b>300</b>	<b>8.7</b>
Cavan	158	80	78	9.5
Donegal	320	170	150	8.3
Monaghan	129	57	72	8.8
<b>REGIONAL AUTHORITIES:</b>				
Border	1,051	536	515	8.5
Midland	474	249	225	7.1
West	914	484	430	8.6
Dublin	2,227	1,080	1,147	7.3
Mid-East	690	371	319	5.4
Mid-West	799	420	379	8.6
South-East	957	486	471	7.8
South-West	1,307	700	607	8.1

<sup>1</sup> Deaths per year per 1,000 population. Annual rates based on estimated 2008 population.

**Table 10 Deaths registered by cause of death and county of residence of deceased**

Area of residence	Total deaths	Malignant Neoplasms	Diseases of the Circulatory system	Diseases of the Respiratory system	External causes	All other causes
<b>STATE</b>	<b>8,419</b>	<b>2,319</b>	<b>2,855</b>	<b>1,303</b>	<b>378</b>	<b>1,564</b>
<b>LEINSTER</b>	<b>4,199</b>	<b>1,182</b>	<b>1,346</b>	<b>678</b>	<b>205</b>	<b>788</b>
Carlow	112	43	33	20	1	15
Dublin City	1,327	398	373	218	71	267
South Dublin	278	70	82	51	19	56
Fingal	237	71	69	34	16	47
Dun Laoghaire Rathdown	385	120	121	62	17	65
Kildare	238	65	88	30	9	46
Kilkenny	181	49	63	33	5	31
Laois	116	26	39	24	3	24
Longford	80	23	34	7	2	14
Louth	237	54	88	49	10	36
Meath	225	54	72	30	17	52
Offaly	149	29	65	25	7	23
Westmeath	129	34	47	17	8	23
Wexford	278	79	104	32	15	48
Wicklow	227	67	68	46	5	41
<b>MUNSTER</b>	<b>2,492</b>	<b>680</b>	<b>893</b>	<b>384</b>	<b>97</b>	<b>438</b>
Clare	232	61	89	33	7	42
Cork City	331	93	106	49	13	70
Cork County	645	172	235	89	44	105
Kerry	331	78	131	59	5	58
Limerick City	119	35	39	23	1	21
Limerick County	266	73	101	43	5	44
North Tipperary	182	44	71	29	10	28
South Tipperary	180	50	56	23	10	41
Waterford City	90	32	30	16	0	12
Waterford County	116	42	35	20	2	17
<b>CONNACHT</b>	<b>1,121</b>	<b>296</b>	<b>424</b>	<b>144</b>	<b>45</b>	<b>212</b>
Galway City	40	13	16	5	1	5
Galway County	389	96	143	59	20	71
Leitrim	74	23	26	8	4	13
Mayo	335	84	134	39	15	63
Roscommon	150	41	57	19	1	32
Sligo	133	39	48	14	4	28
<b>ULSTER (PART OF)</b>	<b>607</b>	<b>161</b>	<b>192</b>	<b>97</b>	<b>31</b>	<b>126</b>
Cavan	158	32	47	26	13	40
Donegal	320	93	97	51	16	63
Monaghan	129	36	48	20	2	23
<b>REGIONAL AUTHORITIES:</b>						
Border	1,051	277	354	168	49	203
Midland	474	112	185	73	20	84
West	914	234	350	122	37	171
Dublin	2,227	659	645	365	123	435
Mid-East	690	186	228	106	31	139
Mid-West	799	213	300	128	23	135
South-East	957	295	321	144	33	164
South-West	1,307	343	472	197	62	233

**Table 11 Deaths registered classified by cause and age group**

Cause of Death	65 COD Code	ICD-10 Code	Total Deaths	Age Group										
				Under 1	1-4	5-14	15-24	25-34	35-44	45-54	55-64	65-74	75-84	85 and over
<b>Total deaths</b>	<b>0</b>	<b>A00-Y89</b>	<b>8,419</b>	<b>59</b>	<b>16</b>	<b>18</b>	<b>81</b>	<b>133</b>	<b>183</b>	<b>380</b>	<b>810</b>	<b>1,461</b>	<b>2,688</b>	<b>2,590</b>
<b>Infectious and parasitic diseases:-</b>														
Tuberculosis	1	A00-B99	76	0	1	1	1	9	3	4	8	13	20	16
A15-A19,B90	2		9	0	0	0	0	0	0	0	0	4	4	1
Meningococcal infection	3	A39	2	0	1	0	0	0	0	0	0	0	0	0
AIDS (HIV Disease)	4	B20-B24	7	0	0	0	0	3	1	2	1	0	0	0
Viral Hepatitis	5	B15-B19	5	0	0	0	1	2	1	1	0	0	0	0
Other infectious and parasitic diseases			53	0	0	0	0	4	1	1	7	9	16	15
<b>Neoplasms</b>	<b>6</b>	<b>C00-D48</b>	<b>2,366</b>	<b>0</b>	<b>2</b>	<b>4</b>	<b>4</b>	<b>19</b>	<b>56</b>	<b>168</b>	<b>393</b>	<b>631</b>	<b>737</b>	<b>352</b>
<b>Malignant Neoplasms of the:-</b>	<b>7</b>	<b>C00-C97</b>	<b>2,319</b>	<b>0</b>	<b>2</b>	<b>4</b>	<b>4</b>	<b>18</b>	<b>55</b>	<b>168</b>	<b>392</b>	<b>620</b>	<b>717</b>	<b>339</b>
Lip, oral cavity, pharynx	8	C00-C14	37	0	0	0	0	0	0	5	10	11	7	4
Oesophagus	9	C15	80	0	0	0	0	0	2	4	14	28	16	16
Stomach	10	C16	97	0	0	0	0	0	0	5	15	23	36	18
Colon	11	C18	145	0	0	0	0	1	3	13	12	39	49	28
Rectum and anus	12	C19-C21	117	0	0	0	0	2	3	5	18	38	36	15
Liver and the intrahepatic bile ducts	13	C22	64	0	0	0	0	0	1	4	9	21	24	5
Pancreas	14	C25	133	0	0	0	0	0	5	10	25	42	34	17
Larynx and trachea/bronchus /lung	15	C32-C34	522	0	0	0	0	1	5	27	112	154	176	47
Skin	16	C43	32	0	0	0	1	1	1	6	5	9	2	7
Breast	17	C50	196	0	0	0	0	1	10	21	31	50	45	38
Cervix uteri	18	C53	26	0	0	0	0	0	7	7	2	3	6	1
Other parts of uterus	19	C54-C55	28	0	0	0	0	0	0	4	7	4	9	4
Ovary	20	C56	66	0	0	0	0	0	3	5	20	16	18	4
Prostate	21	C61	146	0	0	0	0	0	0	3	7	33	58	45
Kidney	22	C64	55	0	0	0	0	0	0	8	11	15	15	6
Bladder	23	C67	48	0	0	0	0	0	0	1	5	13	23	6
Lymph/haematopoietic tissue	24	C81-C96	203	0	0	3	2	5	6	11	35	50	62	29
Other malignant neoplasms			324	0	2	1	1	7	9	29	54	71	101	49
<b>Diseases of the blood and blood-forming organs, immunological disorders</b>														
<b>Endocrine, Nutritional and metabolic diseases</b>	<b>25</b>	<b>D50-D89</b>	<b>28</b>	<b>1</b>	<b>1</b>	<b>0</b>	<b>1</b>	<b>0</b>	<b>0</b>	<b>0</b>	<b>3</b>	<b>4</b>	<b>8</b>	<b>10</b>
Diabetes mellitus	26	E00-E90	203	2	1	2	3	3	4	10	15	37	78	48
E10-E14	27		142	0	0	0	1	1	4	7	12	27	63	27
<b>Diseases of the nervous system and the sense organs</b>	<b>28</b>	<b>F00-F99</b>	<b>187</b>	<b>0</b>	<b>0</b>	<b>1</b>	<b>0</b>	<b>0</b>	<b>0</b>	<b>1</b>	<b>2</b>	<b>14</b>	<b>62</b>	<b>107</b>
Meningitis	31	G00-H95	335	6	3	1	9	8	12	14	30	54	93	105
Ischaemic heart disease	32	G00-G03	4	2	0	0	0	0	0	1	0	0	1	0
of which: (Acute myocardial infarction)	33	I00-I99	2,855	0	0	0	2	13	34	84	189	437	979	1,117
Other heart disease	34	I20-I25	1,497	0	0	0	0	2	18	45	122	264	498	548
Cerebrovascular disease	35	I21	773	0	0	0	0	1	7	21	57	136	280	271
Other diseases of circulatory system	36	I30-I33,I39-I52	357	0	0	0	2	2	3	15	22	37	103	173
Other diseases of circulatory system		I60-I69	629	0	0	0	0	5	9	11	26	81	234	263
			372	0	0	0	0	4	4	13	19	55	144	133

<b>Diseases of the Respiratory system</b>	<b>37</b>	<b>J00-J99</b>	<b>1,303</b>	<b>0</b>	<b>1</b>	<b>1</b>	<b>1</b>	<b>1</b>	<b>2</b>	<b>6</b>	<b>15</b>	<b>52</b>	<b>162</b>	<b>480</b>	<b>583</b>
Influenza	38	J10-J11	2	0	0	0	0	0	0	0	0	0	0	0	2
Pneumonia	39	J12-J19	495	0	0	0	0	1	1	2	6	12	36	139	299
Chronic Lower respiratory disease	40	J40-J47	537	0	0	1	1	1	1	1	3	31	88	248	163
of which: <i>Asthma</i>	41	J45-J46	23	0	0	1	1	1	1	1	1	0	2	6	10
Other diseases of the respiratory system			269	0	1	0	0	0	0	3	6	9	38	93	119
<b>Diseases of the Digestive system</b>	<b>42</b>	<b>K00-K93</b>	<b>321</b>	<b>1</b>	<b>0</b>	<b>0</b>	<b>1</b>	<b>5</b>	<b>5</b>	<b>15</b>	<b>33</b>	<b>50</b>	<b>58</b>	<b>89</b>	<b>69</b>
Ulcer of stomach, duodenum and jejunum	43	K25-K28	36	0	0	0	0	0	0	0	3	3	8	13	9
Chronic liver disease	44	K70,K73-K74	82	0	0	0	0	2	2	11	20	23	20	6	0
Other diseases of the digestive system			203	1	0	0	1	3	3	4	10	24	30	70	60
<b>Diseases of the skin and subcutaneous tissue</b>	<b>45</b>	<b>L00-L99</b>	<b>8</b>	<b>0</b>	<b>0</b>	<b>0</b>	<b>0</b>	<b>0</b>	<b>0</b>	<b>0</b>	<b>0</b>	<b>1</b>	<b>1</b>	<b>3</b>	<b>3</b>
<b>Diseases of the musculoskeletal system/connective tissue</b>	<b>46</b>	<b>M00-M99</b>	<b>69</b>	<b>0</b>	<b>0</b>	<b>0</b>	<b>0</b>	<b>0</b>	<b>0</b>	<b>1</b>	<b>3</b>	<b>5</b>	<b>9</b>	<b>24</b>	<b>27</b>
Rheumatoid arthritis and osteoarthritis	47	M05-M06,M15-M19	30	0	0	0	0	0	0	0	0	1	6	10	13
<b>Diseases of the genitourinary system</b>	<b>48</b>	<b>N00-N99</b>	<b>203</b>	<b>0</b>	<b>0</b>	<b>0</b>	<b>1</b>	<b>1</b>	<b>1</b>	<b>1</b>	<b>1</b>	<b>3</b>	<b>16</b>	<b>71</b>	<b>109</b>
Diseases of the kidney and ureter	49	N00-N29	138	0	0	0	1	1	1	1	1	3	14	50	67
<b>Complications of pregnancy, childbirth and puerperium</b>	<b>50</b>	<b>O00-O99</b>	<b>0</b>	<b>0</b>	<b>0</b>	<b>0</b>	<b>0</b>	<b>0</b>	<b>0</b>	<b>0</b>	<b>0</b>	<b>0</b>	<b>0</b>	<b>0</b>	<b>0</b>
<b>Certain conditions originating in the perinatal period<sup>1</sup></b>	<b>51</b>	<b>P00-P96</b>	<b>17</b>	<b>17</b>	<b>0</b>	<b>0</b>	<b>0</b>	<b>0</b>	<b>0</b>	<b>0</b>	<b>0</b>	<b>0</b>	<b>0</b>	<b>0</b>	<b>0</b>
<b>Congenital malformations and chromosomal abnormalities</b>	<b>52</b>	<b>Q00-Q99</b>	<b>47</b>	<b>27</b>	<b>4</b>	<b>3</b>	<b>2</b>	<b>1</b>	<b>1</b>	<b>2</b>	<b>4</b>	<b>4</b>	<b>0</b>	<b>0</b>	<b>0</b>
Congenital malformations of the:-															
Nervous system	53	Q00-Q07	12	7	3	2	0	0	0	0	0	0	0	0	0
Circulatory system	54	Q20-Q28	10	5	0	0	2	0	0	1	1	1	0	0	0
<b>Symptoms, signs, abnormal findings, ill-defined causes</b>	<b>55</b>	<b>R00-R99</b>	<b>23</b>	<b>5</b>	<b>0</b>	<b>0</b>	<b>2</b>	<b>1</b>	<b>1</b>	<b>1</b>	<b>2</b>	<b>2</b>	<b>2</b>	<b>4</b>	<b>4</b>
Sudden infant death syndrome	56	R95	4	4	0	0	0	0	0	0	0	0	0	0	0
Unknown and unspecified causes	57	R96-R99	14	1	0	0	1	1	1	1	2	2	1	4	1
<b>External causes of injury and poisoning</b>	<b>58</b>	<b>V01-Y89</b>	<b>378</b>	<b>0</b>	<b>3</b>	<b>5</b>	<b>54</b>	<b>71</b>	<b>71</b>	<b>48</b>	<b>41</b>	<b>53</b>	<b>23</b>	<b>40</b>	<b>40</b>
Accidents	59	V01-X59	217	0	3	3	26	26	26	24	20	26	14	37	38
of which: <i>Transport accidents</i>	60	V01-V99	59	0	3	1	15	7	7	11	7	3	4	4	4
<i>Accidental falls</i>	61	W00-W19	70	0	0	0	1	2	2	5	5	6	3	23	25
<i>Accidental poisoning</i>	62	X40-X49	50	0	0	0	8	15	15	7	6	9	3	2	0
other accidents			38	0	0	0	2	2	2	1	2	8	4	8	9
Suicide and intentional self harm	63	X60-X84	106	0	0	0	22	28	28	15	13	19	6	1	0
Homicide/assault	64	X85-Y09	10	0	0	0	1	5	5	1	2	1	0	0	0
Events of undetermined intent	65	Y10-Y34	41	0	0	0	5	10	10	8	6	7	3	2	0
All other external causes			4	0	0	0	0	2	2	0	0	0	0	0	2

<sup>1</sup> Stillbirths not included.

Table 12 Male deaths registered classified by cause and age group

Cause of Death	65 COD Code	ICD-10 Code	Total Males	Age Group										
				Under 1	1-4	5-14	15-24	25-34	35-44	45-54	55-64	65-74	75-84	85 and over
<b>Total Male Deaths</b>	<b>0</b>	<b>A00-Y89</b>	<b>4,326</b>	<b>35</b>	<b>11</b>	<b>10</b>	<b>63</b>	<b>97</b>	<b>110</b>	<b>207</b>	<b>506</b>	<b>935</b>	<b>1,403</b>	<b>949</b>
<b>Infectious and parasitic diseases:-</b>	<b>1</b>	<b>A00-B99</b>	<b>36</b>	<b>0</b>	<b>0</b>	<b>1</b>	<b>1</b>	<b>4</b>	<b>2</b>	<b>3</b>	<b>5</b>	<b>5</b>	<b>6</b>	<b>9</b>
Tuberculosis	2	A15-A19,B90	4	0	0	0	0	0	0	0	0	1	2	1
Meningococcal infection	3	A39	1	0	1	0	0	0	0	0	0	0	0	0
AIDS (HIV Disease)	4	B20-B24	5	0	0	0	0	2	0	2	1	0	0	0
Viral Hepatitis	5	B15-B19	4	0	0	0	1	1	1	1	0	0	0	0
Other infectious and parasitic diseases			22	0	0	0	0	1	1	0	4	4	4	8
<b>Neoplasms</b>	<b>6</b>	<b>C00-D48</b>	<b>1,295</b>	<b>0</b>	<b>2</b>	<b>3</b>	<b>3</b>	<b>11</b>	<b>22</b>	<b>73</b>	<b>218</b>	<b>390</b>	<b>403</b>	<b>170</b>
<b>Malignant Neoplasms of the:-</b>	<b>7</b>	<b>C00-C97</b>	<b>1,277</b>	<b>0</b>	<b>2</b>	<b>3</b>	<b>3</b>	<b>11</b>	<b>22</b>	<b>73</b>	<b>218</b>	<b>382</b>	<b>396</b>	<b>167</b>
Lip, oral cavity, pharynx	8	C00-C14	28	0	0	0	0	0	0	3	9	9	4	3
Oesophagus	9	C15	53	0	0	0	0	0	2	3	13	20	8	7
Stomach	10	C16	62	0	0	0	0	0	0	3	10	15	26	8
Colon	11	C18	89	0	0	0	0	0	1	6	8	31	29	14
Rectum and anus	12	C19-C21	68	0	0	0	0	2	1	4	9	28	19	5
Liver and the intrahepatic bile ducts	13	C22	45	0	0	0	0	0	0	2	8	16	15	4
Pancreas	14	C25	68	0	0	0	0	0	4	7	14	24	13	6
Larynx and trachea/bronchus /lung	15	C32-C34	322	0	0	0	0	0	3	10	70	106	101	32
Skin	16	C43	22	0	0	0	1	1	1	5	5	4	2	3
Breast	17	C50	1	0	0	0	0	0	0	0	0	0	1	0
Cervix uteri	18	C53	0	0	0	0	0	0	0	0	0	0	0	0
Other parts of uterus	19	C54-C55	0	0	0	0	0	0	0	0	0	0	0	0
Ovary	20	C56	0	0	0	0	0	0	0	0	0	0	0	0
Prostate	21	C61	146	0	0	0	0	0	0	3	7	33	58	45
Kidney	22	C64	36	0	0	0	0	0	0	3	8	9	14	2
Bladder	23	C67	34	0	0	0	0	0	0	0	4	7	18	5
Lymph/haematopoietic tissue	24	C81-C96	122	0	0	2	2	3	5	7	24	36	34	9
Other malignant neoplasms			181	0	2	1	0	5	5	17	29	44	54	24
<b>Diseases of the blood and blood-forming organs, immunological disorders</b>	<b>25</b>	<b>D50-D89</b>	<b>14</b>	<b>0</b>	<b>1</b>	<b>0</b>	<b>1</b>	<b>0</b>	<b>0</b>	<b>0</b>	<b>2</b>	<b>2</b>	<b>2</b>	<b>6</b>
<b>Endocrine, Nutritional and metabolic diseases</b>	<b>26</b>	<b>E00-E90</b>	<b>105</b>	<b>2</b>	<b>0</b>	<b>0</b>	<b>1</b>	<b>1</b>	<b>3</b>	<b>7</b>	<b>8</b>	<b>28</b>	<b>36</b>	<b>19</b>
Diabetes mellitus	27	E10-E14	71	0	0	0	0	0	3	5	6	21	28	8
<b>Mental and behavioural disorders</b>	<b>28</b>	<b>F00-F99</b>	<b>70</b>	<b>0</b>	<b>0</b>	<b>0</b>	<b>0</b>	<b>0</b>	<b>0</b>	<b>1</b>	<b>0</b>	<b>10</b>	<b>35</b>	<b>24</b>
<b>Diseases of the nervous system and the sense organs</b>	<b>31</b>	<b>G00-H95</b>	<b>152</b>	<b>3</b>	<b>2</b>	<b>0</b>	<b>7</b>	<b>5</b>	<b>8</b>	<b>8</b>	<b>17</b>	<b>30</b>	<b>45</b>	<b>27</b>
Meningitis	32	G00-G03	4	2	0	0	0	0	0	1	0	0	1	0
<b>Diseases of the Circulatory System:-</b>	<b>33</b>	<b>I00-I99</b>	<b>1,439</b>	<b>0</b>	<b>0</b>	<b>0</b>	<b>1</b>	<b>6</b>	<b>23</b>	<b>61</b>	<b>142</b>	<b>309</b>	<b>520</b>	<b>377</b>
Ischaemic heart disease	34	I20-I25	861	0	0	0	0	1	13	40	103	205	289	210
of which: (Acute myocardial infarction)		I21	442	0	0	0	0	0	6	18	49	102	160	107
Other heart disease	35	I30-I33,I39-I52	151	0	0	0	1	0	2	10	12	20	49	57
Cerebrovascular disease	36	I60-I69	279	0	0	0	0	3	5	4	10	54	128	75
Other diseases of circulatory system			148	0	0	0	0	2	3	7	17	30	54	35

<b>Diseases of the Respiratory system</b>	<b>37</b>	<b>J00-J99</b>	<b>602</b>	<b>0</b>	<b>1</b>	<b>1</b>	<b>1</b>	<b>1</b>	<b>1</b>	<b>3</b>	<b>6</b>	<b>30</b>	<b>96</b>	<b>243</b>	<b>220</b>
Influenza	38	J10-J11	0	0	0	0	0	0	0	0	0	0	0	0	0
Pneumonia	39	J12-J19	191	0	0	0	0	0	0	2	3	4	21	67	94
Chronic Lower respiratory disease	40	J40-J47	279	0	0	1	1	1	1	0	1	18	53	124	80
of which: Asthma	41	J45-J46	11	0	0	1	1	1	1	0	1	0	0	3	4
Other diseases of the respiratory system			132	0	1	0	0	0	0	1	2	8	22	52	46
<b>Diseases of the Digestive system</b>	<b>42</b>	<b>K00-K93</b>	<b>173</b>	<b>1</b>	<b>0</b>	<b>1</b>	<b>4</b>	<b>7</b>	<b>16</b>	<b>35</b>	<b>38</b>	<b>47</b>	<b>24</b>	<b>24</b>	<b>24</b>
Ulcer of stomach, duodenum and jejunum	43	K25-K28	14	0	0	0	0	0	1	3	2	3	2	6	2
Chronic liver disease	44	K70,K73-K74	49	0	0	0	2	6	9	14	9	14	14	4	0
Other diseases of the digestive system			110	1	0	0	1	2	6	18	6	18	22	37	22
<b>Diseases of the skin and subcutaneous tissue</b>	<b>45</b>	<b>L00-L99</b>	<b>2</b>	<b>0</b>	<b>0</b>	<b>0</b>	<b>0</b>	<b>0</b>	<b>0</b>	<b>0</b>	<b>0</b>	<b>0</b>	<b>1</b>	<b>0</b>	<b>1</b>
<b>Diseases of the musculoskeletal system/connective tissue</b>	<b>46</b>	<b>M00-M99</b>	<b>22</b>	<b>0</b>	<b>0</b>	<b>0</b>	<b>0</b>	<b>0</b>	<b>1</b>	<b>3</b>	<b>2</b>	<b>9</b>	<b>7</b>	<b>9</b>	<b>7</b>
Rheumatoid arthritis and osteoarthritis	47	M05-M06,M15-M19	9	0	0	0	0	0	0	0	0	1	2	4	2
<b>Diseases of the genitourinary system</b>	<b>48</b>	<b>N00-N99</b>	<b>90</b>	<b>0</b>	<b>0</b>	<b>0</b>	<b>1</b>	<b>0</b>	<b>0</b>	<b>2</b>	<b>8</b>	<b>32</b>	<b>46</b>	<b>32</b>	<b>46</b>
Diseases of the kidney and ureter	49	N00-N29	66	0	0	0	1	0	0	0	0	2	7	25	30
<b>Complications of pregnancy, childbirth and puerperium</b>	<b>50</b>	<b>O00-O99</b>	<b>0</b>	<b>0</b>	<b>0</b>	<b>0</b>	<b>0</b>	<b>0</b>	<b>0</b>	<b>0</b>	<b>0</b>	<b>0</b>	<b>0</b>	<b>0</b>	<b>0</b>
<b>Certain conditions originating in the perinatal period<sup>1</sup></b>	<b>51</b>	<b>P00-P96</b>	<b>10</b>	<b>10</b>	<b>0</b>	<b>0</b>	<b>0</b>	<b>0</b>	<b>0</b>	<b>0</b>	<b>0</b>	<b>0</b>	<b>0</b>	<b>0</b>	<b>0</b>
<b>Congenital malformations and chromosomal abnormalities</b>	<b>52</b>	<b>Q00-Q99</b>	<b>26</b>	<b>15</b>	<b>2</b>	<b>1</b>	<b>1</b>	<b>1</b>	<b>1</b>	<b>2</b>	<b>1</b>	<b>3</b>	<b>0</b>	<b>0</b>	<b>0</b>
Congenital malformations of the:-															
Nervous system	53	Q00-Q07	3	1	1	1	0	0	0	0	0	0	0	0	0
Circulatory system	54	Q20-Q28	5	2	0	0	1	0	0	1	0	1	0	0	0
<b>Symptoms, signs, abnormal findings, ill-defined causes</b>	<b>55</b>	<b>R00-R99</b>	<b>13</b>	<b>4</b>	<b>0</b>	<b>0</b>	<b>0</b>	<b>1</b>	<b>1</b>	<b>1</b>	<b>1</b>	<b>1</b>	<b>1</b>	<b>3</b>	<b>1</b>
Sudden infant death syndrome	56	R95	3	3	0	0	0	0	0	0	0	0	0	0	0
Unknown and unspecified causes	57	R96-R99	10	1	0	0	0	1	1	1	1	1	1	3	1
<b>External causes of injury and poisoning</b>	<b>58</b>	<b>V01-Y89</b>	<b>277</b>	<b>0</b>	<b>3</b>	<b>4</b>	<b>45</b>	<b>62</b>	<b>39</b>	<b>29</b>	<b>15</b>	<b>40</b>	<b>15</b>	<b>22</b>	<b>18</b>
Accidents	59	V01-X59	147	0	3	2	22	23	18	15	9	18	9	20	17
of which: Transport accidents	60	V01-V99	45	0	3	1	11	6	9	4	4	1	4	2	4
Accidental falls	61	W00-W19	37	0	0	0	1	2	5	5	4	4	1	11	8
Accidental poisoning	62	X40-X49	38	0	0	0	8	14	3	4	6	6	1	2	0
other accidents			27	0	0	0	2	7	2	2	3	3	5	5	5
Suicide and intentional self harm	63	X60-X84	85	0	0	2	18	23	12	9	15	5	1	1	0
Homicide/assault	64	X85-Y09	8	0	0	0	1	4	1	1	1	0	0	0	0
Events of undetermined intent	65	Y10-Y34	34	0	0	0	4	10	8	4	6	6	1	1	0
All other external causes			3	0	0	0	0	2	0	0	0	0	0	0	1

<sup>1</sup> Stillbirths not included.

Table 13 Female deaths registered classified by cause and age group

Cause of Death	65 COD Code	ICD-10 Code	Total Females	Age Group										
				Under 1	1-4	5-14	15-24	25-34	35-44	45-54	55-64	65-74	75-84	85 and over
<b>Total Female Deaths</b>	<b>0</b>	<b>A00-Y89</b>	<b>4,093</b>	<b>24</b>	<b>5</b>	<b>8</b>	<b>18</b>	<b>36</b>	<b>73</b>	<b>173</b>	<b>304</b>	<b>526</b>	<b>1,285</b>	<b>1,641</b>
<b>Infectious and parasitic diseases:-</b>	<b>1</b>	<b>A00-B99</b>	<b>40</b>	<b>0</b>	<b>1</b>	<b>0</b>	<b>0</b>	<b>5</b>	<b>1</b>	<b>1</b>	<b>3</b>	<b>8</b>	<b>14</b>	<b>7</b>
Tuberculosis	2	A15-A19,B90	5	0	0	0	0	0	0	0	0	3	2	0
Meningococcal infection	3	A39	1	0	0	0	0	0	0	0	0	0	0	0
AIDS (HIV Disease)	4	B20-B24	2	0	0	0	0	1	1	0	0	0	0	0
Viral Hepatitis	5	B15-B19	1	0	0	0	0	1	0	0	0	0	0	0
Other infectious and parasitic diseases			31	0	0	0	0	3	0	1	3	5	12	7
<b>Neoplasms</b>	<b>6</b>	<b>C00-D48</b>	<b>1,071</b>	<b>0</b>	<b>0</b>	<b>1</b>	<b>1</b>	<b>8</b>	<b>34</b>	<b>95</b>	<b>175</b>	<b>241</b>	<b>334</b>	<b>182</b>
<b>Malignant Neoplasms of the:-</b>	<b>7</b>	<b>C00-C97</b>	<b>1,042</b>	<b>0</b>	<b>0</b>	<b>1</b>	<b>1</b>	<b>7</b>	<b>33</b>	<b>95</b>	<b>174</b>	<b>238</b>	<b>321</b>	<b>172</b>
Lip, oral cavity, pharynx	8	C00-C14	9	0	0	0	0	0	0	2	1	2	3	1
Oesophagus	9	C15	27	0	0	0	0	0	0	1	1	8	8	9
Stomach	10	C16	35	0	0	0	0	0	0	2	5	8	10	10
Colon	11	C18	56	0	0	0	0	1	2	7	4	8	20	14
Rectum and anus	12	C19-C21	49	0	0	0	0	0	2	2	1	10	17	10
Liver and the intrahepatic bile ducts	13	C22	19	0	0	0	0	0	1	2	1	5	9	1
Pancreas	14	C25	65	0	0	0	0	0	1	3	11	18	21	11
Larynx and trachea/bronchus /lung	15	C32-C34	200	0	0	0	0	1	2	17	42	48	75	15
Skin	16	C43	10	0	0	0	0	0	0	1	0	5	0	4
Breast	17	C50	195	0	0	0	0	1	10	21	31	50	44	38
Cervix uteri	18	C53	26	0	0	0	0	0	7	7	2	3	6	1
Other parts of uterus	19	C54-C55	28	0	0	0	0	0	0	4	7	4	4	1
Ovary	20	C56	66	0	0	0	0	0	3	5	20	16	18	4
Prostate	21	C61	0	0	0	0	0	0	0	0	0	0	0	0
Kidney	22	C64	19	0	0	0	0	0	0	5	3	6	1	4
Bladder	23	C67	14	0	0	0	0	0	0	1	1	6	5	1
Lymph/haematopoietic tissue	24	C81-C96	81	0	0	1	0	2	1	4	11	14	28	20
Other malignant neoplasms			143	0	0	0	1	2	4	12	25	27	47	25
<b>Diseases of the blood and blood-forming organs, immunological disorders</b>	<b>25</b>	<b>D50-D89</b>	<b>14</b>	<b>1</b>	<b>0</b>	<b>0</b>	<b>0</b>	<b>0</b>	<b>0</b>	<b>0</b>	<b>1</b>	<b>2</b>	<b>6</b>	<b>4</b>
<b>Endocrine, Nutritional and metabolic diseases</b>	<b>26</b>	<b>E00-E90</b>	<b>98</b>	<b>0</b>	<b>1</b>	<b>2</b>	<b>2</b>	<b>2</b>	<b>1</b>	<b>3</b>	<b>7</b>	<b>9</b>	<b>42</b>	<b>29</b>
Diabetes mellitus	27	E10-E14	71	0	0	0	1	1	1	2	6	6	35	19
<b>Diseases of the nervous system and the sense organs</b>	<b>28</b>	<b>F00-F99</b>	<b>117</b>	<b>0</b>	<b>0</b>	<b>1</b>	<b>0</b>	<b>0</b>	<b>0</b>	<b>0</b>	<b>2</b>	<b>4</b>	<b>27</b>	<b>83</b>
<b>Mental and behavioural disorders</b>	<b>31</b>	<b>G00-H95</b>	<b>183</b>	<b>3</b>	<b>1</b>	<b>1</b>	<b>2</b>	<b>3</b>	<b>4</b>	<b>6</b>	<b>13</b>	<b>24</b>	<b>48</b>	<b>78</b>
Meningitis	32	G00-G03	0	0	0	0	0	0	0	0	0	0	0	0
<b>Diseases of the Circulatory System:-</b>	<b>33</b>	<b>I00-I99</b>	<b>1,416</b>	<b>0</b>	<b>0</b>	<b>0</b>	<b>1</b>	<b>7</b>	<b>11</b>	<b>23</b>	<b>47</b>	<b>128</b>	<b>459</b>	<b>740</b>
Ischaemic heart disease	34	I20-I25	636	0	0	0	0	1	5	5	19	59	209	338
of which: (Acute myocardial infarction)		I21	337	0	0	0	0	1	1	3	8	34	120	164
Other heart disease	35	I30-I33,I39-I52	206	0	0	0	1	2	1	5	10	17	54	116
Cerebrovascular disease	36	I60-I69	350	0	0	0	0	2	4	7	16	27	106	188
Other diseases of circulatory system			224	0	0	0	0	2	1	6	2	25	90	98



**Table 14 Infant and neonatal mortality by area of residence of deceased**

Area of residence	Infant mortality		Neonatal mortality	
	Number	Rate	Number	Rate
<b>STATE</b>	<b>59</b>	<b>3.1</b>	<b>41</b>	<b>2.2</b>
<b>LEINSTER</b>	<b>33</b>	<b>3.1</b>	<b>22</b>	<b>2.1</b>
Carlow	0	0.0	0	0.0
Dublin City	6	3.2	4	2.1
South Dublin	3	2.7	3	2.7
Fingal	7	5.1	3	2.2
Dun Laoghaire Rathdown	0	0.0	0	0.0
Kildare	4	3.8	2	1.9
Kilkenny	1	2.8	1	2.8
Laois	1	3.0	1	3.0
Longford	0	0.0	0	0.0
Louth	0	0.0	0	0.0
Meath	5	5.6	3	3.4
Offaly	0	0.0	0	0.0
Westmeath	0	0.0	0	0.0
Wexford	2	3.2	2	3.2
Wicklow	4	6.2	3	4.6
<b>MUNSTER</b>	<b>16</b>	<b>3.2</b>	<b>11</b>	<b>2.2</b>
Clare	3	6.5	3	6.5
Cork City	3	7.4	2	4.9
Cork County	5	2.9	3	1.8
Kerry	0	0.0	0	0.0
Limerick City	1	4.5	0	0.0
Limerick County	2	3.5	2	3.5
North Tipperary	2	5.9	1	2.9
South Tipperary	0	0.0	0	0.0
Waterford City	0	0.0	0	0.0
Waterford County	0	0.0	0	0.0
<b>CONNACHT</b>	<b>6</b>	<b>2.9</b>	<b>4</b>	<b>2.0</b>
Galway City	0	0.0	0	0.0
Galway County	2	2.6	2	2.6
Leitrim	0	0.0	0	0.0
Mayo	3	6.1	2	4.1
Roscommon	1	4.8	0	0.0
Sligo	0	0.0	0	0.0
<b>ULSTER (PART OF)</b>	<b>4</b>	<b>3.7</b>	<b>4</b>	<b>3.7</b>
Cavan	1	3.1	1	3.1
Donegal	3	5.4	3	5.4
Monaghan	0	0.0	0	0.0
<b>REGIONAL AUTHORITIES:</b>				
Border	4	2.1	4	2.1
Midland	1	0.9	1	0.9
West	6	3.5	4	2.3
Dublin	16	3.1	10	2.0
Mid-East	13	5.0	8	3.1
Mid-West	8	5.0	6	3.8
South-East	3	1.5	3	1.5
South-West	8	3.0	5	1.9

Infant mortality rates: Deaths of infants under one year per 1,000 live births, classified by area of residence of mother.

Neonatal mortality rates: Deaths of infants under 28 days per 1,000 live births, classified by area of residence of mother.

Infant and neonatal mortality rates in some areas, based on small numbers are subject to considerable fluctuation and caution should be exercised in their interpretation.

## **Appendix**

## Glossary of terms

### **NUTS III Regional Authority areas**

Border, Midland, West, Dublin, Mid-East, Mid-West, South-East, South-West

Border: Cavan, Donegal, Leitrim, Louth, Monaghan, Sligo.

Midland: Laois, Longford, Offaly, Westmeath.

West: Galway City, Galway County, Mayo, Roscommon.

Dublin: Dublin City, South Dublin, Fingal, Dun Laoghaire-Rathdown.

Mid-East: Kildare, Meath, Wicklow.

Mid-West: Clare, Limerick City, Limerick County, North Tipperary.

South-East: Carlow, Kilkenny, South Tipperary, Waterford City, Waterford County, Wexford.

South-West: Cork City, Cork County, Kerry.

**Causes of death Eurostat shortlist (August 1998)**

Nr	Disease or external cause	ICD-9 Code	ICD-10 Code
00	All causes of death	001-E999	A00-Y89
01	Infectious and Parasitic Diseases:-	001-139,279.8	A00-B99
02	Tuberculosis	010-018,137	A15-A19,B90
03	Meningococcal Infection	036	A39
04	AIDS (HIV Disease)	042-044,279.8	B20-B24
05	Viral Hepatitis	070	B15-B19
	other Infectious and Parasitic Diseases	Rem (001-139)	Rem (A00-B99)
06	Neoplasms	140-239	C00-D48
07	Malignant Neoplasms of the:-	140-208	C00-C97
08	Lip, Oral Cavity, Pharynx	140-149	C00-C14
09	Oesophagus	150	C15
10	Stomach	151	C16
11	Colon	153	C18
12	Rectum and Anus	154	C19-C20-C21
13	Liver and the Intrahepatic Bile Ducts	155	C22
14	Pancreas	157	C25
15	Larynx and Trachea/Bronchus/Lung	161-162	C32-C34
16	Skin	172	C43
17	Breast	174-175	C50
18	Cervix Uteri	180	C53
19	Other Parts of the Uterus	179,182	C54-C55
20	Ovary	183.0	C56
21	Prostate	185	C61
22	Kidney	189.0	C64
23	Bladder	188	C67
24	Lymph/Haematopoietic Tissue	200-208	C81-C96
	other Malignant Neoplasms	Rem (140-208)	Rem. (C00-C97)
25	Diseases of the Blood and Blood-forming Organs, Immunological disorders <sup>1</sup>	279-289	D50-D89
26	Endocrine, Nutritional and Metabolic Diseases	240-278	E00-E90
27	Diabetes Mellitus	250	E10-E14
28	Mental and Behavioural Disorders	290-319	F00-F99
29	Alcohol abuse (including Alcoholic Psychosis)	291,303	F10
30	Drug Dependence, Toxicomania	304-305	F11-F16,F18-F19
31	Diseases of the Nervous System and the Sense Organs	320-389	G00-H95
32	Meningitis	320-322	G00-G03
33	Diseases of the Circulatory System:-	390-459	I00-I99
34	Ischaemic Heart Disease	410-414	I20-I25
	<i>(Acute Myocardial Infarction)</i>	410	I21
35	Other Heart Disease	420-423,425-429	I30-I33,I39-I52
36	Cerebrovascular Disease	430-438	I60-I69
	other Diseases of the Circulatory System	Rem (390-459)	Rem. (I00-I99)
37	Diseases of the Respiratory System	460-519	J00-J99
38	Influenza	487	J10-J11
39	Pneumonia	480-486	J12-J18
40	Chronic Lower Respiratory Disease	490-494,496	J40-J47
41	Asthma	493	J45-J46
	other Diseases of the Respiratory System	Rem (460-519)	Rem. (J00-J99)
42	Diseases of the Digestive System	520-579	K00-K93
43	Ulcer of Stomach, Duodenum and Jejunum	531-534	K25-K28
44	Chronic Liver Disease	571.0-571.9	K70,K73-K74
	other Diseases of the Digestive System	Rem (520-579)	Rem. (K00-K93)
45	Diseases of the Skin and Subcutaneous Tissue	680-709	L00-L99
46	Diseases of the Musculoskeletal System/Connective Tissue	710-739	M00-M99
47	Rheumatoid Arthritis and Osteoarthritis	714-715	M05-M06,M15-M19
48	Diseases of the Genitourinary System	580-629	N00-N99
49	Diseases of the Kidney and Ureter	580-594	N00-N29
50	Complications of Pregnancy, Childbirth and Puerperium	630-676	O00-O99
51	Certain Conditions Originating in the Perinatal Period (stillbirths not included)	760-779	P00-P96
52	Congenital Malformations and Chromosomal Abnormalities	740-759	Q00-Q99
53	Congenital malformations of the Nervous System	740-742	Q00-Q07
54	Congenital malformations of the Circulatory System	745-747	Q20-Q28
55	Symptoms, Signs, Abnormal Findings, Ill-defined Causes	780-799	R00-R99
56	Sudden Infant Death Syndrome	798.0	R95
57	Unknown and Unspecified Causes	798.1-9,799	R96-R99
	Injury and Poisoning	800-999	S00-T98
58	External Causes of Injury and Poisoning (included in the Foregoing)	E800-E999	V01-Y89
59	Accidents	E800-E929	V01-X59
60	Transport Accidents	E800-E848	V01-V99
	Road transport Accidents	E810-E829, E929.0	V01-V80,V87,V89,Y85
	Motor vehicle transport Accidents	E810-E819	
61	Accidental Falls	E880-E888	W00-W19
62	Accidental Poisoning	E850-E869	X40-X49
	other accidents	Rem (E800-E929)	Rem (V01-X59)
63	Suicide and Intentional Self Harm	E950-E959	X60-X84
64	Homicide/Assault	E960-E969	X85-Y09
65	Cause Undetermined	E980-E989	Y10-Y34
	other External Causes	Rem (E930-E999)	

<sup>1</sup> 279.8 not included

**Estimated Population classified by Sex and Age Group, 2003 - 2008***thousands*

Sex and Age Group	Persons in April of each year					
	2003	2004	2005	2006 <sup>1</sup>	2007 <sup>2</sup>	2008 <sup>2</sup>
<b>Total Persons</b>	<b>3,979.9</b>	<b>4,045.2</b>	<b>4,133.8</b>	<b>4,239.8</b>	<b>4,339.0</b>	<b>4,422.1</b>
0 - 4 years	284.3	290.7	296.5	302.3	312.3	327.9
5 - 9 "	268.7	274.9	280.6	288.3	295.9	303.4
10 - 14 "	281.7	278.2	276.3	273.9	275.6	281.0
15 - 19 "	304.7	298.4	292.8	290.3	286.0	283.9
20 - 24 "	334.0	336.1	339.5	342.5	347.8	334.0
25 - 29 "	317.4	325.4	345.2	373.1	405.1	416.7
30 - 34 "	316.1	325.1	335.8	349.4	358.0	366.9
35 - 39 "	296.4	303.5	312.1	322.1	331.7	342.1
40 - 44 "	279.2	286.0	294.1	301.3	305.8	310.2
45 - 49 "	253.7	259.2	265.4	274.7	279.8	286.1
50 - 54 "	235.1	238.1	243.1	247.1	252.6	257.2
55 - 59 "	206.6	213.9	221.4	225.3	227.4	232.0
60 - 64 "	160.3	166.0	172.1	181.7	190.5	199.2
65 - 69 "	135.0	137.5	140.8	143.4	143.5	148.8
70 - 74 "	113.8	115.7	117.4	119.2	119.2	120.8
75 - 79 "	89.5	90.0	91.0	92.5	92.1	93.6
80 - 84 "	61.7	63.1	64.0	64.9	65.4	65.2
85 years and over	41.9	43.4	45.7	48.0	50.3	53.2
<b>Total males</b>	<b>1,976.9</b>	<b>2,011.9</b>	<b>2,061.8</b>	<b>2,121.2</b>	<b>2,171.1</b>	<b>2,206.3</b>
0 - 4 years	145.4	148.7	151.7	154.6	160.5	168.2
5 - 9 "	137.8	141.2	144.3	148.0	151.3	154.9
10 - 14 "	144.4	142.8	142.0	140.5	141.3	144.1
15 - 19 "	155.9	152.7	149.8	148.2	145.4	144.6
20 - 24 "	167.0	168.2	170.0	172.8	175.0	165.7
25 - 29 "	158.6	162.9	174.1	189.3	204.7	209.4
30 - 34 "	158.2	161.8	168.7	177.5	182.6	185.3
35 - 39 "	147.4	152.4	157.8	163.8	169.1	174.0
40 - 44 "	138.9	142.5	147.1	151.4	153.6	155.7
45 - 49 "	126.9	129.7	132.9	138.0	140.6	143.4
50 - 54 "	118.5	120.1	122.9	124.6	127.1	129.2
55 - 59 "	104.9	108.5	112.0	113.9	114.9	117.0
60 - 64 "	80.7	83.8	86.7	91.6	96.0	100.4
65 - 69 "	66.0	67.3	69.1	70.9	71.3	73.6
70 - 74 "	53.2	54.6	55.7	56.5	56.6	57.5
75 - 79 "	37.3	37.8	38.8	40.1	40.6	41.8
80 - 84 "	23.4	23.9	24.3	24.7	25.0	25.0
85 years and over	12.6	13.2	14.0	14.8	15.5	16.6
<b>Total females</b>	<b>2,002.9</b>	<b>2,033.3</b>	<b>2,072.0</b>	<b>2,118.7</b>	<b>2,167.9</b>	<b>2,215.8</b>
0 - 4 years	138.9	142.0	144.8	147.7	151.8	159.7
5 - 9 "	130.9	133.8	136.3	140.3	144.6	148.5
10 - 14 "	137.3	135.4	134.4	133.4	134.2	136.9
15 - 19 "	148.8	145.7	143.0	142.0	140.6	139.3
20 - 24 "	167.0	167.9	169.5	169.7	172.8	168.3
25 - 29 "	158.8	162.5	171.1	183.8	200.4	207.3
30 - 34 "	157.9	163.4	167.0	171.9	175.3	181.6
35 - 39 "	149.0	151.1	154.4	158.3	162.5	168.1
40 - 44 "	140.3	143.5	147.1	149.9	152.2	154.5
45 - 49 "	126.8	129.6	132.6	136.8	139.3	142.8
50 - 54 "	116.6	118.0	120.2	122.5	125.5	128.0
55 - 59 "	101.6	105.4	109.4	111.4	112.5	115.0
60 - 64 "	79.6	82.2	85.4	90.2	94.6	98.8
65 - 69 "	69.0	70.2	71.7	72.5	72.2	75.2
70 - 74 "	60.6	61.1	61.7	62.6	62.6	63.3
75 - 79 "	52.3	52.2	52.2	52.3	51.5	51.8
80 - 84 "	38.3	39.2	39.7	40.2	40.4	40.1
85 years and over	29.3	30.2	31.7	33.2	34.8	36.6

<sup>1</sup> De Facto<sup>2</sup> Preliminary