



An Phríomh-Oifig Staidrimh
Central Statistics Office

Vital Statistics

Third Quarter

2009

Published by the Stationery Office, Dublin, Ireland.

To be purchased from the:

Central Statistics Office, Information Section, Skehard Road, Cork,

Government Publications Sales Office, Sun Alliance House,
Molesworth Street, Dublin 2,

or through any bookseller.

Compiled by the Central Statistics Office on behalf of the Department of
Health and Children.

[No. 582]

Price €6.00

March 2010

© Government of Ireland 2010

Material compiled and presented by
Central Statistics Office.

Reproduction is authorised, except for commercial
purposes, provided the source is acknowledged.

ISSN 0790-7710

ISBN 978-1-4064-2361-7

Contents

Third Quarter 2009

	Page
Commentary	4
Tables	
Table 1	Marriages, births, deaths and natural increase 8
Table 2	Annual marriage, birth, death and natural increase rates per 1,000 population 9
Table 3	Births registered, classified by area of residence of mother 10
Table 4	Births registered, classified by age of mother and previous number of liveborn children 11
Table 5	Number and percentage of births within and outside marriage, classified by age of mother 12
Table 6	Number and percentage of births registered within and outside marriage, classified by area of residence of mother 13
Table 7	Births registered, classified by area of residence and age of mother 14
Table 8	Births registered outside marriage, classified by area of residence and age of mother 15
Table 9	Deaths registered by county of residence of deceased 16
Table 10	Deaths registered by cause of death and county of residence of deceased 17
Table 11	Deaths registered classified by cause and age group 18
Table 12	Male deaths registered, classified by cause and age group 20
Table 13	Female deaths registered classified by cause and age group 22
Table 14	Infant and neonatal mortality by area of residence of deceased 24
Appendix	
	Glossary of terms 26
	Causes of death Eurostat shortlist (August 1998) 27
	Estimated population classified by sex and age group, 2004-2009 28

Third Quarter 2009

Commentary

Fig. 1 Annual birth, death and marriage rates per 1,000 population

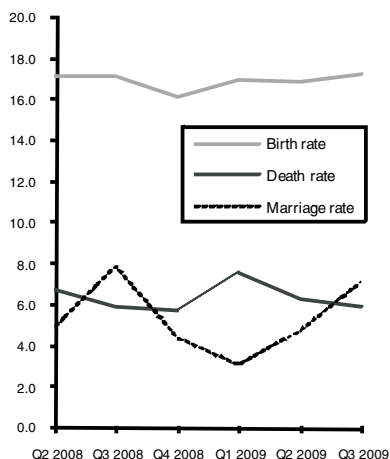


Fig. 2 Birth Order Q3 2009

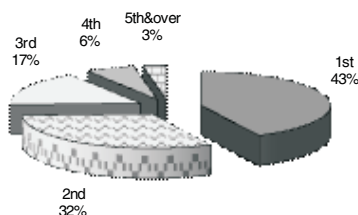
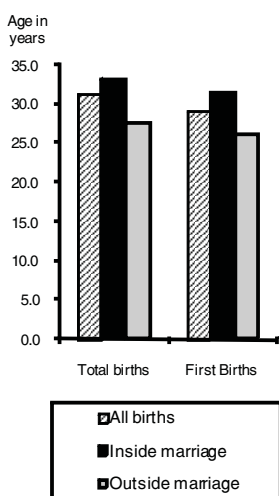


Fig. 3 Average age at maternity Q3 2009



Introduction

This report has been prepared by the Central Statistics Office for the Minister for Health and Children in accordance with the provisions of Section 2 of the Vital Statistics and Births, Deaths and Marriages Registration Act, 1952 and Section 73 of the Civil Registration Act 2004.

Births

There were 19,289 births registered in quarter 3 of 2009, 9,947 males and 9,342 females, an increase of 298 on the quarter 3 figure of 2008. The quarter 3 2009 total is 38.1% higher than in 2000 when 13,967 babies were registered. See tables 1 and 3.

The 19,289 births represent an annual birth rate of 17.3 per 1,000 of the population, 0.1 above quarter 3 of 2008. This rate is 2.6 per 1,000 population higher than in 2000. See table 2 and fig. 1.

Birth order

A total of 8,170 births (42.6%) were to first time mothers in quarter 3 of 2009. This compares to 5,641 (40.6%) first births registered in quarter 3 2000. Second time mothers had 6,100 births (31.8%). See table 4 and fig. 2.

Age of mothers

The average age of mothers for births registered in quarter 3 2009 was 31.2 years, an increase of 0.1 on quarter 3 2008, and 1 year more than in quarter 3 2000. The average age of mothers having their first child in quarter 3 2009 was 29.1 years. See tables 1, 7 and fig. 3.

Births outside marriage

There were 6,256 births registered as outside marriage in quarter 3 of 2009. This accounted for 32.4% of all births, a decrease of 0.7 on quarter 3 2008. The highest percentage of births outside marriage occurred in Cork City at 47%, while the lowest percentage was in Leitrim at 20%. In quarter 3 2000, 4,451 births were registered outside marriage or 31.9% of all births. See tables 1 and 6.

Deaths

There were 6,638 deaths registered in quarter 3 2009, 3,505 males and 3,133 females. This represents an annual death rate of 6.0 per 1,000 population. The quarter 3 2009 total is 0.5% lower than in 2008 when 6,674 deaths were registered. See tables 1, 9 and fig. 1.

Age at death

There were 80 infant deaths registered in quarter 3 2009 giving an infant mortality rate of 4.1 deaths per 1,000 live births. Neonatal deaths are deaths of infants at ages under 4 weeks. There were 53 neonatal deaths registered in quarter 3 2009, a neonatal mortality rate of 2.7 deaths per 1,000 live births. See tables 1, 2 and fig. 4.

Fig. 4 Infant and neonatal mortality rates per 1,000 live births

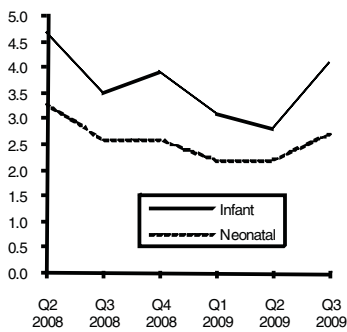


Fig. 5 Death rates for ages 65 & over per 1,000 relevant population

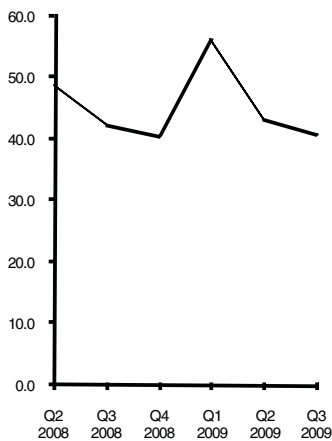
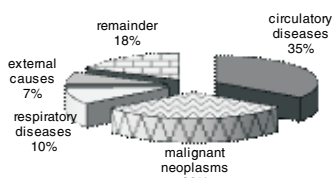


Fig. 6 Principal causes of death Q3 2009



There were 5,039 deaths of persons aged 65 and over registered in quarter 3 2009. This represents an annual death rate of 40.7 per 1,000 population aged 65 and over. See tables 1, 2 and fig. 5.

Cause of death

- **Diseases of the Circulatory System:**

Diseases of the Circulatory System accounted for 2,303 deaths, or an annual rate of 2.1 per 1,000 population. Of these, 1,218 were due to Ischaemic Heart Disease and 500 to Cerebrovascular Disease. See table 11 and fig. 6.

- **Malignant Neoplasms:**

There were 1,991 deaths from malignant neoplasms. This is equivalent to an annual rate of 1.8 per 1,000 population. See table 11 and fig. 6.

- **Diseases of the Respiratory System:**

Deaths from pneumonia numbered 247; chronic lower respiratory disease accounted for 282 deaths and 153 deaths resulted from other respiratory diseases. See table 11 and fig. 6.

Natural increase

The natural increase in the population (births minus deaths) for quarter 3 2009 was 12,651. This represents a rate of 11.3 per 1,000 population, 0.2 above quarter 3 of 2008. See tables 1 and 2.

Marriages

The number of marriages registered during the quarter was 8,050, equivalent to an annual marriage rate of 7.2 per 1,000 population, 0.7 below the corresponding quarter of 2008. The quarter 3 2009 total is 6.0% higher than in quarter 3 2000 when 7,593 marriages were registered. See tables 1, 2 and fig. 1.

Population

The estimated population in April 2009 was 4,459,300.

Methodology

All figures in this report are classified by quarter of registration. Delay in the registration of some births, deaths and marriages result in them being included in a later period in these quarterly reports.

Changes in methodology

The extension of the Limerick City boundary, which came into operation on 1st March 2008, has been taken into account in the compilation of the statistics from the Second Quarter of 2008. As a result, data for Limerick City and County are not directly comparable with any quarter prior to the Second Quarter 2008.

This publication continues with the 3 major changes in the methods by which mortality statistics are compiled. These changes were introduced in the Vital Statistics First Quarter 2007 publication.

- 1) Underlying Cause of Death is classified according to International Classification of Diseases, Version 10 (ICD10) instead of to International Classification of Diseases, Version 9 (ICD9). In addition, this and future publications will incorporate certain official updates to ICD-10. In particular, mental and behavioural disorders due to psychoactive substance use (F10-F19), with mention of intestinal infectious diseases (A00-A09), accidental, intentional self and undetermined intent poisoning by and exposure to noxious substances (X40-X49, X60-X69, Y10-Y19) or assault by chemical or noxious substance (X85-X90), are now coded to the latter.

<http://www.who.int/classifications/icd/OfficialWHOUpdatesCombined1996-2008VOLUME2.pdf>

- 2) Deaths where there was not an inquest have been coded using the automated coding system developed by the U.S National Centre for Health Statistics (NCHS). Previously the Underlying Cause of Death was chosen manually for all deaths.
- 3) All deaths registered in the quarter have been included in the statistics, in some cases with a provisional cause of death. Prior to quarter 1 of 2007 the practice was not to include deaths in the quarterly statistics until the cause of death had been definitely established.

Because of these changes, caution should be taken in directly comparing these mortality statistics with those of previous quarters. Many countries have found that moving to ICD10 does affect certain specific categories of causes of death. In particular, a significant drop in the number of deaths attributed to pneumonia and bronchopneumonia has been observed in some countries after moving to ICD10. These deaths were instead assigned to other conditions included on the death certificate.

The effect of the third change above has been to increase the number of deaths in our statistics as compared with previous years. Statistics for deaths due to external causes are particularly affected by this change. The previous method meant that some deaths were included in a later quarter of the year from when they had been registered, because of the delay involved in establishing a definite cause of death.

Tables

Table 1 Marriages, births, deaths and natural increase

	Marriages ¹	Live Births				Deaths ²				Natural Increase
		Total	First	Outside marriage	Average Age	Total	Infant	Neonatal	65 & over	
Quarter 1										
2000	2,200	13,984	5,693	4,656	30.0	9,804	86	59	8,062	4,180
2001	2,168	14,785	5,963	4,877	30.1	8,408	81	56	6,747	6,377
2002	2,484	14,972	6,127	4,877	30.3	7,749	73	51	6,281	7,223
2003	2,571	15,238	6,158	5,080	30.3	7,756	67	52	6,259	7,482
2004	2,676	15,599	6,082	5,181	30.7	7,873	72	56	6,347	7,726
2005	2,892	15,334	6,290	5,147	30.9	7,352	65	47	5,920	7,982
2006	3,267	15,958	6,449	5,481	30.9	7,320	56	36	6,040	8,638
2007	3,399	17,473	7,226	5,905	31.1	7,910	48	37	6,326	9,563
2008	3,242	19,154	8,088	6,480	31.1	7,525	63	42	6,011	11,629
2009	3,450	18,787	7,897	6,405	31.2	8,419	59	41	6,739	10,368
Quarter 2										
2000	4,670	13,794	5,427	4,260	30.3	7,650	77	52	5,974	6,144
2001	4,533	14,303	5,615	4,307	30.5	7,260	74	55	5,808	7,043
2002	4,810	15,247	5,858	4,672	30.5	7,680	91	64	6,074	7,567
2003	4,827	15,582	6,095	4,689	30.6	7,203	83	59	5,625	8,379
2004	4,719	15,535	5,897	4,874	30.8	6,881	74	53	5,351	8,654
2005	5,374	15,306	5,922	4,810	31.1	7,349	70	52	5,826	7,957
2006	5,094	15,979	6,315	5,056	31.1	6,967	65	44	5,488	9,012
2007	5,536	17,127	6,926	5,428	31.2	6,902	60	34	5,394	10,225
2008	5,370	19,040	7,712	6,174	31.2	7,569	90	62	5,857	11,471
2009	5,342	18,844	7,858	6,114	31.3	7,020	52	41	5,356	11,824
Quarter 3										
2000	7,593	13,967	5,641	4,451	30.2	6,832	89	54	5,372	7,135
2001	7,557	14,688	5,901	4,472	30.3	6,974	97	67	5,403	7,714
2002	7,580	15,593	6,333	4,855	30.4	6,941	68	50	5,391	8,652
2003	7,996	15,909	6,240	4,981	30.6	6,639	85	68	5,147	9,270
2004	8,168	15,605	6,171	5,100	30.8	6,473	72	43	5,123	9,132
2005	8,347	16,170	6,548	5,101	30.9	6,380	50	33	4,919	9,790
2006	8,341	16,920	6,891	5,541	31.0	6,657	58	46	5,146	10,263
2007	8,733	18,554	7,636	6,019	31.1	6,455	48	32	4,976	12,099
2008	8,765	18,991	7,960	6,286	31.1	6,674	67	50	5,108	12,317
2009	8,050	19,289	8,170	6,256	31.2	6,638	80	53	5,039	12,651
Quarter 4										
2000	4,705	12,494	5,236	3,868	30.2	6,829	70	53	5,324	5,665
2001	4,988	14,106	5,915	4,393	30.3	7,170	85	57	5,422	6,936
2002	5,682	14,709	5,989	4,411	30.5	6,978	74	49	5,378	7,731
2003	4,908	14,788	5,883	4,563	30.7	7,225	76	52	5,568	7,563
2004	5,056	14,945	5,975	4,783	30.9	6,924	82	62	5,253	8,021
2005	4,742	14,232	5,861	4,470	31.1	6,360	59	45	4,827	7,872
2006	5,139	15,380	6,456	5,217	31.0	6,535	58	42	4,946	8,845
2007	4,876	17,466	7,481	5,818	31.1	6,783	65	46	5,128	10,683
2008	4,866	17,880	7,608	5,904	31.2	6,424	70	46	4,871	11,456
2009										
Total										
2000	19,168	54,239	21,997	17,235	30.2	31,115	322	218	24,732	23,124
2001	19,246	57,882	23,394	18,049	30.3	29,812	337	235	23,380	28,070
2002	20,556	60,521	24,307	18,815	30.4	29,348	306	214	23,124	31,173
2003	20,302	61,517	24,376	19,313	30.6	28,823	311	231	22,599	32,694
2004	20,619	61,684	24,125	19,938	30.8	28,151	300	214	22,074	33,533
2005	21,355	61,042	24,621	19,528	31.0	27,441	244	177	21,492	33,601
2006	21,841	64,237	26,111	21,295	31.0	27,479	237	168	21,620	36,758
2007	22,544	70,620	29,269	23,170	31.1	28,050	221	149	21,824	42,570
2008	22,243	75,065	31,368	24,844	31.1	28,192	290	200	21,847	46,873
2009										

¹ 2002, 2005 and 2006 marriage figures are final. All other marriage figures are subject to revision.² See 'Commentary' for changes in methodology effective from 2007.

Table 2 Annual marriage, birth, death and natural increase rates per 1,000 population

	Marriages	Live Births			Deaths				Natural Increase
		Total	% First births ¹	% Outside marriage	Total	Infant Mortality ²	Neonatal Mortality ³	65 & over	
Quarter 1									
2000	2.4	14.9	40.9	33.3	10.5	6.1	4.2	76.4	4.5
2001	2.3	15.6	40.5	33.0	8.9	5.5	3.8	63.5	6.7
2002	2.6	15.6	41.2	32.6	8.1	4.9	3.4	58.5	7.5
2003	2.6	15.6	40.7	33.3	7.9	4.4	3.4	57.4	7.6
2004	2.7	15.7	40.4	33.2	7.9	4.6	3.6	57.5	7.8
2005	2.9	15.2	41.3	33.6	7.3	4.2	3.1	52.7	7.9
2006	3.2	15.4	41.1	34.3	7.1	3.5	2.3	52.6	8.4
2007	3.2	16.5	42.2	33.8	7.5	2.7	2.1	54.1	9.0
2008	3.0	17.7	42.6	33.8	6.9	3.3	2.2	51.1	10.7
2009	3.1	17.0	42.2	34.1	7.6	3.1	2.2	56.0	9.4
Quarter 2									
2000	4.9	14.6	39.5	30.9	8.1	5.6	3.8	56.3	6.5
2001	4.7	14.9	39.5	30.1	7.5	5.2	3.8	54.1	7.3
2002	4.9	15.6	38.8	30.6	7.8	6.0	4.2	55.7	7.7
2003	4.9	15.7	39.5	30.1	7.2	5.3	3.8	50.9	8.4
2004	4.7	15.4	38.8	31.4	6.8	4.8	3.4	47.6	8.6
2005	5.2	14.8	38.8	31.4	7.1	4.6	3.4	50.8	7.7
2006	4.8	15.1	41.1	31.6	6.6	4.1	2.8	46.9	8.5
2007	5.1	15.8	40.9	31.7	6.4	3.5	2.0	45.9	9.4
2008	4.9	17.2	40.8	32.4	6.8	4.7	3.3	48.6	10.4
2009	4.8	16.9	42.0	32.4	6.3	2.8	2.2	43.3	10.6
Quarter 3									
2000	8.0	14.7	40.6	31.9	7.2	6.4	3.9	50.6	7.5
2001	7.9	15.3	40.4	30.4	7.3	6.6	4.6	50.3	8.0
2002	7.7	15.9	41.0	31.1	7.1	4.4	3.2	49.5	8.8
2003	8.0	16.0	39.6	31.3	6.7	5.3	4.3	46.6	9.3
2004	8.1	15.4	39.8	32.7	6.4	4.6	2.8	45.6	9.0
2005	8.1	15.6	40.7	31.5	6.2	3.1	2.0	42.9	9.5
2006	7.9	16.0	41.6	32.7	6.3	3.4	2.7	44.0	9.7
2007	8.1	17.1	41.4	32.4	6.0	2.6	1.7	42.3	11.2
2008	7.9	17.2	42.1	33.1	6.0	3.5	2.6	42.4	11.1
2009	7.2	17.3	42.6	32.4	6.0	4.1	2.7	40.7	11.3
Quarter 4									
2000	5.0	13.2	42.1	31.0	7.2	5.6	4.2	50.1	6.0
2001	5.2	14.7	42.2	31.1	7.5	6.0	4.0	50.5	7.2
2002	5.8	15.0	41.2	30.0	7.1	5.0	3.3	49.3	7.9
2003	4.9	14.9	40.9	30.9	7.3	5.1	3.5	50.4	7.6
2004	5.0	14.8	40.3	32.0	6.8	5.5	4.1	46.7	7.9
2005	4.6	13.8	41.4	31.4	6.2	4.1	3.2	42.1	7.6
2006	4.8	14.5	42.3	33.9	6.2	3.8	2.7	42.3	8.3
2007	4.5	16.1	43.2	33.3	6.3	3.7	2.6	43.6	9.8
2008	4.4	16.2	42.8	33.0	5.8	3.9	2.6	40.5	10.4
2009									
Total									
2000	5.1	14.3	40.8	31.8	8.2	5.9	4.0	58.2	6.1
2001	5.0	15.0	40.7	31.2	7.7	5.8	4.1	54.4	7.3
2002	5.2	15.5	40.5	31.1	7.5	5.1	3.5	53.0	8.0
2003	5.1	15.5	40.2	31.4	7.2	5.1	3.8	51.1	8.2
2004	5.1	15.2	39.8	32.3	7.0	4.9	3.5	49.1	8.3
2005	5.2	14.8	40.5	32.0	6.6	4.0	2.9	46.8	8.1
2006	5.2	15.2	41.5	33.2	6.5	3.7	2.6	46.2	8.7
2007	5.2	16.3	41.9	32.8	6.5	3.1	2.1	46.4	9.8
2008	5.0	17.0	42.1	33.1	6.4	3.9	2.7	45.4	10.6
2009									

¹ First births divided by the total number of live births (excluding those with unstated parity), multiplied by 100.² Infant mortality is the number of infant deaths per 1,000 live births.³ Neonatal mortality is the number of neonatal (infants aged under 4 weeks) deaths per 1,000 live births.

Table 3 Births registered, classified by area of residence of mother, July - September 2009

Area of residence	Total	Male	Female	Rate ¹
STATE	19,289	9,947	9,342	17.3
LEINSTER	10,998	5,665	5,333	18.2
Carlow	246	112	134	18.6
Dublin City	2,065	1,065	1,000	15.5
South Dublin	1,192	598	594	18.4
Fingal	1,452	784	668	23.0
Dun Laoghaire Rathdown	747	410	337	14.6
Kildare	1,005	510	495	20.5
Kilkenny	351	200	151	15.2
Laois	385	193	192	21.8
Longford	193	91	102	21.3
Louth	509	263	246	17.4
Meath	896	452	444	20.9
Offaly	335	177	158	18.0
Westmeath	403	192	211	19.3
Wexford	597	293	304	17.2
Wicklow	622	325	297	18.7
MUNSTER	5,154	2,715	2,439	16.7
Clare	509	265	244	17.4
Cork City	415	223	192	13.2
Cork County	1,788	947	841	18.8
Kerry	550	280	270	15.0
Limerick City	243	126	117	15.5
Limerick County	516	280	236	15.8
North Tipperary	294	144	150	16.9
South Tipperary	362	199	163	16.5
Waterford City	218	117	101	18.1
Waterford County	259	134	125	15.8
CONNACHT	2,080	1,052	1,028	15.7
Galway City	289	138	151	15.2
Galway County	727	389	338	17.4
Leitrim	124	64	60	16.3
Mayo	438	228	210	13.5
Roscommon	248	114	134	16.0
Sligo	254	119	135	15.9
ULSTER (PART OF)	1,057	515	542	15.0
Cavan	287	140	147	17.1
Donegal	585	282	303	15.1
Monaghan	185	93	92	12.6
REGIONAL AUTHORITIES:				
Border	1,944	961	983	15.7
Midland	1,316	653	663	19.6
West	1,702	869	833	15.8
Dublin	5,456	2,857	2,599	17.8
Mid-East	2,523	1,287	1,236	19.5
Mid-West	1,562	815	747	16.7
South-East	2,033	1,055	978	16.5
South-West	2,753	1,450	1,303	16.9

¹ Births per year per 1,000 population. Annual rates based on estimated 2009 population.

Table 4 Births registered, classified by age of mother and previous number of liveborn children, July - September 2009

Age of mother at maternity	Previous number of liveborn children							
	Total	0	1	2	3	4	5 or more	Not stated
All ages	19,289	8,170	6,100	3,194	1,172	320	232	101
15 and under	7	7	-	-	-	-	-	-
16	46	45	1	-	-	-	-	-
17	98	89	9	-	-	-	-	-
18	153	140	13	-	-	-	-	-
19	251	227	22	1	1	-	-	-
Under 20	555	508	45	1	1	-	-	-
20	357	271	70	13	2	-	-	1
21	393	269	108	14	-	1	-	1
22	466	313	114	32	6	-	-	1
23	540	329	161	38	10	1	-	1
24	576	311	187	58	15	2	-	3
20-24	2,332	1,493	640	155	33	4	-	7
25	700	400	188	81	20	7	-	4
26	795	441	230	85	27	4	3	5
27	916	471	278	103	37	14	8	5
28	1,034	514	311	124	54	12	14	5
29	1,200	591	361	164	51	19	7	7
25-29	4,645	2,417	1,368	557	189	56	32	26
30	1,287	604	426	161	72	13	8	3
31	1,308	565	463	189	54	23	9	5
32	1,319	553	453	206	64	21	16	6
33	1,353	461	518	252	77	17	18	10
34	1,277	356	480	295	100	24	16	6
30-34	6,544	2,539	2,340	1,103	367	98	67	30
35	1,180	326	424	293	94	27	9	7
36	1,048	263	380	272	93	16	17	7
37	898	203	276	256	117	22	21	3
38	705	155	193	214	96	27	16	4
39	503	99	164	144	66	17	8	5
35-39	4,334	1,046	1,437	1,179	466	109	71	26
40	384	65	113	102	54	23	20	7
41	215	41	66	42	30	15	19	2
42	136	29	48	28	15	6	9	1
43	68	11	21	14	11	5	6	-
44	33	8	10	5	3	-	6	1
40-44	836	154	258	191	113	49	60	11
45 and over	37	12	9	7	3	3	2	1
Age not stated	6	1	3	1	-	1	-	-

Table 5 Number and percentage of births registered within and outside marriage, classified by age of mother, July - September 2009

Age of mother at maternity	Total	Married parents	Unmarried Parents		% to married parents	% to unmarried parents	
			Total	Same address		Total	Same address
	Number				Percentage		
All ages	19,289	13,033	6,256	3,356	68	32	17
15 and under	7	-	7	-	-	100	-
16	46	1	45	6	2	98	13
17	98	5	93	16	5	95	16
18	153	12	141	29	8	92	19
19	251	23	228	64	9	91	25
Under 20	555	41	514	115	7	93	21
20	357	49	308	96	14	86	27
21	393	71	322	106	18	82	27
22	466	100	366	165	21	79	35
23	540	139	401	183	26	74	34
24	576	201	375	204	35	65	35
20-24	2,332	560	1,772	754	24	76	32
25	700	277	423	241	40	60	34
26	795	388	407	232	49	51	29
27	916	522	394	254	57	43	28
28	1,034	678	356	222	66	34	21
29	1,200	831	369	229	69	31	19
25-29	4,645	2,696	1,949	1,178	58	42	25
30	1,287	978	309	197	76	24	15
31	1,308	1,039	269	182	79	21	14
32	1,319	1,081	238	167	82	18	13
33	1,353	1,141	212	144	84	16	11
34	1,277	1,084	193	128	85	15	10
30-34	6,544	5,323	1,221	818	81	19	13
35	1,180	983	197	112	83	17	9
36	1,048	914	134	87	87	13	8
37	898	762	136	79	85	15	9
38	705	603	102	69	86	14	10
39	503	430	73	50	85	15	10
35-39	4,334	3,692	642	397	85	15	9
40	384	332	52	35	86	14	9
41	215	169	46	27	79	21	13
42	136	109	27	16	80	20	12
43	68	54	14	8	79	21	12
44	33	26	7	5	79	21	15
40-44	836	690	146	91	83	17	11
45 and over	37	28	9	3	76	24	8
Age not stated	6	3	3	-	50	50	-

Table 6 Number and percentage of births registered within and outside marriage, classified by area of residence of mother, July - September 2009

Area of residence	Total	Married parents	Unmarried Parents		% to married parents	% to unmarried parents	
			Total	Same address		Total	Same address
	Number				Percentage		
STATE	19,289	13,033	6,256	3,356	68	32	17
LEINSTER	10,998	7,244	3,754	1,882	66	34	17
Carlow	246	144	102	62	59	41	25
Dublin City	2,065	1,212	853	319	59	41	15
South Dublin	1,192	721	471	199	60	40	17
Fingal	1,452	1,013	439	238	70	30	16
Dun Laoghaire Rathdown	747	569	178	87	76	24	12
Kildare	1,005	686	319	195	68	32	19
Kilkenny	351	260	91	52	74	26	15
Laois	385	254	131	81	66	34	21
Longford	193	132	61	29	68	32	15
Louth	509	316	193	94	62	38	18
Meath	896	665	231	138	74	26	15
Offaly	335	222	113	75	66	34	22
Westmeath	403	264	139	81	66	34	20
Wexford	597	371	226	121	62	38	20
Wicklow	622	415	207	111	67	33	18
MUNSTER	5,154	3,559	1,595	955	69	31	19
Clare	509	374	135	93	73	27	18
Cork City	415	220	195	101	53	47	24
Cork County	1,788	1,351	437	284	76	24	16
Kerry	550	403	147	77	73	27	14
Limerick City	243	131	112	58	54	46	24
Limerick County	516	372	144	104	72	28	20
North Tipperary	294	188	106	67	64	36	23
South Tipperary	362	215	147	81	59	41	22
Waterford City	218	127	91	44	58	42	20
Waterford County	259	178	81	46	69	31	18
CONNACHT	2,080	1,522	558	358	73	27	17
Galway City	289	181	108	75	63	37	26
Galway County	727	564	163	111	78	22	15
Leitrim	124	99	25	19	80	20	15
Mayo	438	329	109	60	75	25	14
Roscommon	248	186	62	37	75	25	15
Sligo	254	163	91	56	64	36	22
ULSTER (PART OF)	1,057	708	349	161	67	33	15
Cavan	287	195	92	59	68	32	21
Donegal	585	385	200	76	66	34	13
Monaghan	185	128	57	26	69	31	14
REGIONAL AUTHORITIES:							
Border	1,944	1,286	658	330	66	34	17
Midland	1,316	872	444	266	66	34	20
West	1,702	1,260	442	283	74	26	17
Dublin	5,456	3,515	1,941	843	64	36	15
Mid-East	2,523	1,766	757	444	70	30	18
Mid-West	1,562	1,065	497	322	68	32	21
South-East	2,033	1,295	738	406	64	36	20
South-West	2,753	1,974	779	462	72	28	17

Table 7 Births registered, classified by area of residence and age of mother, July - September 2009

Area of residence	Total	Under 20	20-24	25-29	30-34	35-39	40 and over	Age not stated	Average age of mother at maternity	
									Total	First
STATE	19,289	555	2,332	4,645	6,544	4,334	873	6	31.2	29.1
LEINSTER	10,998	332	1,414	2,603	3,711	2,443	489	6	31.1	29.1
Carlow	246	3	34	69	75	55	10	-	31.0	29.2
Dublin City	2,065	92	305	502	651	418	96	1	30.6	28.8
South Dublin	1,192	46	197	330	363	220	33	3	30.1	28.1
Fingal	1,452	22	167	337	518	344	63	1	31.6	29.5
Dun Laoghaire Rathdown	747	13	60	111	272	240	50	1	33.0	31.0
Kildare	1,005	24	107	219	361	249	45	-	31.7	29.7
Kilkenny	351	9	34	71	146	73	18	-	31.7	29.3
Laois	385	13	44	108	127	79	14	-	30.8	29.3
Longford	193	5	36	49	54	31	18	-	30.8	27.2
Louth	509	20	67	131	157	119	15	-	30.8	27.9
Meath	896	21	83	193	333	220	46	-	31.9	29.3
Offaly	335	10	57	92	102	60	14	-	30.3	28.3
Westmeath	403	17	56	100	123	89	18	-	30.8	28.8
Wexford	597	21	96	141	197	121	21	-	30.5	28.2
Wicklow	622	16	71	150	232	125	28	-	31.3	29.4
MUNSTER	5,154	138	574	1,268	1,768	1,168	238	-	31.3	29.3
Clare	509	11	55	109	186	118	30	-	31.7	29.8
Cork City	415	16	65	132	108	78	16	-	30.0	28.2
Cork County	1,788	35	151	386	656	465	95	-	32.1	30.0
Kerry	550	17	51	140	182	135	25	-	31.6	29.4
Limerick City	243	13	41	72	78	35	4	-	29.5	27.7
Limerick County	516	8	53	137	189	106	23	-	31.4	29.5
North Tipperary	294	16	32	73	95	64	14	-	31.0	29.2
South Tipperary	362	13	62	90	110	69	18	-	30.5	27.7
Waterford City	218	4	37	64	70	40	3	-	30.0	28.4
Waterford County	259	5	27	65	94	58	10	-	31.3	29.5
CONNACHT	2,080	53	210	491	724	501	101	-	31.6	29.3
Galway City	289	14	39	83	98	43	12	-	30.2	28.5
Galway County	727	16	56	158	242	212	43	-	32.3	30.3
Leitrim	124	1	10	36	47	25	5	-	31.6	29.8
Mayo	438	10	44	103	153	107	21	-	31.7	29.1
Roscommon	248	3	27	51	98	58	11	-	31.9	29.6
Sligo	254	9	34	60	86	56	9	-	30.9	27.7
ULSTER (PART OF)	1,057	32	134	283	341	222	45	-	30.8	27.9
Cavan	287	7	31	77	97	67	8	-	31.0	28.6
Donegal	585	20	78	158	185	112	32	-	30.8	27.6
Monaghan	185	5	25	48	59	43	5	-	30.8	27.9
REGIONAL AUTHORITIES:										
Border	1,944	62	245	510	631	422	74	-	30.9	28.0
Midland	1,316	45	193	349	406	259	64	-	30.7	28.6
West	1,702	43	166	395	591	420	87	-	31.7	29.5
Dublin	5,456	173	729	1,280	1,804	1,222	242	6	31.1	29.1
Mid-East	2,523	61	261	562	926	594	119	-	31.7	29.5
Mid-West	1,562	48	181	391	548	323	71	-	31.1	29.2
South-East	2,033	55	290	500	692	416	80	-	30.8	28.6
South-West	2,753	68	267	658	946	678	136	-	31.7	29.6

Table 8 Births registered outside marriage, classified by area of residence and age of mother, July - September 2009

Area of residence	Total	Under 25	25-29	30-34	35-39	40 and over	Age not stated	Average age of mother at maternity	
								Total	First
STATE	6,256	2,286	1,949	1,221	642	155	3	27.6	26.0
LEINSTER	3,754	1,371	1,133	731	411	105	3	27.7	26.1
Carlow	102	29	38	22	9	4	-	28.1	26.7
Dublin City	853	318	233	172	107	22	1	27.8	26.2
South Dublin	471	190	151	78	38	12	2	26.9	24.9
Fingal	439	132	139	100	62	6	-	28.5	27.1
Dun Laoghaire Rathdown	178	61	40	46	24	7	-	28.9	27.7
Kildare	319	109	94	64	41	11	-	28.2	26.8
Kilkenny	91	35	19	25	6	6	-	28.2	25.4
Laois	131	47	45	24	12	3	-	27.4	26.2
Longford	61	25	24	10	1	1	-	26.1	24.3
Louth	193	78	52	34	25	4	-	27.5	25.2
Meath	231	75	82	41	22	11	-	28.0	25.7
Offaly	113	54	33	18	7	1	-	26.3	25.3
Westmeath	139	53	44	24	9	9	-	27.7	25.9
Wexford	226	91	61	42	28	4	-	27.5	25.8
Wicklow	207	74	78	31	20	4	-	27.5	25.7
MUNSTER	1,595	589	529	303	145	29	-	27.4	25.9
Clare	135	53	42	25	9	6	-	27.3	26.3
Cork City	195	70	62	41	21	1	-	27.6	26.0
Cork County	437	155	137	89	48	8	-	27.7	26.2
Kerry	147	50	50	20	21	6	-	28.0	25.7
Limerick City	112	46	38	22	6	-	-	26.4	24.9
Limerick County	144	51	56	27	9	1	-	27.0	26.0
North Tipperary	106	42	37	18	7	2	-	26.8	25.4
South Tipperary	147	65	46	25	7	4	-	26.7	25.3
Waterford City	91	30	32	19	9	1	-	27.9	26.5
Waterford County	81	27	29	17	8	-	-	27.6	25.7
CONNACHT	558	192	178	121	57	10	-	27.7	26.1
Galway City	108	36	38	21	11	2	-	27.6	26.0
Galway County	163	49	51	37	21	5	-	28.3	26.9
Leitrim	25	7	10	4	3	1	-	28.6	27.6
Mayo	109	41	37	19	10	2	-	27.5	25.8
Roscommon	62	21	18	18	5	-	-	28.0	25.8
Sligo	91	38	24	22	7	-	-	26.9	25.3
ULSTER (PART OF)	349	134	109	66	29	11	-	27.3	24.9
Cavan	92	29	35	19	9	-	-	27.6	26.2
Donegal	200	84	56	36	15	9	-	27.2	24.5
Monaghan	57	21	18	11	5	2	-	27.3	24.2
REGIONAL AUTHORITIES:									
Border	658	257	195	126	64	16	-	27.3	25.2
Midland	444	179	146	76	29	14	-	27.0	25.6
West	442	147	144	95	47	9	-	27.9	26.2
Dublin	1,941	701	563	396	231	47	3	27.8	26.3
Mid-East	757	258	254	136	83	26	-	28.0	26.2
Mid-West	497	192	173	92	31	9	-	26.9	25.7
South-East	738	277	225	150	67	19	-	27.6	25.9
South-West	779	275	249	150	90	15	-	27.7	26.1

Table 9 Deaths registered by county of residence of deceased, July - September 2009

Area of residence	Total	Male	Female	Rate ¹
STATE	6,638	3,505	3,133	6.0
LEINSTER	3,317	1,704	1,613	5.5
Carlow	78	39	39	5.9
Dublin City	972	516	456	7.3
South Dublin	242	134	108	3.7
Fingal	202	105	97	3.2
Dun Laoghaire Rathdown	291	142	149	5.7
Kildare	210	103	107	4.3
Kilkenny	137	62	75	6.0
Laois	99	55	44	5.6
Longford	91	37	54	10.1
Louth	183	90	93	6.3
Meath	185	101	84	4.3
Offaly	110	49	61	5.9
Westmeath	118	60	58	5.7
Wexford	225	112	113	6.5
Wicklow	174	99	75	5.2
MUNSTER	1,995	1,068	927	6.5
Clare	206	109	97	7.1
Cork City	237	112	125	7.5
Cork County	457	274	183	4.8
Kerry	288	153	135	7.8
Limerick City	113	66	47	7.2
Limerick County	221	114	107	6.8
North Tipperary	158	79	79	9.1
South Tipperary	138	72	66	6.3
Waterford City	65	35	30	5.4
Waterford County	112	54	58	6.8
CONNACHT	881	497	384	6.6
Galway City	58	32	26	3.0
Galway County	290	162	128	6.9
Leitrim	69	36	33	9.1
Mayo	246	144	102	7.6
Roscommon	108	67	41	7.0
Sligo	110	56	54	6.9
ULSTER (PART OF)	445	236	209	6.3
Cavan	92	53	39	5.5
Donegal	266	140	126	6.9
Monaghan	87	43	44	5.9
REGIONAL AUTHORITIES:				
Border	807	418	389	6.5
Midland	418	201	217	6.2
West	702	405	297	6.5
Dublin	1,707	897	810	5.6
Mid-East	569	303	266	4.4
Mid-West	698	368	330	7.4
South-East	755	374	381	6.1
South-West	982	539	443	6.0

¹ Deaths per year per 1,000 population. Annual rates based on estimated 2009 population.

**Table 10 Deaths registered by cause of death and county of residence of deceased,
July - September 2009**

Area of residence	Total deaths	Malignant Neoplasms	Diseases of the Circulatory system	Diseases of the Respiratory system	External causes	All other causes
STATE	6,638	1,991	2,303	682	468	1,194
LEINSTER	3,317	1,004	1,077	362	266	608
Carlow	78	22	30	4	9	13
Dublin City	972	287	322	122	86	155
South Dublin	242	71	75	17	36	43
Fingal	202	67	61	16	26	32
Dun Laoghaire Rathdown	291	105	88	25	21	52
Kildare	210	72	61	23	11	43
Kilkenny	137	49	43	16	7	22
Laois	99	29	36	15	3	16
Longford	91	28	29	11	3	20
Louth	183	51	56	18	15	43
Meath	185	48	71	20	7	39
Offaly	110	35	36	13	4	22
Westmeath	118	23	50	15	10	20
Wexford	225	75	58	27	17	48
Wicklow	174	42	61	20	11	40
MUNSTER	1,995	597	739	186	136	337
Clare	206	52	88	25	10	31
Cork City	237	68	83	25	19	42
Cork County	457	152	145	36	47	77
Kerry	288	75	118	30	18	47
Limerick City	113	26	46	14	8	19
Limerick County	221	70	85	21	7	38
North Tipperary	158	47	70	6	5	30
South Tipperary	138	42	48	10	10	28
Waterford City	65	18	24	6	4	13
Waterford County	112	47	32	13	8	12
CONNACHT	881	267	325	87	44	158
Galway City	58	15	17	7	8	11
Galway County	290	88	106	28	17	51
Leitrim	69	24	22	10	1	12
Mayo	246	68	96	21	10	51
Roscommon	108	35	43	13	1	16
Sligo	110	37	41	8	7	17
ULSTER (PART OF)	445	123	162	47	22	91
Cavan	92	15	34	12	4	27
Donegal	266	91	94	25	12	44
Monaghan	87	17	34	10	6	20
REGIONAL AUTHORITIES:						
Border	807	235	281	83	45	163
Midland	418	115	151	54	20	78
West	702	206	262	69	36	129
Dublin	1,707	530	546	180	169	282
Mid-East	569	162	193	63	29	122
Mid-West	698	195	289	66	30	118
South-East	755	253	235	76	55	136
South-West	982	295	346	91	84	166

Table 11 Deaths registered classified by cause and age group, July - September 2009

Cause of Death	65 COD Code	ICD-10 Code	Total Deaths	Age Group										
				Under 1	1-4	5-14	15-24	25-34	35-44	45-54	55-64	65-74	75-84	85 and over
Total deaths	0	A00-Y89	6,638	80	16	9	85	138	203	367	701	1,150	2,019	1,870
Infectious and parasitic diseases:-	1	A00-B99	58	0	1	0	1	3	3	7	5	5	17	16
Tuberculosis	2	A15-A19,B90	13	0	0	0	0	1	0	0	2	1	4	5
Meningococcal infection	3	A39	2	0	1	0	0	0	0	0	0	0	1	0
AIDS (HIV Disease)	4	B20-B24	4	0	0	0	0	1	1	2	0	0	0	0
Viral Hepatitis	5	B15-B19	3	0	0	0	0	0	0	2	1	0	0	0
Other infectious and parasitic diseases			36	0	0	0	1	1	2	3	2	4	12	11
Neoplasms	6	C00-D48	2,047	0	3	5	4	17	43	151	337	494	662	331
Malignant Neoplasms of the:-	7	C00-C97	1,991	0	2	4	4	16	43	150	331	486	637	318
Lip, oral cavity, pharynx	8	C00-C14	25	0	0	0	0	0	1	2	5	7	5	5
Oesophagus	9	C15	80	0	0	0	0	0	1	5	17	15	28	14
Stomach	10	C16	99	0	0	0	1	1	3	7	17	20	29	21
Colon	11	C18	121	0	0	0	0	1	0	8	17	27	39	29
Rectum and anus	12	C19-C21	84	0	0	0	0	2	3	14	5	21	27	12
Liver and the intrahepatic bile ducts	13	C22	54	0	0	0	0	0	0	6	12	14	16	6
Pancreas	14	C25	107	0	0	0	0	0	0	2	16	36	36	17
Larynx and trachea/bronchus /lung	15	C32-C34	415	0	0	1	0	1	7	31	82	118	136	39
Skin	16	C43	29	0	0	0	1	0	1	3	4	6	7	7
Breast	17	C50	172	0	0	0	0	1	10	26	39	32	46	18
Cervix uteri	18	C53	27	0	0	0	0	1	2	3	9	6	4	2
Other parts of uterus	19	C54-C55	32	0	0	0	0	0	0	3	6	10	6	7
Ovary	20	C56	58	0	0	0	0	1	1	5	17	13	14	7
Prostate	21	C61	151	0	0	0	0	0	0	1	9	34	72	35
Kidney	22	C64	52	0	0	0	1	0	2	6	9	12	20	2
Bladder	23	C67	56	0	0	0	0	0	0	0	4	14	23	15
Lymph/haematopoietic tissue	24	C81-C96	147	0	1	0	1	3	3	11	18	33	43	34
Other malignant neoplasms			282	0	1	3	0	5	9	17	45	68	86	48
Diseases of the blood and blood-forming organs, immunological disorders	25	D50-D89	17	0	0	0	1	0	1	2	1	3	5	4
Endocrine, Nutritional and metabolic diseases	26	E00-E90	157	0	0	0	1	5	2	3	11	21	54	60
Diabetes mellitus	27	E10-E14	122	0	0	0	0	3	1	3	8	15	43	49
Mental and behavioural disorders	28	F00-F99	111	0	0	0	0	0	0	0	1	8	32	70
Diseases of the nervous system and the sense organs	31	G00-H95	216	1	0	0	5	5	9	6	21	33	68	68
Meningitis	32	G00-G03	1	0	0	0	0	0	0	0	1	0	0	0
Diseases of the Circulatory System:-	33	I00-I99	2,303	0	0	0	4	15	31	83	183	372	763	852
Ischaemic heart disease	34	I20-I25	1,218	0	0	0	0	4	16	51	116	227	411	393
of which: (Acute myocardial infarction)		I21	599	0	0	0	0	3	8	19	49	93	219	208
Other heart disease	35	I30-I33,I39-I52	297	0	0	0	3	6	8	8	19	33	67	153
Cerebrovascular disease	36	I60-I69	500	0	0	0	1	3	6	11	24	72	171	212
Other diseases of circulatory system			288	0	0	0	0	2	1	13	24	40	114	94

Diseases of the Respiratory system	37	J00-J99	682	0	0	0	1	2	2	13	36	96	250	282
Influenza	38	J10-J11	0	0	0	0	0	0	0	0	0	0	0	0
Pneumonia	39	J12-J19	247	0	0	0	0	2	2	5	8	28	66	136
Chronic Lower respiratory disease	40	J40-J47	282	0	0	0	1	0	0	3	18	48	113	99
of which: Asthma	41	J45-J46	13	0	0	0	1	0	0	0	2	2	3	5
Other diseases of the respiratory system			153	0	0	0	0	0	0	5	10	20	71	47
Diseases of the Digestive system	42	K00-K93	276	0	0	0	0	1	22	29	36	56	68	64
Ulcer of stomach, duodenum and jejunum	43	K25-K28	20	0	0	0	0	0	0	2	4	2	6	6
Chronic liver disease	44	K70,K73-K74	71	0	0	0	0	1	13	17	16	16	6	2
Other diseases of the digestive system			185	0	0	0	0	0	9	10	16	38	56	56
Diseases of the skin and subcutaneous tissue	45	L00-L99	17	0	0	0	0	0	0	0	2	2	5	8
Diseases of the musculoskeletal system/connective tissue	46	M00-M99	44	0	0	0	1	1	2	2	1	6	13	18
Rheumatoid arthritis and osteoarthritis	47	M05-M06,M15-M19	11	0	0	0	0	0	0	2	0	2	3	4
Diseases of the genitourinary system	48	N00-N99	128	0	0	0	0	0	1	0	7	11	41	68
Diseases of the kidney and ureter	49	N00-N29	92	0	0	0	0	0	1	0	6	10	31	44
Complications of pregnancy, childbirth and puerperium	50	O00-O99	1	0	0	0	0	1	0	0	0	0	0	0
Certain conditions originating in the perinatal period¹	51	P00-P96	37	36	1	0	0	0	0	0	0	0	0	0
Congenital malformations and chromosomal abnormalities	52	Q00-Q99	58	33	5	1	5	4	2	4	2	2	0	0
Congenital malformations of the:-														
Nervous system	53	Q00-Q07	13	8	3	0	0	1	0	1	0	0	0	0
Circulatory system	54	Q20-Q28	19	9	0	1	5	1	2	0	1	0	0	0
Symptoms, signs, abnormal findings, ill-defined causes	55	R00-R99	20	10	1	0	0	0	2	1	2	0	2	2
Sudden infant death syndrome	56	R95	10	10	0	0	0	0	0	0	0	0	0	0
Unknown and unspecified causes	57	R96-R99	7	0	1	0	0	0	2	1	1	0	2	0
External causes of injury and poisoning	58	V01-Y89	468	0	7	3	62	84	83	66	56	41	39	27
Accidents	59	V01-X59	270	0	6	2	27	33	42	40	34	28	31	27
of which: Transport accidents	60	V01-V99	68	0	4	2	20	13	9	6	4	5	5	0
Accidental falls	61	W00-W19	70	0	0	0	0	2	3	7	9	12	18	19
Accidental poisoning	62	X40-X49	84	0	0	0	6	16	21	21	15	3	2	0
other accidents			48	0	2	0	1	2	9	6	6	8	6	8
Suicide and intentional self harm	63	X60-X84	126	0	0	1	26	31	30	16	14	7	1	0
Homicide/assault	64	X85-Y09	19	0	0	0	4	8	3	2	0	1	1	0
Events of undetermined intent	65	Y10-Y34	43	0	0	0	5	12	8	8	4	3	3	0
All other external causes			10	0	1	0	0	0	0	0	4	2	3	0

¹ Stillbirths not included.

Table 12 Male deaths registered classified by cause and age group, July - September 2009

Cause of Death	65 COD Code	ICD-10 Code	Total Males	Age Group										
				Under 1	1-4	5-14	15-24	25-34	35-44	45-54	55-64	65-74	75-84	85 and over
Total Male Deaths	0	A00-Y89	3,505	44	8	4	61	106	149	232	437	709	1,078	677
Infectious and parasitic diseases:-	1	A00-B99	30	0	1	0	0	1	0	6	2	3	9	8
Tuberculosis	2	A15-A19,B90	8	0	0	0	0	0	0	0	1	1	3	3
Meningococcal infection	3	A39	1	0	1	0	0	0	0	0	0	0	0	0
AIDS (HIV Disease)	4	B20-B24	2	0	0	0	0	0	0	2	0	0	0	0
Viral Hepatitis	5	B15-B19	3	0	0	0	0	0	0	2	1	0	0	0
Other infectious and parasitic diseases			16	0	0	0	0	1	0	2	0	2	6	5
Neoplasms	6	C00-D48	1,131	0	1	2	3	11	19	84	179	301	375	156
Malignant Neoplasms of the:-	7	C00-C97	1,102	0	1	2	3	10	19	83	175	297	363	149
Lip, oral cavity, pharynx	8	C00-C14	19	0	0	0	0	0	1	2	4	5	4	3
Oesophagus	9	C15	51	0	0	0	0	0	1	3	10	12	16	9
Stomach	10	C16	69	0	0	0	1	0	2	6	12	16	21	11
Colon	11	C18	63	0	0	0	0	1	0	6	10	16	21	9
Rectum and anus	12	C19-C21	59	0	0	0	0	1	2	11	3	16	18	8
Liver and the intrahepatic bile ducts	13	C22	26	0	0	0	0	0	0	4	9	6	7	0
Pancreas	14	C25	56	0	0	0	0	0	0	2	12	18	16	8
Larynx and trachea/bronchus /lung	15	C32-C34	255	0	0	0	0	1	3	24	49	83	76	19
Skin	16	C43	17	0	0	0	0	0	0	3	3	4	2	5
Breast	17	C50	1	0	0	0	0	0	0	0	0	0	0	1
Cervix uteri	18	C53	0	0	0	0	0	0	0	0	0	0	0	0
Other parts of uterus	19	C54-C55	0	0	0	0	0	0	0	0	0	0	0	0
Ovary	20	C56	0	0	0	0	0	0	0	0	0	0	0	0
Prostate	21	C61	151	0	0	0	0	0	0	1	9	34	72	35
Kidney	22	C64	39	0	0	0	1	0	1	5	8	9	14	1
Bladder	23	C67	40	0	0	0	0	0	0	0	3	12	15	10
Lymph/haematopoietic tissue	24	C81-C96	84	0	0	0	1	3	3	6	10	23	27	11
Other malignant neoplasms			172	0	1	2	0	4	6	10	33	43	54	19
Diseases of the blood and blood-forming organs, immunological disorders	25	D50-D89	8	0	0	0	1	0	0	2	0	2	3	0
Endocrine, Nutritional and metabolic diseases	26	E00-E90	72	0	0	0	0	2	1	3	7	12	28	19
Diabetes mellitus	27	E10-E14	58	0	0	0	0	2	0	3	5	9	24	15
Mental and behavioural disorders	28	F00-F99	44	0	0	0	0	0	0	0	1	4	13	26
Diseases of the nervous system and the sense organs	31	G00-H95	101	1	0	0	2	3	6	2	14	17	34	22
Meningitis	32	G00-G03	1	0	0	0	0	0	0	0	1	0	0	0
Diseases of the Circulatory System:-	33	I00-I99	1,167	0	0	0	3	9	24	66	132	254	394	285
Ischaemic heart disease	34	I20-I25	702	0	0	0	0	1	13	40	98	164	233	153
of which: (Acute myocardial infarction)		I21	326	0	0	0	0	1	5	13	38	63	120	86
Other heart disease	35	I30-I33,I39-I52	132	0	0	0	2	4	6	7	12	21	35	45
Cerebrovascular disease	36	I60-I69	189	0	0	0	1	2	4	9	8	41	69	55
Other diseases of circulatory system			144	0	0	0	0	2	1	10	14	28	57	32

Diseases of the Respiratory system	37	J00-J99	343	0	0	0	0	2	2	6	27	55	139	112
Influenza	38	J10-J11	0	0	0	0	0	0	0	0	0	0	0	0
Pneumonia	39	J12-J19	114	0	0	0	0	2	2	2	8	18	33	49
Chronic Lower respiratory disease of which: Asthma	40 41	J40-J47 J45-J46	137 4	0 0	0 0	0 0	0 0	0 0	0 0	0 0	13 1	24 1	57 1	43 1
Other diseases of the respiratory system			92	0	0	0	0	0	0	4	6	13	49	20
Diseases of the Digestive system	42	K00-K93	137	0	0	0	0	1	20	14	27	29	31	15
Ulcer of stomach, duodenum and jejunum	43	K25-K28	10	0	0	0	0	0	0	1	4	0	1	4
Chronic liver disease	44	K70,K73-K74	50	0	0	0	0	1	11	10	13	11	3	1
Other diseases of the digestive system			77	0	0	0	0	0	9	3	10	18	27	10
Diseases of the skin and subcutaneous tissue	45	L00-L99	9	0	0	0	0	0	0	0	1	1	3	4
Diseases of the musculoskeletal system/connective tissue	46	M00-M99	14	0	0	0	1	0	1	0	1	2	2	7
Rheumatoid arthritis and osteoarthritis	47	M05-M06,M15-M19	2	0	0	0	0	0	0	0	0	0	0	2
Diseases of the genitourinary system	48	N00-N99	48	0	0	0	0	0	1	0	2	8	21	16
Diseases of the kidney and ureter	49	N00-N29	39	0	0	0	0	0	1	0	2	8	15	13
Complications of pregnancy, childbirth and puerperium	50	O00-O99	0	0	0	0	0	0	0	0	0	0	0	0
Certain conditions originating in the perinatal period¹	51	P00-P96	22	22	0	0	0	0	0	0	0	0	0	0
Congenital malformations and chromosomal abnormalities	52	Q00-Q99	29	17	2	1	3	3	1	2	0	0	0	0
Congenital malformations of the:-														
Nervous system	53	Q00-Q07	6	4	1	0	0	1	0	0	0	0	0	0
Circulatory system	54	Q20-Q28	10	5	0	1	3	0	1	0	0	0	0	0
Symptoms, signs, abnormal findings, ill-defined causes	55	R00-R99	11	4	0	0	0	0	2	1	1	0	1	2
Sudden infant death syndrome	56	R95	4	4	0	0	0	0	0	0	0	0	0	0
Unknown and unspecified causes	57	R96-R99	4	0	0	0	0	0	2	1	0	0	1	0
External causes of injury and poisoning	58	V01-Y89	339	0	4	1	48	74	72	46	43	21	25	5
Accidents	59	V01-X59	184	0	4	1	23	31	35	27	25	13	20	5
of which: Transport accidents	60	V01-V99	52	0	2	1	17	12	7	3	4	3	3	0
Accidental falls	61	W00-W19	35	0	0	0	0	2	3	7	4	5	10	4
Accidental poisoning	62	X40-X49	67	0	0	0	5	15	19	13	12	2	1	0
other accidents			30	0	2	0	1	2	6	4	5	3	6	1
Suicide and intentional self harm	63	X60-X84	101	0	0	0	17	26	28	12	12	5	1	0
Homicide/assault	64	X85-Y09	18	0	0	0	4	7	3	2	0	1	1	0
Events of undetermined intent	65	Y10-Y34	32	0	0	0	4	10	6	5	4	1	2	0
All other external causes			4	0	0	0	0	0	0	0	2	1	1	0

¹ Stillbirths not included.

Table 13 Female deaths registered classified by cause and age group, July - September 2009

Cause of Death	65 COD Code	ICD-10 Code	Total Females	Age Group										
				Under 1	1-4	5-14	15-24	25-34	35-44	45-54	55-64	65-74	75-84	85 and over
Total Female Deaths	0	A00-Y89	3,133	36	8	5	24	32	54	135	264	441	941	1,193
Infectious and parasitic diseases:-	1	A00-B99	28	0	0	0	1	2	3	1	3	2	8	8
Tuberculosis	2	A15-A19,B90	5	0	0	0	0	1	0	0	1	0	1	2
Meningococcal infection	3	A39	1	0	0	0	0	0	0	0	0	0	1	0
AIDS (HIV Disease)	4	B20-B24	2	0	0	0	0	1	1	0	0	0	0	0
Viral Hepatitis	5	B15-B19	0	0	0	0	0	0	0	0	0	0	0	0
Other infectious and parasitic diseases			20	0	0	0	1	0	2	1	2	2	6	6
Neoplasms	6	C00-D48	916	0	2	3	1	6	24	67	158	193	287	175
Malignant Neoplasms of the:-	7	C00-C97	889	0	1	2	1	6	24	67	156	189	274	169
Lip, oral cavity, pharynx	8	C00-C14	6	0	0	0	0	0	0	0	1	2	1	2
Oesophagus	9	C15	29	0	0	0	0	0	0	2	7	3	12	5
Stomach	10	C16	30	0	0	0	0	1	1	1	5	4	8	10
Colon	11	C18	58	0	0	0	0	0	0	2	7	11	18	20
Rectum and anus	12	C19-C21	25	0	0	0	0	1	1	3	2	5	9	4
Liver and the intrahepatic bile ducts	13	C22	28	0	0	0	0	0	0	2	3	8	9	6
Pancreas	14	C25	51	0	0	0	0	0	0	0	4	18	20	9
Larynx and trachea/bronchus /lung	15	C32-C34	160	0	0	1	0	0	4	7	33	35	60	20
Skin	16	C43	12	0	0	0	1	0	1	0	1	2	5	2
Breast	17	C50	171	0	0	0	0	1	10	26	39	32	46	17
Cervix uteri	18	C53	27	0	0	0	0	1	2	3	9	6	4	2
Other parts of uterus	19	C54-C55	32	0	0	0	0	0	0	3	6	10	6	7
Ovary	20	C56	58	0	0	0	0	1	1	5	17	13	14	7
Prostate	21	C61	0	0	0	0	0	0	0	0	0	0	0	0
Kidney	22	C64	13	0	0	0	0	0	1	1	1	3	6	1
Bladder	23	C67	16	0	0	0	0	0	0	0	1	2	8	5
Lymph/haematopoietic tissue	24	C81-C96	63	0	1	0	0	0	0	5	8	10	16	23
Other malignant neoplasms			110	0	0	1	0	1	3	7	12	25	32	29
Diseases of the blood and blood-forming organs, immunological disorders	25	D50-D89	9	0	0	0	0	0	1	0	1	1	2	4
Endocrine, Nutritional and metabolic diseases	26	E00-E90	85	0	0	0	1	3	1	0	4	9	26	41
Diabetes mellitus	27	E10-E14	64	0	0	0	0	1	1	0	3	6	19	34
Mental and behavioural disorders	28	F00-F99	67	0	0	0	0	0	0	0	0	4	19	44
Diseases of the nervous system and the sense organs	31	G00-H95	115	0	0	0	3	2	3	4	7	16	34	46
Meningitis	32	G00-G03	0	0	0	0	0	0	0	0	0	0	0	0
Diseases of the Circulatory System:-	33	I00-I99	1,136	0	0	0	1	6	7	17	51	118	369	567
Ischaemic heart disease	34	I20-I25	516	0	0	0	0	3	3	11	18	63	178	240
of which: (Acute myocardial infarction)		I21	273	0	0	0	0	2	3	6	11	30	99	122
Other heart disease	35	I30-I33,I39-I52	165	0	0	0	1	2	2	1	7	12	32	108
Cerebrovascular disease	36	I60-I69	311	0	0	0	0	1	2	2	16	31	102	157
Other diseases of circulatory system			144	0	0	0	0	0	0	3	10	12	57	62

Diseases of the Respiratory system	37	J00-J99	339	0	0	0	1	0	0	7	9	41	111	170
Influenza	38	J10-J11	0	0	0	0	0	0	0	0	0	0	0	0
Pneumonia	39	J12-J19	133	0	0	0	0	0	0	3	0	10	33	87
Chronic Lower respiratory disease	40	J40-J47	145	0	0	0	1	0	0	3	5	24	56	56
of which: <i>Asthma</i>	41	J45-J46	9	0	0	0	1	0	0	0	1	1	2	4
Other diseases of the respiratory system			61	0	0	0	0	0	0	1	4	7	22	27
Diseases of the Digestive system	42	K00-K93	139	0	0	0	0	0	2	15	9	27	37	49
Ulcer of stomach, duodenum and jejunum	43	K25-K28	10	0	0	0	0	0	0	1	0	2	5	2
Chronic liver disease	44	K70,K73-K74	21	0	0	0	0	0	2	7	3	5	3	1
Other diseases of the digestive system			108	0	0	0	0	0	0	7	6	20	29	46
Diseases of the skin and subcutaneous tissue	45	L00-L99	8	0	0	0	0	0	0	0	1	1	2	4
Diseases of the musculoskeletal system/connective tissue	46	M00-M99	30	0	0	0	0	1	1	2	0	4	11	11
Rheumatoid arthritis and osteoarthritis	47	M05-M06,M15-M19	9	0	0	0	0	0	0	2	0	2	3	2
Diseases of the genitourinary system	48	N00-N99	80	0	0	0	0	0	0	0	5	3	20	52
Diseases of the kidney and ureter	49	N00-N29	53	0	0	0	0	0	0	0	4	2	16	31
Complications of pregnancy, childbirth and puerperium	50	O00-O99	1	0	0	0	0	1	0	0	0	0	0	0
Certain conditions originating in the perinatal period¹	51	P00-P96	15	14	1	0	0	0	0	0	0	0	0	0
Congenital malformations and chromosomal abnormalities	52	Q00-Q99	27	16	1	0	2	1	1	2	2	2	0	0
Congenital malformations of the:-														
Nervous system	53	Q00-Q07	5	4	0	0	0	0	0	1	0	0	0	0
Circulatory system	54	Q20-Q28	9	4	0	0	2	1	1	0	1	0	0	0
Symptoms, signs, abnormal findings, ill-defined causes	55	R00-R99	9	6	1	0	0	0	0	0	1	0	1	0
Sudden infant death syndrome	56	R95	6	6	0	0	0	0	0	0	0	0	0	0
Unknown and unspecified causes	57	R96-R99	3	0	1	0	0	0	0	0	1	0	1	0
External causes of injury and poisoning	58	V01-Y89	129	0	3	2	14	10	11	20	13	20	14	22
Accidents	59	V01-X59	86	0	2	1	4	2	7	13	9	15	11	22
of which: <i>Transport accidents</i>	60	V01-V99	16	0	2	1	3	1	2	3	0	2	2	0
Accidental falls	61	W00-W19	35	0	0	0	0	0	0	0	5	7	8	15
Accidental poisoning	62	X40-X49	17	0	0	0	1	1	2	8	3	1	1	0
other accidents			18	0	0	0	0	0	3	2	1	5	0	7
Suicide and intentional self harm	63	X60-X84	25	0	0	1	9	5	2	4	2	2	0	0
Homicide/assault	64	X85-Y09	1	0	0	0	0	1	0	0	0	0	0	0
Events of undetermined intent	65	Y10-Y34	11	0	0	0	1	2	2	3	0	2	1	0
All other external causes			6	0	1	0	0	0	0	0	2	1	2	0

¹ Stillbirths not included.

**Table 14 Infant and neonatal mortality by area of residence of deceased,
July - September 2009**

Area of residence	Infant mortality		Neonatal mortality	
	Number	Rate	Number	Rate
STATE	80	4.1	53	2.7
LEINSTER	43	3.9	30	2.7
Carlow	1	4.1	1	4.1
Dublin City	9	4.4	8	3.9
South Dublin	5	4.2	3	2.5
Fingal	2	1.4	1	0.7
Dun Laoghaire Rathdown	3	4.0	3	4.0
Kildare	8	8.0	5	5.0
Kilkenny	0	0.0	0	0.0
Laois	1	2.6	1	2.6
Longford	1	5.2	0	0.0
Louth	4	7.9	1	2.0
Meath	2	2.2	2	2.2
Offaly	1	3.0	1	3.0
Westmeath	2	5.0	1	2.5
Wexford	3	5.0	2	3.4
Wicklow	1	1.6	1	1.6
MUNSTER	26	5.0	16	3.1
Clare	3	5.9	1	2.0
Cork City	1	2.4	1	2.4
Cork County	3	1.7	0	0.0
Kerry	6	10.9	4	7.3
Limerick City	0	0.0	0	0.0
Limerick County	5	9.7	4	7.8
North Tipperary	1	3.4	1	3.4
South Tipperary	3	8.3	3	8.3
Waterford City	2	9.2	2	9.2
Waterford County	2	7.7	0	0.0
CONNACHT	10	4.8	6	2.9
Galway City	2	6.9	2	6.9
Galway County	6	8.3	4	5.5
Leitrim	0	0.0	0	0.0
Mayo	2	4.6	0	0.0
Roscommon	0	0.0	0	0.0
Sligo	0	0.0	0	0.0
ULSTER (PART OF)	1	0.9	1	0.9
Cavan	0	0.0	0	0.0
Donegal	1	1.7	1	1.7
Monaghan	0	0.0	0	0.0
REGIONAL AUTHORITIES:				
Border	5	2.6	2	1.0
Midland	5	3.8	3	2.3
West	10	5.9	6	3.5
Dublin	19	3.5	15	2.7
Mid-East	11	4.4	8	3.2
Mid-West	9	5.8	6	3.8
South-East	11	5.4	8	3.9
South-West	10	3.6	5	1.8

Infant mortality rates: Deaths of infants under one year per 1,000 live births, classified by area of residence of mother.

Neonatal mortality rates: Deaths of infants under 28 days per 1,000 live births, classified by area of residence of mother.

Infant and neonatal mortality rates in some areas, based on small numbers are subject to considerable fluctuation and caution should be exercised in their interpretation.

Appendix

Glossary of terms

NUTS III Regional Authority areas

Border, Midland, West, Dublin, Mid-East, Mid-West, South-East, South-West

Border: Cavan, Donegal, Leitrim, Louth, Monaghan, Sligo.

Midland: Laois, Longford, Offaly, Westmeath.

West: Galway City, Galway County, Mayo, Roscommon.

Dublin: Dublin City, South Dublin, Fingal, Dun Laoghaire-Rathdown.

Mid-East: Kildare, Meath, Wicklow.

Mid-West: Clare, Limerick City, Limerick County, North Tipperary.

South-East: Carlow, Kilkenny, South Tipperary, Waterford City, Waterford County, Wexford.

South-West: Cork City, Cork County, Kerry.

Causes of death Eurostat shortlist (August 1998)

Nr	Disease or external cause	ICD-9 Code	ICD-10 Code
00	All causes of death	001-E999	A00-Y89
01	Infectious and Parasitic Diseases:-	001-139,279.8	A00-B99
02	Tuberculosis	010-018,137	A15-A19,B90
03	Meningococcal Infection	036	A39
04	AIDS (HIV Disease)	042-044,279.8	B20-B24
05	Viral Hepatitis	070	B15-B19
	other Infectious and Parasitic Diseases	Rem (001-139)	Rem (A00-B99)
06	Neoplasms	140-239	C00-D48
07	Malignant Neoplasms of the:-	140-208	C00-C97
08	Lip, Oral Cavity, Pharynx	140-149	C00-C14
09	Oesophagus	150	C15
10	Stomach	151	C16
11	Colon	153	C18
12	Rectum and Anus	154	C19-C20-C21
13	Liver and the Intrahepatic Bile Ducts	155	C22
14	Pancreas	157	C25
15	Larynx and Trachea/Bronchus/Lung	161-162	C32-C34
16	Skin	172	C43
17	Breast	174-175	C50
18	Cervix Uteri	180	C53
19	Other Parts of the Uterus	179,182	C54-C55
20	Ovary	183.0	C56
21	Prostate	185	C61
22	Kidney	189.0	C64
23	Bladder	188	C67
24	Lymph/Haematopoietic Tissue	200-208	C81-C96
	other Malignant Neoplasms	Rem (140-208)	Rem. (C00-C97)
25	Diseases of the Blood and Blood-forming Organs, Immunological disorders ¹	279-289	D50-D89
26	Endocrine, Nutritional and Metabolic Diseases	240-278	E00-E90
27	Diabetes Mellitus	250	E10-E14
28	Mental and Behavioural Disorders	290-319	F00-F99
29	Alcohol abuse (including Alcoholic Psychosis)	291,303	F10
30	Drug Dependence, Toxicomania	304-305	F11-F16,F18-F19
31	Diseases of the Nervous System and the Sense Organs	320-389	G00-H95
32	Meningitis	320-322	G00-G03
33	Diseases of the Circulatory System:-	390-459	I00-I99
34	Ischaemic Heart Disease	410-414	I20-I25
	<i>(Acute Myocardial Infarction)</i>	410	I21
35	Other Heart Disease	420-423,425-429	I30-I33,I39-I52
36	Cerebrovascular Disease	430-438	I60-I69
	other Diseases of the Circulatory System	Rem (390-459)	Rem. (I00-I99)
37	Diseases of the Respiratory System	460-519	J00-J99
38	Influenza	487	J10-J11
39	Pneumonia	480-486	J12-J18
40	Chronic Lower Respiratory Disease	490-494,496	J40-J47
41	Asthma	493	J45-J46
	other Diseases of the Respiratory System	Rem (460-519)	Rem. (J00-J99)
42	Diseases of the Digestive System	520-579	K00-K93
43	Ulcer of Stomach, Duodenum and Jejunum	531-534	K25-K28
44	Chronic Liver Disease	571.0-571.9	K70,K73-K74
	other Diseases of the Digestive System	Rem (520-579)	Rem. (K00-K93)
45	Diseases of the Skin and Subcutaneous Tissue	680-709	L00-L99
46	Diseases of the Musculoskeletal System/Connective Tissue	710-739	M00-M99
47	Rheumatoid Arthritis and Osteoarthritis	714-715	M05-M06,M15-M19
48	Diseases of the Genitourinary System	580-629	N00-N99
49	Diseases of the Kidney and Ureter	580-594	N00-N29
50	Complications of Pregnancy, Childbirth and Puerperium	630-676	O00-O99
51	Certain Conditions Originating in the Perinatal Period (stillbirths not included)	760-779	P00-P96
52	Congenital Malformations and Chromosomal Abnormalities	740-759	Q00-Q99
53	Congenital malformations of the Nervous System	740-742	Q00-Q07
54	Congenital malformations of the Circulatory System	745-747	Q20-Q28
55	Symptoms, Signs, Abnormal Findings, Ill-defined Causes	780-799	R00-R99
56	Sudden Infant Death Syndrome	798.0	R95
57	Unknown and Unspecified Causes	798.1-9,799	R96-R99
	Injury and Poisoning	800-999	S00-T98
58	External Causes of Injury and Poisoning (included in the Foregoing)	E800-E999	V01-Y89
59	Accidents	E800-E929	V01-X59
60	Transport Accidents	E800-E848	V01-V99
	Road transport Accidents	E810-E829, E929.0	V01-V80,V87,V89,Y85
	Motor vehicle transport Accidents	E810-E819	
61	Accidental Falls	E880-E888	W00-W19
62	Accidental Poisoning	E850-E869	X40-X49
	other accidents	Rem (E800-E929)	Rem (V01-X59)
63	Suicide and Intentional Self Harm	E950-E959	X60-X84
64	Homicide/Assault	E960-E969	X85-Y09
65	Cause Undetermined	E980-E989	Y10-Y34
	other External Causes	Rem (E930-E999)	

¹ 279.8 not included

Estimated Population classified by Sex and Age Group, 2004 - 2009*thousands*

Sex and Age Group	Persons in April of each year					
	2004	2005	2006 ¹	2007 ²	2008 ²	2009 ²
Total Persons	4,045.2	4,133.8	4,239.8	4,339.0	4,422.1	4,459.3
0 - 4 years	290.7	296.5	302.3	312.3	327.9	341.6
5 - 9 "	274.9	280.6	288.3	295.9	303.4	308.0
10 - 14 "	278.2	276.3	273.9	275.6	281.0	288.1
15 - 19 "	298.4	292.8	290.3	286.0	283.9	278.6
20 - 24 "	336.1	339.5	342.5	347.8	334.0	304.8
25 - 29 "	325.4	345.2	373.1	405.1	416.7	413.4
30 - 34 "	325.1	335.8	349.4	358.0	366.9	371.4
35 - 39 "	303.5	312.1	322.1	331.7	342.1	348.0
40 - 44 "	286.0	294.1	301.3	305.8	310.2	312.5
45 - 49 "	259.2	265.4	274.7	279.8	286.1	293.5
50 - 54 "	238.1	243.1	247.1	252.6	257.2	261.7
55 - 59 "	213.9	221.4	225.3	227.4	232.0	235.4
60 - 64 "	166.0	172.1	181.7	190.5	199.2	207.5
65 - 69 "	137.5	140.8	143.4	143.5	148.8	155.3
70 - 74 "	115.7	117.4	119.2	119.2	120.8	123.2
75 - 79 "	90.0	91.0	92.5	92.1	93.6	95.2
80 - 84 "	63.1	64.0	64.9	65.4	65.2	65.9
85 years and over	43.4	45.7	48.0	50.3	53.2	55.4
Total males	2,011.9	2,061.8	2,121.2	2,171.1	2,206.3	2,217.7
0 - 4 years	148.7	151.7	154.6	160.5	168.2	175.3
5 - 9 "	141.2	144.3	148.0	151.3	154.9	157.6
10 - 14 "	142.8	142.0	140.5	141.3	144.1	147.7
15 - 19 "	152.7	149.8	148.2	145.4	144.6	141.8
20 - 24 "	168.2	170.0	172.8	175.0	165.7	148.6
25 - 29 "	162.9	174.1	189.3	204.7	209.4	204.6
30 - 34 "	161.8	168.7	177.5	182.6	185.3	186.0
35 - 39 "	152.4	157.8	163.8	169.1	174.0	175.6
40 - 44 "	142.5	147.1	151.4	153.6	155.7	157.5
45 - 49 "	129.7	132.9	138.0	140.6	143.4	147.0
50 - 54 "	120.1	122.9	124.6	127.1	129.2	131.5
55 - 59 "	108.5	112.0	113.9	114.9	117.0	118.5
60 - 64 "	83.8	86.7	91.6	96.0	100.4	104.3
65 - 69 "	67.3	69.1	70.9	71.3	73.6	76.9
70 - 74 "	54.6	55.7	56.5	56.6	57.5	58.7
75 - 79 "	37.8	38.8	40.1	40.6	41.8	42.9
80 - 84 "	23.9	24.3	24.7	25.0	25.0	25.9
85 years and over	13.2	14.0	14.8	15.5	16.6	17.5
Total females	2,033.3	2,072.0	2,118.7	2,167.9	2,215.8	2,241.6
0 - 4 years	142.0	144.8	147.7	151.8	159.7	166.4
5 - 9 "	133.8	136.3	140.3	144.6	148.5	150.5
10 - 14 "	135.4	134.4	133.4	134.2	136.9	140.4
15 - 19 "	145.7	143.0	142.0	140.6	139.3	136.8
20 - 24 "	167.9	169.5	169.7	172.8	168.3	156.1
25 - 29 "	162.5	171.1	183.8	200.4	207.3	208.8
30 - 34 "	163.4	167.0	171.9	175.3	181.6	185.4
35 - 39 "	151.1	154.4	158.3	162.5	168.1	172.4
40 - 44 "	143.5	147.1	149.9	152.2	154.5	155.0
45 - 49 "	129.6	132.6	136.8	139.3	142.8	146.5
50 - 54 "	118.0	120.2	122.5	125.5	128.0	130.2
55 - 59 "	105.4	109.4	111.4	112.5	115.0	116.9
60 - 64 "	82.2	85.4	90.2	94.6	98.8	103.2
65 - 69 "	70.2	71.7	72.5	72.2	75.2	78.4
70 - 74 "	61.1	61.7	62.6	62.6	63.3	64.5
75 - 79 "	52.2	52.2	52.3	51.5	51.8	52.4
80 - 84 "	39.2	39.7	40.2	40.4	40.1	40.0
85 years and over	30.2	31.7	33.2	34.8	36.6	37.9

¹ De Facto² Preliminary