



**An Phríomh-Oifig Staidrimh**  
Central Statistics Office

# Vital Statistics

## Third Quarter

2011

Published by the Stationery Office, Dublin, Ireland.

Available from:

Central Statistics Office, Information Section, Skehard Road, Cork.

Compiled by the Central Statistics Office on behalf of the Department of Social Protection.

[No. 591]

April 2012

© Government of Ireland 2012

Material compiled and presented by  
Central Statistics Office.

Reproduction is authorised, except for commercial  
purposes, provided the source is acknowledged.

ISSN 0790-7710

# Contents

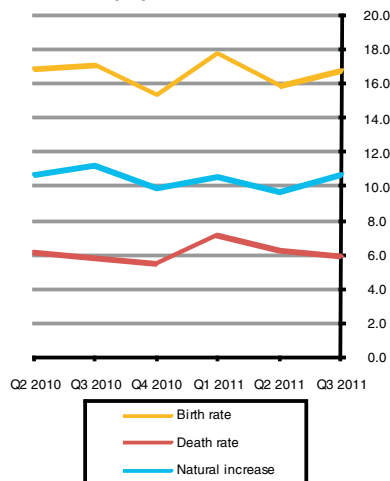
## Third Quarter 2011

	<b>Page</b>
<b>Commentary</b>	4
<b>Tables</b>	
Table 1a	Marriages and births by quarter, 2006, 2010 and 2011 8
Table 1b	Births classified by age of mother at maternity by quarter 2006, 2010 and 2011 and their corresponding annual age specific (asfr) and total period fertility rates (tpfr) 8
Table 2a	Deaths registered by cause of death and by quarter, 2006, 2010 and 2011 9
Table 2b	Deaths registered by cause of death, by age and region 9
Table 3	Marriages, births, deaths and natural increase 10
Table 4	Annual marriage, birth, death and natural increase rates per 1,000 population 11
Table 5	Births registered, classified by area of residence of mother 12
Table 6	Births registered, classified by age of mother and previous number of liveborn children 13
Table 7	Number and percentage of births within and outside marriage, classified by age of mother 14
Table 8	Number and percentage of births registered within and outside marriage, classified by area of residence of mother 15
Table 9	Births registered, classified by area of residence and age of mother 16
Table 10	Births registered outside marriage, classified by area of residence and age of mother 17
Table 11	Births registered, classified by nationality of mother, marital status and age 17
Table 12	Deaths registered by county of residence of deceased 18
Table 13	Deaths registered by cause of death and county of residence of deceased 19
Table 14	Deaths registered classified by cause and age group 20
Table 15	Male deaths registered, classified by cause and age group 22
Table 16	Female deaths registered classified by cause and age group 24
Table 17	Infant and neonatal mortality by area of residence of deceased 26
Background Notes	27
Glossary of terms	28
<b>Appendix</b>	
Causes of death Eurostat shortlist (August 1998)	30
Estimated population classified by sex and age group, 2006-2011	31

# Third Quarter 2011

## Commentary

**Fig. 1.1 Annual birth, death and natural increase rates per 1,000 population**



### Introduction

This report has been prepared by the Central Statistics Office for the Minister for Social Protection in accordance with the provisions of Section 2 of the Vital Statistics and Births, Deaths and Marriages Registration Act, 1952, Section 73 of the Civil Registration Act 2004 and Government Order SI No. 831 of 2007.

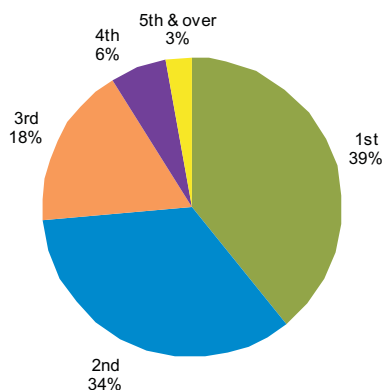
Please note: Caution should be exercised in the interpretation of trends in relation to rates in this publication, as revised population figures for inter census years are not yet available.

### Births

There were 19,222 births registered in quarter 3 of 2011, 9,848 males and 9,374 females. The corresponding total for quarter 3 2010 was 51 lower at 19,171 births, while the quarter 3 2006 total was 2,302 lower at 16,920 births. The quarter 3 2011 total is 23.3% higher than in 2002 when 15,593 babies were registered. See tables 1, 3 and 5.

The 19,222 births represent an annual birth rate of 16.8 per 1,000 of the population. See tables 1, 4, 5 and fig. 1.1.

**Fig. 1.2 Birth Order Q3 2011**



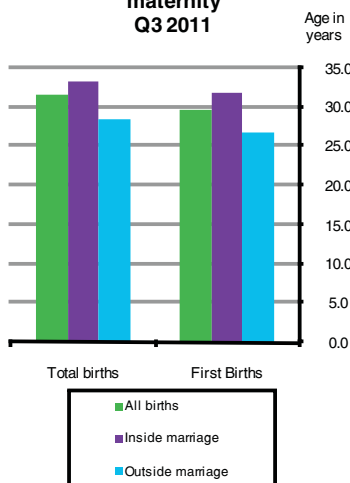
### Birth order

A total of 7,514 births (39.3%) were to first time mothers in quarter 3 of 2011. Second time mothers had 6,557 births (34.3%). First births in the third quarter of 2010 and 2006 accounted for 41.0% and 41.6% of all births, respectively. The number of first births registered in quarter 3 2002 was 6,333 (41.0%). See tables 1, 3, 4, 6 and fig. 1.2.

### Age of mothers

The average age of mothers for births registered in quarter 3 2011 was 31.7 years, 0.3 years more than the corresponding figure in quarter 3 2010, 0.7 years more than in quarter 3 2006, and 1.3 years more than in quarter 3 2002. The average age of mothers having their first child in quarter 3 2011 was 29.7 years. See tables 3, 9 and fig. 1.3.

**Fig. 1.3 Average age at maternity Q3 2011**



### Births outside marriage

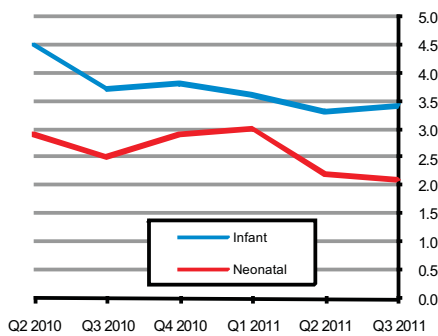
There were 6,543 births registered as outside marriage in quarter 3 of 2011. This accounted for 34% of all births, an increase of 0.2 percentage points on quarter 3 2010 and an increase of 1.3 percentage points on quarter 3 2006. The highest percentage of births outside marriage was in Waterford City at 50%, while the lowest percentage of births outside marriage was in Co Roscommon at 22%. In quarter 3 2002, 4,855 births were registered outside marriage or 31.1% of all births. See tables 1, 3, 4, 8 and 10.

The average age of mothers at maternity outside of marriage, was 28.4 years. This ranged from 30.4 years in Dun Laoghaire Rathdown to 26.8 years in Limerick City. See table 10.

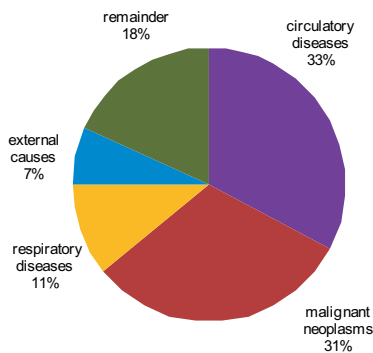
### Deaths

There were 6,911 deaths registered in quarter 3 2011, 3,575 males and 3,336 females. The quarter 3 2011 total is 6.0% higher than in 2010 and 3.8% higher than in 2006, when 6,517 and 6,657 deaths were registered respectively. See tables 2, 3, 12 and fig. 1.1.

**Fig. 1.4 Infant and neonatal mortality rates per 1,000 live births**



**Fig. 1.5 Principal causes of death, Q3 2011**



### Age at death

There were 65 infant deaths registered in quarter 3 2011 giving an infant mortality rate of 3.4 deaths per 1,000 live births. Neonatal deaths are deaths of infants at ages under 4 weeks. There were 41 neonatal deaths registered in quarter 3 2011, a neonatal mortality rate of 2.1 deaths per 1,000 live births. See *tables 3, 4 and fig.1.4*.

There were 5,303 deaths of persons aged 65 and over registered in quarter 3 2011. This represents a 5.8% increase when compared with the corresponding quarter of 2010. See *table 3*.

### Cause of death

- **Diseases of the Heart and Arteries:**

Diseases of the Circulatory System accounted for 2,265 deaths. Of these, 1,201 were due to Ischaemic Heart Disease and 478 to Cerebrovascular Disease. See *tables 2, 14 and fig.1.5*.

- **Malignant Cancers:**

There were 2,163 deaths from malignant neoplasms. This is equivalent to 31.3% of all deaths in the quarter. See *tables 2, 14 and fig.5*.

- **Lung Diseases:**

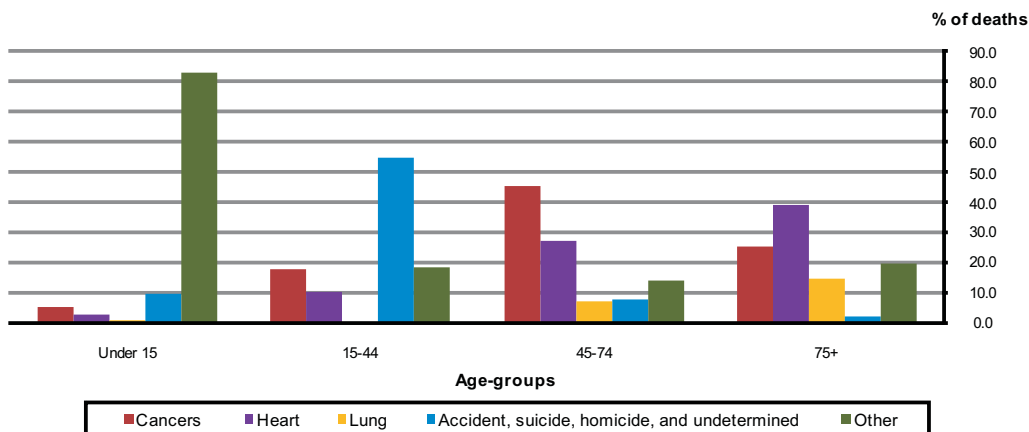
Deaths from pneumonia numbered 211; chronic lower respiratory disease accounted for 348 deaths and 200 deaths resulted from other respiratory diseases. See *tables 2, 14 and fig.1.5*.

- **Accidents, suicides and other:**

There were 462 deaths due to accidents, suicides and other external causes. Accidents accounted for 58% (268) of these deaths, while suicides accounted for 31.6% (146). Of these 462 deaths, 71.4% were male. See *tables 2, 14 and fig.1.5*.

The leading cause of death in quarter 3 2011 varied widely by age group. Among young adults aged 15-44, external causes of death including accidents, suicide and other ranked first. Among individuals aged 45-74, cancers were the leading cause, while for those aged 75 and older, it was diseases of the heart and arteries. See tables 14 and fig.1.6.

**Fig. 1.6 Causes of death classified by age-groups, quarter 3 2011**



### Natural increase

The natural increase in the population (births minus deaths) for quarter 3 2011 was 12,311. This represents a rate of 10.7 per 1,000 population, 0.6 lower than quarter 3 of 2010. See tables 3, 4 and fig.1.1.

### Marriages

The number of marriages registered during the quarter was 7,538, equivalent to an annual marriage rate of 6.6 per 1,000 population, a decrease of 0.4 compared with the corresponding quarter of 2010. The quarter 3 2011 total is 0.6% lower than in quarter 3 2002 when 7,580 marriages were registered. See tables 3 and 4.

### Population

The population in April 2011 was 4,588,252.

## Tables

**Table 1a Marriages and births by quarter, 2006, 2010 and 2011**

Event	Q3 of 2006			Q3 of 2010			Q2 of 2011			Q3 of 2011		
	Number	% of total	Rate <sup>1</sup>	Number	% of total	Rate <sup>1</sup>	Number	% of total	Rate <sup>1</sup>	Number	% of total	Rate <sup>1</sup>
<b>Marriages</b>	<b>8,335</b>	<b>100.0</b>	<b>7.9</b>	<b>7,787</b>	<b>100.0</b>	<b>7.0</b>	<b>5,025</b>	<b>100.0</b>	<b>4.4</b>	<b>7,538</b>	<b>100.0</b>	<b>6.6</b>
<b>Live Births total</b>	<b>16,920</b>	<b>100.0</b>	<b>16.0</b>	<b>19,171</b>	<b>100.0</b>	<b>17.2</b>	<b>18,381</b>	<b>100.0</b>	<b>16.0</b>	<b>19,222</b>	<b>100.0</b>	<b>16.8</b>
<i>of which;</i>												
inside marriage	11,379	67.3	10.7	12,690	66.2	11.4	12,368	67.3	10.8	12,679	66.0	11.1
outside marriage	5,541	32.7	5.2	6,481	33.8	5.8	6,013	32.7	5.2	6,543	34.0	5.7
<b>Sex of child</b>												
Male	8,696	51.4	8.2	9,776	51.0	8.7	9,428	51.3	8.2	9,848	51.2	8.6
Female	8,224	48.6	7.8	9,395	49.0	8.4	8,953	48.7	7.8	9,374	48.8	8.2
<b>Residence of mother</b>												
Border	1,801	10.6	15.4	2,030	10.6	16.3	1,997	10.9	15.5	1,993	10.4	15.5
Midland	1,127	6.7	17.9	1,270	6.6	18.8	1,195	6.5	16.9	1,207	6.3	17.1
West	1,506	8.9	14.5	1,736	9.1	16.1	1,681	9.1	15.1	1,678	8.7	15.1
Dublin	4,601	27.2	15.5	5,384	28.1	17.5	5,185	28.2	16.3	5,528	28.8	17.4
Mid-East	2,236	13.2	18.8	2,626	13.7	20.2	2,484	13.5	18.7	2,464	12.8	18.6
Mid-West	1,472	8.7	16.3	1,539	8.0	16.4	1,380	7.5	14.6	1,628	8.5	17.2
South-East	1,906	11.3	16.5	1,962	10.2	15.9	1,926	10.5	15.5	2,088	10.9	16.8
South-West	2,271	13.4	14.6	2,624	13.7	16.1	2,533	13.8	15.2	2,636	13.7	15.9
<b>Previous no. of liveborn children</b>												
0	6,891	40.7	6.5	7,815	40.8	7.0	7,080	38.5	6.2	7,514	39.1	6.6
1	5,269	31.1	5.0	6,392	33.3	5.7	6,319	34.4	5.5	6,557	34.1	5.7
2	2,818	16.7	2.7	3,145	16.4	2.8	3,141	17.1	2.7	3,376	17.6	2.9
3	1,041	6.2	1.0	1,146	6.0	1.0	1,154	6.3	1.0	1,136	5.9	1.0
4	336	2.0	0.3	361	1.9	0.3	358	1.9	0.3	324	1.7	0.3
5 or more	206	1.2	0.2	224	1.2	0.2	217	1.2	0.2	231	1.2	0.2
Not stated	359	2.1	0.3	88	0.5	0.1	112	0.6	0.1	84	0.4	0.1
<b>Nationality</b>												
Ireland	-	-	-	14,422	75.2	12.9	14,194	77.2	12.4	14,925	77.6	13.0
United Kingdom	-	-	-	430	2.2	0.4	352	1.9	0.3	309	1.6	0.3
Other EU15	-	-	-	299	1.6	0.3	260	1.4	0.2	281	1.5	0.2
Accession states	-	-	-	2,047	10.7	1.8	1,952	10.6	1.7	2,124	11.0	1.9
Other	-	-	-	1,620	8.5	1.4	1,480	8.1	1.3	1,469	7.6	1.3
Not stated	-	-	-	353	1.8	0.3	143	0.8	0.1	114	0.6	0.1
<b>Total</b>	<b>-</b>	<b>-</b>	<b>-</b>	<b>19,171</b>	<b>100.0</b>	<b>17.2</b>	<b>18,381</b>	<b>100.0</b>	<b>16.0</b>	<b>19,222</b>	<b>100.0</b>	<b>16.8</b>

<sup>1</sup> Rate per year per 1,000 population. Rates based on overall population figures for 2011 and 2006 and estimated population figures for 2010. Rates for residence of mother are based on regional population for given year.

**Table 1b Births classified by age of mother at maternity by quarter, 2006, 2010 and 2011 and their corresponding annual age specific (asfr) and total period fertility rates (tpfr)**

Age	Q3 of 2006			Q3 of 2010			Q2 of 2011			Q3 of 2011		
	Number	% of total	Fertility rate	Number	% of total	Fertility rate	Number	% of total	Fertility rate	Number	% of total	Fertility rate
< 20 years	598	3.5	16.9	516	2.7	15.4	402	2.2	11.6	436	2.3	12.6
20-24 years	2,188	12.9	51.6	2,100	11.0	59.0	1,748	9.5	46.4	1,924	10.0	51.1
25-29 years	3,940	23.3	85.8	4,603	24.0	91.7	4,247	23.1	90.7	4,356	22.7	93.0
30-34 years	5,776	34.1	134.4	6,698	34.9	140.5	6,567	35.7	131.9	6,985	36.3	140.3
35-39 years	3,700	21.9	93.5	4,328	22.6	99.4	4,478	24.4	98.4	4,508	23.5	99.1
40-44 years	690	4.1	18.4	878	4.6	22.4	892	4.9	21.7	972	5.1	23.6
45+ years	23	0.1	0.7	44	0.2	1.2	43	0.2	1.1	37	0.2	1.0
Not stated	5	0.0	-	4	0.0	-	4	0.0	-	4	0.0	-
<b>Total</b>	<b>16,920</b>	<b>100.0</b>	<b>2.0</b>	<b>19,171</b>	<b>100.0</b>	<b>2.1</b>	<b>18,381</b>	<b>100.0</b>	<b>2.0</b>	<b>19,222</b>	<b>100.0</b>	<b>2.1</b>

**Table 2a Deaths registered by cause of death and by quarter, 2006, 2010 and 2011**

Quarter	Malignant Cancers		Diseases of the heart and arteries		Lung diseases		Accidents, Suicides & Others		Other Causes		Total	% of total
		% of total		% of total		% of total		% of total		% of total		
Q3 of 2011	2,163	31.3	2,265	32.8	759	11.0	462	6.7	1,262	18.3	6,911	100.0
Q2 of 2011	2,198	30.2	2,351	32.3	920	12.6	434	6.0	1,374	18.9	7,277	100.0
Q3 of 2010	2,031	31.2	2,210	33.9	669	10.3	399	6.1	1,208	18.5	6,517	100.0
Q3 of 2006	2,004	30.1	2,318	34.8	870	13.1	320	4.8	1,145	17.2	6,657	100.0

**Table 2b Deaths registered by cause of death, by age and region, Third Quarter 2011**

Age (years)	Malignant Cancers		Diseases of the heart and arteries		Lung diseases		Accidents, Suicides & Others		Other Causes		Total	% of total
		% of total		% of total		% of total		% of total		% of total		
<b>Persons</b>												
Under 1	1	0.0	1	0.0	1	0.1	-	-	62	4.9	65	0.9
1 - 4	-	-	-	-	-	-	5	1.1	3	0.2	8	0.1
5 - 14	3	0.1	1	0.0	-	-	3	0.6	5	0.4	12	0.2
15 - 24	12	0.6	1	0.0	-	-	61	13.2	13	1.0	87	1.3
25 - 34	12	0.6	7	0.3	1	0.1	73	15.8	17	1.3	110	1.6
35 - 44	41	1.9	28	1.2	7	0.9	65	14.1	30	2.4	171	2.5
45 - 54	133	6.1	100	4.4	8	1.1	88	19.0	70	5.5	399	5.8
55 - 64	383	17.7	169	7.5	40	5.3	59	12.8	105	8.3	756	10.9
65 - 74	558	25.8	368	16.2	110	14.5	37	8.0	155	12.3	1,228	17.8
75 - 84	650	30.1	718	31.7	265	34.9	42	9.1	361	28.6	2,036	29.5
85 +	370	17.1	872	38.5	327	43.1	29	6.3	441	34.9	2,039	29.5
<b>Total</b>	<b>2,163</b>	<b>100.0</b>	<b>2,265</b>	<b>100.0</b>	<b>759</b>	<b>100.0</b>	<b>462</b>	<b>100.0</b>	<b>1,262</b>	<b>100.0</b>	<b>6,911</b>	<b>100.0</b>
<b>Males</b>												
Under 1	1	0.0	-	-	1	0.1	-	-	38	3.0	40	0.6
1 - 4	-	-	-	-	-	-	4	0.9	-	-	4	0.1
5 - 14	3	0.1	1	0.0	-	-	2	0.4	3	0.2	9	0.1
15 - 24	6	0.3	1	0.0	-	-	47	10.2	6	0.5	60	0.9
25 - 34	4	0.2	4	0.2	1	0.1	60	13.0	11	0.9	80	1.2
35 - 44	10	0.5	22	1.0	4	0.5	52	11.3	23	1.8	111	1.6
45 - 54	67	3.1	74	3.3	5	0.7	74	16.0	35	2.8	255	3.7
55 - 64	212	9.8	120	5.3	26	3.4	40	8.7	59	4.7	457	6.6
65 - 74	316	14.6	262	11.6	56	7.4	22	4.8	94	7.4	750	10.9
75 - 84	377	17.4	370	16.3	154	20.3	19	4.1	164	13.0	1,084	15.7
85 +	173	8.0	290	12.8	137	18.1	10	2.2	115	9.1	725	10.5
<b>Total</b>	<b>1,169</b>	<b>54.0</b>	<b>1,144</b>	<b>50.5</b>	<b>384</b>	<b>50.6</b>	<b>330</b>	<b>71.4</b>	<b>548</b>	<b>43.4</b>	<b>3,575</b>	<b>51.7</b>
<b>Females</b>												
Under 1	-	-	1	0.0	-	-	-	-	24	1.9	25	0.4
1 - 4	-	-	-	-	-	-	1	0.2	3	0.2	4	0.1
5 - 14	-	-	-	-	-	-	1	0.2	2	0.2	3	0.0
15 - 24	6	0.3	-	-	-	-	14	3.0	7	0.6	27	0.4
25 - 34	8	0.4	3	0.1	-	-	13	2.8	6	0.5	30	0.4
35 - 44	31	1.4	6	0.3	3	0.4	13	2.8	7	0.6	60	0.9
45 - 54	66	3.1	26	1.1	3	0.4	14	3.0	35	2.8	144	2.1
55 - 64	171	7.9	49	2.2	14	1.8	19	4.1	46	3.6	299	4.3
65 - 74	242	11.2	106	4.7	54	7.1	15	3.2	61	4.8	478	6.9
75 - 84	273	12.6	348	15.4	111	14.6	23	5.0	197	15.6	952	13.8
85 +	197	9.1	582	25.7	190	25.0	19	4.1	326	25.8	1,314	19.0
<b>Total</b>	<b>994</b>	<b>46.0</b>	<b>1,121</b>	<b>49.5</b>	<b>375</b>	<b>49.4</b>	<b>132</b>	<b>28.6</b>	<b>714</b>	<b>56.6</b>	<b>3,336</b>	<b>48.3</b>
<b>Region</b>												
Border	253	11.7	269	11.9	100	13.2	37	8.0	150	11.9	809	11.7
Midland	112	5.2	141	6.2	42	5.5	21	4.5	70	5.5	386	5.6
West	234	10.8	244	10.8	72	9.5	35	7.6	129	10.2	714	10.3
Dublin	608	28.1	615	27.2	228	30.0	163	35.3	348	27.6	1,962	28.4
Mid-East	197	9.1	181	8.0	64	8.4	28	6.1	105	8.3	575	8.3
Mid-West	203	9.4	215	9.5	72	9.5	43	9.3	117	9.3	650	9.4
South-East	252	11.7	267	11.8	90	11.9	60	13.0	139	11.0	808	11.7
South-West	304	14.1	333	14.7	91	12.0	75	16.2	204	16.2	1,007	14.6
<b>Total</b>	<b>2,163</b>	<b>100.0</b>	<b>2,265</b>	<b>100.0</b>	<b>759</b>	<b>100.0</b>	<b>462</b>	<b>100.0</b>	<b>1,262</b>	<b>100.0</b>	<b>6,911</b>	<b>100.0</b>

**Table 3 Marriages, births, deaths and natural increase**

	Marriages <sup>1</sup>	Live Births				Deaths <sup>2</sup>				Natural Increase
		Total	First	Outside marriage	Average Age	Total	Infant	Neonatal	65 & over	
<b>Quarter 1</b>										
2002	2,484	14,972	6,127	4,877	30.3	7,749	73	51	6,281	7,223
2003	2,571	15,238	6,158	5,080	30.3	7,756	67	52	6,259	7,482
2004	2,755	15,599	6,082	5,181	30.7	7,873	72	56	6,347	7,726
2005	2,892	15,334	6,290	5,147	30.9	7,352	65	47	5,920	7,982
2006	3,329	15,958	6,449	5,481	30.9	7,320	56	36	6,040	8,638
2007	3,401	17,473	7,226	5,905	31.1	7,910	48	37	6,326	9,563
2008	3,228	19,154	8,088	6,480	31.1	7,525	63	42	6,011	11,629
*2009	3,450	19,437	8,173	6,621	31.2	8,419	59	41	6,739	11,018
*2010	3,381	19,787	8,312	6,743	31.4	8,006	62	39	6,419	11,781
*2011	3,052	19,950	8,008	6,768	31.7	8,093	72	60	6,455	11,857
<b>Quarter 2</b>										
2002	4,810	15,247	5,858	4,672	30.5	7,680	91	64	6,074	7,567
2003	4,827	15,582	6,095	4,689	30.6	7,203	83	59	5,625	8,379
2004	4,953	15,535	5,897	4,874	30.8	6,881	74	53	5,351	8,654
2005	5,374	15,306	5,922	4,810	31.1	7,349	70	52	5,826	7,957
2006	5,274	15,979	6,315	5,056	31.1	6,967	65	44	5,488	9,012
2007	5,558	17,127	6,926	5,428	31.2	6,902	60	34	5,394	10,225
2008	5,351	19,040	7,712	6,174	31.2	7,569	90	62	5,857	11,471
2009	5,432	18,844	7,858	6,114	31.3	7,020	52	41	5,356	11,824
2010	5,003	18,844	7,749	6,205	31.5	6,929	84	54	5,344	11,915
2011	5,025	18,381	7,080	6,013	31.8	7,277	61	41	5,618	11,104
<b>Quarter 3</b>										
2002	7,580	15,593	6,333	4,855	30.4	6,941	68	50	5,391	8,652
2003	7,996	15,909	6,240	4,981	30.6	6,639	85	68	5,147	9,270
2004	8,376	15,605	6,171	5,100	30.8	6,473	72	43	5,123	9,132
2005	8,347	16,170	6,548	5,101	30.9	6,380	50	33	4,919	9,790
2006	8,335	16,920	6,891	5,541	31.0	6,657	58	46	5,146	10,263
2007	8,949	18,554	7,636	6,019	31.1	6,455	48	32	4,976	12,099
*2008	8,751	19,650	8,259	6,523	31.1	6,674	67	50	5,108	12,976
2009	8,050	19,289	8,170	6,256	31.2	6,638	80	53	5,039	12,651
2010	7,787	19,171	7,815	6,481	31.4	6,517	71	48	5,010	12,654
2011	7,538	19,222	7,514	6,543	31.7	6,911	65	41	5,303	12,311
<b>Quarter 4</b>										
2002	5,682	14,709	5,989	4,411	30.5	6,978	74	49	5,378	7,731
2003	4,908	14,788	5,883	4,563	30.7	7,225	76	52	5,568	7,563
2004	4,895	14,945	5,975	4,783	30.9	6,924	82	62	5,253	8,021
2005	4,742	14,232	5,861	4,470	31.1	6,360	59	45	4,827	7,872
2006	5,151	15,380	6,456	5,217	31.0	6,535	58	42	4,946	8,845
2007	4,848	17,466	7,481	5,818	31.1	6,783	65	46	5,128	10,683
2008	4,857	17,880	7,608	5,904	31.2	6,424	70	46	4,871	11,456
2009	4,699	17,358	7,426	5,757	31.4	6,821	49	34	5,098	10,537
2010	4,464	17,174	7,244	5,865	31.5	6,113	65	49	4,763	11,061
2011										
<b>Total</b>										
2002	20,556	60,521	24,307	18,815	30.4	29,348	306	214	23,124	31,173
2003	20,302	61,517	24,376	19,313	30.6	28,823	311	231	22,599	32,694
2004	20,979	61,684	24,125	19,938	30.8	28,151	300	214	22,074	33,533
2005	21,355	61,042	24,621	19,528	31.0	27,441	244	177	21,492	33,601
2006	22,089	64,237	26,111	21,295	31.0	27,479	237	168	21,620	36,758
2007	22,756	70,620	29,269	23,170	31.1	28,050	221	149	21,824	42,570
*2008	22,187	75,724	31,667	25,081	31.1	28,192	290	200	21,847	47,532
*2009	21,631	74,928	31,627	24,748	31.3	28,898	240	169	22,232	46,030
*2010	20,635	74,976	31,120	25,294	31.5	27,565	282	190	21,536	47,411
2011										

<sup>1</sup> 2002 and 2004 - 2008 marriage figures are final. All other marriage figures are subject to revision.<sup>2</sup> See 'Background Notes' for changes in methodology effective from 2007.<sup>3</sup> See 'Background Notes' for Revised figures effective from Q2 2011.

**Table 4 Annual marriage, birth, death and natural increase rates per 1,000 population**

	Marriages	Live Births			Deaths				Natural Increase
		Total	% First births <sup>1</sup>	% Outside marriage	Total	Infant Mortality <sup>2</sup>	Neonatal Mortality <sup>3</sup>	65 & over	
<b>Quarter 1</b>									
2002	2.6	15.6	41.2	32.6	8.1	4.9	3.4	58.5	7.5
2003	2.6	15.6	40.7	33.3	7.9	4.4	3.4	57.4	7.6
2004	2.8	15.7	40.4	33.2	7.9	4.6	3.6	57.5	7.8
2005	2.9	15.2	41.3	33.6	7.3	4.2	3.1	52.7	7.9
2006	3.2	15.4	41.1	34.3	7.1	3.5	2.3	52.6	8.4
2007	3.2	16.5	42.2	33.8	7.5	2.7	2.1	54.1	9.0
2008	3.0	17.7	42.6	33.8	6.9	3.3	2.2	51.1	10.7
*2009	3.1	17.6	42.2	34.1	7.6	3.0	2.1	56.0	10.0
*2010	3.0	17.7	42.1	34.1	7.2	3.1	2.0	51.9	10.6
*2011	2.7	17.8	40.3	33.9	7.2	3.6	3.0	50.7	10.6
<b>Quarter 2</b>									
2002	4.9	15.6	38.8	30.6	7.8	6.0	4.2	55.7	7.7
2003	4.9	15.7	39.5	30.1	7.2	5.3	3.8	50.9	8.4
2004	4.9	15.4	38.8	31.4	6.8	4.8	3.4	47.6	8.6
2005	5.2	14.8	38.8	31.4	7.1	4.6	3.4	50.8	7.7
2006	5.0	15.1	41.1	31.6	6.6	4.1	2.8	46.9	8.5
2007	5.1	15.8	40.9	31.7	6.4	3.5	2.0	45.9	9.4
2008	4.8	17.2	40.8	32.4	6.8	4.7	3.3	48.6	10.4
2009	4.9	16.9	42.0	32.4	6.3	2.8	2.2	43.3	10.6
2010	4.5	16.9	41.3	32.9	6.2	4.5	2.9	42.0	10.7
2011 <sup>4</sup>	4.4	16.0	38.8	32.7	6.3	3.3	2.2	42.0	9.7
<b>Quarter 3</b>									
2002	7.7	15.9	41.0	31.1	7.1	4.4	3.2	49.5	8.8
2003	8.0	16.0	39.6	31.3	6.7	5.3	4.3	46.6	9.3
2004	8.3	15.4	39.8	32.7	6.4	4.6	2.8	45.6	9.0
2005	8.1	15.6	40.7	31.5	6.2	3.1	2.0	42.9	9.5
2006	7.9	16.0	41.6	32.7	6.3	3.4	2.7	44.0	9.7
2007	8.2	17.1	41.4	32.4	6.0	2.6	1.7	42.3	11.2
*2008	7.9	17.8	42.2	33.2	6.0	3.4	2.5	42.4	11.7
2009	7.2	17.3	42.6	32.4	6.0	4.1	2.7	40.7	11.3
2010	7.0	17.2	41.0	33.8	5.8	3.7	2.5	39.3	11.3
2011	6.6	16.8	39.3	34.0	6.0	3.4	2.1	39.6	10.7
<b>Quarter 4</b>									
2002	5.8	15.0	41.2	30.0	7.1	5.0	3.3	49.3	7.9
2003	4.9	14.9	40.9	30.9	7.3	5.1	3.5	50.4	7.6
2004	4.8	14.8	40.3	32.0	6.8	5.5	4.1	46.7	7.9
2005	4.6	13.8	41.4	31.4	6.2	4.1	3.2	42.1	7.6
2006	4.9	14.5	42.3	33.9	6.2	3.8	2.7	42.3	8.3
2007	4.5	16.1	43.2	33.3	6.3	3.7	2.6	43.6	9.8
2008	4.4	16.2	42.8	33.0	5.8	3.9	2.6	40.5	10.4
2009	4.2	15.6	42.9	33.2	6.1	2.8	2.0	41.2	9.5
2010	4.0	15.4	42.4	34.2	5.5	3.8	2.9	37.4	9.9
2011									
<b>Total</b>									
2002	5.2	15.5	40.5	31.1	7.5	5.1	3.5	53.0	8.0
2003	5.1	15.5	40.2	31.4	7.2	5.1	3.8	51.1	8.2
2004	5.2	15.2	39.8	32.3	7.0	4.9	3.5	49.1	8.3
2005	5.2	14.8	40.5	32.0	6.6	4.0	2.9	46.8	8.1
2006	5.2	15.2	41.5	33.2	6.5	3.7	2.6	46.2	8.7
2007	5.2	16.3	41.9	32.8	6.5	3.1	2.1	46.4	9.8
*2008	5.0	17.1	42.1	33.1	6.4	3.8	2.6	45.4	10.7
*2009	4.9	16.8	42.4	33.0	6.5	3.2	2.3	44.9	10.3
*2010	4.6	16.8	41.7	33.7	6.2	3.8	2.5	42.3	10.6
2011									

<sup>1</sup> First births divided by the total number of live births (excluding those with unstated parity), multiplied by 100.<sup>2</sup> Infant mortality is the number of infant deaths per 1,000 live births.<sup>3</sup> Neonatal mortality is the number of neonatal (infants aged under 4 weeks) deaths per 1,000 live births.<sup>4</sup> 2011 second quarter rates are adjusted in line with the 2011 Census of Population results.<sup>\*</sup> See 'Background Notes' for Revised figures effective from Q2 2011.

**Table 5 Births registered, classified by area of residence of mother, July - September 2011**

Area of residence	Total	Male	Female	Rate <sup>1</sup>
<b>STATE</b>	<b>19,222</b>	<b>9,848</b>	<b>9,374</b>	<b>16.8</b>
<b>LEINSTER</b>	<b>10,949</b>	<b>5,674</b>	<b>5,275</b>	<b>17.5</b>
Carlow	238	127	111	17.4
Dublin City	2,039	1,032	1,007	15.5
South Dublin	1,307	699	608	19.7
Fingal	1,474	727	747	21.5
Dun Laoghaire Rathdown	708	369	339	13.7
Kildare	996	500	496	18.9
Kilkenny	390	200	190	16.3
Laois	333	174	159	16.5
Longford	171	91	80	17.5
Louth	499	251	248	16.2
Meath	936	493	443	20.3
Offaly	355	187	168	18.5
Westmeath	348	190	158	16.2
Wexford	623	358	265	17.1
Wicklow	532	276	256	15.6
<b>MUNSTER</b>	<b>5,101</b>	<b>2,534</b>	<b>2,567</b>	<b>16.4</b>
Clare	466	228	238	15.9
Cork City	409	209	200	13.7
Cork County	1,725	842	883	17.3
Kerry	502	244	258	13.8
Limerick City	196	94	102	13.7
Limerick County	614	307	307	18.2
North Tipperary	352	177	175	20.0
South Tipperary	352	184	168	15.9
Waterford City	228	124	104	19.5
Waterford County	257	125	132	15.3
<b>CONNACHT</b>	<b>2,026</b>	<b>1,041</b>	<b>985</b>	<b>14.9</b>
Galway City	270	145	125	14.3
Galway County	759	389	370	17.3
Leitrim	106	47	59	13.3
Mayo	426	217	209	13.0
Roscommon	223	112	111	13.9
Sligo	242	131	111	14.8
<b>ULSTER (PART OF)</b>	<b>1,146</b>	<b>599</b>	<b>547</b>	<b>15.5</b>
Cavan	348	194	154	19.0
Donegal	554	270	284	13.8
Monaghan	244	135	109	16.1
<b>REGIONAL AUTHORITIES:</b>				
Border	1,993	1,028	965	15.5
Midland	1,207	642	565	17.1
West	1,678	863	815	15.1
Dublin	5,528	2,827	2,701	17.4
Mid-East	2,464	1,269	1,195	18.6
Mid-West	1,628	806	822	17.2
South-East	2,088	1,118	970	16.8
South-West	2,636	1,295	1,341	15.9

<sup>1</sup> Births per year per 1,000 population. Annual rates based on 2011 population.

**Table 6 Births registered, classified by age of mother and previous number of liveborn children, July - September 2011**

Age of mother at maternity	Total	Previous number of liveborn children						
		0	1	2	3	4	5 or more	Not stated
<b>All ages</b>	<b>19,222</b>	<b>7,514</b>	<b>6,557</b>	<b>3,376</b>	<b>1,136</b>	<b>324</b>	<b>231</b>	<b>84</b>
15 and under	15	14	1	0	0	0	0	0
16	32	32	0	0	0	0	0	0
17	69	67	2	0	0	0	0	0
18	106	94	12	0	0	0	0	0
19	214	180	29	5	0	0	0	0
<b>Under 20</b>	<b>436</b>	<b>387</b>	<b>44</b>	<b>5</b>	<b>0</b>	<b>0</b>	<b>0</b>	<b>0</b>
20	282	215	55	11	1	0	0	0
21	324	224	84	12	1	0	1	2
22	368	215	114	30	6	1	1	1
23	443	235	162	29	11	2	0	4
24	507	253	195	38	14	4	0	3
<b>20-24</b>	<b>1,924</b>	<b>1,142</b>	<b>610</b>	<b>120</b>	<b>33</b>	<b>7</b>	<b>2</b>	<b>10</b>
25	631	347	214	45	22	2	0	1
26	727	367	243	81	24	5	3	4
27	850	421	292	97	29	5	1	5
28	1,028	506	338	136	34	9	3	2
29	1,120	527	371	144	51	15	7	5
<b>25-29</b>	<b>4,356</b>	<b>2,168</b>	<b>1,458</b>	<b>503</b>	<b>160</b>	<b>36</b>	<b>14</b>	<b>17</b>
30	1,340	594	478	171	64	16	13	4
31	1,449	611	515	218	61	18	20	6
32	1,507	553	566	268	73	28	12	7
33	1,366	447	538	252	84	20	18	7
34	1,323	366	511	295	102	24	22	3
<b>30-34</b>	<b>6,985</b>	<b>2,571</b>	<b>2,608</b>	<b>1,204</b>	<b>384</b>	<b>106</b>	<b>85</b>	<b>27</b>
35	1,232	325	455	321	87	27	14	3
36	1,020	254	359	269	92	26	19	1
37	923	208	314	252	96	31	19	3
38	728	128	217	236	92	27	22	6
39	605	105	189	197	77	18	14	5
<b>35-39</b>	<b>4,508</b>	<b>1,020</b>	<b>1,534</b>	<b>1,275</b>	<b>444</b>	<b>129</b>	<b>88</b>	<b>18</b>
40	408	90	123	111	52	16	10	6
41	247	45	69	76	29	11	15	2
42	181	40	63	46	18	8	4	2
43	92	23	30	18	8	6	7	0
44	44	15	8	10	2	4	4	1
<b>40-44</b>	<b>972</b>	<b>213</b>	<b>293</b>	<b>261</b>	<b>109</b>	<b>45</b>	<b>40</b>	<b>11</b>
<b>45 and over</b>	<b>37</b>	<b>11</b>	<b>9</b>	<b>7</b>	<b>6</b>	<b>1</b>	<b>2</b>	<b>1</b>
Age not stated	4	2	1	1	0	0	0	0

**Table 7 Number and percentage of births registered within and outside marriage, classified by age of mother, July - September 2011**

Age of mother at maternity	Total	Married parents	Unmarried Parents		% to married parents	% to unmarried parents	
			Total	Same address		Total	Same address
	Number				Percentage		
<b>All ages</b>	<b>19,222</b>	<b>12,679</b>	<b>6,543</b>	<b>3,556</b>	<b>66</b>	<b>34</b>	<b>18</b>
15 and under	15	0	15	3	0	100	20
16	32	0	32	1	0	100	3
17	69	2	67	8	3	97	12
18	106	7	99	25	7	93	24
19	214	23	191	55	11	89	26
<b>Under 20</b>	<b>436</b>	<b>32</b>	<b>404</b>	<b>92</b>	<b>7</b>	<b>93</b>	<b>21</b>
20	282	29	253	80	10	90	28
21	324	36	288	104	11	89	32
22	368	66	302	123	18	82	33
23	443	84	359	162	19	81	37
24	507	132	375	182	26	74	36
<b>20-24</b>	<b>1,924</b>	<b>347</b>	<b>1,577</b>	<b>651</b>	<b>18</b>	<b>82</b>	<b>34</b>
25	631	213	418	219	34	66	35
26	727	313	414	218	43	57	30
27	850	415	435	261	49	51	31
28	1,028	628	400	243	61	39	24
29	1,120	714	406	264	64	36	24
<b>25-29</b>	<b>4,356</b>	<b>2,283</b>	<b>2,073</b>	<b>1,205</b>	<b>52</b>	<b>48</b>	<b>28</b>
30	1,340	953	387	260	71	29	19
31	1,449	1,115	334	212	77	23	15
32	1,507	1,175	332	222	78	22	15
33	1,366	1,115	251	172	82	18	13
34	1,323	1,095	228	133	83	17	10
<b>30-34</b>	<b>6,985</b>	<b>5,453</b>	<b>1,532</b>	<b>999</b>	<b>78</b>	<b>22</b>	<b>14</b>
35	1,232	1,030	202	126	84	16	10
36	1,020	839	181	120	82	18	12
37	923	766	157	102	83	17	11
38	728	613	115	77	84	16	11
39	605	503	102	69	83	17	11
<b>35-39</b>	<b>4,508</b>	<b>3,751</b>	<b>757</b>	<b>494</b>	<b>83</b>	<b>17</b>	<b>11</b>
40	408	329	79	47	81	19	12
41	247	204	43	21	83	17	9
42	181	137	44	27	76	24	15
43	92	75	17	13	82	18	14
44	44	34	10	3	77	23	7
<b>40-44</b>	<b>972</b>	<b>779</b>	<b>193</b>	<b>111</b>	<b>80</b>	<b>20</b>	<b>11</b>
<b>45 and over</b>	<b>37</b>	<b>32</b>	<b>5</b>	<b>4</b>	<b>86</b>	<b>14</b>	<b>11</b>
Age not stated	4	2	2	0	50	50	0

**Table 8 Number and percentage of births registered within and outside marriage, classified by area of residence of mother, July - September 2011**

Area of residence	Total	Married parents	Unmarried Parents		% to married parents	% to unmarried parents	
			Total	Same address		Total	Same address
	Number				Percentage		
<b>STATE</b>	<b>19,222</b>	<b>12,679</b>	<b>6,543</b>	<b>3,556</b>	<b>66</b>	<b>34</b>	<b>18</b>
<b>LEINSTER</b>	<b>10,949</b>	<b>6,967</b>	<b>3,982</b>	<b>2,101</b>	<b>64</b>	<b>36</b>	<b>19</b>
Carlow	238	153	85	56	64	36	24
Dublin City	2,039	1,131	908	364	55	45	18
South Dublin	1,307	759	548	268	58	42	21
Fingal	1,474	999	475	281	68	32	19
Dun Laoghaire Rathdown	708	530	178	96	75	25	14
Kildare	996	687	309	181	69	31	18
Kilkenny	390	271	119	73	69	31	19
Laois	333	205	128	82	62	38	25
Longford	171	114	57	30	67	33	18
Louth	499	286	213	113	57	43	23
Meath	936	682	254	162	73	27	17
Offaly	355	220	135	81	62	38	23
Westmeath	348	218	130	77	63	37	22
Wexford	623	367	256	130	59	41	21
Wicklow	532	345	187	107	65	35	20
<b>MUNSTER</b>	<b>5,101</b>	<b>3,447</b>	<b>1,654</b>	<b>927</b>	<b>68</b>	<b>32</b>	<b>18</b>
Clare	466	326	140	96	70	30	21
Cork City	409	219	190	69	54	46	17
Cork County	1,725	1,270	455	284	74	26	16
Kerry	502	352	150	89	70	30	18
Limerick City	196	106	90	32	54	46	16
Limerick County	614	431	183	106	70	30	17
North Tipperary	352	235	117	74	67	33	21
South Tipperary	352	215	137	83	61	39	24
Waterford City	228	114	114	54	50	50	24
Waterford County	257	179	78	40	70	30	16
<b>CONNACHT</b>	<b>2,026</b>	<b>1,485</b>	<b>541</b>	<b>336</b>	<b>73</b>	<b>27</b>	<b>17</b>
Galway City	270	193	77	49	71	29	18
Galway County	759	561	198	127	74	26	17
Leitrim	106	82	24	16	77	23	15
Mayo	426	324	102	60	76	24	14
Roscommon	223	174	49	35	78	22	16
Sligo	242	151	91	49	62	38	20
<b>ULSTER (PART OF)</b>	<b>1,146</b>	<b>780</b>	<b>366</b>	<b>192</b>	<b>68</b>	<b>32</b>	<b>17</b>
Cavan	348	241	107	68	69	31	20
Donegal	554	368	186	90	66	34	16
Monaghan	244	171	73	34	70	30	14
<b>REGIONAL AUTHORITIES:</b>							
Border	1,993	1,299	694	370	65	35	19
Midland	1,207	757	450	270	63	37	22
West	1,678	1,252	426	271	75	25	16
Dublin	5,528	3,419	2,109	1,009	62	38	18
Mid-East	2,464	1,714	750	413	70	30	17
Mid-West	1,628	1,098	530	308	67	33	19
South-East	2,088	1,299	789	473	62	38	23
South-West	2,636	1,841	795	442	70	30	17

**Table 9 Births registered, classified by area of residence and age of mother, July - September 2011**

Area of residence	Total	Under 20	20-24	25-29	30-34	35-39	40 and over	Age not stated	Average age of mother at maternity	
									Total	First
<b>STATE</b>	<b>19,222</b>	<b>436</b>	<b>1,924</b>	<b>4,356</b>	<b>6,985</b>	<b>4,508</b>	<b>1,009</b>	<b>4</b>	<b>31.7</b>	<b>29.7</b>
<b>LEINSTER</b>	<b>10,949</b>	<b>266</b>	<b>1,182</b>	<b>2,545</b>	<b>3,900</b>	<b>2,478</b>	<b>576</b>	<b>2</b>	<b>31.5</b>	<b>29.6</b>
Carlow	238	14	21	59	88	47	9	0	30.9	28.5
Dublin City	2,039	67	265	495	684	428	100	0	31.0	29.4
South Dublin	1,307	35	157	342	462	250	60	1	30.9	29.1
Fingal	1,474	25	128	337	545	354	84	1	31.9	30.4
Dun Laoghaire Rathdown	708	3	44	106	263	220	72	0	33.6	31.4
Kildare	996	21	88	214	378	247	48	0	32.0	30.1
Kilkenny	390	9	38	71	157	98	17	0	32.1	30.4
Laois	333	9	30	91	118	72	13	0	31.3	28.4
Longford	171	6	27	35	52	40	11	0	31.3	28.6
Louth	499	9	75	132	158	97	28	0	30.9	28.8
Meath	936	12	69	227	346	236	46	0	32.1	29.9
Offaly	355	8	57	82	122	68	18	0	30.8	28.6
Westmeath	348	10	46	88	127	62	15	0	30.8	27.8
Wexford	623	24	92	139	220	124	24	0	30.8	28.6
Wicklow	532	14	45	127	180	135	31	0	31.8	29.4
<b>MUNSTER</b>	<b>5,101</b>	<b>114</b>	<b>460</b>	<b>1,116</b>	<b>1,878</b>	<b>1,262</b>	<b>271</b>	<b>0</b>	<b>31.9</b>	<b>29.8</b>
Clare	466	7	48	90	181	108	32	0	32.2	30.4
Cork City	409	13	66	106	136	75	13	0	30.2	28.2
Cork County	1,725	19	117	355	676	459	99	0	32.5	30.6
Kerry	502	9	30	110	191	130	32	0	32.6	30.6
Limerick City	196	19	31	47	56	34	9	0	29.6	25.9
Limerick County	614	13	48	132	224	162	35	0	32.2	29.8
North Tipperary	352	10	29	85	122	90	16	0	31.9	30.1
South Tipperary	352	7	41	82	128	78	16	0	31.4	29.9
Waterford City	228	8	33	65	75	37	10	0	30.4	28.6
Waterford County	257	9	17	44	89	89	9	0	32.4	29.5
<b>CONNACHT</b>	<b>2,026</b>	<b>30</b>	<b>160</b>	<b>423</b>	<b>766</b>	<b>535</b>	<b>111</b>	<b>1</b>	<b>32.3</b>	<b>30.3</b>
Galway City	270	4	23	71	88	70	14	0	32.0	30.3
Galway County	759	10	55	143	290	211	50	0	32.7	30.5
Leitrim	106	1	5	26	45	23	6	0	32.2	30.8
Mayo	426	5	36	83	168	113	21	0	32.4	30.7
Roscommon	223	3	21	51	82	55	10	1	31.8	29.6
Sligo	242	7	20	49	93	63	10	0	31.8	29.7
<b>ULSTER (PART OF)</b>	<b>1,146</b>	<b>26</b>	<b>122</b>	<b>272</b>	<b>441</b>	<b>233</b>	<b>51</b>	<b>1</b>	<b>31.4</b>	<b>29.0</b>
Cavan	348	9	31	84	132	78	14	0	31.5	29.0
Donegal	554	12	64	129	217	101	30	1	31.3	29.0
Monaghan	244	5	27	59	92	54	7	0	31.4	28.9
<b>REGIONAL AUTHORITIES:</b>										
Border	1,993	43	222	479	737	416	95	1	31.4	29.1
Midland	1,207	33	160	296	419	242	57	0	31.0	28.3
West	1,678	22	135	348	628	449	95	1	32.4	30.4
Dublin	5,528	130	594	1,280	1,954	1,252	316	2	31.6	29.9
Mid-East	2,464	47	202	568	904	618	125	0	32.0	29.9
Mid-West	1,628	49	156	354	583	394	92	0	31.8	29.5
South-East	2,088	71	242	460	757	473	85	0	31.3	29.3
South-West	2,636	41	213	571	1,003	664	144	0	32.2	30.2

**Table 10 Births registered outside marriage, classified by area of residence and age of mother, July - September 2011**

Area of residence	Total	Under 25	25-29	30-34	35-39	40 and over	Age not stated	Average age of mother at maternity	
								Total	First
<b>STATE</b>	<b>6,543</b>	<b>1,981</b>	<b>2,073</b>	<b>1,532</b>	<b>757</b>	<b>198</b>	<b>2</b>	<b>28.4</b>	<b>26.8</b>
<b>LEINSTER</b>	<b>3,982</b>	<b>1,212</b>	<b>1,278</b>	<b>919</b>	<b>451</b>	<b>122</b>	<b>0</b>	<b>28.4</b>	<b>26.8</b>
Carlow	85	28	35	13	7	2	0	27.3	24.7
Dublin City	908	280	283	211	109	25	0	28.3	27.1
South Dublin	548	152	187	130	62	17	0	28.5	26.8
Fingal	475	127	159	111	62	16	0	28.9	27.4
Dun Laoghaire Rathdown	178	42	43	48	30	15	0	30.4	28.8
Kildare	309	94	106	70	33	6	0	28.4	27.4
Kilkenny	119	38	34	30	13	4	0	28.6	28.0
Laois	128	35	41	38	13	1	0	28.5	26.4
Longford	57	27	13	10	6	1	0	27.5	24.6
Louth	213	71	73	45	20	4	0	28.0	26.6
Meath	254	60	87	66	31	10	0	29.2	27.2
Offaly	135	61	36	27	8	3	0	26.9	24.6
Westmeath	130	45	44	24	12	5	0	27.8	24.2
Wexford	256	100	69	60	23	4	0	27.5	25.7
Wicklow	187	52	68	36	22	9	0	28.5	26.0
<b>MUNSTER</b>	<b>1,654</b>	<b>493</b>	<b>517</b>	<b>389</b>	<b>201</b>	<b>54</b>	<b>0</b>	<b>28.5</b>	<b>26.8</b>
Clare	140	45	35	36	17	7	0	29.0	27.4
Cork City	190	70	56	44	16	4	0	27.4	25.7
Cork County	455	115	157	111	60	12	0	28.9	27.6
Kerry	150	31	48	39	24	8	0	30.0	27.8
Limerick City	90	42	18	16	9	5	0	26.8	23.0
Limerick County	183	53	58	42	25	5	0	28.5	26.9
North Tipperary	117	35	49	14	16	3	0	28.3	26.3
South Tipperary	137	41	40	40	12	4	0	28.4	27.0
Waterford City	114	35	35	28	11	5	0	28.4	27.2
Waterford County	78	26	21	19	11	1	0	28.1	25.8
<b>CONNACHT</b>	<b>541</b>	<b>149</b>	<b>163</b>	<b>141</b>	<b>69</b>	<b>18</b>	<b>1</b>	<b>28.9</b>	<b>27.5</b>
Galway City	77	19	23	22	11	2	0	29.3	28.5
Galway County	198	53	57	51	27	10	0	29.4	27.5
Leitrim	24	6	10	6	1	1	0	28.3	26.7
Mayo	102	29	31	29	11	2	0	28.5	27.4
Roscommon	49	16	18	9	4	1	1	27.7	26.7
Sligo	91	26	24	24	15	2	0	28.8	27.1
<b>ULSTER (PART OF)</b>	<b>366</b>	<b>127</b>	<b>115</b>	<b>83</b>	<b>36</b>	<b>4</b>	<b>1</b>	<b>27.7</b>	<b>25.8</b>
Cavan	107	31	39	23	13	1	0	27.9	25.3
Donegal	186	69	56	43	14	3	1	27.4	25.9
Monaghan	73	27	20	17	9	0	0	27.9	26.4
<b>REGIONAL AUTHORITIES:</b>									
Border	694	230	222	158	72	11	1	27.9	26.3
Midland	450	168	134	99	39	10	0	27.7	25.1
West	426	117	129	111	53	15	1	29.0	27.6
Dublin	2,109	601	672	500	263	73	0	28.7	27.3
Mid-East	750	206	261	172	86	25	0	28.7	27.0
Mid-West	530	175	160	108	67	20	0	28.3	26.2
South-East	789	268	234	190	77	20	0	28.0	26.4
South-West	795	216	261	194	100	24	0	28.8	27.1

**Table 11 Births registered, classified by nationality of mother, marital status and age, July - September 2011**

Nationality of mother	Total births	% of total births	% of births outside marriage	Average age
<b>TOTAL</b>	<b>19,222</b>	<b>100.0</b>	<b>34.0</b>	<b>31.7</b>
Ireland	14,925	77.6	34.4	32.1
United Kingdom	309	1.6	42.4	32.0
EU15 excl. Irl & UK	281	1.5	36.3	32.6
Accession states (EU27 excl. EU15)	2,124	11.0	39.0	29.3
Other	1,469	7.6	20.3	31.5
Not stated	114	0.6	47.4	30.1

**Table 12 Deaths registered by county of residence of deceased, July - September 2011**

Area of residence	Total	Male	Female	Rate <sup>1</sup>
<b>STATE</b>	<b>6,911</b>	<b>3,575</b>	<b>3,336</b>	<b>6.0</b>
<b>LEINSTER</b>	<b>3,551</b>	<b>1,795</b>	<b>1,756</b>	<b>5.7</b>
Carlow	95	52	43	7.0
Dublin City	1,037	513	524	7.9
South Dublin	330	167	163	5.0
Fingal	240	110	130	3.5
Dun Laoghaire Rathdown	355	173	182	6.9
Kildare	201	114	87	3.8
Kilkenny	149	75	74	6.2
Laois	88	38	50	4.4
Longford	63	35	28	6.5
Louth	169	81	88	5.5
Meath	178	101	77	3.9
Offaly	96	47	49	5.0
Westmeath	139	69	70	6.5
Wexford	215	115	100	5.9
Wicklow	196	105	91	5.7
<b>MUNSTER</b>	<b>2,006</b>	<b>1,059</b>	<b>947</b>	<b>6.4</b>
Clare	197	98	99	6.7
Cork City	234	125	109	7.9
Cork County	478	246	232	4.8
Kerry	295	162	133	8.1
Limerick City	118	60	58	8.3
Limerick County	205	113	92	6.1
North Tipperary	130	64	66	7.4
South Tipperary	149	83	66	6.7
Waterford City	77	39	38	6.6
Waterford County	123	69	54	7.3
<b>CONNACHT</b>	<b>894</b>	<b>457</b>	<b>437</b>	<b>6.6</b>
Galway City	84	44	40	4.4
Galway County	262	144	118	6.0
Leitrim	57	24	33	7.2
Mayo	267	129	138	8.2
Roscommon	101	54	47	6.3
Sligo	123	62	61	7.5
<b>ULSTER (PART OF)</b>	<b>460</b>	<b>264</b>	<b>196</b>	<b>6.2</b>
Cavan	131	73	58	7.2
Donegal	235	133	102	5.8
Monaghan	94	58	36	6.2
<b>REGIONAL AUTHORITIES:</b>				
Border	809	431	378	6.3
Midland	386	189	197	5.5
West	714	371	343	6.4
Dublin	1,962	963	999	6.2
Mid-East	575	320	255	4.3
Mid-West	650	335	315	6.9
South-East	808	433	375	6.5
South-West	1,007	533	474	6.1

<sup>1</sup> Deaths per year per 1,000 population. Annual rates based on 2011 population.

**Table 13 Deaths registered by cause of death and county of residence of deceased,  
July - September 2011**

Area of residence	Total deaths	Malignant Neoplasms	Diseases of the Circulatory system	Diseases of the Respiratory system	External causes	All other causes
<b>STATE</b>	<b>6,911</b>	<b>2,163</b>	<b>2,265</b>	<b>759</b>	<b>462</b>	<b>1,262</b>
<b>LEINSTER</b>	<b>3,551</b>	<b>1,104</b>	<b>1,131</b>	<b>412</b>	<b>253</b>	<b>651</b>
Carlow	95	29	27	14	5	20
Dublin City	1,037	313	353	116	83	172
South Dublin	330	94	87	41	37	71
Fingal	240	89	69	18	21	43
Dun Laoghaire Rathdown	355	112	106	53	22	62
Kildare	201	63	58	27	15	38
Kilkenny	149	36	50	19	9	35
Laois	88	30	29	6	5	18
Longford	63	15	24	6	1	17
Louth	169	50	53	18	12	36
Meath	178	64	54	16	6	38
Offaly	96	23	41	14	3	15
Westmeath	139	44	47	16	12	20
Wexford	215	72	64	27	15	37
Wicklow	196	70	69	21	7	29
<b>MUNSTER</b>	<b>2,006</b>	<b>622</b>	<b>674</b>	<b>193</b>	<b>149</b>	<b>368</b>
Clare	197	66	65	24	7	35
Cork City	234	59	78	17	13	67
Cork County	478	169	151	34	38	86
Kerry	295	76	104	40	24	51
Limerick City	118	42	31	18	11	16
Limerick County	205	56	67	19	19	44
North Tipperary	130	39	52	11	6	22
South Tipperary	149	46	54	14	16	19
Waterford City	77	27	25	7	5	13
Waterford County	123	42	47	9	10	15
<b>CONNACHT</b>	<b>894</b>	<b>283</b>	<b>315</b>	<b>94</b>	<b>39</b>	<b>163</b>
Galway City	84	26	27	5	8	18
Galway County	262	90	79	33	13	47
Leitrim	57	10	24	8	2	13
Mayo	267	84	100	21	13	49
Roscommon	101	34	38	13	1	15
Sligo	123	39	47	14	2	21
<b>ULSTER (PART OF)</b>	<b>460</b>	<b>154</b>	<b>145</b>	<b>60</b>	<b>21</b>	<b>80</b>
Cavan	131	36	43	22	10	20
Donegal	235	87	72	28	6	42
Monaghan	94	31	30	10	5	18
<b>REGIONAL AUTHORITIES:</b>						
Border	809	253	269	100	37	150
Midland	386	112	141	42	21	70
West	714	234	244	72	35	129
Dublin	1,962	608	615	228	163	348
Mid-East	575	197	181	64	28	105
Mid-West	650	203	215	72	43	117
South-East	808	252	267	90	60	139
South-West	1,007	304	333	91	75	204

Table 14 Deaths registered classified by cause and age group, July - September 2011

Cause of Death	65 COD Code	ICD-10 Code	Total Deaths	Age Group										
				Under 1	1-4	5-14	15-24	25-34	35-44	45-54	55-64	65-74	75-84	85 and over
<b>Total deaths</b>	<b>0</b>	<b>A00-Y89</b>	<b>6,911</b>	<b>65</b>	<b>8</b>	<b>12</b>	<b>87</b>	<b>110</b>	<b>171</b>	<b>399</b>	<b>756</b>	<b>1,228</b>	<b>2,036</b>	<b>2,039</b>
<b>Infectious and parasitic diseases:-</b>	<b>1</b>	<b>A00-B99</b>	<b>62</b>	<b>4</b>	<b>0</b>	<b>0</b>	<b>0</b>	<b>3</b>	<b>1</b>	<b>12</b>	<b>5</b>	<b>4</b>	<b>14</b>	<b>19</b>
Tuberculosis	2	A15-A19,B90	8	0	0	0	0	0	1	1	0	0	4	4
Meningococcal infection	3	A39	0	0	0	0	0	0	0	0	0	0	0	0
AIDS (HIV Disease)	4	B20-B24	1	0	0	0	0	1	0	0	0	0	0	0
Viral Hepatitis	5	B15-B19	12	0	0	0	0	2	0	9	1	0	0	0
Other infectious and parasitic diseases			41	4	0	0	0	0	0	2	4	4	10	17
<b>Neoplasms</b>	<b>6</b>	<b>C00-D48</b>	<b>2,218</b>	<b>1</b>	<b>0</b>	<b>3</b>	<b>13</b>	<b>12</b>	<b>43</b>	<b>133</b>	<b>388</b>	<b>571</b>	<b>668</b>	<b>386</b>
<b>Malignant Neoplasms of the:-</b>	<b>7</b>	<b>C00-C97</b>	<b>2,163</b>	<b>1</b>	<b>0</b>	<b>3</b>	<b>12</b>	<b>12</b>	<b>41</b>	<b>133</b>	<b>383</b>	<b>558</b>	<b>650</b>	<b>370</b>
Lip, oral cavity, pharynx	8	C00-C14	47	0	0	0	0	0	1	6	10	16	8	6
Oesophagus	9	C15	77	0	0	0	0	0	0	4	13	23	25	12
Stomach	10	C16	84	0	0	0	1	0	2	5	11	18	28	19
Colon	11	C18	129	0	0	0	0	0	1	3	16	33	47	29
Rectum and anus	12	C19-C21	140	0	0	0	0	0	3	4	24	35	48	26
Liver and the intrahepatic bile ducts	13	C22	60	0	0	0	0	0	2	7	8	15	21	7
Pancreas	14	C25	125	0	0	0	0	0	0	14	17	38	39	17
Larynx and trachea/bronchus /lung	15	C32-C34	483	0	0	0	0	1	2	33	104	149	142	52
Skin	16	C43	45	0	0	0	1	1	2	5	12	9	10	5
Breast	17	C50	176	0	0	0	0	1	9	14	37	46	31	38
Cervix uteri	18	C53	21	0	0	0	0	2	6	2	3	3	1	1
Other parts of uterus	19	C54-C55	22	0	0	0	0	0	0	1	3	7	9	2
Ovary	20	C56	73	0	0	0	1	0	1	2	19	20	22	8
Prostate	21	C61	131	0	0	0	0	0	0	0	7	25	59	40
Kidney	22	C64	50	0	0	0	0	0	1	3	14	9	11	12
Bladder	23	C67	63	0	0	1	0	0	0	2	3	11	27	19
Lymph/haematopoietic tissue	24	C81-C96	174	0	0	0	3	1	4	7	28	42	53	36
Other malignant neoplasms			263	1	0	2	6	6	7	21	51	59	69	41
<b>Diseases of the blood and blood-forming organs, immunological disorders</b>	<b>25</b>	<b>D50-D89</b>	<b>14</b>	<b>0</b>	<b>0</b>	<b>0</b>	<b>0</b>	<b>1</b>	<b>0</b>	<b>1</b>	<b>3</b>	<b>0</b>	<b>4</b>	<b>5</b>
<b>Endocrine, Nutritional and metabolic diseases</b>	<b>26</b>	<b>E00-E90</b>	<b>140</b>	<b>2</b>	<b>0</b>	<b>0</b>	<b>4</b>	<b>3</b>	<b>3</b>	<b>1</b>	<b>9</b>	<b>19</b>	<b>52</b>	<b>47</b>
Diabetes mellitus	27	E10-E14	111	0	0	0	2	2	1	0	8	17	41	40
<b>Mental and behavioural disorders</b>	<b>28</b>	<b>F00-F99</b>	<b>186</b>	<b>0</b>	<b>1</b>	<b>0</b>	<b>0</b>	<b>0</b>	<b>0</b>	<b>1</b>	<b>6</b>	<b>17</b>	<b>57</b>	<b>104</b>
Alcohol abuse (including alcoholic psychosis)	29	F10	5	0	0	0	0	0	0	1	2	2	0	0
Drug dependence, toxicomania	30	F11-F16,F18-F19	0	0	0	0	0	0	0	0	0	0	0	0
<b>Diseases of the nervous system and the sense organs</b>	<b>31</b>	<b>G00-H95</b>	<b>250</b>	<b>1</b>	<b>0</b>	<b>2</b>	<b>2</b>	<b>5</b>	<b>8</b>	<b>14</b>	<b>19</b>	<b>30</b>	<b>84</b>	<b>85</b>
Meningitis	32	G00-G03	1	0	0	0	0	0	0	0	1	0	0	0
<b>Diseases of the Circulatory System:-</b>	<b>33</b>	<b>I00-I99</b>	<b>2,265</b>	<b>1</b>	<b>0</b>	<b>1</b>	<b>1</b>	<b>7</b>	<b>28</b>	<b>100</b>	<b>169</b>	<b>368</b>	<b>718</b>	<b>872</b>
Ischaemic heart disease	34	I20-I25	1,201	0	0	0	0	1	14	61	113	220	389	403
of which: (Acute myocardial infarction)		/I21	469	0	0	0	0	0	7	20	27	78	160	177
Other heart disease	35	I30-I33,I39-I52	286	1	0	1	0	1	6	14	15	28	74	146
Cerebrovascular disease	36	I60-I69	478	0	0	1	1	3	7	15	21	62	163	206
Other diseases of circulatory system			300	0	0	0	0	2	1	10	20	58	92	117



**Table 15 Male deaths registered classified by cause and age group, July - September 2011**

Cause of Death	65 COD Code	ICD-10 Code	Total Males	Age Group										
				Under 1	1-4	5-14	15-24	25-34	35-44	45-54	55-64	65-74	75-84	85 and over
<b>Total Male Deaths</b>	<b>0</b>	<b>A00-Y89</b>	<b>3,575</b>	<b>40</b>	<b>4</b>	<b>9</b>	<b>60</b>	<b>80</b>	<b>111</b>	<b>255</b>	<b>457</b>	<b>750</b>	<b>1,084</b>	<b>725</b>
<b>Infectious and parasitic diseases:-</b>	<b>1</b>	<b>A00-B99</b>	<b>35</b>	<b>4</b>	<b>0</b>	<b>0</b>	<b>0</b>	<b>3</b>	<b>1</b>	<b>8</b>	<b>4</b>	<b>4</b>	<b>5</b>	<b>6</b>
Tuberculosis	2	A15-A19,B90	4	0	0	0	0	0	1	0	0	0	1	2
Meningococcal infection	3	A39	0	0	0	0	0	0	0	0	0	0	0	0
AIDS (HIV Disease)	4	B20-B24	1	0	0	0	0	1	0	0	0	0	0	0
Viral Hepatitis	5	B15-B19	11	0	0	0	0	2	0	8	1	0	0	0
Other infectious and parasitic diseases			19	4	0	0	0	0	0	0	3	4	4	4
<b>Neoplasms</b>	<b>6</b>	<b>C00-D48</b>	<b>1,193</b>	<b>1</b>	<b>0</b>	<b>3</b>	<b>6</b>	<b>4</b>	<b>11</b>	<b>67</b>	<b>216</b>	<b>324</b>	<b>385</b>	<b>176</b>
<b>Malignant Neoplasms of the:-</b>	<b>7</b>	<b>C00-C97</b>	<b>1,169</b>	<b>1</b>	<b>0</b>	<b>3</b>	<b>6</b>	<b>4</b>	<b>10</b>	<b>67</b>	<b>212</b>	<b>316</b>	<b>377</b>	<b>173</b>
Lip, oral cavity, pharynx	8	C00-C14	34	0	0	0	0	0	0	4	10	10	6	4
Oesophagus	9	C15	51	0	0	0	0	0	0	3	13	18	12	5
Stomach	10	C16	54	0	0	0	1	0	1	3	10	14	17	8
Colon	11	C18	76	0	0	0	0	0	0	2	11	16	32	15
Rectum and anus	12	C19-C21	87	0	0	0	0	0	1	1	15	25	31	14
Liver and the intrahepatic bile ducts	13	C22	29	0	0	0	0	0	1	3	5	10	8	2
Pancreas	14	C25	69	0	0	0	0	0	0	11	14	21	20	3
Larynx and trachea/bronchus /lung	15	C32-C34	292	0	0	0	0	1	0	15	59	99	89	29
Skin	16	C43	25	0	0	0	0	0	1	3	8	6	5	2
Breast	17	C50	2	0	0	0	0	0	0	0	0	1	1	0
Cervix uteri	18	C53	0	0	0	0	0	0	0	0	0	0	0	0
Other parts of uterus	19	C54-C55	0	0	0	0	0	0	0	0	0	0	0	0
Ovary	20	C56	0	0	0	0	0	0	0	0	0	0	0	0
Prostate	21	C61	131	0	0	0	0	0	0	0	7	25	59	40
Kidney	22	C64	37	0	0	0	0	0	0	3	11	6	7	10
Bladder	23	C67	38	0	0	1	0	0	0	1	3	6	17	10
Lymph/haematopoietic tissue	24	C81-C96	103	0	0	0	2	1	3	4	18	28	32	15
Other malignant neoplasms			141	1	0	2	3	2	3	14	28	31	41	16
<b>Diseases of the blood and blood-forming organs, immunological disorders</b>	<b>25</b>	<b>D50-D89</b>	<b>4</b>	<b>0</b>	<b>0</b>	<b>0</b>	<b>0</b>	<b>1</b>	<b>0</b>	<b>1</b>	<b>0</b>	<b>0</b>	<b>2</b>	<b>0</b>
<b>Endocrine, Nutritional and metabolic diseases</b>	<b>26</b>	<b>E00-E90</b>	<b>75</b>	<b>2</b>	<b>0</b>	<b>0</b>	<b>2</b>	<b>2</b>	<b>3</b>	<b>0</b>	<b>7</b>	<b>15</b>	<b>24</b>	<b>20</b>
Diabetes mellitus	27	E10-E14	63	0	0	0	1	2	1	0	6	14	21	18
<b>Mental and behavioural disorders</b>	<b>28</b>	<b>F00-F99</b>	<b>62</b>	<b>0</b>	<b>0</b>	<b>0</b>	<b>0</b>	<b>0</b>	<b>0</b>	<b>0</b>	<b>3</b>	<b>8</b>	<b>29</b>	<b>22</b>
Alcohol abuse (including alcoholic psychosis)	29	F10	3	0	0	0	0	0	0	0	1	2	0	0
Drug dependence, toxicomania	30	F11-F16,F18-F19	0	0	0	0	0	0	0	0	0	0	0	0
<b>Diseases of the nervous system and the sense organs</b>	<b>31</b>	<b>G00-H95</b>	<b>110</b>	<b>1</b>	<b>0</b>	<b>2</b>	<b>0</b>	<b>2</b>	<b>6</b>	<b>7</b>	<b>12</b>	<b>19</b>	<b>38</b>	<b>23</b>
Meningitis	32	G00-G03	0	0	0	0	0	0	0	0	0	0	0	0
<b>Diseases of the Circulatory System:-</b>	<b>33</b>	<b>I00-I99</b>	<b>1,144</b>	<b>0</b>	<b>0</b>	<b>1</b>	<b>1</b>	<b>4</b>	<b>22</b>	<b>74</b>	<b>120</b>	<b>262</b>	<b>370</b>	<b>290</b>
Ischaemic heart disease	34	I20-I25	682	0	0	0	0	1	12	53	90	167	210	149
of which: (Acute myocardial infarction)		/I21	259	0	0	0	0	0	7	18	18	54	92	70
Other heart disease	35	I30-I33,I39-I52	142	0	0	1	0	1	5	11	12	18	39	55
Cerebrovascular disease	36	I60-I69	192	0	0	0	1	1	4	7	9	36	72	62
Other diseases of circulatory system			128	0	0	0	0	1	1	3	9	41	49	24



**Table 16 Female deaths registered classified by cause and age group, July - September 2011**

Cause of Death	65 COD Code	ICD-10 Code	Total Females	Age Group										85 and over
				Under 1	1-4	5-14	15-24	25-34	35-44	45-54	55-64	65-74	75-84	
<b>Total Female Deaths</b>	<b>0</b>	<b>A00-Y89</b>	<b>3,336</b>	<b>25</b>	<b>4</b>	<b>3</b>	<b>27</b>	<b>30</b>	<b>60</b>	<b>144</b>	<b>299</b>	<b>478</b>	<b>952</b>	<b>1,314</b>
<b>Infectious and parasitic diseases:-</b>														
Tuberculosis	1	A00-B99	27	0	0	0	0	0	0	4	1	0	9	13
Meningococcal infection	2	A15-A19,B90	4	0	0	0	0	0	0	0	0	0	0	0
AIDS (HIV Disease)	3	A39	0	0	0	0	0	0	0	0	0	0	0	0
Virial Hepatitis	4	B20-B24	0	0	0	0	0	0	0	0	0	0	0	0
Other infectious and parasitic diseases	5	B15-B19	1	0	0	0	0	0	0	1	0	0	0	0
			22	0	0	0	0	0	0	2	1	0	6	13
<b>Neoplasms</b>	<b>6</b>	<b>C00-D48</b>	<b>1,025</b>	<b>0</b>	<b>0</b>	<b>0</b>	<b>7</b>	<b>8</b>	<b>32</b>	<b>66</b>	<b>172</b>	<b>247</b>	<b>283</b>	<b>210</b>
<b>Malignant Neoplasms of the:-</b>														
Lip, oral cavity, pharynx	7	C00-C97	994	0	0	0	6	8	31	66	171	242	273	197
Oesophagus	8	C00-C14	13	0	0	0	0	0	1	2	0	6	2	2
Stomach	9	C15	26	0	0	0	0	0	0	1	0	5	13	7
Colon	10	C16	30	0	0	0	0	0	1	2	0	4	11	11
Rectum and anus	11	C18	53	0	0	0	0	0	1	1	5	17	15	14
Liver and the intrahepatic bile ducts	12	C19-C21	53	0	0	0	0	0	2	3	9	10	17	12
Pancreas	13	C22	31	0	0	0	0	0	1	4	3	5	13	5
Larynx and trachea/bronchus /lung	14	C25	56	0	0	0	0	0	0	3	3	17	19	14
Skin	15	C32-C34	191	0	0	0	0	0	2	18	45	50	53	23
Breast	16	C43	20	0	0	0	1	1	1	2	4	3	5	3
Cervix uteri	17	C50	174	0	0	0	0	1	9	14	37	45	30	38
Other parts of uterus	18	C53	21	0	0	0	0	2	6	2	6	3	1	1
Ovary	19	C54-C55	22	0	0	0	0	0	0	1	3	7	9	2
Prostate	20	C61	73	0	0	0	1	0	1	2	19	20	22	8
Kidney	21	C64	13	0	0	0	0	0	0	0	0	0	0	0
Bladder	22	C67	25	0	0	0	0	0	1	0	3	5	10	9
Lymph/haematopoietic tissue	23	C81-C96	71	0	0	0	1	0	1	3	10	14	21	21
Other malignant neoplasms	24		122	0	0	0	3	4	4	7	23	28	28	25
<b>Diseases of the blood and blood-forming organs, immunological disorders</b>														
<b>Endocrine, Nutritional and metabolic diseases</b>	<b>25</b>	<b>D50-D89</b>	<b>10</b>	<b>0</b>	<b>0</b>	<b>0</b>	<b>0</b>	<b>0</b>	<b>0</b>	<b>0</b>	<b>3</b>	<b>0</b>	<b>2</b>	<b>5</b>
Diabetes mellitus	26	E00-E90	65	0	0	0	2	1	0	1	2	4	28	27
Alcohol abuse (including alcoholic psychosis)	27	E10-E14	48	0	0	0	1	0	0	0	2	3	20	22
Drug dependence, toxicomania	28	F00-F99	124	0	1	0	0	0	0	1	3	9	28	82
<b>Mental and behavioural disorders</b>														
Alcohol abuse (including alcoholic psychosis)	29	F10	2	0	0	0	0	0	0	1	1	0	0	0
Drug dependence, toxicomania	30	F11-F16,F18-F19	0	0	0	0	0	0	0	0	0	0	0	0
<b>Diseases of the nervous system and the sense organs</b>														
Meningitis	31	G00-H95	140	0	0	0	2	3	2	7	7	11	46	62
Ischaemic heart disease	32	G00-G03	1	0	0	0	0	0	0	0	1	0	0	0
Other heart disease	33	I00-I99	1,121	1	0	0	0	3	6	26	49	106	348	582
Cerebrovascular disease	34	I20-I25	519	0	0	0	0	0	2	8	23	53	179	254
Other diseases of circulatory system	35	I30-I33,I39-I52	210	0	0	0	0	0	0	2	9	24	68	107
Other diseases of circulatory system	36	I60-I69	144	1	0	0	0	0	1	3	3	10	35	91
			286	0	0	0	0	2	3	8	12	26	91	144
			172	0	0	0	0	1	0	7	11	17	43	93



**Table 17 Infant and neonatal mortality by area of residence of deceased,  
July - September 2011**

Area of residence	Infant mortality		Neonatal mortality	
	Number	Rate	Number	Rate
<b>STATE</b>	<b>65</b>	<b>3.4</b>	<b>41</b>	<b>2.1</b>
<b>LEINSTER</b>	<b>29</b>	<b>2.6</b>	<b>17</b>	<b>1.6</b>
Carlow	1	4.2	0	0.0
Dublin City	4	2.0	2	1.0
South Dublin	4	3.1	3	2.3
Fingal	4	2.7	2	1.4
Dun Laoghaire Rathdown	1	1.4	1	1.4
Kildare	6	6.0	3	3.0
Kilkenny	1	2.6	1	2.6
Laois	1	3.0	0	0.0
Longford	0	0.0	0	0.0
Louth	1	2.0	0	0.0
Meath	1	1.1	1	1.1
Offaly	2	5.6	1	2.8
Westmeath	1	2.9	1	2.9
Wexford	0	0.0	0	0.0
Wicklow	2	3.8	2	3.8
<b>MUNSTER</b>	<b>22</b>	<b>4.3</b>	<b>13</b>	<b>2.5</b>
Clare	3	6.4	2	4.3
Cork City	2	4.9	1	2.4
Cork County	5	2.9	3	1.7
Kerry	5	10.0	3	6.0
Limerick City	0	0.0	0	0.0
Limerick County	5	8.1	3	4.9
North Tipperary	0	0.0	0	0.0
South Tipperary	0	0.0	0	0.0
Waterford City	1	4.4	1	4.4
Waterford County	1	3.9	0	0.0
<b>CONNACHT</b>	<b>12</b>	<b>5.9</b>	<b>9</b>	<b>4.4</b>
Galway City	2	7.4	1	3.7
Galway County	4	5.3	3	4.0
Leitrim	3	28.3	3	28.3
Mayo	0	0.0	0	0.0
Roscommon	1	4.5	1	4.5
Sligo	2	8.3	1	4.1
<b>ULSTER (PART OF)</b>	<b>2</b>	<b>1.7</b>	<b>2</b>	<b>1.7</b>
Cavan	1	2.9	1	2.9
Donegal	0	0.0	0	0.0
Monaghan	1	4.1	1	4.1
<b>REGIONAL AUTHORITIES:</b>				
Border	8	4.0	6	3.0
Midland	4	3.3	2	1.7
West	7	4.2	5	3.0
Dublin	13	2.4	8	1.4
Mid-East	9	4.0	6	2.6
Mid-West	8	4.9	5	3.1
South-East	4	1.7	2	0.9
South-West	12	4.6	7	2.7

Infant mortality rates: Deaths of infants under one year per 1,000 live births, classified by area of residence of mother.

Neonatal mortality rates: Deaths of infants under 28 days per 1,000 live births, classified by area of residence of mother.

Infant and neonatal mortality rates in some areas, based on small numbers are subject to considerable fluctuation and caution should be exercised in their interpretation.

## Background Notes

### Methodology

All figures in this report are classified by quarter of registration. Delay in the registration of some births, deaths and marriages result in them being included in a later period in these quarterly reports.

### Changes in methodology

The extension of the Limerick City boundary, which came into operation on 1st March 2008, has been taken into account in the compilation of the statistics from the Second Quarter of 2008. As a result, data for Limerick City and County are not directly comparable with any quarter prior to the Second Quarter 2008.

This publication continues with the 3 major changes in the methods by which mortality statistics are compiled. These changes were introduced in the Vital Statistics First Quarter 2007 publication.

- 1) Underlying Cause of Death is classified according to International Classification of Diseases, Version 10 (ICD10) instead of to International Classification of Diseases, Version 9 (ICD9). In addition, this and future publications will incorporate certain official updates to ICD-10. In particular, mental and behavioural disorders due to psychoactive substance use (F10-F19), with mention of intestinal infectious diseases (A00-A09), accidental, intentional self and undetermined intent poisoning by and exposure to noxious substances (X40-X49, X60-X69, Y10-Y19) or assault by chemical or noxious substance (X85-X90), are now coded to the latter.

<http://www.who.int/classifications/icd/icd10updates/en/index.html>

- 2) Deaths where there was not an inquest have been coded using the automated coding system developed by the U.S National Centre for Health Statistics (NCHS). Previously the Underlying Cause of Death was chosen manually for all deaths.
- 3) All deaths registered in the Quarter have been included in the statistics, in some cases with a provisional cause of death. Previously the practice was not to include deaths in the quarterly statistics until the cause of death had been definitely established.

Because of these changes, caution should be taken in directly comparing these mortality statistics with those of previous quarters. Many countries have found that moving to ICD10 does affect certain specific categories of causes of death. In particular, a significant drop in the number of deaths attributed to pneumonia and bronchopneumonia has been observed in some countries after moving to ICD10. These deaths were instead assigned to other conditions included on the death certificate.

The effect of the third change above has been to increase the number of deaths in our statistics as compared with previous years. Statistics for deaths due to external causes are particularly affected by this change. The previous method meant that some deaths were included in a later quarter of the year from when they had been registered, because of the delay involved in establishing a definite cause of death.

### Revised figures

This report contains upward revisions to previously published figures for births registered in quarter 3 of 2008, quarter 1 of 2009 and 2010, and also for the previously published numbers for deaths registered in quarter 1 of 2010 and 2011. The natural increase and totals for these years were also revised. These revisions were first published in the Vital Statistics Second Quarter 2011 report.

## Glossary of terms

### **NUTS III Regional Authority areas**

Border, Midland, West, Dublin, Mid-East, Mid-West, South-East, South-West

Border: Cavan, Donegal, Leitrim, Louth, Monaghan, Sligo.

Midland: Laois, Longford, Offaly, Westmeath.

West: Galway City, Galway County, Mayo, Roscommon.

Dublin: Dublin City, South Dublin, Fingal, Dun Laoghaire-Rathdown.

Mid-East: Kildare, Meath, Wicklow.

Mid-West: Clare, Limerick City, Limerick County, North Tipperary.

South-East: Carlow, Kilkenny, South Tipperary, Waterford City, Waterford County, Wexford.

South-West: Cork City, Cork County, Kerry.

## **Appendix**

**Causes of death Eurostat shortlist (August 1998)**

Nr	Disease or external cause	ICD-9 Code	ICD-10 Code
00	All causes of death	001-E999	A00-Y89
01	Infectious and Parasitic Diseases:-	001-139,279.8	A00-B99
02	Tuberculosis	010-018,137	A15-A19,B90
03	Meningococcal Infection	036	A39
04	AIDS (HIV Disease)	042-044,279.8	B20-B24
05	Viral Hepatitis	070	B15-B19
	other Infectious and Parasitic Diseases	Rem (001-139)	Rem (A00-B99)
06	Neoplasms	140-239	C00-D48
07	Malignant Neoplasms of the:-	140-208	C00-C97
08	Lip, Oral Cavity, Pharynx	140-149	C00-C14
09	Oesophagus	150	C15
10	Stomach	151	C16
11	Colon	153	C18
12	Rectum and Anus	154	C19-C20-C21
13	Liver and the Intrahepatic Bile Ducts	155	C22
14	Pancreas	157	C25
15	Larynx and Trachea/Bronchus/Lung	161-162	C32-C34
16	Skin	172	C43
17	Breast	174-175	C50
18	Cervix Uteri	180	C53
19	Other Parts of the Uterus	179,182	C54-C55
20	Ovary	183.0	C56
21	Prostate	185	C61
22	Kidney	189.0	C64
23	Bladder	188	C67
24	Lymph/Haematopoietic Tissue	200-208	C81-C96
	other Malignant Neoplasms	Rem (140-208)	Rem. (C00-C97)
25	Diseases of the Blood and Blood-forming Organs, Immunological disorders <sup>1</sup>	279-289	D50-D89
26	Endocrine, Nutritional and Metabolic Diseases	240-278	E00-E90
27	Diabetes Mellitus	250	E10-E14
28	Mental and Behavioural Disorders	290-319	F00-F99
29	Alcohol abuse (including Alcoholic Psychosis)	291,303	F10
30	Drug Dependence, Toxicomania	304-305	F11-F16,F18-F19
31	Diseases of the Nervous System and the Sense Organs	320-389	G00-H95
32	Meningitis	320-322	G00-G03
33	Diseases of the Circulatory System:-	390-459	I00-I99
34	Ischaemic Heart Disease	410-414	I20-I25
	<i>(Acute Myocardial Infarction)</i>	410	I21
35	Other Heart Disease	420-423,425-429	I30-I33,I39-I52
36	Cerebrovascular Disease	430-438	I60-I69
	other Diseases of the Circulatory System	Rem (390-459)	Rem. (I00-I99)
37	Diseases of the Respiratory System	460-519	J00-J99
38	Influenza	487	J10-J11
39	Pneumonia	480-486	J12-J18
40	Chronic Lower Respiratory Disease	490-494,496	J40-J47
41	Asthma	493	J45-J46
	other Diseases of the Respiratory System	Rem (460-519)	Rem. (J00-J99)
42	Diseases of the Digestive System	520-579	K00-K93
43	Ulcer of Stomach, Duodenum and Jejunum	531-534	K25-K28
44	Chronic Liver Disease	571.0-571.9	K70,K73-K74
	other Diseases of the Digestive System	Rem (520-579)	Rem. (K00-K93)
45	Diseases of the Skin and Subcutaneous Tissue	680-709	L00-L99
46	Diseases of the Musculoskeletal System/Connective Tissue	710-739	M00-M99
47	Rheumatoid Arthritis and Osteoarthritis	714-715	M05-M06,M15-M19
48	Diseases of the Genitourinary System	580-629	N00-N99
49	Diseases of the Kidney and Ureter	580-594	N00-N29
50	Complications of Pregnancy, Childbirth and Puerperium	630-676	O00-O99
51	Certain Conditions Originating in the Perinatal Period (stillbirths not included)	760-779	P00-P96
52	Congenital Malformations and Chromosomal Abnormalities	740-759	Q00-Q99
53	Congenital malformations of the Nervous System	740-742	Q00-Q07
54	Congenital malformations of the Circulatory System	745-747	Q20-Q28
55	Symptoms, Signs, Abnormal Findings, Ill-defined Causes	780-799	R00-R99
56	Sudden Infant Death Syndrome	798.0	R95
57	Unknown and Unspecified Causes	798.1-9,799	R96-R99
	Injury and Poisoning	800-999	S00-T98
58	External Causes of Injury and Poisoning (included in the Foregoing)	E800-E999	V01-Y89
59	Accidents	E800-E929	V01-X59
60	Transport Accidents	E800-E848	V01-V99
	Road transport Accidents	E810-E829, E929.0	V01-V80,V87,V89,Y85
	Motor vehicle transport Accidents	E810-E819	
61	Accidental Falls	E880-E888	W00-W19
62	Accidental Poisoning	E850-E869	X40-X49
	other accidents	Rem (E800-E929)	Rem (V01-X59)
63	Suicide and Intentional Self Harm	E950-E959	X60-X84
64	Homicide/Assault	E960-E969	X85-Y09
65	Cause Undetermined	E980-E989	Y10-Y34
	other External Causes	Rem (E930-E999)	

<sup>1</sup> 279.8 not included

**Estimated Population classified by Sex and Age Group, 2006 - 2011**
*thousands*

Sex and Age Group	Persons in April of each year					
	2006 <sup>1</sup>	2007 <sup>2</sup>	2008 <sup>2</sup>	2009 <sup>2</sup>	2010 <sup>2</sup>	2011 <sup>1</sup>
<b>Total Persons</b>	<b>4,239.8</b>	<b>4,339.0</b>	<b>4,422.1</b>	<b>4,459.3</b>	<b>4,470.7</b>	<b>4,588.3</b>
0 - 4 years	302.3	312.3	327.9	341.6	353.8	356.3
5 - 9 "	288.3	295.9	303.4	308.0	311.6	320.8
10 - 14 "	273.9	275.6	281.0	288.1	293.6	302.5
15 - 19 "	290.3	286.0	283.9	278.6	273.3	283.0
20 - 24 "	342.5	347.8	334.0	304.8	275.7	297.2
25 - 29 "	373.1	405.1	416.7	413.4	392.2	361.1
30 - 34 "	349.4	358.0	366.9	371.4	378.2	393.9
35 - 39 "	322.1	331.7	342.1	348.0	349.0	364.3
40 - 44 "	301.3	305.8	310.2	312.5	315.3	330.8
45 - 49 "	274.7	279.8	286.1	293.5	299.1	305.2
50 - 54 "	247.1	252.6	257.2	261.7	266.8	274.4
55 - 59 "	225.3	227.4	232.0	235.4	239.2	244.5
60 - 64 "	181.7	190.5	199.2	207.5	213.2	218.8
65 - 69 "	143.4	143.5	148.8	155.3	162.2	173.6
70 - 74 "	119.2	119.2	120.8	123.2	125.7	131.2
75 - 79 "	92.5	92.1	93.6	95.2	96.7	102.0
80 - 84 "	64.9	65.4	65.2	65.9	66.8	70.1
85 years and over	48.0	50.3	53.2	55.4	58.1	58.4
<b>Total males</b>	<b>2,121.2</b>	<b>2,171.1</b>	<b>2,206.3</b>	<b>2,217.7</b>	<b>2,216.0</b>	<b>2,272.7</b>
0 - 4 years	154.6	160.5	168.2	175.3	181.5	182.1
5 - 9 "	148.0	151.3	154.9	157.6	159.7	164.0
10 - 14 "	140.5	141.3	144.1	147.7	150.4	155.1
15 - 19 "	148.2	145.4	144.6	141.8	139.2	144.3
20 - 24 "	172.8	175.0	165.7	148.6	133.3	146.6
25 - 29 "	189.3	204.7	209.4	204.6	191.4	173.7
30 - 34 "	177.5	182.6	185.3	186.0	187.5	194.8
35 - 39 "	163.8	169.1	174.0	175.6	174.7	182.2
40 - 44 "	151.4	153.6	155.7	157.5	158.8	166.3
45 - 49 "	138.0	140.6	143.4	147.0	149.5	151.5
50 - 54 "	124.6	127.1	129.2	131.5	133.8	136.7
55 - 59 "	113.9	114.9	117.0	118.5	120.1	122.1
60 - 64 "	91.6	96.0	100.4	104.3	106.9	109.9
65 - 69 "	70.9	71.3	73.6	76.9	80.2	86.3
70 - 74 "	56.5	56.6	57.5	58.7	60.3	63.5
75 - 79 "	40.1	40.6	41.8	42.9	43.7	46.6
80 - 84 "	24.7	25.0	25.0	25.9	26.5	28.4
85 years and over	14.8	15.5	16.6	17.5	18.6	18.5
<b>Total females</b>	<b>2,118.7</b>	<b>2,167.9</b>	<b>2,215.8</b>	<b>2,241.6</b>	<b>2,254.7</b>	<b>2,315.6</b>
0 - 4 years	147.7	151.8	159.7	166.4	172.3	174.3
5 - 9 "	140.3	144.6	148.5	150.5	151.9	156.7
10 - 14 "	133.4	134.2	136.9	140.4	143.2	147.4
15 - 19 "	142.0	140.6	139.3	136.8	134.2	138.8
20 - 24 "	169.7	172.8	168.3	156.1	142.4	150.6
25 - 29 "	183.8	200.4	207.3	208.8	200.8	187.4
30 - 34 "	171.9	175.3	181.6	185.4	190.7	199.2
35 - 39 "	158.3	162.5	168.1	172.4	174.2	182.0
40 - 44 "	149.9	152.2	154.5	155.0	156.5	164.5
45 - 49 "	136.8	139.3	142.8	146.5	149.6	153.7
50 - 54 "	122.5	125.5	128.0	130.2	133.0	137.6
55 - 59 "	111.4	112.5	115.0	116.9	119.1	122.4
60 - 64 "	90.2	94.6	98.8	103.2	106.4	108.9
65 - 69 "	72.5	72.2	75.2	78.4	82.0	87.3
70 - 74 "	62.6	62.6	63.3	64.5	65.4	67.7
75 - 79 "	52.3	51.5	51.8	52.4	53.0	55.4
80 - 84 "	40.2	40.4	40.1	40.0	40.2	41.7
85 years and over	33.2	34.8	36.6	37.9	39.5	39.9

<sup>1</sup> De Facto

<sup>2</sup> Preliminary

