

Education

5

Introductory text	97
Table 5.1 Persons in full-time education by level	101
Graph <i>Persons in full-time education by level</i>	101
Table 5.2 Persons receiving full-time education and estimated participation rates for ages 15-24, 2002/03	102
Graph <i>Full-time education participation rate by sex for ages 15-24, 2002/03</i>	102
Table 5.3 Voted expenditure by sector for financial year ended 31 December 2002	103
Table 5.4 Pupils in first level schools classified by standard	103
Table 5.5 Teaching posts in first level schools on 30 June	104
Table 5.6 Pupils in first level schools (ordinary classes) by sex category of schools	104
Table 5.7 Pupils and teachers in first level schools by class size, 2002/03	105
Table 5.8 Second level pupils classified by type of school	105
Graph <i>Enrolments in second level schools – % change since 1998/99</i>	105
Table 5.9 Teachers in secondary, vocational and community schools	106
Table 5.10 Second level state examination candidates	106
Graph <i>Pupil / Teacher ratio</i>	106
Table 5.11 Pupils in all second level schools by Leaving Certificate subject, 2003	107

Table 5.12	Leaving Certificate candidates taking selected subjects at ordinary level	108
Graph	<i>All Leaving Certificate students taking selected subjects, 2003</i>	108
Table 5.13	Leaving Certificate candidates taking selected subjects at higher level	109
Table 5.14	Leaving Certificate ordinary level grades for most popular subjects, 2003	110
Table 5.15	Leaving Certificate higher level grades for most popular subjects, 2003	110
Table 5.16	Educational institutions	111
Table 5.17	Ages of children in special schools for young offenders, 2002	111
Graph	<i>Grade distribution of selected Leaving Certificate higher level subjects, 2003</i>	111
Table 5.18	Pupils conveyed and cost of school transport service scheme	112
Table 5.19	First time entrants to third level courses in all institutions, 2002/03	112

A background image of a classroom. At the top, there are alphabet cards for 'Nn', 'Oo', 'Pp', 'Qq', and 'Rr'. Below them, a child is writing 'AB' on a board. To the right, there are posters for 'Long Vowels' and 'The ABC's'. In the foreground, several children are standing, some with their hands raised. The image has a light green overlay.

5

Education

- The pupil/teacher ratio in second level schools fell from 15 in 1998/99 to 13 in 2002/03.
- 59% of new entrants to HEA institutions were female in 2002/03.
- At age 18, 73% of females and 57% of males were in full time education.
- In 2003, only 18% of first level school teachers were male.
- Secondary school enrolments declined by 11% in the 4 year period from 1998/99 but Vocational, Comprehensive and Community schools maintained their numbers.

Introduction

The statistics in this chapter have been obtained from the Department of Education and Science. The data include details of participation in and expenditure on first, second and third level education.

Persons in education

The numbers of students at first level reached 576,600 in 1985/86, but they have fallen substantially since then. The number at this level in 2002/03 records a slight increase over 2001/02 but represents only 78% of the figure recorded in 1985/86. In the case of second level students, the participation level rose strongly from 1965/66 until 1995/96, but then the fall in the birth rate in the early 1980s began to have an effect. Over the period 1965-2002, there was a growth of 563% in the third level student population. As compared with 1990/91, over 67,000 extra places were taken up in 2002/03.

In 2002/03 participation rates for males and females differed substantially over the age group 15-24. Only a slightly greater proportion of females were in full-time education at age 15. By the age of 18, 73% of females and 57% of males were in full time education. This can be partially explained by a greater male participation in the labour force for the 15-19 age cohort, 29% versus 23% for females (see Table 2.5).

Women formed 59% of new entrants to the HEA institutions (Universities and the Royal College of Surgeons in Ireland) in the year 2002/03, but formed only 46% of new entrants to the Institutes and colleges of Technology.

Table 5.1

The information in this table refers to all Aided Institutions and those Non-Aided/Private Institutions who made student returns to the Department.

Table 5.9

Only teachers paid from funds provided by the Department of Education and Science are included in this table.

Part-time teaching staff includes job-sharers, eligible part-time teachers and other part-time teachers.

The data in respect of Vocational schools relate to day courses only.

Table 5.11

The information in this table refers to the number of second level pupils taking individual subjects in the Leaving Certificate programme.

Table 5.12

The percentages in this table are the proportion of Leaving Certificate examination candidates (excluding Leaving Certificate Applied) who took a particular subject at ordinary level.

Table 5.13

The percentages in this table are the proportion of Leaving Certificate examination candidates (excluding Leaving Certificate Applied) who took a particular subject at higher level.

Table 5.1 Persons in full-time education by level

School year	Number		
	First level	Second level	Third level
1965/66	504,865	142,983	20,698
1970/71	520,129	197,142	24,496
1975/76	550,078	270,956	33,148
1980/81	568,364	300,601	41,928
1985/86	576,576	338,207	55,088
1990/91	552,528	345,941	69,988
1995/96	485,923	373,665	102,662
2000/01	444,782	349,274	126,300
2001/02	447,446	344,720	131,812
2002/03	448,754	343,596	137,323

Source: Department of Education and Science

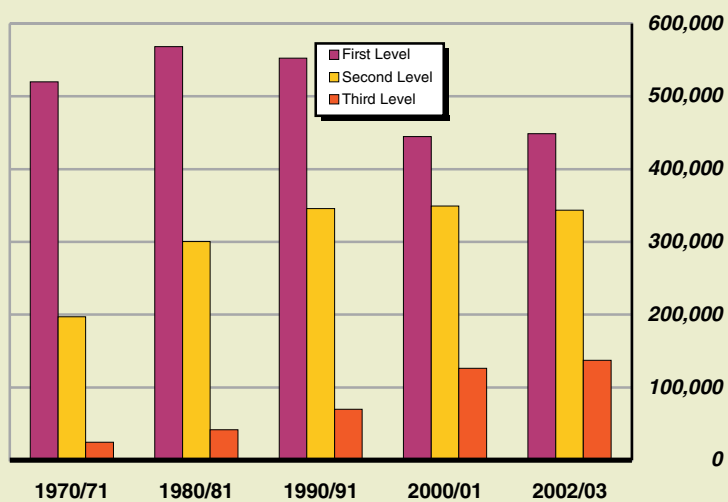
Persons in full-time education by level

Table 5.2 Persons receiving full-time education and estimated participation rates for ages 15-24, 2002/03

Age	In full-time education			As % of population	
	Male	Female	Total	Male	Female
15	29,686	29,488	59,174	97.5	100.0
16	28,661	29,386	58,047	91.0	99.5
17	24,492	26,768	51,260	77.9	88.2
18	18,019	21,910	39,929	56.5	72.8
19	14,128	18,897	33,025	44.5	61.5
20	12,953	16,776	29,729	39.2	51.6
21	10,355	12,644	22,999	30.6	37.5
22	7,004	7,696	14,700	20.5	22.5
23	3,898	4,028	7,926	11.2	11.9
24	2,434	2,741	5,175	7.5	8.2

Source: Department of Education and Science

Full-time education participation rate by sex for ages 15-24, 2002/03

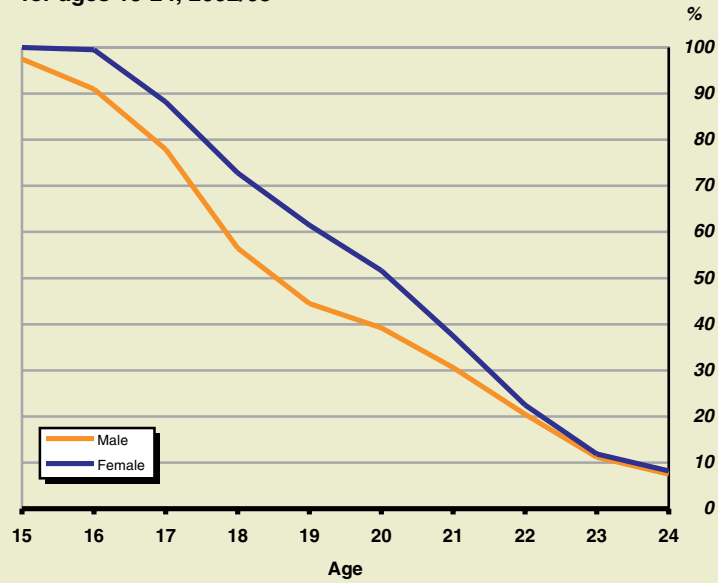


Table 5.3 Voted expenditure by sector for financial year ended 31 December 2002

	€m		
Sector	Current	Capital	Total
First level education	1,556.8	180.3	1,737.1
Second level education	1,759.2	171.3	1,930.5
Third level education	1,222.0	183.9	1,405.9
Office of the Minister for Education	313.3	3.6	316.9
Gross expenditure	4,851.3	539.2	5,390.5
Appropriations In Aid	189.7	–	189.7
Net expenditure	4,661.6	539.2	5,200.8

Source: Department of Education and Science

Table 5.4 Pupils in first level schools classified by standard

	Number					
Standard	1997/98	1998/99	1999/2000	2000/01	2001/02	2002/03
Infants standard	107,496	104,123	103,133	103,832	107,500	111,355
First standard	54,558	53,892	51,659	50,818	51,138	52,166
Second standard	53,982	54,493	53,851	51,766	50,927	51,243
Third standard	53,973	53,926	54,505	54,033	51,960	51,226
Fourth standard	57,258	53,890	53,828	54,606	54,079	52,068
Fifth standard	59,140	57,292	54,048	54,063	54,916	54,476
Sixth standard	58,965	58,346	56,647	53,595	53,760	54,616
Other standard	987	773	668	631	427	379
Special schools	7,409	7,386	7,228	7,124	6,982	6,807
Pupils with special needs in ordinary first level schools	7,077	8,412	8,743	9,092	9,376	9,384
Private Primary Schools	5,924	5,312	6,842	5,222	6,381	5,034
Total pupils	466,769	457,845	451,152	444,782	447,446	448,754

Source: Department of Education and Science

TABLE 5.3

TABLE 5.4

Table 5.5 Teaching posts in first level schools on 30 June

	<i>Number</i>						
Sex	1997	1998	1999	2000	2001	2002	2003
Male	4,568	4,522	4,498	4,370	4,503	4,536	4,490
Female	16,467	16,578	17,002	17,480	18,347	19,399	20,210
Total	21,035	21,100	21,500	21,850	22,850	23,935	24,700

Source: Department of Education and Science

Table 5.6 Pupils in first level schools (ordinary classes) by sex category of schools

	<i>Number</i>					
Sex category of school	1997/98	1998/99	1999/2000	2000/01	2001/02	2002/03
Single sex	104,854	100,248	97,953	95,379	93,360	92,208
Junior schools	4,012	3,889	3,993	3,920	3,970	4,005
Senior schools	27,472	25,609	24,116	22,550	21,856	21,402
All-through schools	73,370	70,750	69,844	68,909	67,534	66,801
Single sex with mixed junior standards	39,628	38,039	34,688	32,123	31,738	31,310
Mixed	301,877	298,448	295,698	295,842	299,609	304,011
Junior schools	25,553	23,957	22,893	21,849	22,066	22,389
Senior schools	19,509	18,734	18,006	17,469	16,922	16,714
All-through schools	256,815	255,757	254,799	256,524	260,621	264,908
Total	446,359	436,735	428,339	423,344	424,707	427,529

Source: Department of Education and Science

Table 5.7 Pupils and teachers in first level schools by class size, 2002/03

Teaching teachers in school	Number of schools	Class size				Total
		0-19	20-29	30-39	40 and over	
		Number				
1	21	201	25	-	42	268
2	590	14,086	7,571	337	-	21,994
3	456	11,662	23,123	2,477	-	37,262
4	372	6,968	32,770	6,110	40	45,888
5	324	4,635	21,770	7,017	-	33,422
6	231	2,690	17,562	6,762	42	27,056
7	146	2,780	15,054	6,528	81	24,443
8	93	2,970	20,839	10,210	41	34,060
9	73	2,517	12,099	7,453	40	22,109
10 and over	849	16,985	100,575	63,169	298	181,027
Total	3,155	65,494	251,388	110,063	584	427,529

Source: Department of Education and Science

TABLE 5.7

TABLE 5.8

Table 5.8 Second level pupils classified by type of school

Category	Number					
	1997/98	1998/99	1999/2000	2000/01	2001/02	2002/03
Secondary	217,303	211,369	203,418	197,376	192,436	189,093
Vocational	97,309	97,998	98,451	96,842	96,467	98,233
Community and Comprehensive	53,548	52,684	51,991	51,166	51,175	51,905
Total	368,160	362,051	353,860	345,384	340,078	339,231

Source: Department of Education and Science

Enrolments in second level schools - % change since 1998/99

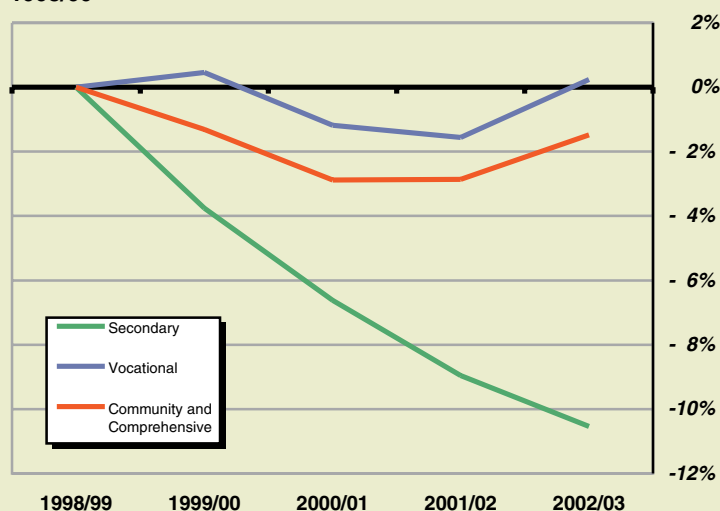


Table 5.9 Teachers in secondary, vocational and community schools

Number

Category	1997/98	1998/99	1999/2000	2000/01	2001/02	2002/03
Secondary						
Full-time	12,655	12,180	12,418	12,476	12,424	12,447
Full-time equivalent of part-time	604	1,043	1,175	1,361	1,582	1,680
Vocational						
Full-time	5,290	5,497	5,625	5,788	5,685	5,933
Full-time equivalent of part-time	1,226	1,105	1,156	1,381	1,607	1,417
Community and Comprehensive						
Full-time	3,121	3,129	3,058	3,171	3,410	3,682
Full-time equivalent of part-time	414	481	534	434	479	533
Total						
Full-time	21,066	20,806	21,101	21,435	21,519	22,062
Full-time equivalent of part-time	2,244	2,629	2,865	3,176	3,668	3,630

Source: Department of Education and Science

TABLE 5.9

TABLE 5.10

Table 5.10 Second level state examination candidates

Number

Examination	1997	1998	1999	2000	2001	2002	2003
Junior Certificate	67,053	65,608	62,659	61,470	60,124	60,152	59,340
Male	33,740	33,137	31,773	31,302	30,308	30,150	29,855
Female	33,313	32,471	30,886	30,168	29,816	30,002	29,485
Leaving Certificate	63,234	65,922	64,936	63,419	59,537	58,400	59,536
Male	29,995	31,333	30,811	30,138	28,176	27,716	28,532
Female	33,239	34,589	34,125	33,281	31,361	30,684	31,004
All examination candidates	130,287	131,530	127,595	124,889	119,661	118,552	118,876
Male	63,735	64,470	62,584	61,440	58,484	57,866	58,387
Female	66,552	67,060	65,011	63,449	61,177	60,686	60,489

Source: Department of Education and Science

Pupil / Teacher ratio

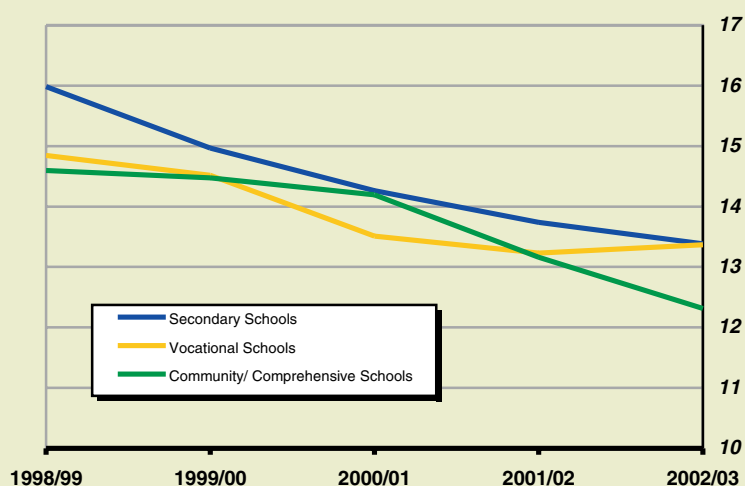


Table 5.11 Pupils in all second level schools by Leaving Certificate subject, 2003

Number

Subject	Number of pupils			% studying subject	
	Boys	Girls	Total	Boys	Girls
Irish	49,601	52,534	102,135	96	96
English	51,615	54,543	106,158	100	100
Latin	174	105	279	0	0
Greek	24	5	29	0	0
French	28,930	38,707	67,637	56	71
German	7,947	9,674	17,621	15	18
Italian	237	192	429	0	0
Spanish	1,402	2,287	3,689	3	4
History	13,661	10,428	24,089	26	19
Geography	29,632	26,708	56,340	57	49
Mathematics	51,665	54,515	106,180	100	99
Applied Maths	1,596	473	2,069	3	1
Physics	13,099	4,156	17,255	25	8
Chemistry	6,179	7,353	13,532	12	13
Physics and Chemistry	1,296	637	1,933	3	1
Agricultural Science	4,826	1,329	6,155	9	2
Biology	15,390	31,757	47,147	30	58
Agricultural Economics	99	34	133	0	0
Engineering	10,645	657	11,302	21	1
Technical Drawing	12,540	1,016	13,556	24	2
Construction Studies	18,157	1,307	19,464	35	2
Home Economics (S & S)	3,679	25,566	29,245	7	47
Home Economics (General)	94	142	236	0	0
Accounting	6,605	7,591	14,196	13	14
Business Studies	19,767	23,973	43,740	38	44
Economics	5,724	3,184	8,908	11	6
Economic History	112	75	187	0	0
Art (with Design option)	4,431	6,924	11,355	9	13
Art (with Craftwork option)	3,112	5,974	9,086	6	11
Physical Education	28,183	32,396	60,579	54	59
Classical Studies	564	522	1,086	1	1
Computer Studies	14,181	18,878	33,059	27	34
Keyboarding	40	31	71	0	0
Choir	347	4,249	4,596	1	8
Orchestra	4	71	75	0	0
Religious Education	44,582	47,670	92,252	86	87
Typewriting	182	393	575	0	1
Health Education	682	1,745	2,427	1	3
Speech and Drama	91	1,799	1,890	0	3
Music	1,692	5,926	7,618	3	11
Leaving Certificate Programme	51,828	54,805	106,633		

Source: Department of Education and Science

TABLE 5.11

Table 5.12 Leaving Certificate candidates taking selected subjects at ordinary level

Subject	1997	1998	1999	2000	2001	2002	2003
Mathematics	66	70	70	70	71	70	70
Irish	52	53	53	52	53	52	52
English	43	43	42	43	39	39	37
French	29	30	30	32	31	31	31
Biology	18	18	18	17	17	15	16
Geography	13	13	11	13	13	13	13
Business Studies	15	15	11	13	14	13	13
Mathematics (Alt/Ord)	10	9	9	10	9	10	10
Home Economics (S & S)	11	10	10	10	9	9	9
Irish (Foundation)	9	9	9	9	9	10	9
History	9	9	8	8	7	7	8
German	6	6	6	6	6	6	6
Technical Drawing	7	6	6	6	6	5	5
Art	5	5	5	5	5	5	5
Physics	5	5	5	5	5	5	5
Accounting	5	5	5	5	4	4	4
Construction Studies	4	4	4	4	4	4	4
Engineering	3	3	3	2	2	3	3
Economics	2	2	2	2	2	2	2
Chemistry	2	2	2	2	2	2	2
Agricultural Science	1	1	1	1	1	2	2
Spanish	1	1	1	1	1	1	1
Music	0	0	1	1	1	1	1
Physics and Chemistry	1	1	1	0	0	1	0

Source: Department of Education and Science

TABLE 5.12

All Leaving Certificate students taking selected subjects, 2003

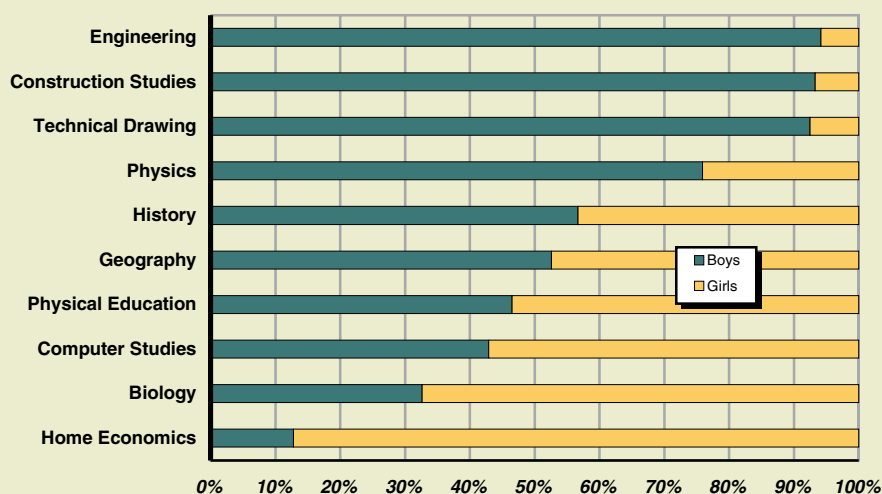


Table 5.13 Leaving Certificate candidates taking selected subjects at higher level

	%						
Subject	1997	1998	1999	2000	2001	2002	2003
English	48	53	53	53	55	57	58
Geography	30	33	36	37	38	38	39
Business Studies	20	23	28	29	29	29	28
Irish	25	28	27	28	28	27	27
French	26	27	29	28	28	27	27
Biology	28	30	28	27	26	25	25
Home Economics (S & S)	24	27	27	25	25	24	23
Mathematics	16	17	17	18	18	17	17
History	13	14	13	13	12	12	13
Art	11	11	11	11	11	12	12
Construction Studies	9	10	10	11	11	11	12
Physics	11	11	10	10	10	11	11
Chemistry	10	10	9	9	9	10	10
German	10	10	11	11	10	9	9
Accounting	9	9	10	9	9	8	8
Economics	6	6	6	6	7	7	7
Engineering	5	5	5	6	6	6	6
Technical Drawing	5	5	6	6	6	6	6
Music	0	0	4	5	5	6	6
Agricultural Science	3	3	3	4	4	4	4
Applied Mathematics	2	2	2	2	2	2	2
Spanish	1	2	2	1	2	2	2
Physics and Chemistry	1	1	2	1	1	1	1
Classical Studies	1	1	1	1	1	2	1

Source: Department of Education and Science

TABLE 5.13

Table 5.14 Leaving Certificate ordinary level grades for most popular subjects, 2003

Subject	Grade					%
	A	B	C	D	E or lower	
Mathematics	11	27	27	24	12	
Irish	4	39	38	16	4	
English	9	32	39	18	2	
French	1	22	43	28	6	
Biology	7	23	27	22	20	
Geography	7	30	36	21	6	
Business Studies	14	30	30	20	6	
Mathematics (Alt/Ord)	12	35	30	17	6	
Home Economics (S & S)	4	24	35	27	11	
Irish (Foundation)	5	32	42	19	2	
History	25	21	17	19	18	
German	4	34	33	20	9	
Technical Drawing	15	27	26	23	10	
Art	1	21	48	25	5	
Physics	12	31	27	19	11	
Accounting	22	30	20	14	14	
Construction Studies	1	21	44	26	8	
Engineering	3	21	40	28	8	
Economics	12	34	32	17	6	
Chemistry	15	36	28	15	7	

Source: Department of Education and Science

TABLE 5.14

TABLE 5.15

Table 5.15 Leaving Certificate higher level grades for most popular subjects, 2003

Subject	Grade					%
	A	B	C	D	E or lower	
English	10	27	40	22	1	
Geography	8	29	37	22	5	
Business Studies	10	30	32	22	6	
Irish	11	32	37	18	1	
French	9	26	39	24	2	
Biology	19	27	26	19	9	
Home Economics (S & S)	6	27	37	24	6	
Mathematics	13	30	33	20	4	
History	15	29	29	19	8	
Art	8	39	41	13	1	
Construction Studies	6	37	39	16	2	
Physics	18	24	24	23	11	
Chemistry	26	30	23	15	6	
German	12	31	36	19	2	
Accounting	21	35	22	15	7	
Economics	12	29	30	23	6	
Engineering	9	31	36	20	4	
Technical Drawing	14	31	30	20	5	
Music	18	56	23	2	0	
Agricultural Science	9	30	33	22	7	
Applied Mathematics	29	31	20	12	9	
Spanish	20	28	32	19	2	
Physics and Chemistry	19	26	28	19	8	
Classical Studies	7	27	33	22	11	

Source: Department of Education and Science

Table 5.16 Educational institutions

Level	Number					
	1989/1990	1994/95	1999/2000	2000/01	2001/02	2002/03
First level	3,428	3,387	3,340	3,323	3,329	3,318
Second level	838	809	782	780	775	769
Third level	50	55	56	54	55	55
Total	4,316	4,251	4,178	4,157	4,159	4,142
of which aided by the Department of Education and Science	4,204	4,126	4,080	4,072	4,067	4,063

Source: Department of Education and Science

Table 5.17 Ages of children in special schools for young offenders, 2002

Age	Number							
	Committed		On remand		Health Act		Total	
	Boys	Girls	Boys	Girls	Boys	Girls	Boys	Girls
12 and under	4	–	1	–	9	–	14	–
13	4	–	1	1	1	–	6	1
14	8	1	7	–	5	–	20	1
15	21	2	8	–	3	–	32	2
16	14	1	2	3	3	–	19	4
17 and over	2	–	–	–	–	–	2	–
Total	53	4	19	4	21	–	93	8

Source: Department of Education and Science

TABLE 5.16

TABLE 5.17

Grade distribution of selected Leaving Certificate higher level subjects, 2003

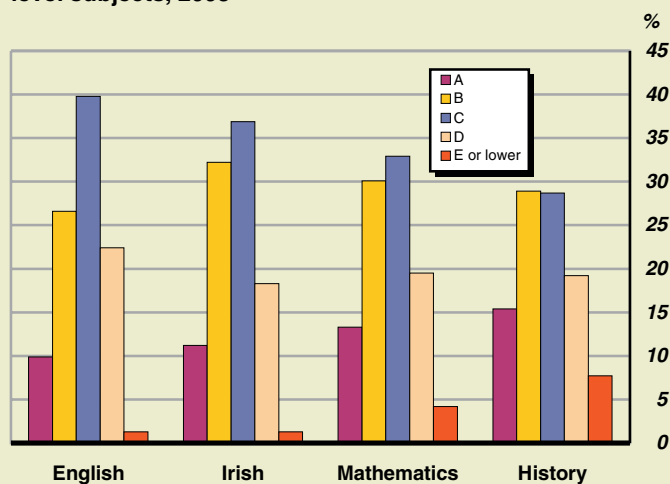


Table 5.18 Pupils conveyed and cost of school transport service scheme

Level	2000		2001	
	Pupils conveyed	Expenditure €m	Pupils conveyed	Expenditure €m
First level	49,424	33.7	53,238	43.0
Public scheduled services	1,796	0.6	1,752	0.4
Special school services	47,628	33.1	51,486	42.6
Second level	78,126	30.5	79,373	34.4
Public scheduled services	9,316	2.7	9,391	2.8
Special school services	68,810	27.9	69,982	31.7
Total	127,550	64.2	132,611	77.5

Source: Department of Education and Science

Table 5.19 First time entrants to third level courses in all institutions, 2002/03

Type of institution	Number		
	Male	Female	Total
HEA Institutions	6,951	10,144	17,095
IOT/Technological Sector	9,457	7,977	17,434
Other	1,529	1,629	3,158
Total	17,937	19,750	37,687

Source: Department of Education and Science

TABLE 5.18

TABLE 5.19

