

# Population

---

# 1

Introductory text	3
<b>Table 1.1</b> Population by province	7
<b>Graph</b> <i>Population by province</i>	7
<b>Table 1.2</b> Average annual births, deaths, natural increase and estimated net migration for each intercensal period	8
<b>Graph</b> <i>Components of population changes</i>	8
<b>Table 1.3</b> Population by province, county and city, 2002	9
<b>Table 1.4</b> Population by sex and age group for census years	10
<b>Table 1.5</b> Estimated population by sex and age group	11
<b>Table 1.6</b> Population of inhabited islands off the coast	12-13
<b>Table 1.7</b> Travellers by age group, sex and marital status, 2002	13
<b>Table 1.8</b> Males and females by age group and marital status, 2002	14
<b>Graph</b> <i>Population by age and sex, 2002</i>	14
<b>Table 1.9</b> Usually resident persons, males and females, classified by place of birth, 2002	15
<b>Table 1.10</b> Persons usually resident in each province and county, and present in the State on census night, classified by country of birth, 2002	16
<b>Table 1.11</b> Usually resident persons, males and females, classified by nationality, 2002	17
<b>Table 1.12</b> Persons aged one year and over, usually resident in each county, and present in the State on census night, classified by usual residence one year previously, 2002	18

<b>Table 1.13</b>	Population classified by religion in each province, county and city, 2002	19
<b>Table 1.14</b>	Irish speakers aged 3 years and over in each province, county and city, classified by frequency of speaking Irish, 2002	20
<b>Table 1.15</b>	Family units with two or more children in private households, classified by type of family unit, age group of youngest child and age group of eldest child, 2002	21
<b>Graph</b>	<i>Cumas ar Ghaeilge a labhairt</i>	21

# 1

## *Population*

- The population at the 2002 Census exceeded 3.9 million, the highest since 1871.
- The population of Dublin City and suburbs exceeds one million.
- The population is getting older – the average age was 35.1 years in 2002 compared with 34.1 years in 1996.
- The number of divorced persons increased from 9,800 to 35,000 between 1996 and 2002.
- Most people stay in the county of their birth.
- Non-Irish nationals make up 5.8 per cent of the population.

## **Introduction**

**T**his chapter contains a representative selection of tables on the population of the State. The figures are taken from Censuses of Population carried out since 1841. The tables selected give an insight into the historical evolution of the population, the factors affecting population change, the distribution of the population by geographic area and by the main demographic characteristics ie age, sex and marital status. The importance of migration in Irish population dynamics is underscored by the selection of tables dealing with place of birth and place of usual residence one year before the census. Religion and the Irish language are also covered.

Historical data for the period up to and including 2002 are taken from the various censuses and registrations of births and deaths. Detailed figures for intercensal years are taken from the annual series of population and migration estimates.

The first major census, using a household form, was the so-called Great Census of 1841. Censuses were subsequently taken at ten-year intervals up to 1911. The first census following the formation of the State was undertaken in 1926. This was followed by censuses in 1936 and 1946. Commencing with 1951, censuses have been taken every five years. The census planned for 1976 was cancelled at a late stage as a Government economy measure. However, the need for up-to-date population figures resulted in a census being specially undertaken in 1979 with a restricted number of questions. This was followed by a full census in 1981, and a resumption of the five-year interval for census taking. This five-year periodicity was broken in 2001 when the census planned for that year was postponed until April 2002 due to the outbreak of foot and mouth disease.

## **Historic population trends**

The population of the area comprising the Republic of Ireland was over 6.5 million as measured by the 1841 Census of Population. The deaths which resulted from the famine of 1846/47 and the large scale emigration which followed in its wake and which continued throughout the second half of the 19th century culminated in a halving of the population by 1901. Further population declines followed between 1901 and 1926, albeit at a lower level than previously. The population stabilised at around 2.9 million for over a quarter of a century before reaching its low point of 2.8 million as determined by the 1961 Census. Apart from the decline experienced in the late 1980s, the direction of population change has since been positive.

With 36.7 per cent, Munster had the largest population share in 1841, followed by Leinster with 30.2 per cent. Leinster's share gradually began to increase and surpassed that of Munster by 1891. Its share continued to increase further and by 1971 it accounted for over half of the total population of the State. Munster's share of the total population has declined from 36.7 per cent in 1841 to 28.1 per cent in 2002. The decline in the share of Connacht and Ulster (part of) has been even more acute, the 2002 levels being 11.9 per cent and 6.3 per cent respectively.

## **Factors affecting population change**

The census figures relate to the number of persons present in the State on census night. The change in population between successive censuses reflects the effect of births and deaths and of movements of persons into and out of the State during the relevant period. As the number of births and deaths is known from the vital statistics registration system, it is possible to determine net migration (the difference between inward and outward migration) as a residual figure. Because of differing lengths, it is best to express the figures for intercensal periods as annual averages.

In the period from 1926 to 1951, gains due to natural increase were counterbalanced by losses due to net emigration, resulting in little change to the overall population totals. The heavy losses due to high net emigration during the 1950s resulted in an average annual fall in population of around 14,000 during that decade and culminated in the population low point of 2.8 million in 1961. The population has increased in every intercensal period since then, apart from 1986-1991 when a fairly modest decline was experienced. The increases were most pronounced during the 1971-1979 and 1996-2002 intercensal periods with an annual increase of around 49,000 for both periods. Natural increase accounted for 72 per cent of the population increase in the 1971-1979 intercensal period, whereas for 1996-2002, net immigration accounted for over half of the increase.

## **Population by age and sex**

The State's average age of the population was 35.1 years in 2002 compared with 34.1 six years earlier.

The increase in births during the 1960s and 1970s is reflected in the number of very young persons (ie those aged 0-4) reaching a peak of 353,000 in 1981. Even though the fertility rate of women aged 20-39 declined in the 1970s, the increase of 37 per cent in their numbers during this period ensured an increase in the number of births. The number of very young persons declined to just over a quarter of a million in 1996, but has since increased to 278,000 according to the 2002 Census. The main cause of this increase was an increase in the birth rates in recent years.

While the number of old persons (those aged 65 years and over) increased by almost a third between 1971 and 2002, their share of the population is still at a fairly low level (11.1%) by international standards.

Population figures for the period since 1996 show annual growth of around 1.3 per cent. The total for the population from the 2002 Census is 3.92 million.

The number of males in the population exceeded the number of females by 13,300 in 1971. The 1986 Census witnessed a small female surplus which has since strengthened. By 2002, females outnumbered males by 25,000.

## **Marital status and living arrangements**

42.5 per cent of the population aged 15 and over were single and 47.1 per cent were married (excluding those separated). The remaining 10.4 per cent were either widowed or separated (including divorced).

The number of divorced persons more than trebled, from 9,800 to 35,100, between 1996 and 2002, reflecting to a large extent the legalisation of divorce in the State in 1997. The number of separated (including divorced) persons increased from 87,800 in 1996 to 133,800 in 2002.

Limerick City has the highest proportion of separated people at 11.7 per cent. This measure expresses the number of separated including divorced as a percentage of those ever-married including widowed. This was followed by Dublin City (10.6%). At the other end of the scale, County Cavan had the lowest proportion at 4.9 per cent of those who ever married.

Cohabiting couples accounted for 8.4 per cent of all family units in 2002 compared with 3.9 per cent in 1996. Those without children accounted for one in five of all childless couples in 2002, while those with children represented 5.5 per cent of all couples with children. The number of children living with cohabiting parents increased from 23,000 in 1996 to 51,700 in 2002.

## **Migration, birthplace and nationality**

According to the 2002 Census, 90 per cent of persons usually resident in the State were born there. Of these nearly four out of five live in the county in which they were born. Close to 50,000 Northern Ireland born persons were usual residents of the State in 2002. A further 200,000 were born in Britain.

In the twelve months leading up to census day in 2002, 76,000 persons immigrated into the State. Of these, one third were Irish born.

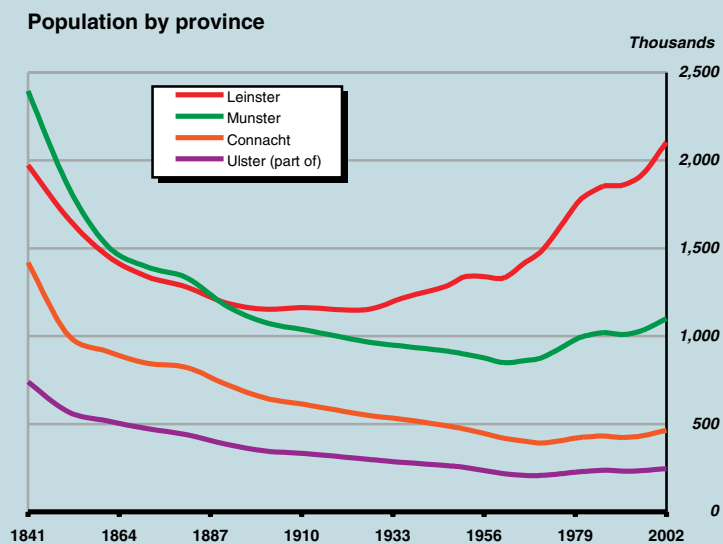
Irish nationals accounted for 91.6 per cent of the usually resident population with those with dual Irish/Other nationalities accounting for a further 1.3 per cent. Of the remaining 5.8 per cent of the population, for whom a non-Irish nationality was indicated, almost half (2.7%) were UK nationals. Other EU nationals and the nationals of other European countries were the next most numerous categories followed by Asian, African and US nationals.

**Table 1.1 Population by province**

Thousands

Census year	Total	Leinster	Munster	Connacht	Ulster (part)
1841	6,528.8	1,973.7	2,396.2	1,418.9	740.0
1851	5,111.6	1,672.7	1,857.7	1,010.0	571.1
1861	4,402.1	1,457.6	1,513.6	913.1	517.8
1871	4,053.2	1,339.5	1,393.5	846.2	474.0
1881	3,870.0	1,279.0	1,331.1	821.7	438.3
1891	3,468.7	1,187.8	1,172.4	724.8	383.8
1901	3,221.8	1,152.8	1,076.2	646.9	345.9
1911	3,139.7	1,162.0	1,035.5	611.0	331.2
1926	2,972.0	1,149.1	969.9	552.9	300.1
1936	2,968.4	1,220.4	942.3	525.5	280.3
1946	2,955.1	1,281.1	917.3	492.8	263.9
1951	2,960.6	1,336.6	898.9	471.9	253.3
1956	2,898.3	1,338.9	877.2	446.2	235.9
1961	2,818.3	1,332.1	849.2	419.5	217.5
1966	2,884.0	1,414.4	859.3	402.0	208.3
1971	2,978.2	1,498.1	882.0	390.9	207.2
1979	3,368.2	1,743.9	979.8	418.5	226.0
1981	3,443.4	1,790.5	998.3	424.4	230.2
1986	3,540.6	1,852.6	1,020.6	431.4	236.0
1991	3,525.7	1,860.9	1,009.5	423.0	232.2
1996	3,626.1	1,924.7	1,033.9	433.2	234.3
2002	3,917.2	2,105.6	1,100.6	464.3	246.7

Source: CSO



**Table 1.2 Average annual births, deaths, natural increase and estimated net migration for each intercensal period**

*Thousands*

Period	Total births	Total deaths	Natural increase	Change in population	Estimated net migration
1926-1936	58	42	16	0	-17
1936-1946	60	43	17	-1	-19
1946-1951	66	40	26	1	-24
1951-1956	63	36	27	-12	-39
1956-1961	61	34	26	-16	-42
1961-1966	63	33	29	13	-16
1966-1971	63	33	30	19	-11
1971-1979	69	33	35	49	14
1979-1981	73	33	40	38	-3
1981-1986	67	33	34	19	-14
1986-1991	56	32	24	-3	-27
1991-1996	50	31	18	20	2
1996-2002	54	31	23	49	26

Source: CSO

**Components of population changes**

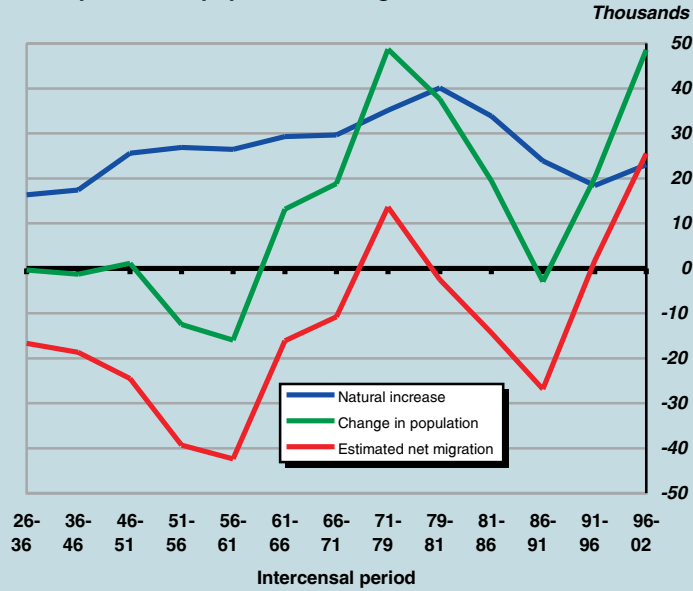


Table 1.3 Population by province, county and city, 2002

Province, county or city	Persons	Males	Females	Change in population 1996-2002	
				Actual	%
				Thousands	
	<i>Thousands</i>	<i>Thousands</i>	<i>Thousands</i>	<i>Thousands</i>	
<b>Leinster</b>	<b>2,105.6</b>	<b>1,038.0</b>	<b>1,067.6</b>	<b>180.9</b>	<b>9.4</b>
Carlow	46.0	23.4	22.6	4.4	10.6
Dublin	1,122.8	544.1	578.7	64.6	6.1
<i>Dublin City</i>	<i>495.8</i>	<i>237.8</i>	<i>258.0</i>	<i>13.9</i>	<i>2.9</i>
<i>Dún Laoghaire-Rathdown</i>	<i>191.8</i>	<i>91.3</i>	<i>100.5</i>	<i>1.8</i>	<i>0.9</i>
<i>Fingal</i>	<i>196.4</i>	<i>97.4</i>	<i>99.0</i>	<i>28.7</i>	<i>17.1</i>
<i>South Dublin</i>	<i>238.8</i>	<i>117.5</i>	<i>121.3</i>	<i>20.1</i>	<i>9.2</i>
Kildare	163.9	82.7	81.2	29.0	21.4
Kilkenny	80.3	40.5	39.8	5.0	6.6
Laois	58.8	30.1	28.6	5.8	11.0
Longford	31.1	15.8	15.3	0.9	3.0
Louth	101.8	50.5	51.3	9.7	10.5
Meath	134.0	67.7	66.3	24.3	22.1
Offaly	63.7	32.2	31.5	4.5	7.7
Westmeath	71.9	36.0	35.9	8.5	13.5
Wexford	116.6	58.2	58.4	12.2	11.7
Wicklow	114.7	56.8	57.9	12.0	11.7
<b>Munster</b>	<b>1,100.6</b>	<b>550.1</b>	<b>550.5</b>	<b>66.7</b>	<b>6.5</b>
Clare	103.3	52.1	51.2	9.3	9.9
Cork	447.8	222.3	225.5	27.3	6.5
<i>Cork City</i>	<i>123.1</i>	<i>59.3</i>	<i>63.8</i>	<i>-4.1</i>	<i>-3.2</i>
<i>Cork County</i>	<i>324.8</i>	<i>163.1</i>	<i>161.7</i>	<i>31.5</i>	<i>10.7</i>
Kerry	132.5	66.6	66.0	6.4	5.1
Limerick	175.3	87.6	87.7	10.3	6.2
<i>Limerick City</i>	<i>54.0</i>	<i>26.1</i>	<i>27.9</i>	<i>2.0</i>	<i>3.8</i>
<i>Limerick County</i>	<i>121.3</i>	<i>61.5</i>	<i>59.8</i>	<i>8.3</i>	<i>7.3</i>
North Tipperary	61.0	30.9	30.1	3.0	5.2
South Tipperary	79.1	40.0	39.1	3.6	4.8
Waterford	101.5	50.7	50.9	6.9	7.3
<i>Waterford City</i>	<i>44.6</i>	<i>21.8</i>	<i>22.8</i>	<i>2.1</i>	<i>4.8</i>
<i>Waterford County</i>	<i>57.0</i>	<i>28.9</i>	<i>28.1</i>	<i>4.8</i>	<i>9.2</i>
<b>Connacht</b>	<b>464.3</b>	<b>233.2</b>	<b>231.1</b>	<b>31.1</b>	<b>7.2</b>
Galway	209.1	104.4	104.7	20.2	10.7
<i>Galway City</i>	<i>65.8</i>	<i>31.0</i>	<i>34.8</i>	<i>8.6</i>	<i>15.0</i>
<i>Galway County</i>	<i>143.2</i>	<i>73.4</i>	<i>69.9</i>	<i>11.6</i>	<i>8.8</i>
Leitrim	25.8	13.3	12.5	0.7	3.0
Mayo	117.4	59.1	58.3	5.9	5.3
Roscommon	53.8	27.6	26.2	1.8	3.5
Sligo	58.2	28.8	29.4	2.4	4.3
<b>Ulster (part)</b>	<b>246.7</b>	<b>124.8</b>	<b>121.9</b>	<b>12.5</b>	<b>5.3</b>
Cavan	56.5	29.0	27.5	3.6	6.8
Donegal	137.6	69.0	68.6	7.6	5.8
Monaghan	52.6	26.8	25.8	1.3	2.5
<b>Total</b>	<b>3,917.2</b>	<b>1,946.2</b>	<b>1,971.0</b>	<b>291.1</b>	<b>8.0</b>

Source: CSO

Table 1.4 Population by sex and age group for census years

Thousands

Age group		1971	1979	1981	1986	1991	1996	2002
<b>Persons</b>	0-4	315.7	343.5	353.0	324.1	273.7	250.4	277.6
	5-9	316.9	350.1	349.5	350.7	318.5	282.9	264.1
	10-14	298.6	336.3	341.2	350.0	348.3	326.1	285.7
	15-19	267.7	317.4	326.4	331.1	335.0	339.5	313.2
	20-24	215.3	266.3	276.1	286.4	266.6	293.4	328.3
	25-29	173.0	239.4	246.1	258.4	246.3	259.0	312.7
	30-34	151.4	220.1	232.0	242.7	249.1	260.9	304.7
	35-39	149.1	178.5	193.8	229.7	237.9	255.7	290.9
	40-44	152.7	159.4	165.9	191.8	225.7	240.4	272.0
	45-49	160.1	152.4	151.9	161.7	187.8	225.4	249.6
	50-54	159.1	151.7	149.7	147.5	156.8	186.6	230.8
	55-59	154.8	154.1	149.6	142.2	142.5	153.8	197.3
	60-64	134.1	137.7	139.3	140.0	134.6	137.9	154.3
	65-69	111.8	133.8	133.9	129.5	130.8	126.8	133.5
	70-74	99.0	98.3	103.1	111.0	109.3	112.5	112.1
	75-79	61.8	68.9	68.5	75.5	84.1	84.1	89.8
	80-84	36.4	38.0	40.5	42.9	49.3	55.8	58.9
	85 and over	20.9	22.5	23.0	25.5	29.4	34.7	41.7
	<b>Total</b>	<b>2,978.2</b>	<b>3,368.2</b>	<b>3,443.4</b>	<b>3,540.6</b>	<b>3,525.7</b>	<b>3,626.1</b>	<b>3,917.2</b>
<b>Males</b>	0-4	161.8	175.6	181.0	166.4	140.6	128.7	142.0
	5-9	161.8	179.1	179.1	179.8	163.3	145.3	135.9
	10-14	152.1	172.3	175.3	179.4	178.9	167.4	146.1
	15-19	136.8	162.3	166.7	169.9	171.4	174.0	160.4
	20-24	110.0	135.8	140.4	144.1	136.5	149.1	165.3
	25-29	87.7	121.6	124.4	129.1	120.7	129.4	156.1
	30-34	76.8	112.7	118.3	122.2	123.2	127.7	152.4
	35-39	75.5	91.8	99.3	116.4	118.7	126.1	144.5
	40-44	76.4	81.8	85.3	98.0	113.9	120.1	135.3
	45-49	79.5	77.8	77.8	82.8	95.4	113.8	125.0
	50-54	80.0	75.6	75.3	75.2	79.9	94.8	116.6
	55-59	78.4	76.1	73.3	70.5	71.7	77.8	99.8
	60-64	68.1	67.8	68.0	67.2	65.6	68.7	77.6
	65-69	54.5	65.0	64.3	61.1	61.0	60.3	65.3
	70-74	44.6	45.8	48.4	50.9	49.2	50.1	51.7
	75-79	27.8	29.1	29.2	32.6	35.7	35.2	37.4
	80-84	15.7	14.9	15.4	16.1	19.0	21.1	22.3
	85 and over	8.1	8.1	7.9	8.0	8.9	10.6	12.5
	<b>Total</b>	<b>1,495.8</b>	<b>1,693.3</b>	<b>1,729.4</b>	<b>1,769.7</b>	<b>1,753.4</b>	<b>1,800.2</b>	<b>1,946.2</b>
<b>Females</b>	0-4	153.8	167.8	172.0	157.7	133.2	121.7	135.6
	5-9	155.1	171.1	170.4	170.8	155.2	137.6	128.2
	10-14	146.4	164.0	166.0	170.6	169.4	158.7	139.6
	15-19	131.0	155.1	159.8	161.2	163.6	165.6	152.8
	20-24	105.3	130.5	135.7	142.3	130.1	144.2	163.0
	25-29	85.3	117.8	121.7	129.4	125.7	129.7	156.6
	30-34	74.5	107.4	113.7	120.5	125.9	133.2	152.3
	35-39	73.6	86.7	94.5	113.3	119.2	129.5	146.4
	40-44	76.3	77.6	80.6	93.8	111.8	120.4	136.7
	45-49	80.6	74.7	74.1	79.0	92.3	111.6	124.6
	50-54	79.0	76.1	74.4	72.4	76.9	91.8	114.3
	55-59	76.4	77.9	76.3	71.7	70.9	76.0	97.5
	60-64	65.9	69.9	71.3	72.8	69.0	69.3	76.7
	65-69	57.3	68.8	69.6	68.4	69.8	66.6	68.2
	70-74	54.4	52.5	54.8	60.1	60.1	62.4	60.4
	75-79	34.0	39.7	39.3	42.9	48.4	48.9	52.4
	80-84	20.7	23.1	25.0	26.8	30.3	34.7	36.6
	85 and over	12.8	14.3	15.1	17.4	20.5	24.1	29.2
	<b>Total</b>	<b>1,482.5</b>	<b>1,674.9</b>	<b>1,714.1</b>	<b>1,771.0</b>	<b>1,772.3</b>	<b>1,825.9</b>	<b>1,971.0</b>

Source: CSO

**Table 1.5 Estimated population by sex and age group**

Thousands

	Age group	1997	1998	1999	2000	2001	2002	2003
<b>Persons</b>	0-4	250.0	253.6	259.4	265.1	270.8	277.6	284.9
	5-9	277.7	273.5	270.0	265.3	261.9	264.1	268.2
	10-14	317.9	308.1	299.9	294.0	289.0	285.7	281.0
	15-19	343.9	346.5	343.0	333.9	325.9	313.2	306.9
	20-24	298.6	306.1	314.9	326.1	334.8	328.3	335.9
	25-29	267.3	279.6	290.8	302.7	316.8	312.7	318.5
	30-34	262.4	263.0	264.6	267.7	275.4	304.7	313.4
	35-39	258.0	262.1	265.9	269.9	271.6	290.9	294.5
	40-44	246.0	248.7	251.8	255.2	260.7	272.0	278.1
	45-49	228.1	232.5	234.4	238.4	243.1	249.6	253.2
	50-54	197.9	207.2	216.3	223.2	226.1	230.8	234.8
	55-59	155.9	162.2	167.8	173.5	184.3	197.3	206.7
	60-64	140.5	141.5	144.3	148.0	149.6	154.3	160.4
	65-69	126.4	127.5	127.8	128.0	129.2	133.5	135.1
	70-74	112.7	111.5	110.7	110.6	110.8	112.1	113.6
	75-79	85.0	88.2	88.8	88.6	88.7	89.8	89.6
	80-84	55.8	54.4	54.2	55.2	57.1	58.9	61.5
	85 and over	36.6	38.7	40.1	41.7	43.2	41.7	42.8
		<b>Total</b>	<b>3,660.6</b>	<b>3,704.9</b>	<b>3,744.7</b>	<b>3,786.9</b>	<b>3,838.9</b>	<b>3,917.2</b>
<b>Males</b>	0-4	128.6	130.8	133.8	136.8	139.5	142.0	145.6
	5-9	142.1	140.1	138.3	136.0	134.5	135.9	137.7
	10-14	163.3	157.9	153.5	150.3	147.6	146.1	144.2
	15-19	176.4	177.3	176.1	171.5	167.3	160.4	157.0
	20-24	151.9	155.6	158.8	164.0	168.5	165.3	168.2
	25-29	133.5	140.5	146.4	153.2	160.1	156.1	159.4
	30-34	128.6	129.5	130.5	133.1	138.1	152.4	157.2
	35-39	127.1	129.0	131.0	132.4	133.7	144.5	146.5
	40-44	122.6	123.6	125.3	126.7	129.2	135.3	138.2
	45-49	114.7	116.5	117.3	119.3	121.7	125.0	126.5
	50-54	100.5	105.3	109.6	112.7	113.8	116.6	118.2
	55-59	79.1	82.0	84.9	87.8	93.1	99.8	104.9
	60-64	69.9	70.3	71.7	73.8	74.6	77.6	80.6
	65-69	60.7	61.7	62.3	62.4	63.0	65.3	66.0
	70-74	50.2	49.8	49.7	50.1	50.7	51.7	53.1
	75-79	35.6	36.7	37.0	36.8	37.0	37.4	37.3
	80-84	20.9	20.4	20.4	20.9	21.6	22.3	23.2
	85 and over	11.4	12.1	12.6	13.0	13.6	12.5	12.9
		<b>Total</b>	<b>1,817.2</b>	<b>1,839.1</b>	<b>1,859.1</b>	<b>1,880.6</b>	<b>1,907.4</b>	<b>1,946.2</b>
<b>Females</b>	0-4	121.3	122.9	125.6	128.3	131.3	135.6	139.3
	5-9	135.6	133.4	131.7	129.3	127.4	128.2	130.4
	10-14	154.5	150.2	146.3	143.7	141.3	139.6	136.9
	15-19	167.5	169.2	166.9	162.4	158.6	152.8	149.9
	20-24	146.7	150.5	156.1	162.1	166.4	163.0	167.6
	25-29	133.8	139.1	144.4	149.5	156.8	156.6	159.0
	30-34	133.8	133.5	134.0	134.6	137.3	152.3	156.2
	35-39	130.9	133.1	134.9	137.6	138.0	146.4	148.0
	40-44	123.5	125.1	126.6	128.5	131.5	136.7	139.9
	45-49	113.3	116.0	117.1	119.1	121.4	124.6	126.7
	50-54	97.5	102.0	106.8	110.5	112.3	114.3	116.6
	55-59	76.8	80.2	82.8	85.8	91.3	97.5	101.8
	60-64	70.6	71.1	72.6	74.3	75.0	76.7	79.8
	65-69	65.8	65.8	65.5	65.6	66.2	68.2	69.2
	70-74	62.5	61.7	61.0	60.5	60.1	60.4	60.5
	75-79	49.4	51.5	51.9	51.7	51.8	52.4	52.2
	80-84	34.9	34.0	33.9	34.3	35.5	36.6	38.2
	85 and over	25.2	26.6	27.5	28.7	29.5	29.2	29.8
		<b>Total</b>	<b>1,843.4</b>	<b>1,865.8</b>	<b>1,885.6</b>	<b>1,906.3</b>	<b>1,931.5</b>	<b>1,971.0</b>

Source: CSO

TABLE 1.5

**Table 1.6 Population of inhabited islands off the coast**

County	Island	1996	2002			
		Persons	Persons	Males	Females	
Clare	Inishmore (or Deer)	1	1	0	1	
Cork	Ballycottin	27	0	0	0	
	Bear	212	207	117	90	
	Clear	145	129	72	57	
	Dursey	9	6	4	2	
	Garinish	1	0	0	0	
	Haulbowline	110	75	55	20	
	Horse Island	0	3	1	2	
	Inchydoney	102	134	59	75	
	Inishbeg	19	13	6	7	
	Inishodriscol (or Hare)	16	27	16	11	
	Long	9	12	9	3	
	Ringarogy	76	88	45	43	
	Sherkin	98	129	65	64	
	Spike	103	61	58	3	
	Whiddy	34	29	16	13	
	Donegal	Aran	602	543	285	258
		Aughnish	3	3	1	2
Cruit		70	61	26	35	
Gola Island		0	5	4	1	
Inishbofin		24	16	12	4	
Inishfree Upper		15	7	3	4	
Island Roy		15	7	4	3	
Tory		169	133	68	65	
North Bull		22	17	10	7	
Lambay		8	6	3	3	
Dublin City	Annaghvaan	104	121	60	61	
	Furnace	59	56	34	22	
Fingal	Gorumna	1,057	1,015	515	500	
	Illlaunmore	1	1	1	0	
Galway	Inchaghaun	3	3	2	1	
	Inishbarra	1	0	0	0	
Kerry	Inishbofin	200	178	99	79	
	Inisheer	274	262	148	114	
	Inishmaan	191	187	99	88	
	Inishmore	838	831	420	411	
	Inishnee	33	24	14	10	
	Inishtravin	3	1	1	0	
	Lettermore	503	497	265	232	
	Lettermullan	204	219	120	99	
	Mweenish	150	146	67	79	
	Omey	4	4	4	0	
	Rossroe	23	19	10	9	
	Rusheennacholla	3	3	1	2	
	Beginish	2	0	0	0	
	Carrig	13	10	6	4	
	Garinish Island	0	2	1	1	
	Skellig Rock Great	4	0	0	0	
	Rossmore	8	7	6	1	
Tarbert	13	5	3	2		
Valencia	676	690	376	314		

TABLE 1.6

**Table 1.6 Population of inhabited islands off the coast (continued)**

County	Island	1996	2002		
		Persons	Persons	Males	Females
Limerick	Foynes Island	0	5	4	1
Mayo	Achill	2,718	2,620	1,280	1,340
	Clare	136	127	73	54
	Clynish	5	5	3	2
	Collan More	0	3	3	0
	Inishbiggle	48	39	26	13
	Inishcottle	7	4	1	3
	Inishgort	2	1	1	0
	Inishlyre	7	7	5	2
	Inishnakillew	6	5	3	2
	Inishturk	83	72	44	28
	Inisraher	0	4	2	2
	Island More	0	1	1	0
	Sligo	Inishmulclohy(or Coney Island)	6	3	2

Source: CSO

**Table 1.7 Travellers by age group, sex and marital status, 2002**

Age group	Total	Marital status			
		Single	Married	Separated (including divorced)	Widowed
<b>Persons</b>					
0-4 years	3,408	3,408	-	-	-
5-14 years	6,593	6,593	-	-	-
15-24 years	4,850	3,725	1,040	79	6
25-34 years	3,386	976	2,090	291	29
35-44 years	2,332	335	1,688	250	59
45-54 years	1,458	187	1,069	132	70
55-64 years	878	97	604	68	109
65 years and over	776	116	347	21	292
<b>Total</b>	<b>23,681</b>	<b>15,437</b>	<b>6,838</b>	<b>841</b>	<b>565</b>
<b>Males</b>					
0-4 years	1,786	1,786	-	-	-
5-14 years	3,302	3,302	-	-	-
15-24 years	2,372	1,920	434	17	1
25-34 years	1,615	493	1,039	80	3
35-44 years	1,108	178	850	62	18
45-54 years	733	117	548	53	15
55-64 years	438	67	308	35	28
65 years and over	354	71	198	16	69
<b>Total</b>	<b>11,708</b>	<b>7,934</b>	<b>3,377</b>	<b>263</b>	<b>134</b>
<b>Females</b>					
0-4 years	1,622	1,622	-	-	-
5-14 years	3,291	3,291	-	-	-
15-24 years	2,478	1,805	606	62	5
25-34 years	1,771	483	1,051	211	26
35-44 years	1,224	157	838	188	41
45-54 years	725	70	521	79	55
55-64 years	440	30	296	33	81
65 years and over	422	45	149	5	223
<b>Total</b>	<b>11,973</b>	<b>7,503</b>	<b>3,461</b>	<b>578</b>	<b>431</b>

Source: CSO

TABLE 1.6

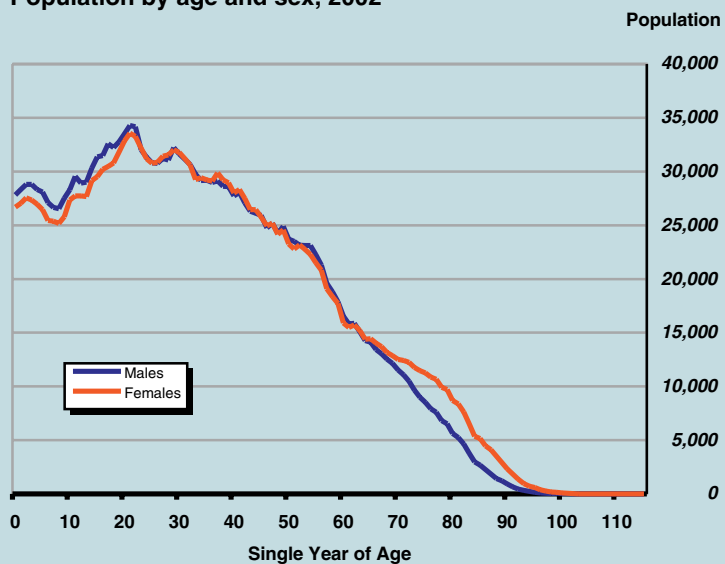
TABLE 1.7

**Table 1.8 Males and females by age group and marital status, 2002**

Age group	Persons	Males				Females			
		Total	Single	Ever married	Widowed	Total	Single	Ever married	Widowed
0-4	277,630	142,040	142,040	-	-	135,590	135,590	-	-
5-9	264,090	135,890	135,890	-	-	128,200	128,200	-	-
10-14	285,708	146,114	146,114	-	-	139,594	139,594	-	-
15-19	313,188	160,413	160,218	194	1	152,775	152,302	467	6
20-24	328,334	165,292	162,504	2,763	25	163,042	156,529	6,458	55
25-29	312,693	156,100	129,582	26,468	50	156,593	114,550	41,897	146
30-34	304,676	152,377	75,562	76,684	131	152,299	59,998	91,720	581
35-39	290,906	144,530	40,703	103,470	357	146,376	31,622	113,692	1,062
40-44	271,984	135,301	26,552	108,134	615	136,683	19,952	114,809	1,922
45-49	249,604	124,981	20,392	103,478	1,111	124,623	14,654	106,808	3,161
50-54	230,843	116,585	17,915	96,756	1,914	114,258	11,409	97,576	5,273
55-59	197,294	99,827	14,468	82,707	2,652	97,467	9,199	79,722	8,546
60-64	154,252	77,559	12,263	61,838	3,458	76,693	7,780	56,931	11,982
65-69	133,474	65,290	11,855	48,792	4,643	68,184	8,291	41,547	18,346
70-74	112,129	51,719	10,843	35,177	5,699	60,410	8,823	26,809	24,778
75-79	89,815	37,377	8,180	22,785	6,412	52,438	8,624	15,182	28,632
80-84	58,857	22,283	4,906	11,733	5,644	36,574	6,591	6,260	23,723
85 and over	41,726	12,486	2,648	4,940	4,898	29,240	5,749	2,454	21,037
<b>Total</b>	<b>3,917,203</b>	<b>1,946,164</b>	<b>1,122,635</b>	<b>785,919</b>	<b>37,610</b>	<b>1,971,039</b>	<b>1,019,457</b>	<b>802,332</b>	<b>149,250</b>

Source: CSO

**Population by age and sex, 2002**



**Table 1.9 Usually resident persons, males and females, classified by place of birth, 2002**

Birthplace	Persons	Males	Females
<b>Ireland (Republic)</b>	<b>3,458,479</b>	<b>1,717,314</b>	<b>1,741,165</b>
County of usual residence	2,697,735	1,373,336	1,324,399
Other county	760,744	343,978	416,766
<b>Outside Ireland (Republic)</b>	<b>400,016</b>	<b>198,909</b>	<b>201,107</b>
<b>EU</b>	<b>281,316</b>	<b>137,168</b>	<b>144,148</b>
Northern Ireland	49,928	24,344	25,584
England and Wales	182,624	89,486	93,138
Scotland	15,963	7,946	8,017
Austria	533	223	310
Belgium	1,141	581	560
Denmark	692	307	385
Finland	687	182	505
France	6,794	3,236	3,558
Germany	8,770	3,991	4,779
Greece	345	205	140
Italy	3,705	2,122	1,583
Luxembourg	85	47	38
Netherlands	3,512	1,871	1,641
Portugal	590	358	232
Spain	4,632	1,817	2,815
Sweden	1,315	452	863
<b>Other European Countries</b>	<b>26,235</b>	<b>14,447</b>	<b>11,788</b>
Romania	5,838	3,258	2,580
Russia	2,556	1,307	1,249
Latvia	2,281	1,223	1,058
Poland	2,167	1,290	877
Lithuania	2,120	1,111	1,009
Ukraine	1,485	878	607
Bosnia & Herzegovina	1,058	526	532
Moldova	1,032	578	454
Other	7,698	4,276	3,422
<b>Africa</b>	<b>26,515</b>	<b>13,917</b>	<b>12,598</b>
Nigeria	9,225	4,423	4,802
South Africa	6,260	3,174	3,086
Zimbabwe	1,462	742	720
Congo	1,132	599	533
Other	8,436	4,979	3,457
<b>Asia</b>	<b>28,132</b>	<b>15,349</b>	<b>12,783</b>
China	5,669	3,263	2,406
Philippines	4,086	1,412	2,674
India	3,402	2,114	1,288
Pakistan	3,391	2,172	1,219
Malaysia	2,195	1,187	1,008
Hong Kong	1,696	974	722
Other	7,693	4,227	3,466
<b>America</b>	<b>29,119</b>	<b>13,680</b>	<b>15,439</b>
USA	21,541	9,992	11,549
Canada	4,081	1,860	2,221
Brazil	1,232	785	447
Other	2,265	1,043	1,222
<b>Australia</b>	<b>6,107</b>	<b>2,966</b>	<b>3,141</b>
<b>New Zealand</b>	<b>2,256</b>	<b>1,192</b>	<b>1,064</b>
<b>Other countries</b>	<b>336</b>	<b>190</b>	<b>146</b>
<b>Total</b>	<b>3,858,495</b>	<b>1,916,223</b>	<b>1,942,272</b>

Source: CSO

TABLE 1.9

**Table 1.10 Persons usually resident in each province and county, and present in the State on census night, classified by country of birth, 2002**

County of usual residence	Birthplace								
	Total persons	Ireland (Republic)			Northern Ireland	Great Britain	Other European countries	USA	Rest of world
		County of usual residence	Other county						
<b>Leinster</b>	<b>2,079,055</b>	<b>1,380,503</b>	<b>480,807</b>	<b>25,786</b>	<b>93,172</b>	<b>38,331</b>	<b>10,087</b>	<b>50,369</b>	
Carlow	45,638	28,494	13,629	196	2,094	460	128	637	
Dublin County and City	1,105,134	798,869	177,915	14,228	44,747	27,677	5,958	35,740	
Kildare	162,554	75,517	70,916	1,419	8,201	2,332	803	3,366	
Kilkenny	79,101	53,307	19,700	341	4,017	640	265	831	
Laois	57,926	38,855	15,209	215	2,565	332	149	601	
Longford	30,919	20,011	8,193	205	1,727	242	170	371	
Louth	101,138	73,666	15,841	5,171	3,010	925	363	2,162	
Meath	133,300	64,666	56,054	1,555	6,708	1,424	724	2,169	
Offaly	63,404	41,976	17,122	256	2,804	491	245	510	
Westmeath	71,013	43,049	21,078	526	3,905	864	388	1,203	
Wexford	115,492	85,619	20,493	461	6,635	1,063	238	983	
Wicklow	113,436	56,474	44,657	1,213	6,759	1,881	656	1,796	
<b>Munster</b>	<b>1,081,361</b>	<b>817,298</b>	<b>166,135</b>	<b>5,062</b>	<b>59,679</b>	<b>13,467</b>	<b>6,249</b>	<b>13,471</b>	
Clare	101,255	62,789	26,561	921	6,613	1,640	885	1,846	
Cork County and City	442,444	358,359	45,810	1,867	22,660	5,844	2,285	5,619	
Kerry	127,477	95,094	18,031	565	8,772	2,102	1,395	1,518	
Limerick County and City	171,112	128,075	29,657	714	8,009	1,792	762	2,103	
Tipperary	139,441	102,104	26,204	496	7,763	1,239	493	1,142	
Waterford County and City	99,632	70,877	19,872	499	5,862	850	429	1,243	
<b>Connacht</b>	<b>454,360</b>	<b>316,801</b>	<b>86,412</b>	<b>4,040</b>	<b>32,690</b>	<b>5,246</b>	<b>3,821</b>	<b>5,350</b>	
Galway County and City	202,958	142,465	37,275	1,591	13,498	2,986	2,005	3,138	
Leitrim	25,609	16,426	6,127	462	1,890	324	225	155	
Mayo	115,583	86,449	15,534	800	9,879	1,038	915	968	
Roscommon	53,123	32,570	15,262	358	3,782	358	298	495	
Sligo	57,087	38,891	12,214	829	3,641	540	378	594	
<b>Ulster (part of)</b>	<b>243,719</b>	<b>183,133</b>	<b>27,390</b>	<b>15,040</b>	<b>13,046</b>	<b>1,992</b>	<b>1,384</b>	<b>1,734</b>	
Cavan	55,743	40,743	9,755	1,900	1,969	577	355	444	
Donegal	135,756	104,829	9,555	9,662	9,272	713	763	962	
Monaghan	52,220	37,561	8,080	3,478	1,805	702	266	328	
<b>Total</b>	<b>3,858,495</b>	<b>2,697,735</b>	<b>760,744</b>	<b>49,928</b>	<b>198,587</b>	<b>59,036</b>	<b>21,541</b>	<b>70,924</b>	

Source: CSO

**Table 1.11 Usually resident persons, males and females, classified by nationality, 2002**

Nationality	Persons	Males	Females
<b>Total Irish</b>	<b>3,584,975</b>	<b>1,778,590</b>	<b>1,806,385</b>
Irish	3,535,676	1,754,716	1,780,960
Irish-English	20,491	9,997	10,494
Irish-American	12,387	5,721	6,666
Irish-European	4,172	2,046	2,126
Irish-Other	12,249	6,110	6,139
<b>Non-Irish</b>	<b>224,261</b>	<b>112,593</b>	<b>111,668</b>
<b>EU</b>	<b>133,436</b>	<b>64,647</b>	<b>68,789</b>
Austria	553	222	331
Belgium	789	391	398
Denmark	631	287	344
Finland	876	285	591
France	6,363	3,059	3,304
Germany	7,216	3,200	4,016
Greece	253	149	104
Italy	3,770	2,145	1,625
Luxembourg	16	9	7
Netherlands	3,108	1,638	1,470
Portugal	687	428	259
Spain	4,436	1,732	2,704
Sweden	1,262	425	837
UK	103,476	50,677	52,799
<b>Rest of Europe</b>	<b>23,105</b>	<b>12,863</b>	<b>10,242</b>
Romania	4,978	2,836	2,142
Russia	2,703	1,399	1,304
Poland	2,124	1,275	849
Lithuania	2,104	1,091	1,013
Latvia	1,797	974	823
Ukraine	1,420	828	592
Czech Republic	1,103	713	390
Other	6,876	3,747	3,129
<b>Africa</b>	<b>20,981</b>	<b>11,039</b>	<b>9,942</b>
Nigeria	8,969	4,271	4,698
South Africa	4,185	2,167	2,018
Other	7,827	4,601	3,226
<b>Asia</b>	<b>21,779</b>	<b>12,014</b>	<b>9,765</b>
China	5,842	3,424	2,418
Philippines	3,900	1,383	2,517
Pakistan	2,939	1,891	1,048
India	2,534	1,668	866
Malaysia	1,686	907	779
Other	4,878	2,741	2,137
<b>America</b>	<b>15,383</b>	<b>7,223</b>	<b>8,160</b>
USA	11,384	5,196	6,188
Canada	1,932	870	1,062
Brazil	1,087	713	374
Other	980	444	536
<b>Australia</b>	<b>3,706</b>	<b>1,752</b>	<b>1,954</b>
<b>New Zealand</b>	<b>1,637</b>	<b>858</b>	<b>779</b>
<b>Other nationalities</b>	<b>1,894</b>	<b>1,096</b>	<b>798</b>
<b>Multi-nationality</b>	<b>2,340</b>	<b>1,101</b>	<b>1,239</b>
<b>No nationality</b>	<b>847</b>	<b>482</b>	<b>365</b>
<b>Not stated</b>	<b>48,412</b>	<b>24,558</b>	<b>23,854</b>
<b>Total</b>	<b>3,858,495</b>	<b>1,916,223</b>	<b>1,942,272</b>

Source: CSO

TABLE 1.11

**Table 1.12 Persons aged one year and over, usually resident in each county, and present in the State on census night, classified by usual residence one year previously, 2002**

County of usual residence	Usual residence one year previously					
	Total	Different address				
		Same address	Same county	Other county	Outside State	
					Birthplace in Ireland (Republic)	Birthplace elsewhere
Carlow	44,922	40,736	2,204	1,348	235	399
Dublin County and City	1,090,177	981,173	66,397	13,570	8,970	20,067
Kildare	159,709	144,538	6,596	5,598	982	1,995
Kilkenny	77,987	72,141	2,870	1,908	441	627
Laois	56,997	52,492	2,041	1,854	254	356
Longford	30,442	28,088	1,101	761	175	317
Louth	99,414	90,813	4,439	2,388	552	1,222
Meath	130,988	118,561	4,218	5,891	728	1,590
Offaly	62,452	57,773	2,218	1,715	315	431
Westmeath	69,958	63,037	2,916	2,575	477	953
Wexford	113,839	104,813	4,626	2,876	602	922
Wicklow	111,844	102,860	4,148	2,939	661	1,236
Clare	99,778	91,404	4,313	2,143	598	1,320
Cork County and City	436,451	399,712	24,156	5,239	2,882	4,462
Kerry	125,873	116,532	5,061	2,000	710	1,570
Limerick County and City	168,847	153,696	8,706	3,536	1,076	1,833
Tipperary	137,588	127,505	5,622	2,596	665	1,200
Waterford County and City	98,206	89,708	4,764	2,153	600	981
Galway County and City	200,178	178,838	11,749	4,963	1,699	2,929
Leitrim	25,283	23,302	732	774	146	329
Mayo	114,189	105,397	4,661	2,019	736	1,376
Roscommon	52,484	48,469	1,633	1,480	283	619
Sligo	56,392	51,650	2,556	1,278	357	551
Cavan	55,022	51,029	1,721	1,384	280	608
Donegal	133,790	124,710	4,735	1,416	903	2,026
Monaghan	51,545	48,420	1,644	623	252	606
<b>Total</b>	<b>3,804,355</b>	<b>3,467,397</b>	<b>185,827</b>	<b>75,027</b>	<b>25,579</b>	<b>50,525</b>

Source: CSO

TABLE 1.12

**Table 1.13 Population classified by religion in each province, county and city, 2002**

Province, county or city	Total persons	Religious denomination								
		Catholic	Church of Ireland (including Protestant)	Other Christian religions	Presbyterian	Muslim (Islamic)	Orthodox	Other stated religions	No religion	Not stated
<b>Leinster</b>	<b>2,105,579</b>	<b>1,828,097</b>	<b>67,877</b>	<b>13,892</b>	<b>8,447</b>	<b>13,233</b>	<b>7,570</b>	<b>30,581</b>	<b>87,730</b>	<b>48,152</b>
Carlow	46,014	41,544	1,977	239	99	152	65	382	906	650
Dublin	1,122,821	943,624	33,857	7,905	5,474	10,132	5,735	20,347	62,556	33,191
<i>Dublin City</i>	<i>495,781</i>	<i>407,661</i>	<i>12,242</i>	<i>3,226</i>	<i>2,276</i>	<i>4,265</i>	<i>3,385</i>	<i>8,967</i>	<i>33,022</i>	<i>20,737</i>
<i>Dún Laoghaire-Rathdown</i>	<i>191,792</i>	<i>156,369</i>	<i>11,284</i>	<i>1,672</i>	<i>1,442</i>	<i>1,250</i>	<i>548</i>	<i>4,404</i>	<i>11,921</i>	<i>2,902</i>
<i>Fingal</i>	<i>196,413</i>	<i>170,444</i>	<i>4,745</i>	<i>1,149</i>	<i>867</i>	<i>2,231</i>	<i>897</i>	<i>3,098</i>	<i>8,626</i>	<i>4,356</i>
<i>South Dublin</i>	<i>238,835</i>	<i>209,150</i>	<i>5,586</i>	<i>1,858</i>	<i>889</i>	<i>2,386</i>	<i>905</i>	<i>3,878</i>	<i>8,987</i>	<i>5,196</i>
Kildare	163,944	146,808	4,859	1,087	575	515	565	1,943	4,868	2,724
Kilkenny	80,339	73,186	2,384	425	293	215	78	685	1,865	1,208
Laois	58,774	53,330	2,661	268	103	159	63	510	919	761
Longford	31,068	28,577	966	88	73	121	69	300	340	534
Louth	101,821	93,228	1,590	863	335	577	124	1,174	2,420	1,510
Meath	134,005	122,251	3,100	809	442	431	298	1,293	3,231	2,150
Offaly	63,663	59,010	1,900	182	68	141	55	422	853	1,032
Westmeath	71,858	65,787	1,689	512	183	279	127	726	1,441	1,114
Wexford	116,596	105,762	4,727	542	217	275	147	922	2,690	1,314
Wicklow	114,676	94,990	8,167	972	585	236	244	1,877	5,641	1,964
<b>Munster</b>	<b>1,100,614</b>	<b>995,728</b>	<b>26,183</b>	<b>5,036</b>	<b>2,065</b>	<b>3,683</b>	<b>1,884</b>	<b>12,577</b>	<b>33,336</b>	<b>20,122</b>
Clare	103,277	92,340	1,825	696	260	395	223	1,463	3,772	2,303
Cork	447,829	401,504	12,699	2,144	841	1,387	615	5,450	15,782	7,407
<i>Cork City</i>	<i>123,062</i>	<i>109,927</i>	<i>1,887</i>	<i>637</i>	<i>199</i>	<i>545</i>	<i>277</i>	<i>1,445</i>	<i>5,041</i>	<i>3,104</i>
<i>Cork County</i>	<i>324,767</i>	<i>291,577</i>	<i>10,812</i>	<i>1,507</i>	<i>642</i>	<i>842</i>	<i>338</i>	<i>4,005</i>	<i>10,741</i>	<i>4,303</i>
Kerry	132,527	118,721	2,931	725	302	554	227	1,645	4,183	3,239
Limerick	175,304	161,793	2,838	691	231	673	369	1,731	4,255	2,723
<i>Limerick City</i>	<i>54,023</i>	<i>49,218</i>	<i>742</i>	<i>271</i>	<i>70</i>	<i>181</i>	<i>171</i>	<i>562</i>	<i>1,767</i>	<i>1,041</i>
<i>Limerick County</i>	<i>121,281</i>	<i>112,575</i>	<i>2,096</i>	<i>420</i>	<i>161</i>	<i>492</i>	<i>198</i>	<i>1,169</i>	<i>2,488</i>	<i>1,682</i>
North Tipperary	61,010	56,137	1,894	170	86	71	116	562	1,017	957
South Tipperary	79,121	73,470	1,537	207	144	208	123	565	1,468	1,399
Waterford	101,546	91,763	2,459	403	201	395	211	1,161	2,859	2,094
<i>Waterford City</i>	<i>44,594</i>	<i>39,885</i>	<i>875</i>	<i>220</i>	<i>102</i>	<i>322</i>	<i>156</i>	<i>617</i>	<i>1,410</i>	<i>1,007</i>
<i>Waterford County</i>	<i>56,952</i>	<i>51,878</i>	<i>1,584</i>	<i>183</i>	<i>99</i>	<i>73</i>	<i>55</i>	<i>544</i>	<i>1,449</i>	<i>1,087</i>
<b>Connacht</b>	<b>464,296</b>	<b>424,019</b>	<b>9,773</b>	<b>1,672</b>	<b>1,086</b>	<b>1,731</b>	<b>657</b>	<b>4,411</b>	<b>13,277</b>	<b>7,670</b>
Galway	209,077	189,153	3,535	948	453	895	424	2,234	7,491	3,944
<i>Galway City</i>	<i>65,832</i>	<i>56,260</i>	<i>1,093</i>	<i>459</i>	<i>237</i>	<i>642</i>	<i>297</i>	<i>1,162</i>	<i>3,950</i>	<i>1,732</i>
<i>Galway County</i>	<i>143,245</i>	<i>132,893</i>	<i>2,442</i>	<i>489</i>	<i>216</i>	<i>253</i>	<i>127</i>	<i>1,072</i>	<i>3,541</i>	<i>2,212</i>
Leitrim	25,799	23,235	966	72	42	33	28	283	753	387
Mayo	117,446	109,349	2,072	322	289	370	131	943	2,391	1,579
Roscommon	53,774	50,614	842	127	72	156	34	408	965	556
Sligo	58,200	51,668	2,358	203	230	277	40	543	1,677	1,204
<b>Ulster (part of)</b>	<b>246,714</b>	<b>214,762</b>	<b>11,778</b>	<b>803</b>	<b>8,984</b>	<b>500</b>	<b>326</b>	<b>2,490</b>	<b>3,921</b>	<b>3,150</b>
Cavan	56,546	49,323	3,767	204	768	185	81	564	847	807
Donegal	137,575	119,101	6,308	467	5,775	253	83	1,512	2,442	1,634
Monaghan	52,593	46,338	1,703	132	2,441	62	162	414	632	709
<b>Total</b>	<b>3,917,203</b>	<b>3,462,606</b>	<b>115,611</b>	<b>21,403</b>	<b>20,582</b>	<b>19,147</b>	<b>10,437</b>	<b>50,059</b>	<b>138,264</b>	<b>79,094</b>

Source: CSO

TABLE 1.13

**Table 1.14 Irish speakers aged 3 years and over in each province, county and city, classified by frequency of speaking Irish, 2002**

Province, county or city	Total persons	Frequency of speaking Irish				
		Daily	Weekly	Less often	Never	Not stated
<b>Leinster</b>	<b>768,404</b>	<b>153,700</b>	<b>75,384</b>	<b>285,274</b>	<b>239,450</b>	<b>14,596</b>
Carlow	17,670	3,770	1,701	6,530	5,347	322
Dublin	394,240	73,131	37,307	149,400	127,086	7,316
<i>Dublin City</i>	<i>158,116</i>	<i>25,889</i>	<i>14,244</i>	<i>62,905</i>	<i>51,769</i>	<i>3,309</i>
<i>Dún Laoghaire-Rathdown</i>	<i>76,463</i>	<i>14,219</i>	<i>7,623</i>	<i>28,857</i>	<i>24,621</i>	<i>1,143</i>
<i>Fingal</i>	<i>75,240</i>	<i>15,052</i>	<i>7,228</i>	<i>27,177</i>	<i>24,515</i>	<i>1,268</i>
<i>South Dublin</i>	<i>84,421</i>	<i>17,971</i>	<i>8,212</i>	<i>30,461</i>	<i>26,181</i>	<i>1,596</i>
Kildare	66,800	14,077	6,633	24,451	20,474	1,165
Kilkenny	33,166	7,191	3,410	12,150	9,789	626
Laois	24,255	5,007	2,423	9,177	7,138	510
Longford	12,383	2,739	1,277	4,531	3,541	295
Louth	34,485	7,276	3,548	12,363	10,604	694
Meath	50,989	11,741	5,149	18,187	14,935	977
Offaly	24,087	5,162	2,393	8,990	7,068	474
Westmeath	28,846	5,604	2,882	10,991	8,806	563
Wexford	41,064	8,851	4,414	14,460	12,472	867
Wicklow	40,419	9,151	4,247	14,044	12,190	787
<b>Munster</b>	<b>493,500</b>	<b>105,032</b>	<b>46,519</b>	<b>186,443</b>	<b>145,618</b>	<b>9,888</b>
Clare	48,644	10,436	4,661	18,531	14,053	963
Cork	200,657	41,884	18,884	75,353	60,564	3,972
<i>Cork City</i>	<i>52,072</i>	<i>9,300</i>	<i>4,562</i>	<i>20,429</i>	<i>16,629</i>	<i>1,152</i>
<i>Cork County</i>	<i>148,585</i>	<i>32,584</i>	<i>14,322</i>	<i>54,924</i>	<i>43,935</i>	<i>2,820</i>
Kerry	60,885	14,732	6,138	23,915	14,712	1,388
Limerick	79,498	15,648	7,136	30,310	24,979	1,425
<i>Limerick City</i>	<i>21,417</i>	<i>4,159</i>	<i>2,176</i>	<i>8,196</i>	<i>6,487</i>	<i>399</i>
<i>Limerick County</i>	<i>58,081</i>	<i>11,489</i>	<i>4,960</i>	<i>22,114</i>	<i>18,492</i>	<i>1,026</i>
North Tipperary	28,324	6,222	2,555	10,604	8,373	570
South Tipperary	32,757	7,013	3,109	11,901	10,021	713
Waterford	42,735	9,097	4,036	15,829	12,916	857
<i>Waterford City</i>	<i>17,234</i>	<i>3,230</i>	<i>1,502</i>	<i>6,312</i>	<i>5,863</i>	<i>327</i>
<i>Waterford County</i>	<i>25,501</i>	<i>5,867</i>	<i>2,534</i>	<i>9,517</i>	<i>7,053</i>	<i>530</i>
<b>Connacht</b>	<b>216,128</b>	<b>53,236</b>	<b>22,670</b>	<b>82,335</b>	<b>53,147</b>	<b>4,740</b>
Galway	102,529	29,743	10,546	38,393	21,577	2,270
<i>Galway City</i>	<i>31,440</i>	<i>5,983</i>	<i>3,364</i>	<i>13,815</i>	<i>7,721</i>	<i>557</i>
<i>Galway County</i>	<i>71,089</i>	<i>23,760</i>	<i>7,182</i>	<i>24,578</i>	<i>13,856</i>	<i>1,713</i>
Leitrim	11,095	2,240	1,129	4,254	3,206	266
Mayo	53,707	11,910	6,034	20,913	13,699	1,151
Roscommon	23,633	4,679	2,390	9,200	6,846	518
Sligo	25,164	4,664	2,571	9,575	7,819	535
<b>Ulster (part of)</b>	<b>92,862</b>	<b>27,573</b>	<b>10,466</b>	<b>31,248</b>	<b>21,442</b>	<b>2,133</b>
Cavan	20,528	4,577	2,044	7,151	6,274	482
Donegal	51,783	17,925	6,121	17,004	9,561	1,172
Monaghan	20,551	5,071	2,301	7,093	5,607	479
<b>Total</b>	<b>1,570,894</b>	<b>339,541</b>	<b>155,039</b>	<b>585,300</b>	<b>459,657</b>	<b>31,357</b>

Source: CSO

**Table 1.15 Family units with two or more children in private households, classified by type of family unit, age group of youngest child and age group of eldest child, 2002**

Family composition	Age Group of eldest child					
	Total	0-4 years	5-9 years	10-14 years	15-19 years	20 years and over
<b>Husband and wife</b>						
Age group of youngest child						
0-4 years	106,178	26,241	46,987	22,454	8,302	2,194
5-9 years	75,592	–	12,165	35,076	20,691	7,660
10-14 years	74,320	–	–	11,528	37,724	25,068
15 and over	62,020	–	–	–	12,832	49,188
20 and over	42,982	–	–	–	–	42,982
<b>Total</b>	<b>361,092</b>	<b>26,241</b>	<b>59,152</b>	<b>69,058</b>	<b>79,549</b>	<b>127,092</b>
<b>Cohabiting couple</b>						
Age group of youngest child						
0-4 years	8,516	2,468	3,549	1,688	682	129
5-9 years	2,710	0	595	1,237	658	220
10-14 years	1,551	0	0	371	819	361
15 and over	855	0	0	0	270	585
20 and over	345	0	0	0	0	345
<b>Total</b>	<b>13,977</b>	<b>2,468</b>	<b>4,144</b>	<b>3,296</b>	<b>2,429</b>	<b>1,640</b>
<b>Lone mother</b>						
Age group of youngest child						
0-4 years	15,203	2,821	6,259	3,891	1,699	533
5-9 years	11,539	0	2,009	5,145	3,170	1,215
10-14 years	11,313	0	0	2,003	5,643	3,667
15 and over	9,794	0	0	0	2,334	7,460
20 and over	15,154	0	0	0	0	15,154
<b>Total</b>	<b>63,003</b>	<b>2,821</b>	<b>8,268</b>	<b>11,039</b>	<b>12,846</b>	<b>28,029</b>
<b>Lone father</b>						
Age group of youngest child						
0-4 years	804	174	300	178	74	78
5-9 years	1,228	0	182	525	345	176
10-14 years	2,063	0	0	305	1,044	714
15 and over	2,526	0	0	0	591	1,935
20 and over	3,782	0	0	0	0	3,782
<b>Total</b>	<b>10,403</b>	<b>174</b>	<b>482</b>	<b>1,008</b>	<b>2,054</b>	<b>6,685</b>

Source: CSO

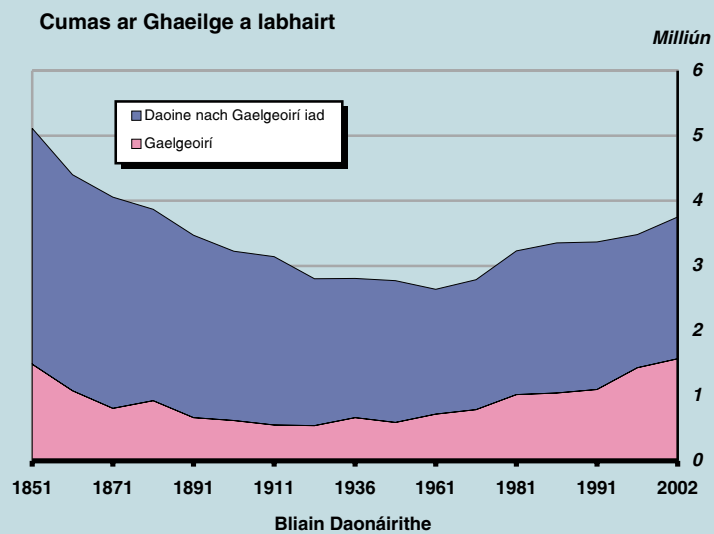


TABLE 1.15

